

## Rabbit Anti-NKG2D antibody

SL0938R

|                                     |                                                                                                                                                                                                                                                                                                                                                                                                                                                                                                                                                        |
|-------------------------------------|--------------------------------------------------------------------------------------------------------------------------------------------------------------------------------------------------------------------------------------------------------------------------------------------------------------------------------------------------------------------------------------------------------------------------------------------------------------------------------------------------------------------------------------------------------|
| <b>Product Name</b>                 | NKG2D                                                                                                                                                                                                                                                                                                                                                                                                                                                                                                                                                  |
| <b>Chinese Name</b>                 | NK 细胞受体 2D (CD314) 抗体                                                                                                                                                                                                                                                                                                                                                                                                                                                                                                                                  |
| <b>Alias</b>                        | NKG2-D type II integral membrane protein; KLRK1; natural killer cell group 2D; NKG2-D isoform b; Klrk1; Nkrp2; NKG2-D-activating NK receptor; NK cell receptor D; Killer cell lectin-like receptor subfamily K; NK lectin-like receptor; CD314; CD 314; CD314 antigen; D12S2489E; Killer cell lectin like receptor subfamily K member 1; Killer cell lectin-like receptor subfamily K member 1; KLR; Klrk1; NKG2 D activating NK receptor; NKG2 D type II integral membrane protein; NKG2-D-activating NK receptor; NKG2D_HUMAN; NKLLR; NKR P2; Nkrp2. |
| <b>Research Area</b>                | Cell biology immunology                                                                                                                                                                                                                                                                                                                                                                                                                                                                                                                                |
| <b>Immunogen Species</b>            | Rabbit                                                                                                                                                                                                                                                                                                                                                                                                                                                                                                                                                 |
| <b>Clonality</b>                    | Polyclonal                                                                                                                                                                                                                                                                                                                                                                                                                                                                                                                                             |
| <b>React Species</b>                | Human, Mouse, (predicted: Rat, )                                                                                                                                                                                                                                                                                                                                                                                                                                                                                                                       |
| <b>Applications</b>                 | WB=1:500-2000,Flow-Cyt=2 $\mu$ g/Test (Paraffin sections need antigen repair not yet tested in other applications.<br>optimal dilutions/concentrations should be determined by the end user.                                                                                                                                                                                                                                                                                                                                                           |
| <b>Theoretical molecular weight</b> | 25kDa                                                                                                                                                                                                                                                                                                                                                                                                                                                                                                                                                  |
| <b>Detection molecular weight</b>   | 31-35 kDa                                                                                                                                                                                                                                                                                                                                                                                                                                                                                                                                              |
| <b>Cellular localization</b>        | The cell membrane                                                                                                                                                                                                                                                                                                                                                                                                                                                                                                                                      |
| <b>Form</b>                         | Liquid                                                                                                                                                                                                                                                                                                                                                                                                                                                                                                                                                 |
| <b>Concentration</b>                | 1mg/ml                                                                                                                                                                                                                                                                                                                                                                                                                                                                                                                                                 |
| <b>immunogen</b>                    | KLH conjugated synthetic peptide derived from rat NKG2D: 121-219/219 <Extracellular>                                                                                                                                                                                                                                                                                                                                                                                                                                                                   |
| <b>Lsotype</b>                      | IgG                                                                                                                                                                                                                                                                                                                                                                                                                                                                                                                                                    |
| <b>Purification</b>                 | affinity purified by Protein A                                                                                                                                                                                                                                                                                                                                                                                                                                                                                                                         |
| <b>Buffer Solution</b>              | 1M TBS(pH7.4) with 1% BSA, 3% Proclin300 and 50% Glycerol.                                                                                                                                                                                                                                                                                                                                                                                                                                                                                             |

---

|                       |                                                                                                                                                                                                                                                                                                                                                                                                                                                                                                                                                                                                                                                                                                                                                                                                                                                  |
|-----------------------|--------------------------------------------------------------------------------------------------------------------------------------------------------------------------------------------------------------------------------------------------------------------------------------------------------------------------------------------------------------------------------------------------------------------------------------------------------------------------------------------------------------------------------------------------------------------------------------------------------------------------------------------------------------------------------------------------------------------------------------------------------------------------------------------------------------------------------------------------|
| <b>Storage</b>        | Shipped at 4°C. Store at -20 °C for one year. Avoid repeated freeze/thaw cycles.                                                                                                                                                                                                                                                                                                                                                                                                                                                                                                                                                                                                                                                                                                                                                                 |
| <b>Attention</b>      | This product as supplied is intended for research use only, not for use in human, therapeutic or diagnostic applications.                                                                                                                                                                                                                                                                                                                                                                                                                                                                                                                                                                                                                                                                                                                        |
| <b>PubMed</b>         | <a href="#">PubMed</a><br>This locus represents naturally occurring read-through transcription between the neighboring KLRC4 (killer cell lectin-like receptor subfamily C, member 4) and KLRK1 (killer cell lectin-like receptor subfamily K, member 1) genes on chromosome 12. The read-through transcript includes an alternate 5' exon and lacks a significant portion of the KLRC4 coding sequence, including the start codon, and it thus encodes the KLRK1 protein. [provided by RefSeq, Dec 2010]<br><br><b>Function:</b><br>Receptor for MICA, MICB, ULBP1, ULBP2, ULBP3 (ULBP2>ULBP1>ULBP3) and ULBP4. Plays a role as a receptor for the recognition of MHC class I HLA-E molecules by NK cells and some cytotoxic T-cells. Involved in the immune surveillance exerted by T- and B-lymphocytes.<br><br><b>Subunit:</b><br>Homodimer. |
| <b>Product Detail</b> | <b>Subcellular Location:</b><br>Membrane; Single-pass type II membrane protein.<br><br><b>Tissue Specificity:</b><br>Natural killer cells. Expressed on essentially all CD56+CD3- NK cells from freshly isolated PBMC. Also detected in gamma-delta cells and CD8+ alpha-beta T-cells. Expressed in interferon-producing killer dendritic cells (IKDCs).<br><br><b>Similarity:</b><br>Contains 1 C-type lectin domain.<br><br><b>SWISS:</b><br>O70215<br><br><b>Gene ID:</b><br>24934<br><br><b>Database links:</b>                                                                                                                                                                                                                                                                                                                              |

[Entrez Gene: 100528032](#) Human

[Entrez Gene: 22914](#) Human

[Entrez Gene: 27007](#) Mouse

[Entrez Gene: 24934](#) Rat

[Omim: 611817](#) Human

[SwissProt: P26718](#) Human

[SwissProt: O54709](#) Mouse

[SwissProt: O70215](#) Rat

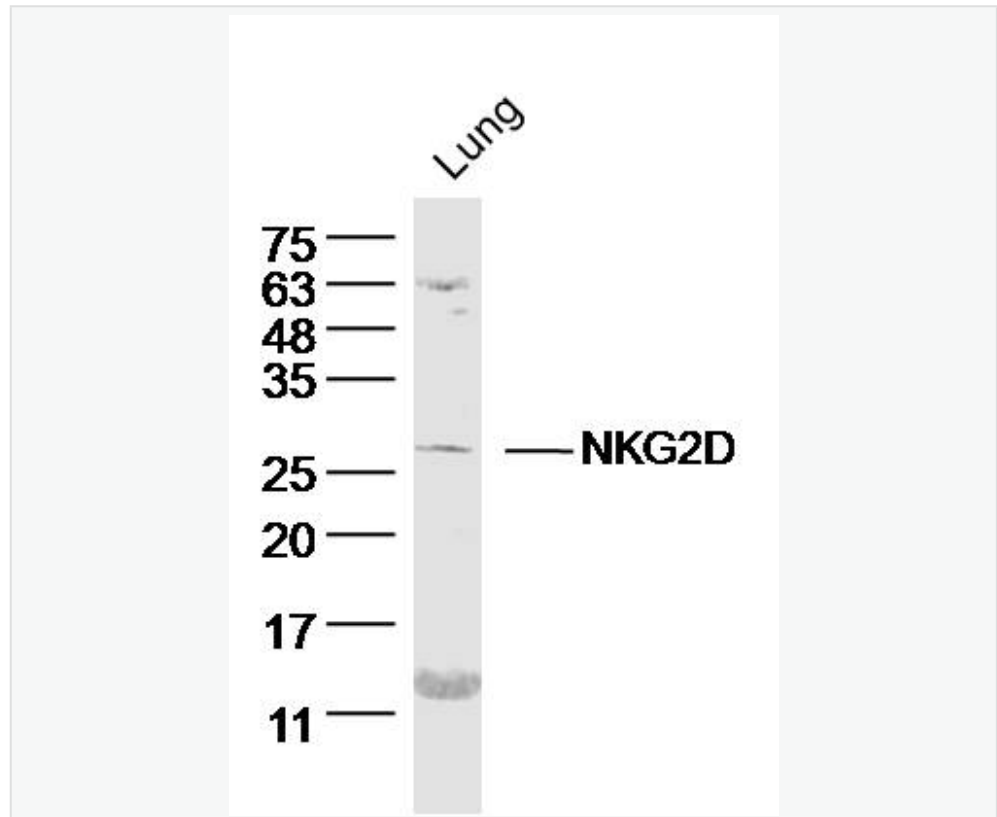
[Unigene: 387787](#) Human

[Unigene: 8217](#) Mouse

[Unigene: 14544](#) Rat

NKG2-D 出现在免疫细胞上表达的受体，NKG2D 属 C 型凝集素家族 Transmembrane protein，广泛表达在 NK 细胞、CD8+的  $\alpha\beta$ T 细胞和  $\gamma\delta$ T 细胞表面，可以提高 NK 细胞对 Tumour 细胞的杀伤活性。

**Product Picture**



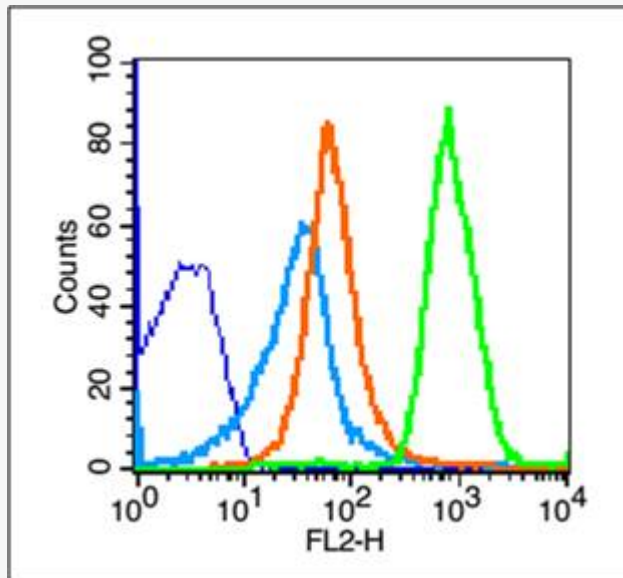
Sample: Lung (Mouse) Lysate at 40 ug

Primary: Anti- NKG2D (SL0938R) at 1/300 dilution

Secondary: IRDye800CW Goat Anti-Rabbit IgG at 1/20000 dilution

Predicted band size: 25 kD

Observed band size: 26 kD



Blank control (blue line): Mouse thymus cells (blue).

Primary Antibody (green line): Rabbit Anti-NKG2D antibody (SL0938R)

Dilution: 1 $\mu$ g /10<sup>6</sup> cells;

Isotype Control Antibody (orange line): Rabbit IgG .

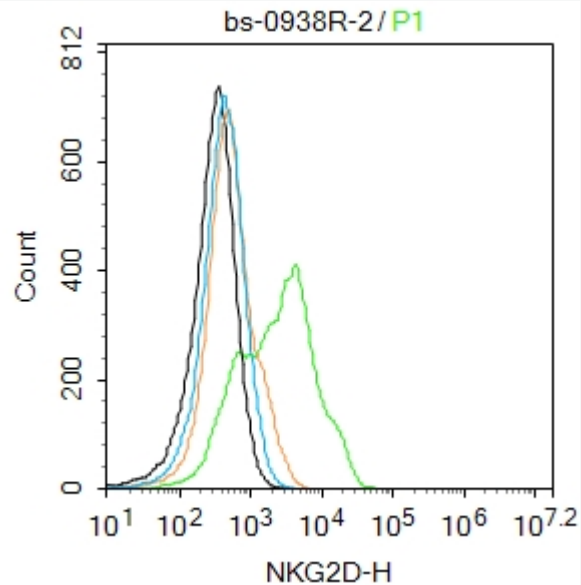
Secondary Antibody (white blue line): Goat anti-rabbit IgG-PE

Dilution: 1 $\mu$ g /test.

#### Protocol

The cells were fixed with 70% methanol (Overnight at 4°C) . Cells stained with Primary Antibody for 30 min at room temperature. The cells were then incubated in 1 X PBS/2%BSA/10% goat serum to block non-specific protein-protein interactions followed by the antibody for 15 min at room temperature. The secondary antibody used for 40 min at room

temperature. Acquisition of 20,000 events was performed.



Blank control:SW480.

Primary Antibody (green line): Rabbit Anti-NKG2D antibody (SL0938R)

Dilution: 2ug/Test;

Secondary Antibody : Goat anti-rabbit IgG-FITC

Dilution: 0.5ug/Test.

Protocol

The cells were incubated in 5%BSA to block non-specific protein-protein interactions for 30 min at room temperature .Cells stained with Primary Antibody for 30 min at room temperature. The secondary antibody used for 40 min at room temperature. Acquisition of 20,000 events was



SunLong Biotech Co.,LTD  
Tel: 0086-571-56623320 Fax:0086-571-56623318  
E-mail:sales@sunlongbiotech.com  
www.sunlongbiotech.com

---

performed.