

Rabbit Anti-NPY2R antibody

SL0937R

| | |
|-------------------------------------|---|
| Product Name | NPY2R |
| Chinese Name | 神经肽 Y 受体 2 抗体 |
| Alias | Neuropeptide Y Receptor Type 2; Neuropeptide Y receptor Y2; NPY-Y2 receptor; NPY2R_HUMAN. |
| Research Area | Neurobiology |
| Immunogen Species | Rabbit |
| Clonality | Polyclonal |
| React Species | Human, Mouse, Rat, (predicted: Pig,) WB=1:500-2000,IHC-P=1:100-500,IHC-F=1:100-500,IF=1:100-500 (Paraffin sections need antigen repair) |
| Applications | not yet tested in other applications. optimal dilutions/concentrations should be determined by the end user. |
| Theoretical molecular weight | 43kDa |
| Cellular localization | The cell membrane |
| Form | Liquid |
| Concentration | 1mg/ml |
| immunogen | KLH conjugated synthetic peptide derived from human NPY2R: 301-381/381 |
| Lsotype | IgG |
| Purification | affinity purified by Protein A |
| Buffer Solution | 1M TBS(pH7.4) with 1% BSA, 3% Proclin300 and 50% Glycerol. |
| Storage | Shipped at 4°C. Store at -20 °C for one year. Avoid repeated freeze/thaw cycles. |
| Attention | This product as supplied is intended for research use only, not for use in human, therapeutic or diagnostic applications. |
| PubMed | PubMed |
| Product | Neuropeptide Y (NPY), a peptide widely expressed in the brain, acts through the |

Detail

protein G-coupled receptors Y1, Y2 and Y5. This peptide modulates many important functions such as the control of energy balance and anxiety. Its involvement in brain development has been less investigated.

Neuropeptide Y (NPY) receptors are members of a G protein coupled receptor superfamily and they mediate a variety of physiological responses including feeding and vasoconstriction. The endogenous ligands of NPY receptors are a family of structurally related peptides, including NPY, peptide YY (PYY), and pancreatic polypeptide (PP). Increased activity of NPY and its receptors, Y1R, Y2R, and Y5R has been found in the brain in many forms of experimental obesity. Furthermore, several association studies have supported the association between NPY2R and obesity.

Function:

Receptor for neuropeptide Y and peptide YY. The rank order of affinity of this receptor for pancreatic polypeptides is PYY > NPY > PYY (3-36) > NPY (2-36) > [Ile-31, Gln-34] PP > [Leu-31, Pro-34] NPY > PP, [Pro-34] PYY and NPY free acid.

Subcellular Location:

Cell membrane.

Tissue Specificity:

High levels in amygdala, corpus callosum, hippocampus and subthalamic nucleus. Also detectable in caudate nucleus, hypothalamus and substantia nigra.

Similarity:

Belongs to the G-protein coupled receptor 1 family.

SWISS:

P49146

Gene ID:

4887

Database links:

[Entrez Gene: 4887](#) Human

[Entrez Gene: 18167](#) Mouse

[Entrez Gene: 66024](#) Rat

[Omim: 162642](#) Human

[SwissProt: P49146](#) Human

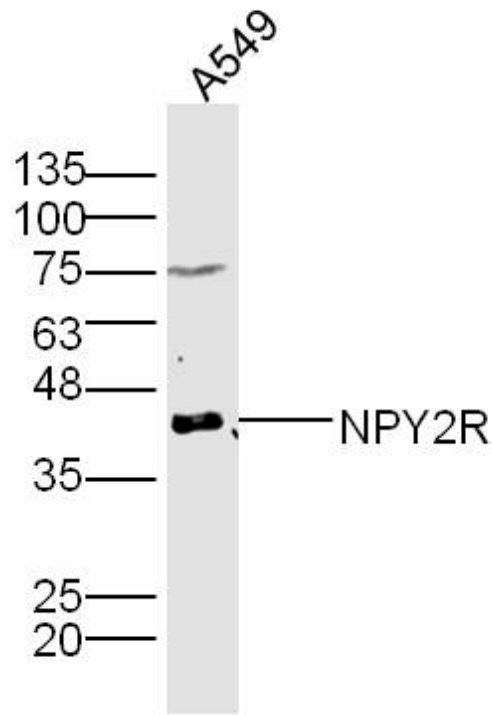
[SwissProt: P97295](#) Mouse

[Unigene: 37125](#) Human

[Unigene: 1433](#) Mouse

[Unigene: 64505](#) Rat

**Product
Picture**



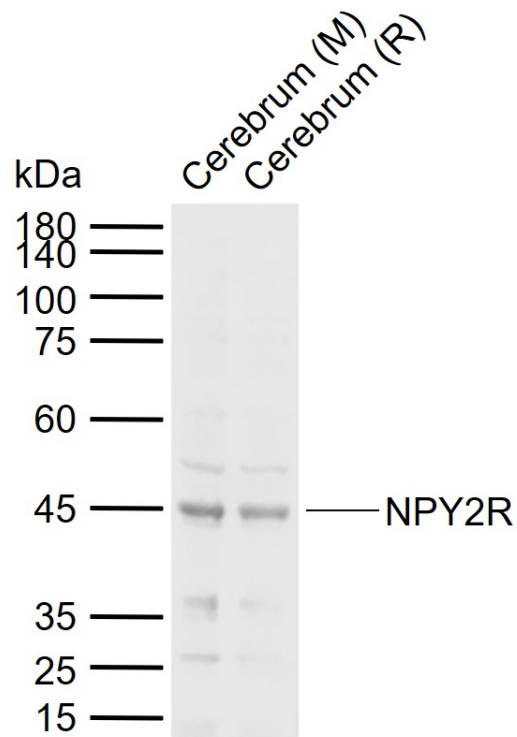
Sample: A549 Cell Lysate at 30 ug

Primary: Anti- NPY2R (SL0937R) at 1/300 dilution

Secondary: IRDye800CW Goat Anti-Rabbit IgG at 1/20000 dilution

Predicted band size: 43 kD

Observed band size: 43 kD



Sample:

Lane 1: Mouse Cerebrum tissue lysates

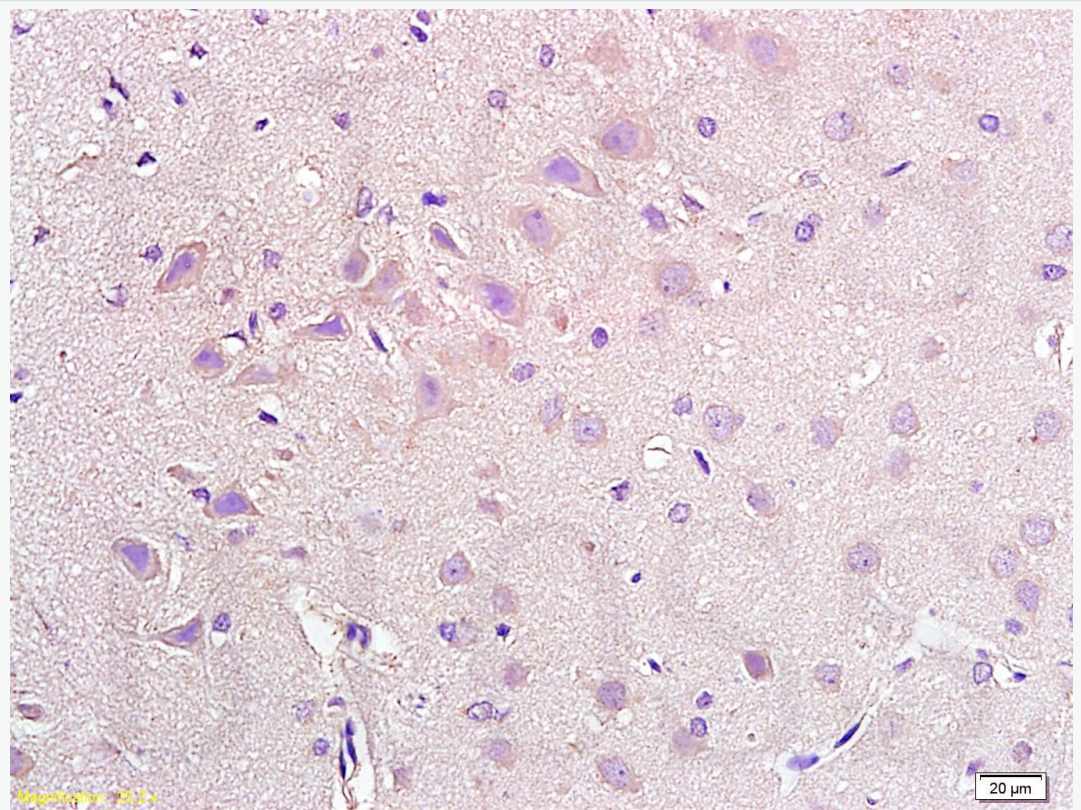
Lane 2: Rat Cerebrum tissue lysates

Primary: Anti-NPY2R (SL0937R) at 1/1000 dilution

Secondary: IRDye800CW Goat Anti-Rabbit IgG at 1/20000 dilution

Predicted band size: 43 kDa

Observed band size: 45 kDa



Tissue/cell: rat brain tissue; 4% Paraformaldehyde-fixed and paraffin-embedded;
Antigen retrieval: citrate buffer (1M, pH 6.0), Boiling bathing for 15min; Block
endogenous peroxidase by 3% Hydrogen peroxide for 30min; Blocking buffer
(normal goat serum,C-0005) at 37°C for 20 min;
Incubation: Anti-NPY2R Polyclonal Antibody, Unconjugated(SL0937R) 1:200,
overnight at 4°C, followed by conjugation to the secondary antibody(SP-0023)
and DAB(C-0010) staining