

## Rabbit Anti-WDR26 antibody

SL0932R

**Product Name** WDR26

**Chinese Name** 心肌缺血预处理正调节蛋白 2 抗体

**Alias** myocardial ischemic preconditioning upregulated protein 2; WDR26; PRO0852; CDW2; MIP2; DDB1 associated WDR protein 2; Myocardial ischemic preconditioning up regulated protein 2; ischemic preconditioning upregulated protein 2; WD repeat domain 26; WD repeat-containing protein 26; FLJ21016; WDR26\_HUMAN.

**Research Area** Cardiovascular Cell biology Signal transduction Cyclin transcriptional regulatory factor

**Immunogen Species** Rabbit

**Clonality** Polyclonal

**React Species** Human, Mouse, Rat, (predicted: Chicken, Dog, Cow, Horse, )  
WB=1:500-2000,IHC-P=1:100-500,IHC-F=1:100-500,ICC/IF=1:100-500,IF=1:100-500,Flow-Cytometry  
(Paraffin sections need antigen repair)

**Applications** not yet tested in other applications.  
optimal dilutions/concentrations should be determined by the end user.

**Theoretical molecular weight** 72kDa

**Cellular localization** cytoplasmic

**Form** Liquid

**Concentration** 1mg/ml

**immunogen** KLH conjugated synthetic peptide derived from human WDR26: 101-200/514

**Lsotype** IgG

**Purification** affinity purified by Protein A

**Buffer Solution** 1M TBS(pH7.4) with 1% BSA, 3% Proclin300 and 50% Glycerol.

**Storage** Shipped at 4°C. Store at -20 °C for one year. Avoid repeated freeze/thaw cycles.

**Attention** This product as supplied is intended for research use only, not for use in human, therapeutic or diagnostic applications.

**PubMed**

[PubMed](#)

This gene encodes a member of the WD repeat protein family. WD repeats are minimally conserved approximately 40 amino acids typically bracketed by gly-his and trp-aspartate (GH-WD), which may facilitate the formation of heterotrimeric or multiprotein complexes. Members of this family are involved in a variety of cellular processes, including cell cycle progression, signal transduction, apoptosis, and gene regulation. Two transcript variants encoding two different isoforms have been found for this gene. [provided by RefSeq]

**Function:**

May be involved in MAPK pathways.

**Subunit:**

Interacts with DDB1-CUL4A/B E3 ligase complexes.

**Subcellular Location:**

Cytoplasm.

**Tissue Specificity:**

Broadly expressed, with highest levels in heart and skeletal muscle.

**Similarity:**

Contains 1 CTLH domain.

Contains 1 LisH domain.

Contains 6 WD repeats.

**Product  
Detail**

**SWISS:**

Q9H7D7

**Gene ID:**

80232

**Database links:**

[Entrez Gene: 80232](#) Human

[Entrez Gene: 226757](#) Mouse

[Entrez Gene: 498301](#) Rat

[SwissProt: Q9H7D7](#) Human

[SwissProt: Q8C6G8](#) Mouse

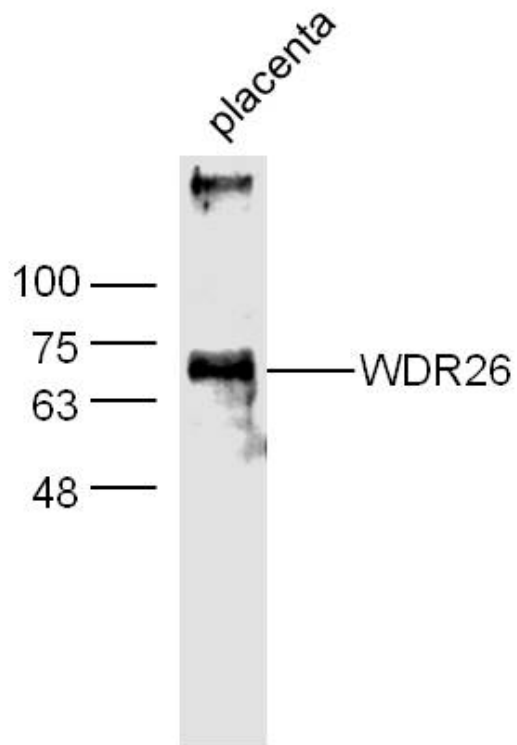
[Unigene: 497873](#) Human

[Unigene: 289082](#) Mouse

[Unigene: 23078](#) Rat

WDR26 可能具有通过 MAPK 信号途径调节细胞增殖的功能。

**Product  
Picture**



Sample:

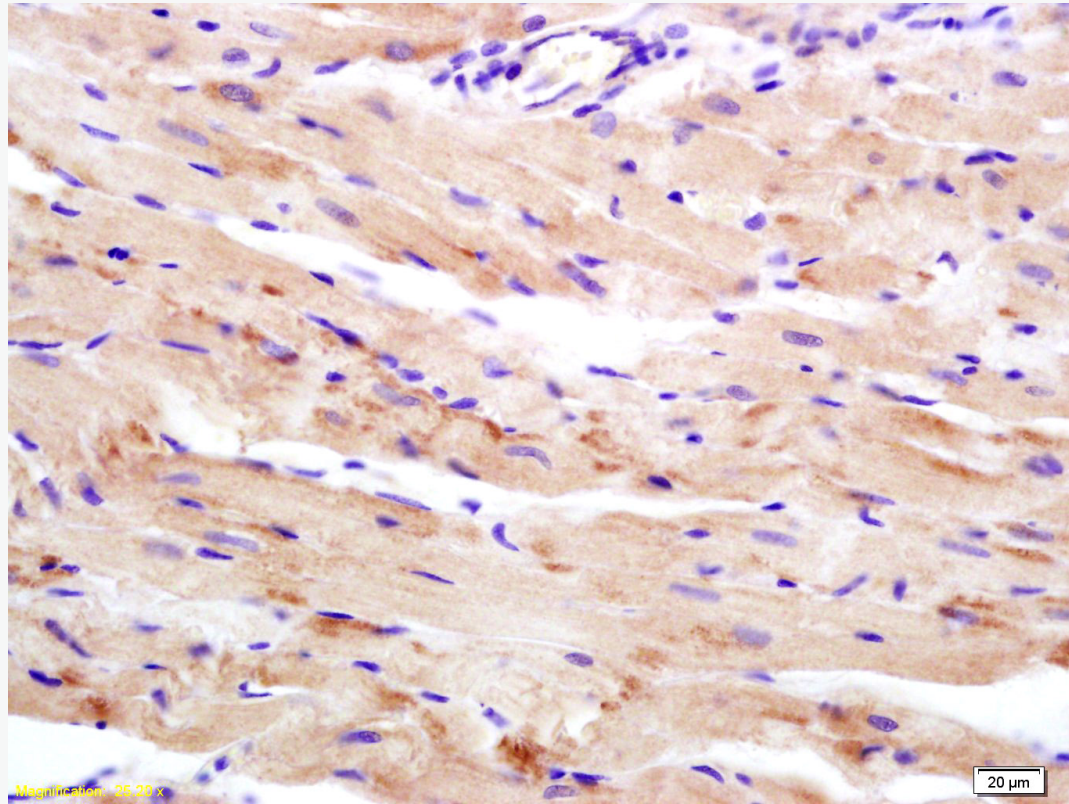
Placenta (Mouse) Lysate at 40 ug

Primary: Anti-WDR26 (SL0932R) at 1/300 dilution

Secondary: IRDye800CW Goat Anti-Rabbit IgG at 1/20000 dilution

Predicted band size: 72 kD

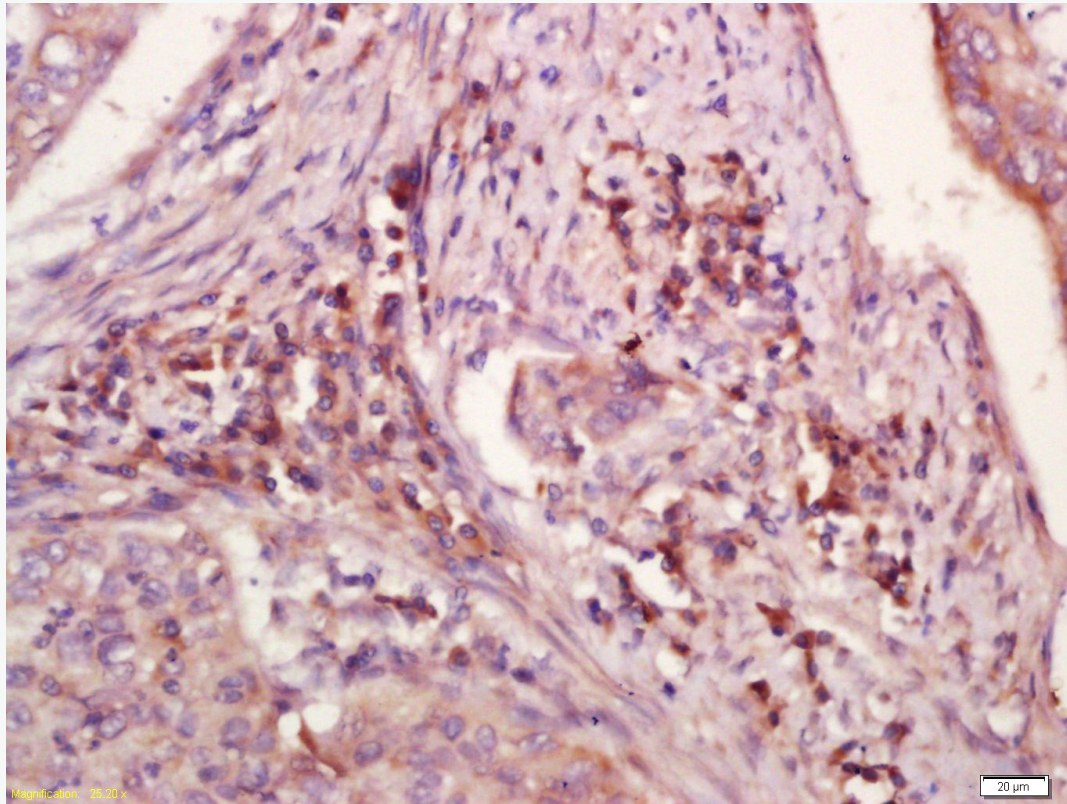
Observed band size: 70 kD



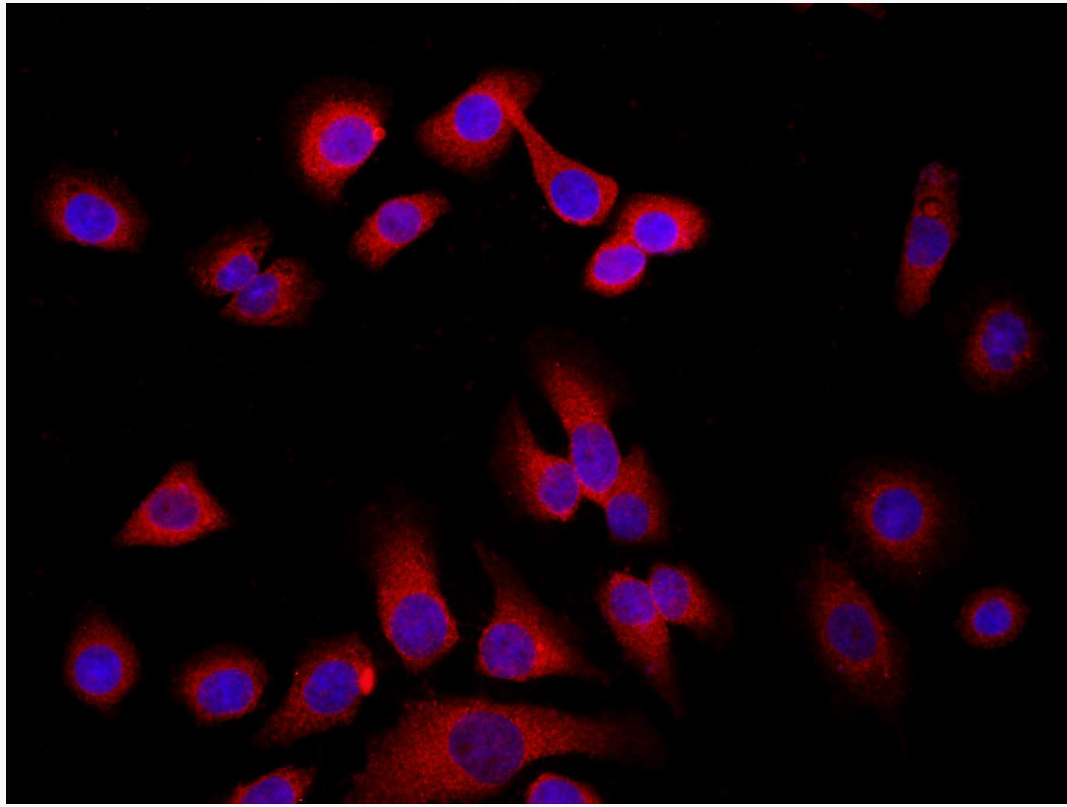
Tissue/cell: rat heart tissue; 4% Paraformaldehyde-fixed and paraffin-embedded;

Antigen retrieval: citrate buffer ( 1M, pH 6.0 ), Boiling bathing for 15min; Block endogenous by 3% Hydrogen peroxide for 30min; Blocking buffer (normal goat serum,C-0005) at 37°C for 1h

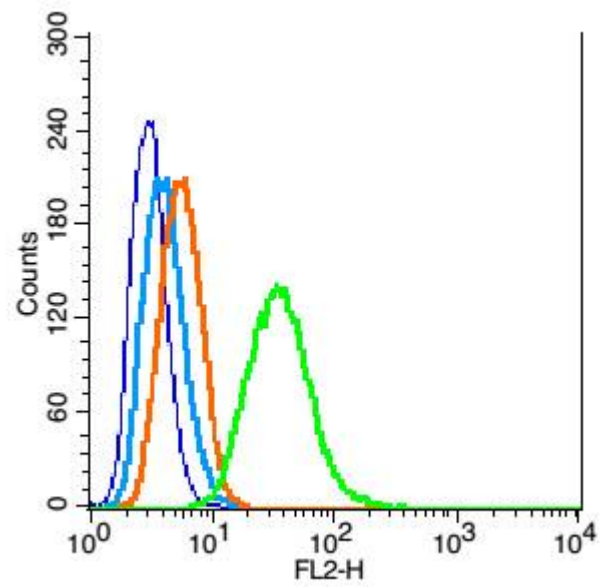
Incubation: Anti-WDR26 Polyclonal Antibody, Unconjugated(SL0932R) 1:200, overnight at 4°C followed by conjugation to the secondary antibody(SP-0023) and DAB(C-0010) staining



Tissue/cell: human laryngocarcinoma; 4% Paraformaldehyde-fixed and paraffin-embedded;  
Antigen retrieval: citrate buffer ( 1M, pH 6.0 ), Boiling bathing for 15min; Block endogenous  
by 3% Hydrogen peroxide for 30min; Blocking buffer (normal goat serum,C-0005) at 37°C fo  
Incubation: Anti-WDR26 Polyclonal Antibody, Unconjugated(SL0932R) 1:200, overnight at  
followed by conjugation to the secondary antibody(SP-0023) and DAB(C-0010) staining

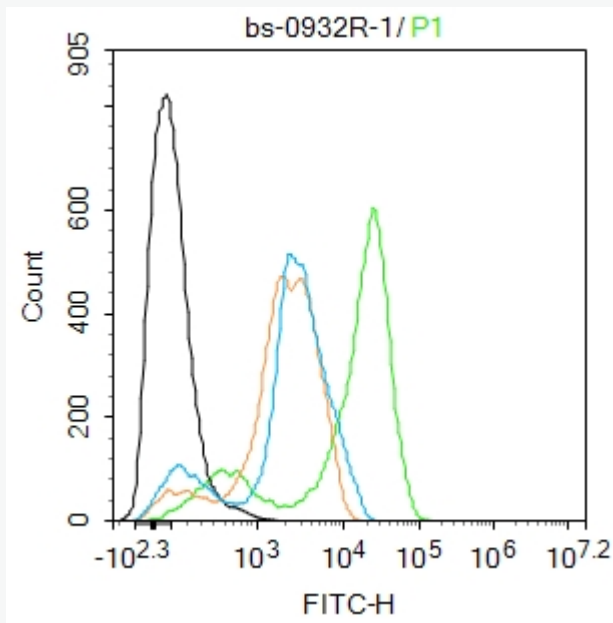


Tissue/cell: MCF7; 4% Paraformaldehyde-fixed; Triton X-100 at room temperature for 20 min; 1% BSA in PBS buffer (normal goat serum, C-0005) at 37°C for 20 min; Antibody incubation with (WDR26) 1:1000 for 24 hours; Antibody, Unconjugated (SL0932R) 1:200, 90 minutes at 37°C; followed by a conjugated Goat Anti-Rabbit IgG antibody (SL0295G-FITC) at 37°C for 90 minutes, DAPI (blue, C02-04002) 1:1000 for 10 min to stain the cell nuclei.



Blank control: RSC96(blue), the cells were fixed with 2% paraformaldehyde (10 min) and the permeabilized with ice-cold 90% methanol for 30 min on ice.

Isotype Control Antibody: Rabbit IgG(orange) ; Secondary Antibody: Goat anti-rabbit IgG-PE (blue), Dilution: 1:200 in 1 X PBS containing 0.5% BSA ; Primary Antibody Dilution: 1 $\mu$ g in 1 X PBS containing 0.5% BSA(green).



Blank control:THP-1.

Primary Antibody (green line): Rabbit Anti-WDR26 antibody (SL0932R)

Dilution: 1ug/Test;

Secondary Antibody : Goat anti-rabbit IgG-FITC

Dilution: 0.5ug/Test.

#### Protocol

The cells were fixed with 4% PFA (10min at room temperature)and then permeabilized with 90% methanol for 20 min at -20°C.The cells were then incubated in 5%BSA to block non-specific protein-protein interactions for 30 min at room temperature .Cells stained with Primary Antibody for 30 min at room temperature. The secondary antibody used for 40 min at room temperature. Acquisition of 20,000 events was performed.