

## Rabbit Anti-SLC34A2 antibody

SL0856R

<b>Product Name</b>	SLC34A2
<b>Chinese Name</b>	磷酸钠协同 Transporter 抗体
<b>Alias</b>	NaPi-2b; Sodium-dependent phosphate transport protein 2B; Sodium/phosphate cotransporter 2B; Na(+)/Pi cotransporter 2B; Sodium-phosphate transport protein 2B; Na(+)-dependent phosphate cotransporter 2B; Solute carrier family 34 member 2; NPT2B_HUMAN; NaPi3b; SLC34A2; Sodium-dependent phosphate transport protein 2B.
<b>Research Area</b>	Cell biology Channel protein
<b>Immunogen Species</b>	Rabbit
<b>Clonality</b>	Polyclonal
<b>React Species</b>	Rat, (predicted: Mouse, ) WB=1:500-2000,ICC/IF=1:100-500,ELISA=1:5000-10000 (Paraffin sections need antigen repair)
<b>Applications</b>	not yet tested in other applications. optimal dilutions/concentrations should be determined by the end user.
<b>Theoretical molecular weight</b>	77kDa
<b>Cellular localization</b>	The cell membrane
<b>Form</b>	Liquid
<b>Concentration</b>	1mg/ml
<b>immunogen</b>	KLH conjugated synthetic peptide derived from mouse SLC34A2: 1-50/697 <Cytoplasmic>
<b>Lsotype</b>	IgG
<b>Purification</b>	affinity purified by Protein A
<b>Buffer Solution</b>	1M TBS(pH7.4) with 1% BSA, 3% Proclin300 and 50% Glycerol.
<b>Storage</b>	Shipped at 4°C. Store at -20 °C for one year. Avoid repeated freeze/thaw cycles.
<b>Attention</b>	This product as supplied is intended for research use only, not for use in human, therapeutic or diagnostic applications.

## PubMed

### [PubMed](#)

Na<sup>+</sup>/Pi-cotransporter This is a family of mainly mammalian type II renal Na<sup>+</sup>/Pi-cotransporters with other related sequences from lower eukaryotes and bacteria some of which are also Na<sup>+</sup>/Pi-cotransporters. In the kidney the type II renal Na<sup>+</sup>/Pi-cotransporters protein allows reabsorption of filtered Pi in the proximal tubule.

#### **Function:**

May be involved in actively transporting phosphate into cells via Na<sup>(+)</sup> cotransport. It may be the main phosphate transport protein in the intestinal brush border membrane. May have a role in the synthesis of surfactant in lungs' alveoli.

#### **Subcellular Location:**

Membrane; Multi-pass membrane protein.

#### **Tissue Specificity:**

Highly abundant in the ileum of small intestine, whereas it is almost absent in the duodenum and in the jejunum.

#### **Similarity:**

Belongs to the SLC34A transporter family.

## Product Detail

#### **SWISS:**

Q9DBP0

#### **Gene ID:**

20531

#### **Database links:**

[Entrez Gene: 10568](#) Human

[Entrez Gene: 20531](#) Mouse

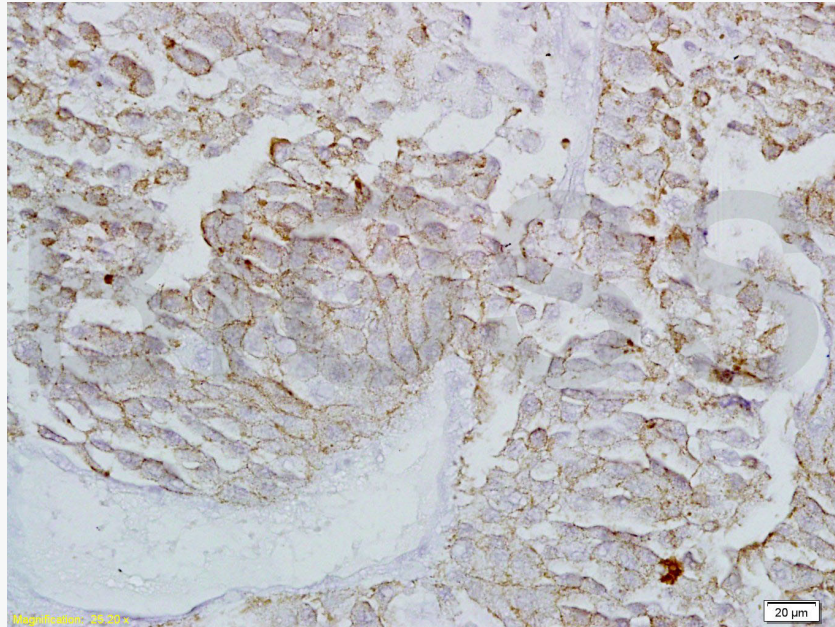
[Omim: 604217](#) Human

[SwissProt: O95436](#) Human

[Unigene: 479372](#) Human

SLC34A2/NaPi-2b 是磷酸钠协同 Transporter 的基因，表达在动物多种组织中，以肺组织表达最高。该基因主要参与无机磷代谢，与肺泡微石症、睾丸微石症等多种代谢性疾病发病相关。

## Product Picture



### **bs-0856R Anti-SLC34A2 Polyclonal Antibody**

Tissue/cell: rat lung tissue; 4% Paraformaldehyde-fixed and paraffin-embedded

Antigen retrieval: citrate buffer ( 0.01M, pH 6.0 ), Boiling bathing for 15min

Block endogenous peroxidase by 3% Hydrogen peroxide for 30min

Blocking buffer (normal goat serum) at 37°C for 20 min

Incubation: Anti-SLC34A2 Polyclonal Antibody, Unconjugated(bs-0856R) 1:200, overnight at 4°C, followed by conjugation to the secondary antibody and DAB staining