

Rabbit Anti-MAGE-1 antibody

SL0817R

Product Name MAGE-1

Chinese Name 黑色素瘤相关抗原抗体

Alias MAGE-1 protein; Antigen MZ2 E; MAGE 1 antigen; MAGE1; MAGE1A; MAGEA1; Melanoma antigen 1; Melanoma antigen family A 1 (directs expression of antigen MZ2 E); Melanoma antigen family A 1; Melanoma antigen MAGE 1; Melanoma associated antigen 1; Melanoma associated antigen MZ2 E; MAGA1_HUMAN; MGC9326.

Research Area Tumour immunology

Immunogen Species Rabbit

Clonality Polyclonal

React Species Human, Rat,

Applications IHC-P=1:100-500,IHC-F=1:100-500,IF=1:100-500 (Paraffin sections need antigen repair)
not yet tested in other applications.
optimal dilutions/concentrations should be determined by the end user.

Theoretical molecular weight 34kDa

Cellular localization The nucleus cytoplasmic

Form Liquid

Concentration 1mg/ml

immunogen KLH conjugated synthetic peptide derived from human MAGE-1: 101-200/309

Lsotype IgG

Purification affinity purified by Protein A

Buffer Solution 1M TBS(pH7.4) with 1% BSA, 3% Proclin300 and 50% Glycerol.

Storage Shipped at 4°C. Store at -20 °C for one year. Avoid repeated freeze/thaw cycles.

Attention This product as supplied is intended for research use only, not for use in human,

therapeutic or diagnostic applications.

PubMed

[PubMed](#)

The MAGE 1 gene is a member of the melanoma antigen encoding gene family. These genes encode for HLA-restricted tumor associated rejection antigens recognized by cytotoxic T lymphocytes. Some of these target antigens may be potentially useful for cancer specific immunotherapy. The expression of MAGE genes has been reported not only in melanoma but also in various other malignant tumors such as hepatocellular carcinoma and germ cell tumors.

Function:

May be involved in transcriptional regulation through interaction with SNW1 and recruiting histone deactylase HDAC1. May inhibit notch intracellular domain (NICD) transactivation. May play a role in embryonal development and tumor transformation or aspects of tumor progression. Antigen recognized on a melanoma by autologous cytolytic T-lymphocytes.

Subunit:

Interacts with SNW1 and HDCA1.

Subcellular Location:

Cytoplasm. Nucleus.

**Product
Detail**

Tissue Specificity:

Expressed in many tumors of several types, such as melanoma, head and neck squamous cell carcinoma, lung carcinoma and breast carcinoma, but not in normal tissues except for testes. Never expressed in kidney tumors, leukemias and lymphomas.

Similarity:

Contains 1 MAGE domain.

SWISS:

P43355

Gene ID:

4100

Database links:

[Entrez Gene: 4100](#) Human

[Entrez Gene: 17137](#) Mouse

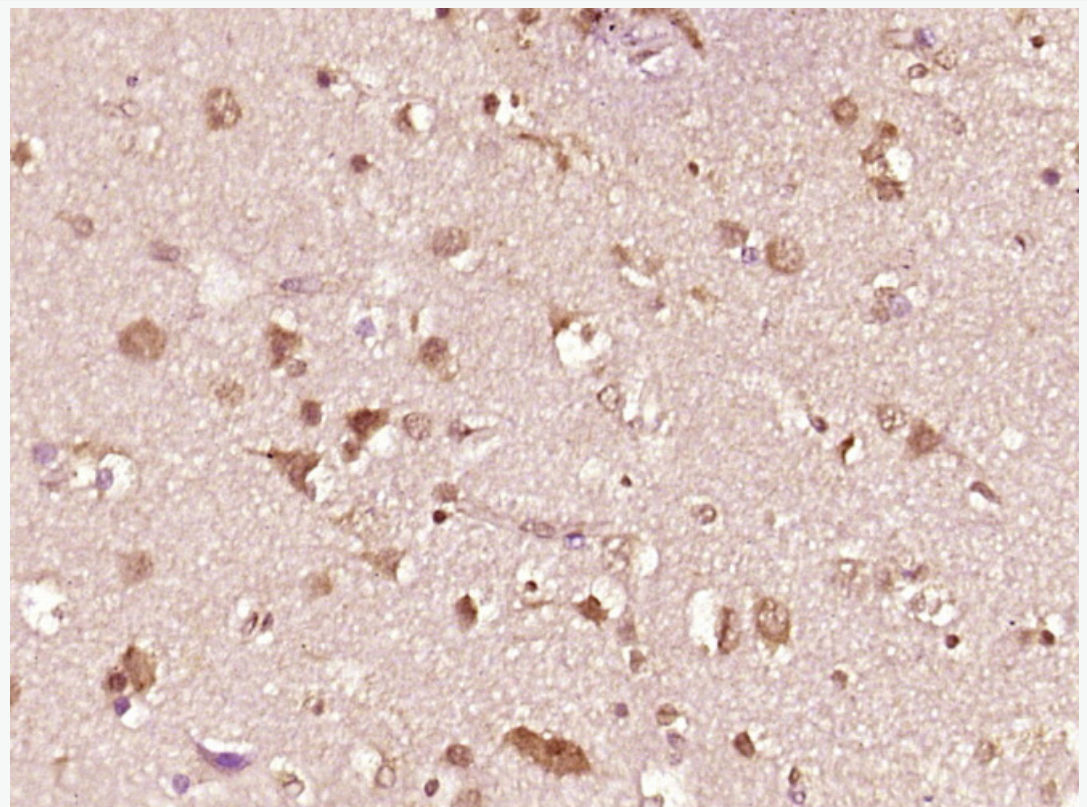
[Entrez Gene: 493750](#) Rat

[Omid: 300016](#) Human

[SwissProt: P43355](#) Human

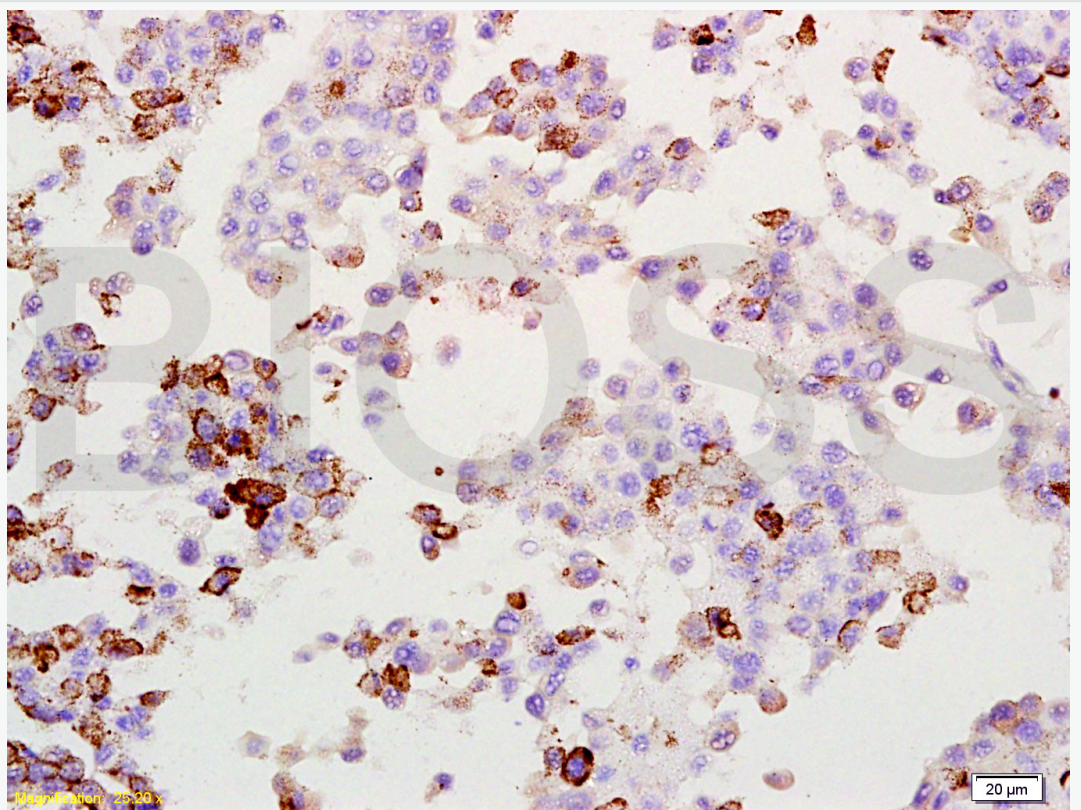
Mage-1 表达于正常的黑素细胞和大多数原发及转移的黑色素瘤中，故称：黑色素瘤相关抗原。MAGE-1 是重要的 Tumour 特异性抗原-MAGE 家族成员,近年被认为是一种辨别黑色素病变的有效抗原。主要用于恶性 Tumour 方面的研究。MAGE-1 基因属于黑色素瘤抗原编码基因家族，其编码产物表达于各种组织类型的 Tumour 中。包括黑色素瘤、神经胶质脑 Tumour、成神经细胞瘤、肾细胞癌等，但正常组织表达量较少或没有。

**Product
Picture**



Paraformaldehyde-fixed, paraffin embedded (Human glioma); Antigen retrieval by boiling in sodium citrate buffer (pH6.0) for 15min; Block endogenous peroxidase by 3% hydrogen peroxide for 20 minutes; Blocking buffer (normal goat serum) at 37°C for 30min; Antibody incubation with (MAGE-1) Polyclonal Antibody,

Unconjugated (SL0817R) at 1:400 overnight at 4°C, followed by operating according to SP Kit(Rabbit) (sp-0023) instructions and DAB staining.



Tissue/cell: rat lung tissue (Melanoma) ; 4% Paraformaldehyde-fixed and paraffin-embedded;

Antigen retrieval: citrate buffer (1M, pH 6.0), Boiling bathing for 15min; Block endogenous peroxidase by 3% Hydrogen peroxide for 30min; Blocking buffer (normal goat serum,C-0005) at 37°C for 20 min;

Incubation: Anti-MAGE-1 Polyclonal Antibody, Unconjugated(SL0817R) 1:200, overnight at 4°C, followed by conjugation to the secondary antibody(SP-0023) and



SunLong Biotech Co.,LTD
Tel: 0086-571-56623320 Fax:0086-571-56623318
E-mail:sales@sunlongbiotech.com
www.sunlongbiotech.com

DAB(C-0010) staining