

Rabbit Anti-RSL1D1 antibody

SL0793R

Product Name RSL1D1

Chinese Name 细胞衰老抑制基因抗体

Alias CATX 11; CATX-11; CATX11; Cellular senescence inhibited gene protein; L12; PBK1; CSIG; L12; PBK1; Protein PBK1; Ribosomal L1 domain-containing protein 1; RL1D1_HUMAN; Ribosomal L1 domain containing 1.

Research Area Tumour Chromatin and nuclear signals Signal transduction Cyclin transcriptional regulatory factor Cell differentiation Epigenetics

Immunogen Species Rabbit

Clonality Polyclonal

React Species Rat,Human (predicted:Mouse)

Applications WB=1:500-2000,IHC-P=1:400-800,IHC-F=1:400-800,IF=1:100-500 (Paraffin sections need antigen repair)
not yet tested in other applications.
optimal dilutions/concentrations should be determined by the end user.

Theoretical molecular weight 55kDa

Cellular localization The nucleus

Form Liquid

Concentration 1mg/ml

immunogen KLH conjugated synthetic peptide derived from human RSL1D1: 151-250/490

Lsotype IgG

Purification affinity purified by Protein A

Buffer Solution 1M TBS(pH7.4) with 1% BSA, 3% Proclin300 and 50% Glycerol.

Storage Shipped at 4°C. Store at -20 °C for one year. Avoid repeated freeze/thaw cycles.

Attention This product as supplied is intended for research use only, not for use in human, therapeutic or diagnostic applications.

PubMed [PubMed](#)

RSL1D1, also known as CATX-11, PBK1, L12 or CSIG, is a 490 amino acid nuclear protein that belongs to the ribosomal protein L1P family. Expressed in placenta, RSL1D1 contains many phosphorylated amino acid residues and is encoded by a gene that maps to human chromosome 16p13.13. Chromosome 16 encodes over 900 genes in approximately 90 million base pairs, makes up nearly 3% of human cellular DNA and is associated with a variety of genetic disorders. The GAN gene is located on chromosome 16 and, with mutation, may lead to giant axonal neuropathy, a nervous system disorder characterized by increasing malfunction with growth. The rare disorder Rubinstein-Taybi syndrome is also associated with chromosome 16, though through the CREBBP gene which encodes a critical CREB binding protein. Signs of Rubinstein-Taybi include mental retardation and predisposition to tumor growth and white blood cell neoplasias.

Subcellular Location:

Nucleus, nucleolus.

Tissue Specificity:

Placenta.

**Product
Detail**

Similarity:

Belongs to the ribosomal protein L1P family. Highly divergent.

SWISS:

O76021

Gene ID:

26156

Database links:

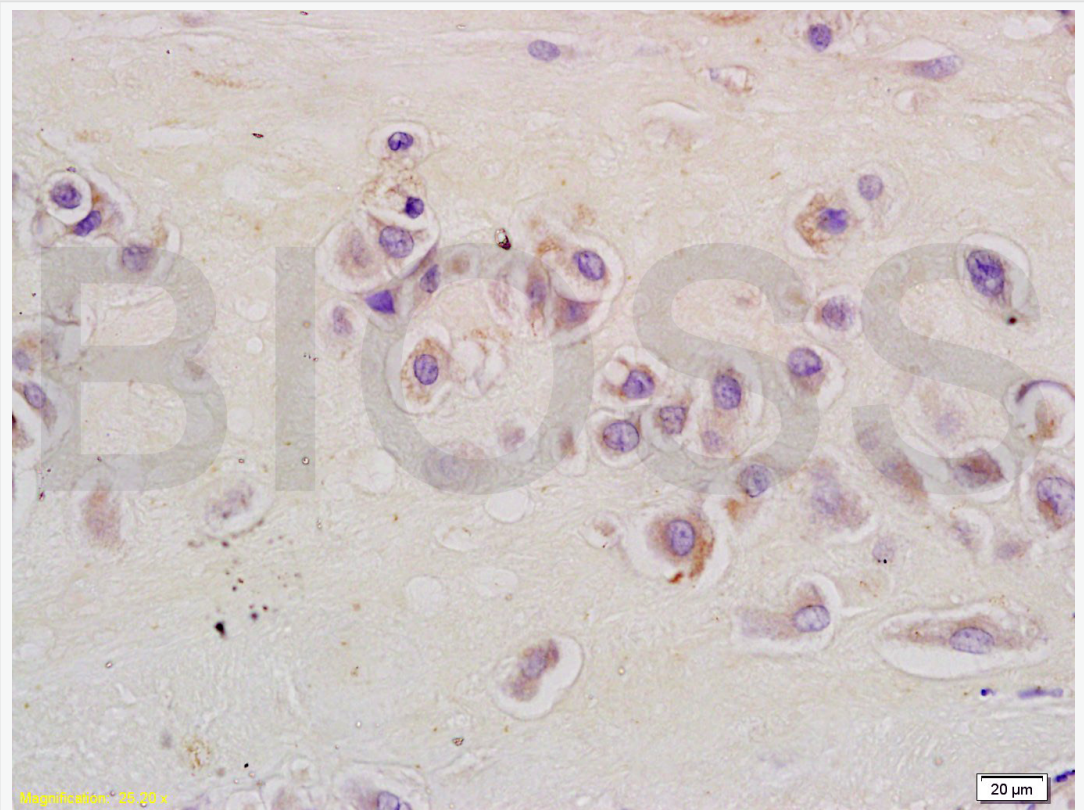
[Entrez Gene: 26156](#) Human

[SwissProt: O76021](#) Human

[Unigene: 401842](#) Human

CSIG 可抑制细胞衰老并延长细胞寿命 ,可能通过核糖体生物合成过程或基因转录调节来调控细胞衰老过程.

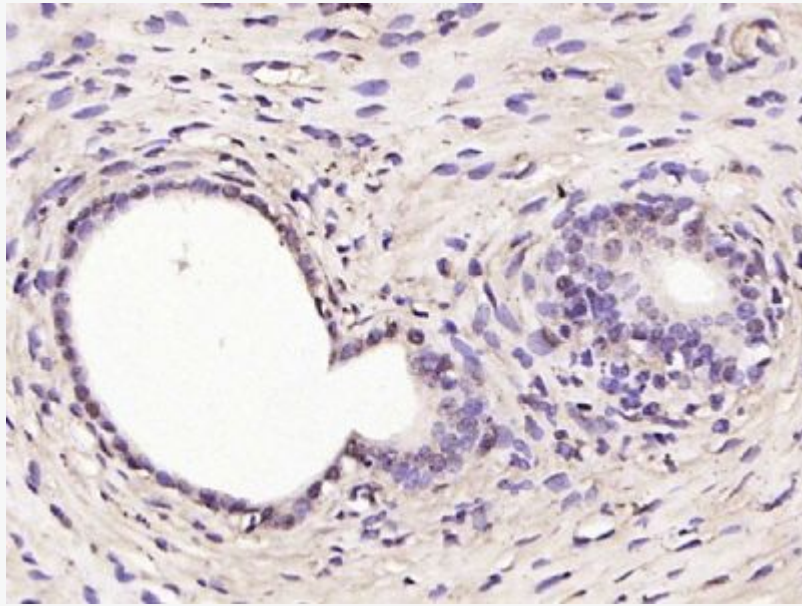
**Product
Picture**



Tissue/cell: human placenta tissue; 4% Paraformaldehyde-fixed and paraffin-embedded;

Antigen retrieval: citrate buffer (1M, pH 6.0), Boiling bathing for 15min; Block endogenous peroxidase by 3% Hydrogen peroxide for 30min; Blocking buffer (normal goat serum,C-0005) at 37°C for 20 min;

Incubation: Anti-CSIG Polyclonal Antibody, Unconjugated(SLR) 1:200, overnight at 4°C, followed by conjugation to the secondary antibody(SP-0023) and DAB(C-0010) staining



Paraformaldehyde-fixed, paraffin embedded (rat uterus); Antigen retrieval by boiling in sodium citrate buffer (pH6.0) for 15min; Block endogenous peroxidase by 3% hydrogen peroxide for 20 minutes; Blocking buffer (normal goat serum) at 37°C for 30min; Antibody incubation with (RSL1D1) Polyclonal Antibody, Unconjugated (SL0793R) at 1:200 overnight at 4°C, followed by operating according to SP Kit(Rabbit) (sp-0023) instructions and DAB staining.