

Rabbit Anti-CLDN1 antibody

SL0790R

Product Name	CLDN1
Chinese Name	紧密连接蛋白 1 抗体(C 端)
Alias	CLD1_HUMAN; Claudin-1; Claudin 1; Claudin1; CLD1; SEMP1; Senescence-associated epithelial membrane protein; UNQ481/PRO944; ILVASC;
Research Area	Tumour
Immunogen Species	Rabbit
Clonality	Polyclonal
React Species	Human,Mouse (predicted:Rat)
Applications	WB=1:500-2000 not yet tested in other applications. optimal dilutions/concentrations should be determined by the end user.
Theoretical molecular weight	23kDa
Cellular localization	The cell membrane
Form	Liquid
Concentration	1mg/ml
immunogen	KLH conjugated synthetic peptide derived from human CLDN1: 121-211/211 <Cytoplasmic>
Lsotype	IgG
Purification	affinity purified by Protein A
Buffer Solution	1M TBS(pH7.4) with 1% BSA, 3% Proclin300 and 50% Glycerol.
Storage	Shipped at 4°C. Store at -20 °C for one year. Avoid repeated freeze/thaw cycles.
Attention	This product as supplied is intended for research use only, not for use in human, therapeutic or diagnostic applications.
PubMed	PubMed
Product Detail	Tight junctions represent one mode of cell-to-cell adhesion in epithelial or endothelial cell sheets, forming continuous seals around cells and serving as a physical barrier to prevent solutes and water from passing freely through the paracellular space.

These junctions are comprised of sets of continuous networking strands in the outwardly facing cytoplasmic leaflet, with complementary grooves in the inwardly facing extracytoplasmic leaflet. The protein encoded by this gene, a member of the claudin family, is an integral membrane protein and a component of tight junction strands. Loss of function mutations result in neonatal ichthyosis-sclerosing cholangitis syndrome. [provided by RefSeq, Jul 2008]

Function:

Plays a major role in tight junction-specific obliteration of the intercellular space, through calcium-independent cell-adhesion activity.

Subunit:

Can form homo- and heteropolymers with other CLDN. Homopolymers interact with CLDN3, but not CLDN2, homopolymers. Directly interacts with TJP1/ZO-1, TJP2/ZO-2 and TJP3/ZO-3. Interacts with MPDZ and INADL.

Subcellular Location:

Cell junction, tight junction. Cell membrane; Multi-pass membrane protein.

Tissue Specificity:

Widely expressed, with highest levels in liver and kidney.

Similarity:

Belongs to the claudin family.

SWISS:

O95832

Gene ID:

9076

Database links:

[Entrez Gene: 9076](#) Human

[Entrez Gene: 12737](#) Mouse

[Entrez Gene: 65129](#) Rat

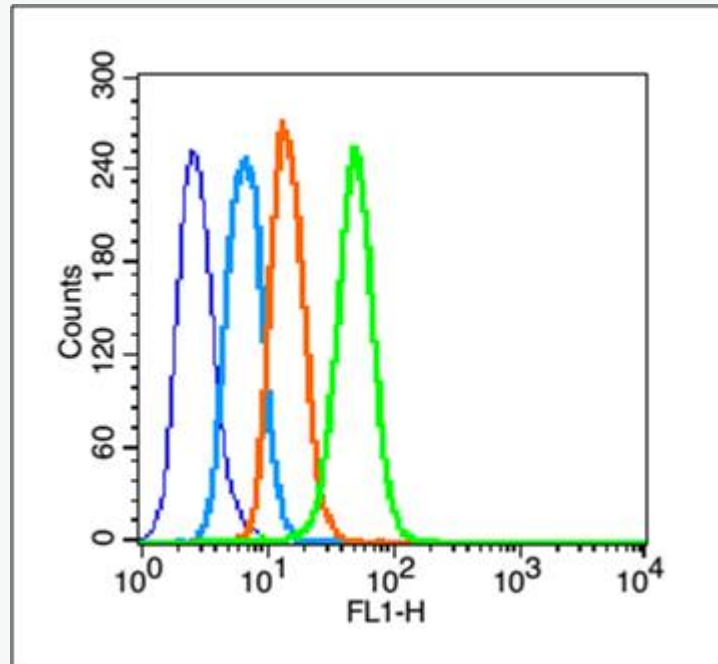
[SwissProt: O95832](#) Human

[SwissProt: O88551](#) Mouse

[SwissProt: P56745](#) Rat

Claudin 1 蛋白是紧密连接区相关的转膜蛋白 Claudin 的家族成员，在构

成紧密连接的完整膜蛋白中发挥着一定作用，目前多用于 Tumour 方面的研究。



Product Picture

Blank control (blue line): A431 (blue).

Primary Antibody (green line): Rabbit Anti- Claudin 1 antibody
(SL0790R)

Dilution: $1\mu\text{g}/10^6$ cells;

Isotype Control Antibody (orange line): Rabbit IgG .

Secondary Antibody (white blue line): Goat anti-rabbit IgG-FITC

Dilution: $1\mu\text{g}/\text{test}$.

Protocol

The cells were fixed with 2% paraformaldehyde for 10 min at room temperature. Cells stained with Primary Antibody for 30 min at room temperature. The cells were then incubated in 1 X PBS/2%BSA/10% goat



SunLong Biotech Co.,LTD

Tel: 0086-571-56623320 Fax:0086-571-56623318

E-mail:sales@sunlongbiotech.com

www.sunlongbiotech.com

serum to block non-specific protein-protein interactions followed by the antibody for 15 min at room temperature. The secondary antibody used for 40 min at room temperature. Acquisition of 20,000 events was performed.