

Rabbit Anti-IL-6 antibody

SL0782R

Product Name	IL-6
Chinese Name	白介素 6 抗体
Alias	Interleukin BSF 2; B cell differentiation factor; B cell stimulatory factor 2; BSF 2; BSF2; CDF; CTL differentiation factor; Cytotoxic T cell differentiation factor; Hepatocyte stimulating factor; HGF; HPGF; HSF; Hybridoma growth factor; Hybridoma plasmacytoma growth factor; IFNB2; IL 6; IL6 protein; Interferon beta 2; Interleukin 6 (interferon beta 2); Interleukin 6; Interleukin-6; Interleukin6; IL6_HUMAN.
Research Area	immunology
Immunogen Species	Rabbit
Clonality	Polyclonal
React Species	Human
Applications	WB=1:500-2000,ELISA=1:5000-10000 (Paraffin sections need antigen repair) not yet tested in other applications. optimal dilutions/concentrations should be determined by the end user.
Theoretical molecular weight	23kDa
Cellular localization	Secretory protein
Form	Liquid
Concentration	1mg/ml
immunogen	KLH conjugated synthetic peptide derived from mouse IL-6: 111-150/211
Lsotype	IgG
Purification	affinity purified by Protein A
Buffer Solution	1M TBS(pH7.4) with 1% BSA, 3% Proclin300 and 50% Glycerol.
Storage	Shipped at 4°C. Store at -20 °C for one year. Avoid repeated freeze/thaw cycles.
Attention	This product as supplied is intended for research use only, not for use in human, therapeutic or diagnostic applications.

PubMed

[PubMed](#)

This gene encodes a cytokine that functions in inflammation and the maturation of B cells. In addition, the encoded protein has been shown to be an endogenous pyrogen capable of inducing fever in people with autoimmune diseases or infections. The protein is primarily produced at sites of acute and chronic inflammation, where it is secreted into the serum and induces a transcriptional inflammatory response through interleukin 6 receptor, alpha. The functioning of this gene is implicated in a wide variety of inflammation-associated disease states, including susceptibility to diabetes mellitus and systemic juvenile rheumatoid arthritis. [provided by RefSeq, Jun 2011].

Function:

Cytokine with a wide variety of biological functions. It is a potent inducer of the acute phase response. Plays an essential role in the final differentiation of B-cells into Ig-secreting cells Involved in lymphocyte and monocyte differentiation. It induces myeloma and plasmacytoma growth and induces nerve cells differentiation Acts on B-cells, T-cells, hepatocytes, hematopoietic progenitor cells and cells of the CNS. Also acts as a myokine. It is discharged into the bloodstream after muscle contraction and acts to increase the breakdown of fats and to improve insulin resistance.

Subcellular Location:

Product Detail Secreted.

Post-translational modifications:

N- and O-glycosylated.

DISEASE:

Genetic variations in IL6 are associated with susceptibility to rheumatoid arthritis systemic juvenile (RASJ) [MIM:604302]. An inflammatory articular disorder with systemic-onset beginning before the age of 16. It represents a subgroup of juvenile arthritis associated with severe extraarticular features and occasionally fatal complications. During active phases of the disorder, patients display a typical daily spiking fever, an evanescent macular rash, lymphadenopathy, hepatosplenomegaly, serositis, myalgia and arthritis.

Note=A IL6 promoter polymorphism is associated with a lifetime risk of development of Kaposi sarcoma in HIV-infected men.

Similarity:

Belongs to the IL-6 superfamily.

SWISS:

P05231

Gene ID:
3569

Database links:

[Entrez Gene: 3569](#) Human

[Entrez Gene: 16193](#) Mouse

[Entrez Gene: 24498](#) Rat

[Omim: 147620](#) Human

[SwissProt: P05231](#) Human

[SwissProt: P08505](#) Mouse

[SwissProt: P20607](#) Rat

[Unigene: 654458](#) Human

[Unigene: 1019](#) Mouse

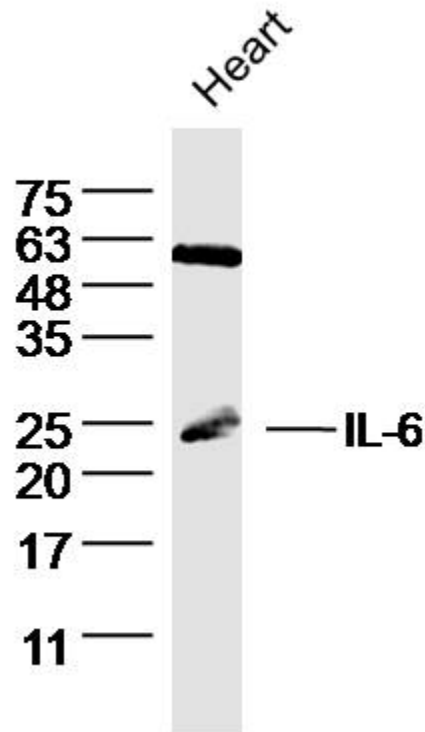
[Unigene: 9873](#) Rat

Growth factors and hormones (Growth Factor and Hormones)

白介素-6 是一种多功能 cell factor，既可由 lymphocyte 产生，也能由非 lymphocyte 合成。在体内免疫反应调节、血细胞的增生、防御机制和急性期反应中起重要作用。

IL6 是一种 glycoprotein，它既可诱导急性期时相关蛋白的产生，也是 β 细胞终末分化并分泌抗体的必需因子。

Product
Picture



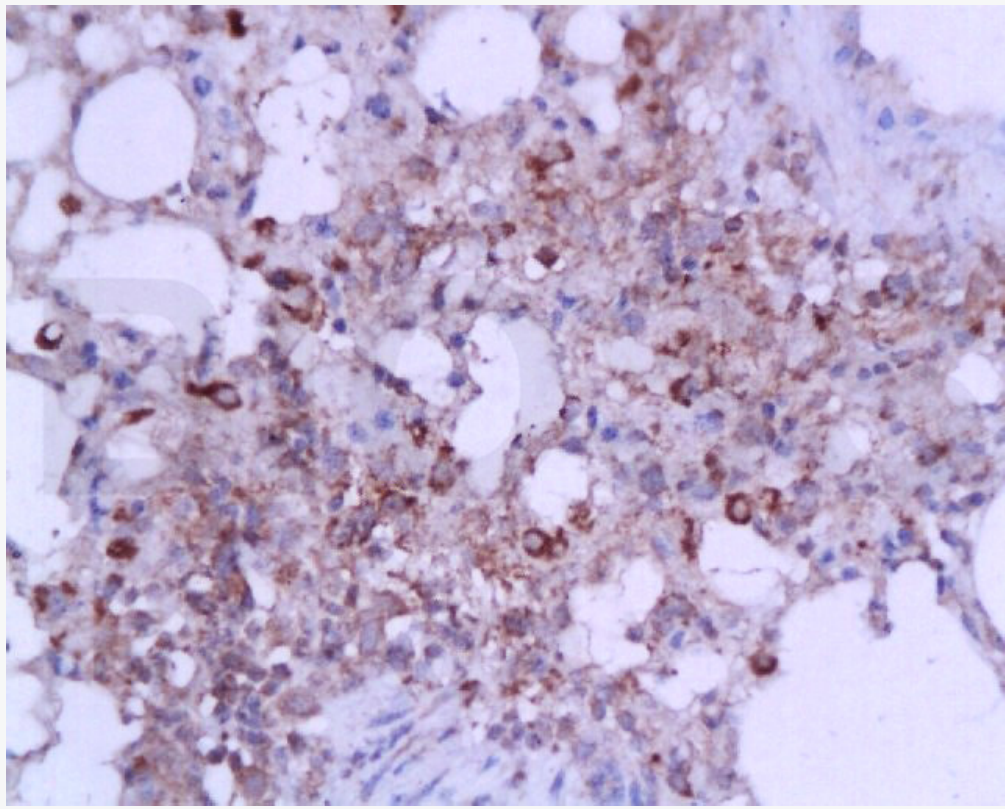
Sample: Heart (rat)l Lysate at 40 ug

Primary: Anti- IL-6 (SL0782R) at 1/300 dilution

Secondary: IRDye800CW Goat Anti-Rabbit IgG at 1/20000 dilution

Predicted band size: 23 kD

Observed band size: 23kD



Tissue/cell: mouse lung tissue; 4% Paraformaldehyde-fixed and paraffin-embedded;

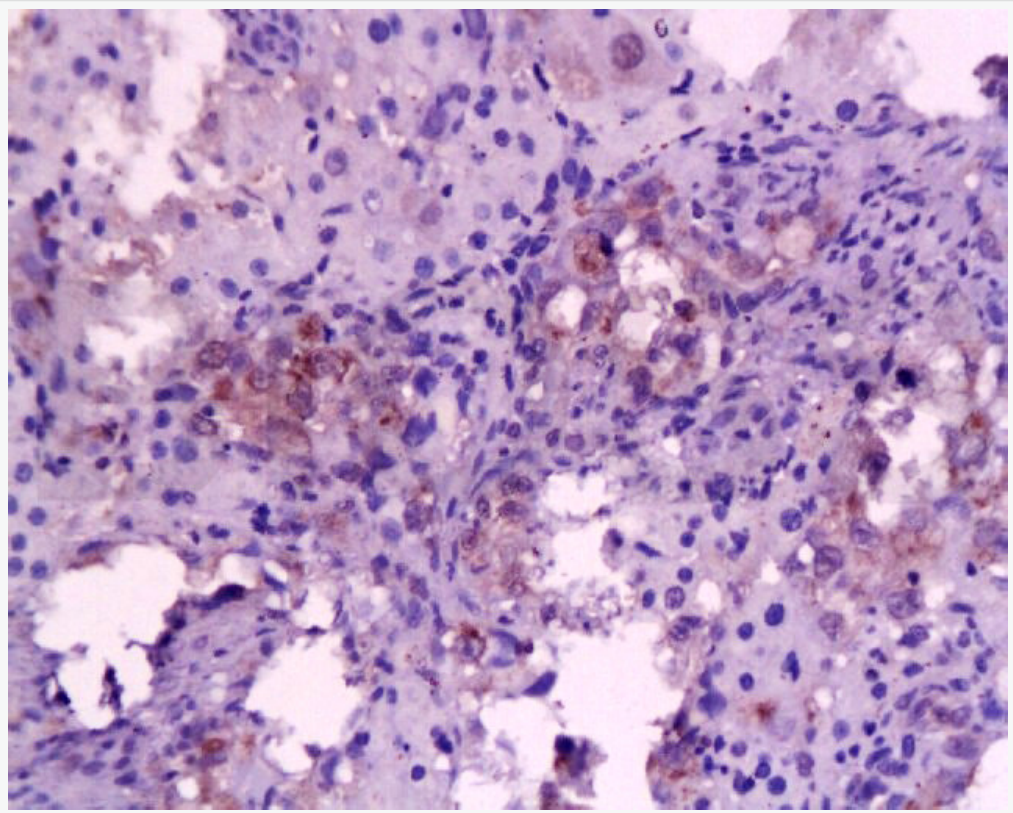
Antigen retrieval: citrate buffer (1M, pH 6.0), Boiling bathing for 15min;

Block endogenous peroxidase by 3% Hydrogen peroxide for 30min;

Blocking buffer (normal goat serum,C-0005) at 37°C for 20 min;

Incubation: Anti-IL-6(mo, rat) Polyclonal Antibody,

Unconjugated(SL0782R) 1:200, overnight at 4°C, followed by conjugation to the secondary antibody(SP-0023) and DAB(C-0010) staining



Tissue/cell: rat liver tissue; 4% Paraformaldehyde-fixed and paraffin-embedded;

Antigen retrieval: citrate buffer (1M, pH 6.0), Boiling bathing for 15min;

Block endogenous peroxidase by 3% Hydrogen peroxide for 30min;

Blocking buffer (normal goat serum,C-0005) at 37°C for 20 min;

Incubation: Anti-IL-6(mo, rat) Polyclonal Antibody,

Unconjugated(SL0782R) 1:200, overnight at 4°C, followed by conjugation to the secondary antibody(SP-0023) and DAB(C-0010) staining