

## Rabbit Anti-ECM1 antibody

SL0776R

**Product Name** ECM1

**Chinese Name** Extracellular matrix 蛋白 1 抗体

**Alias** Secretory Component Glycoprotein; ECM 1; Ecm1; ECM1\_HUMAN; Extracellular matrix protein 1; Secretory component p85.

**Research Area** Tumour Cell biology immunology The cell membrane 受体

**Immunogen Species** Rabbit

**Clonality** Polyclonal

**React Species** Human, Mouse, Rat, (predicted: Dog, Cow, )

**Applications** WB=1:500-2000,IHC-P=1:100-500,IHC-F=1:100-500,IF=1:100-500 (Paraffin sections need antigen repair)  
not yet tested in other applications.  
optimal dilutions/concentrations should be determined by the end user.

**Theoretical molecular weight** 59kDa

**Cellular localization** Secretory protein

**Form** Liquid

**Concentration** 1mg/ml

**immunogen** KLH conjugated synthetic peptide derived from human ECM1: 488-567/567

**Lsotype** IgG

**Purification** affinity purified by Protein A

**Buffer Solution** 1M TBS(pH7.4) with 1% BSA, 3% Proclin300 and 50% Glycerol.

**Storage** Shipped at 4°C. Store at -20 °C for one year. Avoid repeated freeze/thaw cycles.

**Attention** This product as supplied is intended for research use only, not for use in human, therapeutic or diagnostic applications.

**PubMed** [PubMed](#)

**Product** Extracellular matrix protein 1 (ECM1) This family consists of several eukaryotic

---

**Detail**

extracellular matrix protein 1 (ECM1) sequences. ECM1 has been shown to regulate endochondral bone formation, stimulate the proliferation of endothelial cells and induce angiogenesis. Mutations in the ECM1 gene can cause lipoid proteinosis, a disorder which causes generalised thickening of skin, mucosae and certain viscera. Classical features include beaded eyelid papules and laryngeal infiltration leading to hoarseness.

**Function:**

Involved in endochondral bone formation as negative regulator of bone mineralization. Stimulates the proliferation of endothelial cells and promotes angiogenesis. Inhibits MMP9 proteolytic activity.

**Subunit:**

Interacts (via C-terminus) with HSPG2 (via C-terminus). Interacts with EFEMP1/FBLN3 and LAMB3. Interacts with MMP9.

**Subcellular Location:**

Secreted, extracellular space, extracellular matrix.

**Tissue Specificity:**

Expressed in breast cancer tissues. Little or no expression observed in normal breast tissues. Expressed in skin; wide expression is observed throughout the dermis with minimal expression in the epidermis.

**DISEASE:**

Lipoid proteinosis (LiP) [MIM:247100]: Rare autosomal recessive disorder characterized by generalized thickening of skin, mucosae and certain viscera. Classical features include beaded eyelid papules and laryngeal infiltration leading to hoarseness. Histologically, there is widespread deposition of hyaline material and disruption/reduplication of basement membrane. Note=The disease is caused by mutations affecting the gene represented in this entry.

**SWISS:**

Q16610

**Gene ID:**

1893

**Database links:**

[Entrez Gene: 1893](#) Human

[Entrez Gene: 116662](#) Rat

[GenBank: NP\\_073155](#) Human

[Omim: 602201](#) Human

[SwissProt: Q16610](#) Human

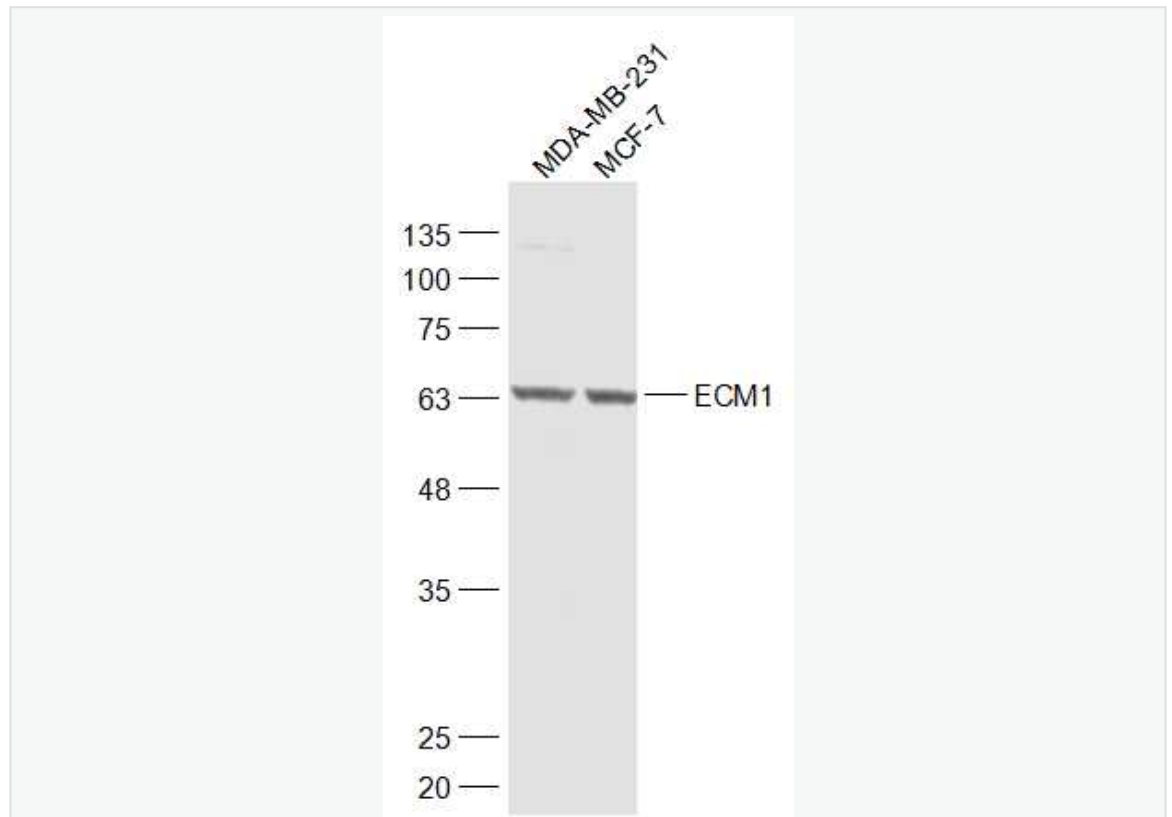
[SwissProt: Q62894](#) Rat

[Unigene: 81071](#) Human

[Unigene: 97792](#) Rat

ECM1 是一种分泌性 glycoprotein, ECM1 可促进 vascular endothelial cell 的增殖和血管的生成, 经研究发现, ECM1 的表达可能与 Tumour 及 Tumour 的转移有关联, 而目前在多种 Tumour 的研究中也已确认 Extracellular matrix 与 Tumour 的发生、发展及转移等有密切的关系, ECM1 是目前 Tumour 研究的热点。

**Product  
Picture**



Sample:

MDA-MB-231(Mouse) Cell Lysate at 30 ug

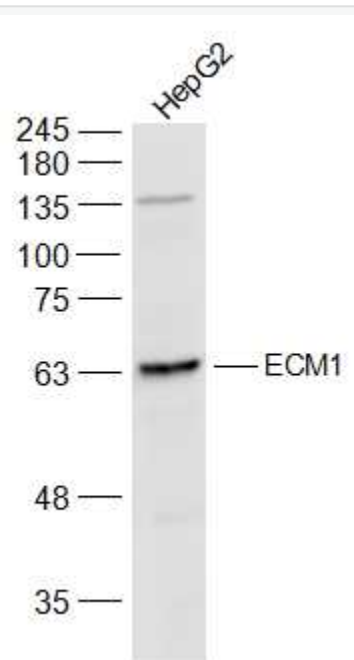
MCF-7(Human) Cell Lysate at 30 ug

Primary: Anti-ECM1 (SL0776R) at 1/1000 dilution

Secondary: IRDye800CW Goat Anti-Rabbit IgG at 1/20000 dilution

Predicted band size: 59 kD

Observed band size: 65 kD



Sample:

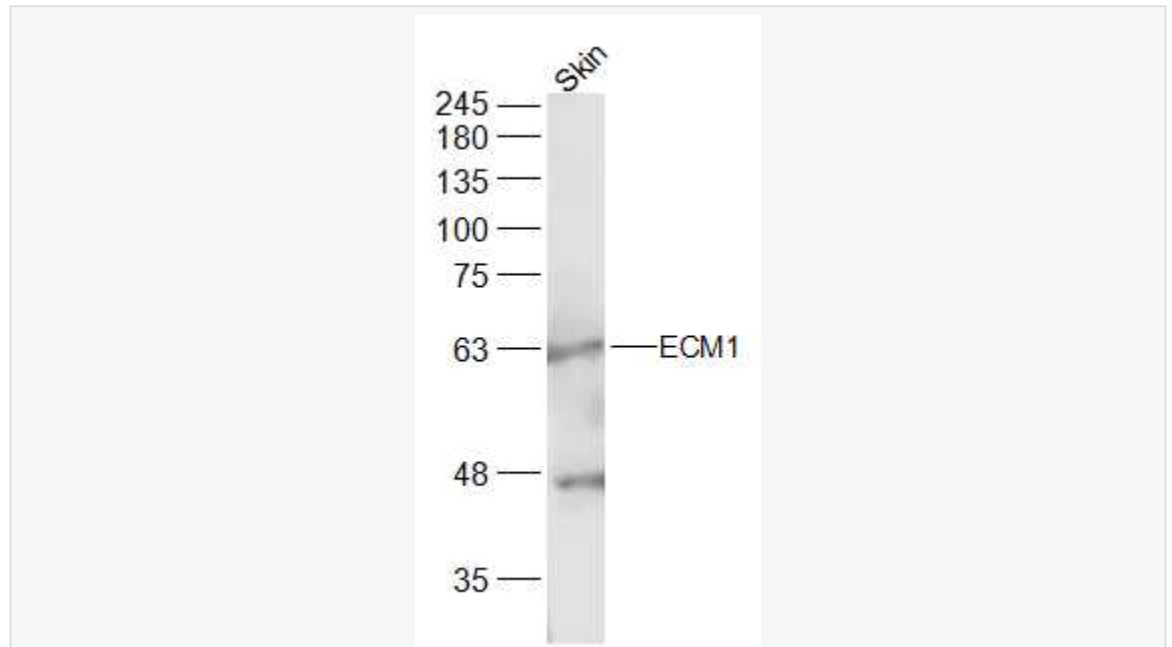
HepG2(Human) Cell Lysate at 30 ug

Primary: Anti-ECM1 (SL0776R) at 1/300 dilution

Secondary: IRDye800CW Goat Anti-Rabbit IgG at 1/20000 dilution

Predicted band size: 59 kD

Observed band size: 64 kD



Sample:

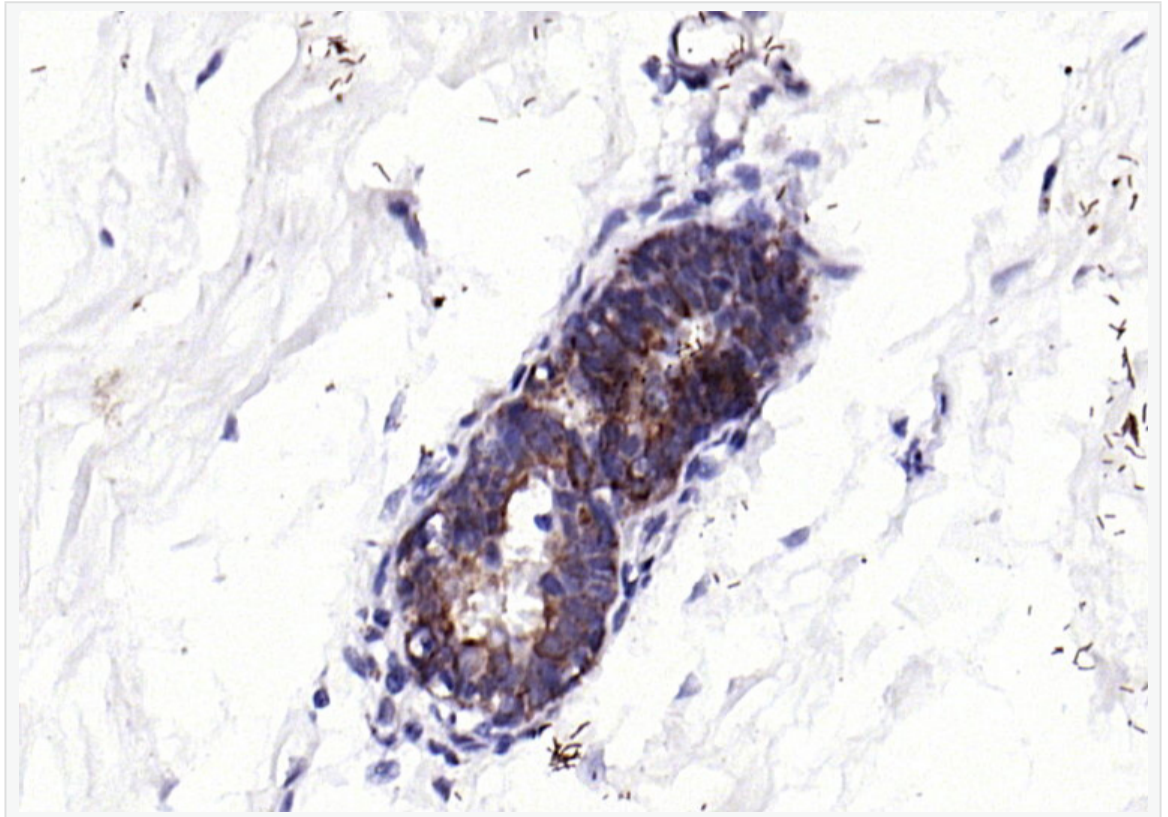
Skin(Mouse) Lysate at 40 ug

Primary: Anti-ECM1 (SL0776R) at 1/300 dilution

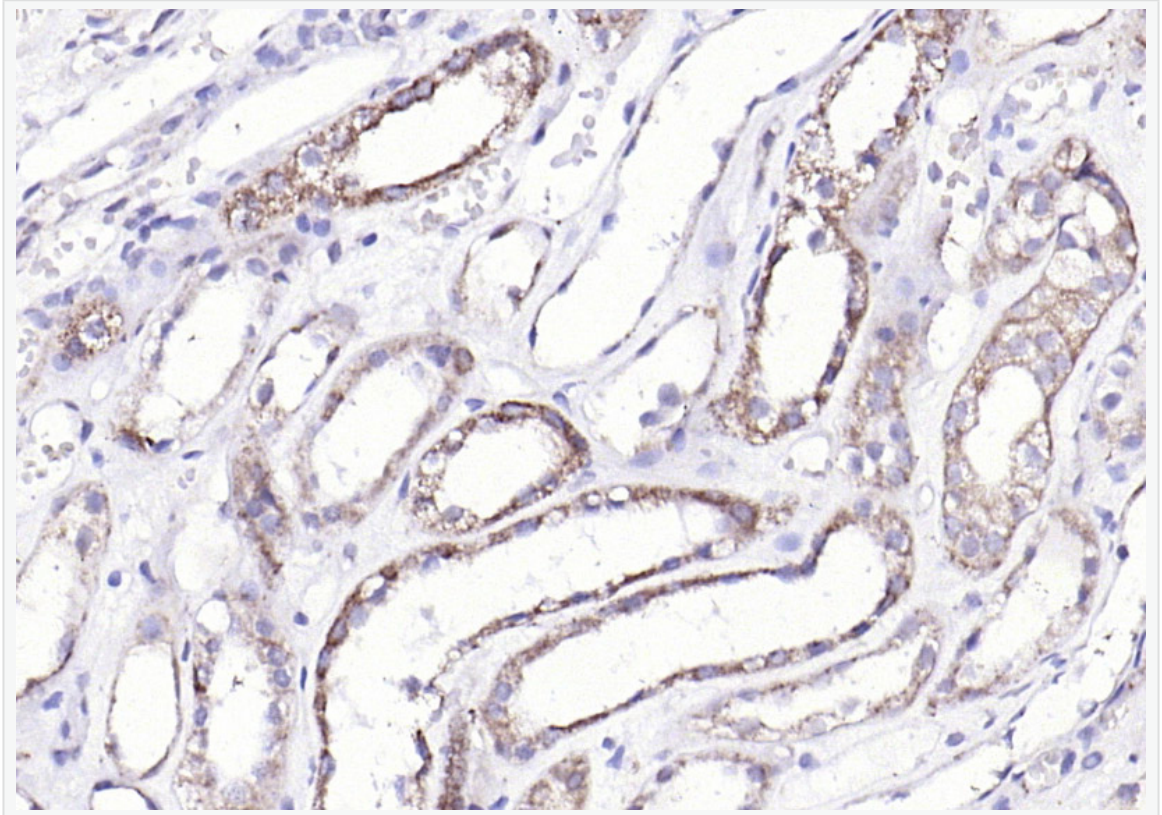
Secondary: IRDye800CW Goat Anti-Rabbit IgG at 1/20000 dilution

Predicted band size: 59 kD

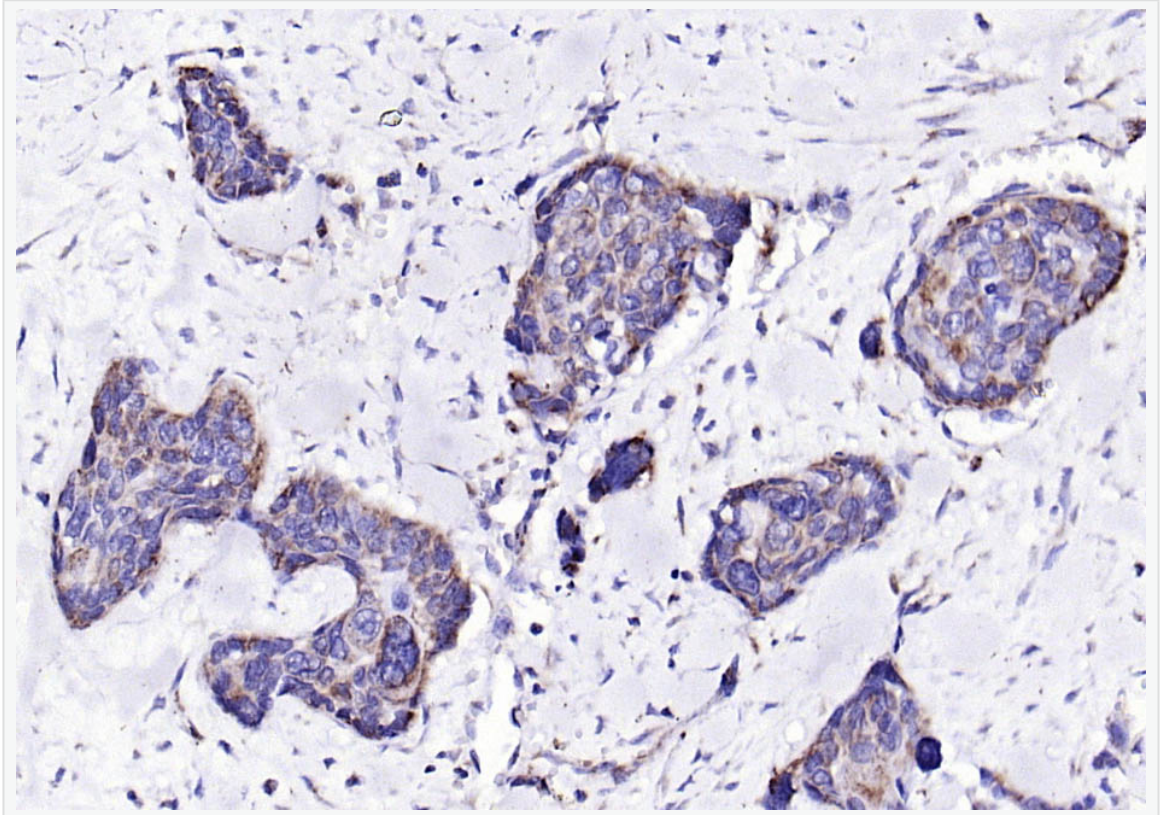
Observed band size: 64 kD



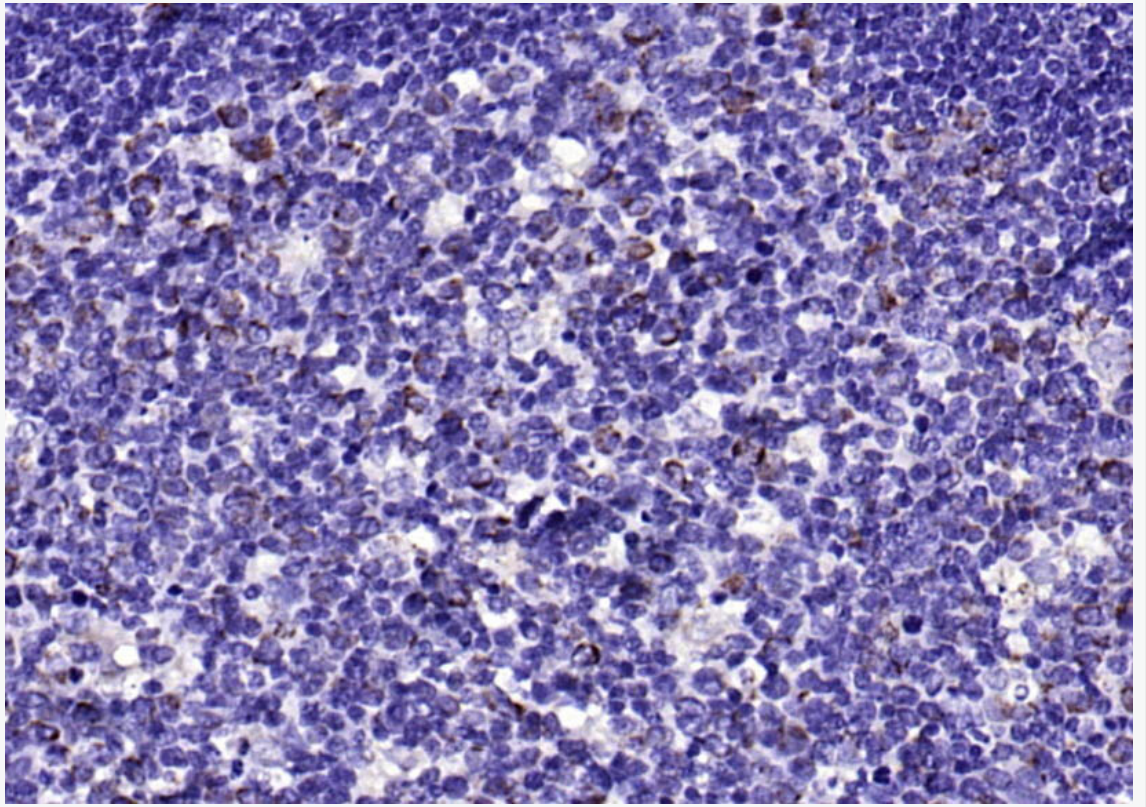
Paraformaldehyde-fixed, paraffin embedded (human breast carcinoma); Antigen retrieval by boiling in sodium citrate buffer (pH6.0) for 15min; Block endogenous peroxidase by 3% hydrogen peroxide for 20 minutes; Blocking buffer (normal goat serum) at 37°C for 30min; Antibody incubation with (ECM1) Polyclonal Antibody, Unconjugated (SL0776R) at 1:200 overnight at 4°C, followed by operating according to SP Kit(Rabbit) (sp-0023) instructions and DAB staining.



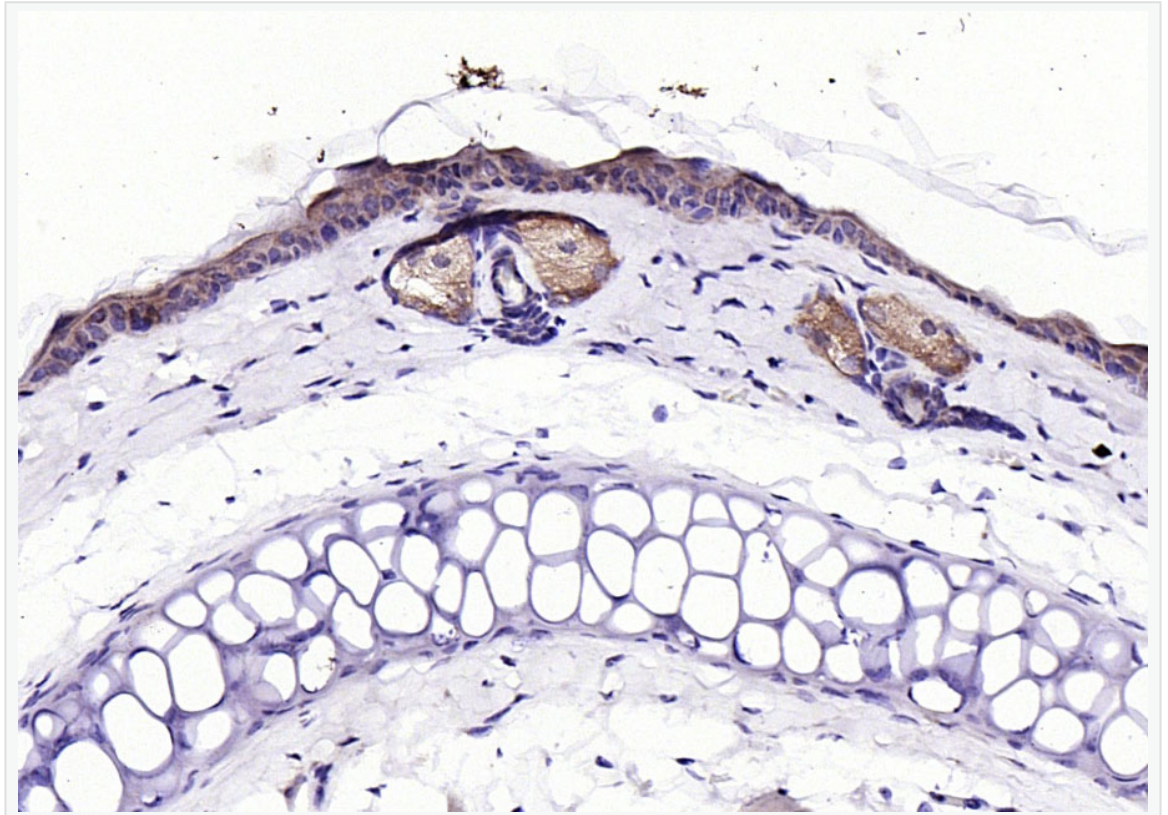
Paraformaldehyde-fixed, paraffin embedded (Human kidney); Antigen retrieval by boiling in sodium citrate buffer (pH6.0) for 15min; Block endogenous peroxidase by 3% hydrogen peroxide for 20 minutes; Blocking buffer (normal goat serum) at 37°C for 30min; Antibody incubation with (ECM1) Polyclonal Antibody, Unconjugated (SL0776R) at 1:200 overnight at 4°C, followed by operating according to SP Kit(Rabbit) (sp-0023) instructions and DAB staining.



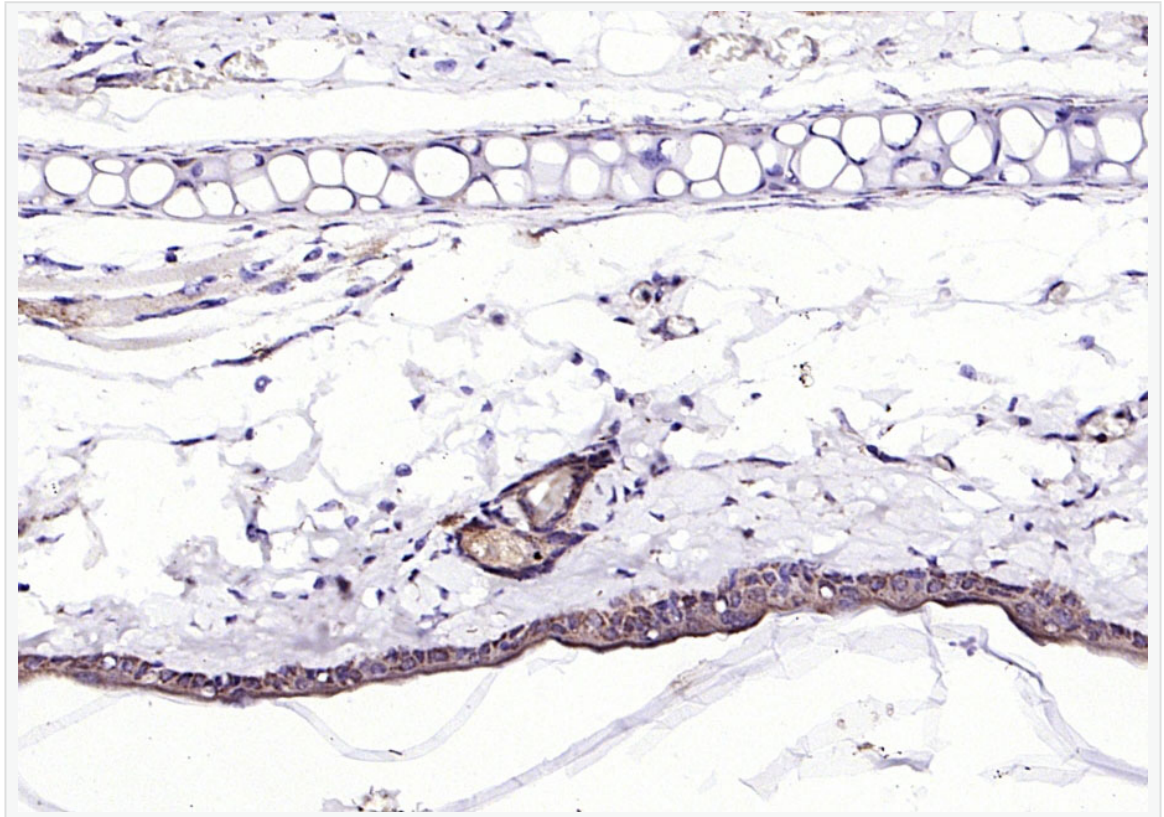
Paraformaldehyde-fixed, paraffin embedded (Human esophageal); Antigen retrieval by boiling in sodium citrate buffer (pH6.0) for 15min; Block endogenous peroxidase by 3% hydrogen peroxide for 20 minutes; Blocking buffer (normal goat serum) at 37°C for 30min; Antibody incubation with (ECM1) Polyclonal Antibody, Unconjugated (SL0776R) at 1:200 overnight at 4°C, followed by operating according to SP Kit(Rabbit) (sp-0023) instructions and DAB staining.



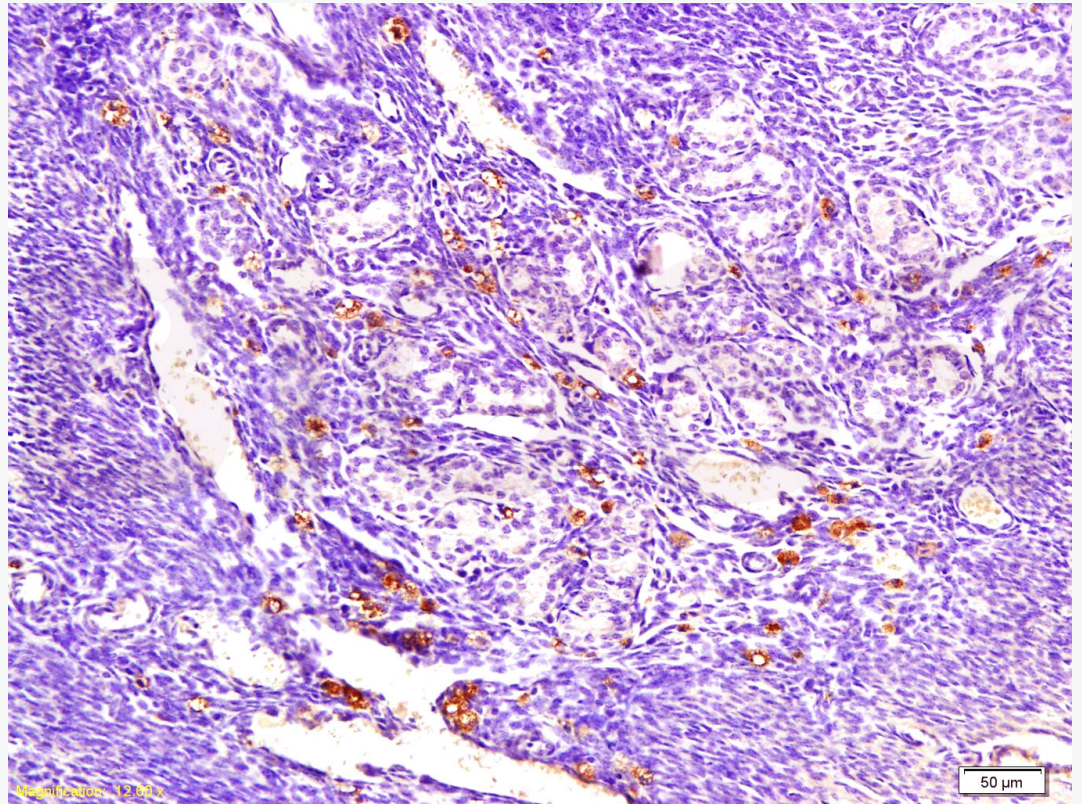
Paraformaldehyde-fixed, paraffin embedded (human tonsil); Antigen retrieval by boiling in sodium citrate buffer (pH6.0) for 15min; Block endogenous peroxidase by 3% hydrogen peroxide for 20 minutes; Blocking buffer (normal goat serum) at 37°C for 30min; Antibody incubation with (ECM1) Polyclonal Antibody, Unconjugated (SL0776R) at 1:200 overnight at 4°C, followed by operating according to SP Kit(Rabbit) (sp-0023) instructions and DAB staining.



Paraformaldehyde-fixed, paraffin embedded (mouse skin); Antigen retrieval by boiling in sodium citrate buffer (pH6.0) for 15min; Block endogenous peroxidase by 3% hydrogen peroxide for 20 minutes; Blocking buffer (normal goat serum) at 37°C for 30min; Antibody incubation with (ECM1) Polyclonal Antibody, Unconjugated (SL0776R) at 1:200 overnight at 4°C, followed by operating according to SP Kit(Rabbit) (sp-0023) instructions and DAB staining.



Paraformaldehyde-fixed, paraffin embedded (rat skin); Antigen retrieval by boiling in sodium citrate buffer (pH6.0) for 15min; Block endogenous peroxidase by 3% hydrogen peroxide for 20 minutes; Blocking buffer (normal goat serum) at 37°C for 30min; Antibody incubation with (ECM1) Polyclonal Antibody, Unconjugated (SL0776R) at 1:200 overnight at 4°C, followed by operating according to SP Kit(Rabbit) (sp-0023) instructions and DAB staining.



Tissue/cell: mouse endometrium tissue; 4% Paraformaldehyde-fixed and paraffin-embedded;

Antigen retrieval: citrate buffer ( 1M, pH 6.0 ), Boiling bathing for 15min; Block endogenous peroxidase by 3% Hydrogen peroxide for 30min; Blocking buffer (normal goat serum,C-0005) at 37°C for 20 min;

Incubation: Anti-ECM1 Polyclonal Antibody, Unconjugated(SL0776R) 1:300, overnight at 4°C, followed by conjugation to the secondary antibody(SP-0023) and DAB(C-0010) staining