

## Rabbit Anti-FAM3A antibody

SL0773R

<b>Product Name</b>	FAM3A
<b>Chinese Name</b>	胰腺衍生因子抗体
<b>Alias</b>	C21orf11; Cytokine like protein 2 21; PRED44; PANcreatic DERived factor; Protein FAM3B; Protein FAM3B precursor; Family with sequence similarity 3, member B isoform a; FAM3A_HUMAN; Protein FAM3A; Cytokine-like protein 2-19.
<b>Immunogen Species</b>	Rabbit
<b>Clonality</b>	Polyclonal
<b>React Species</b>	Mouse, (predicted: Human, Rat, )
<b>Applications</b>	WB=1:500-2000 (Paraffin sections need antigen repair ) not yet tested in other applications. optimal dilutions/concentrations should be determined by the end user.
<b>Theoretical molecular weight</b>	26kDa
<b>Cellular localization</b>	The nucleus Secretory protein
<b>Form</b>	Liquid
<b>Concentration</b>	1mg/ml
<b>immunogen</b>	KLH conjugated synthetic peptide derived from human FAM3A: 151-230/230
<b>Lsotype</b>	IgG
<b>Purification</b>	affinity purified by Protein A
<b>Buffer Solution</b>	1M TBS(pH7.4) with 1% BSA, 3% Proclin300 and 50% Glycerol.
<b>Storage</b>	Shipped at 4°C. Store at -20 °C for one year. Avoid repeated freeze/thaw cycles.
<b>Attention</b>	This product as supplied is intended for research use only, not for use in human, therapeutic or diagnostic applications.
<b>PubMed</b>	<a href="#">PubMed</a>
<b>Product Detail</b>	FAM3A (Family with sequence similarity 3, member A; MGC143089), [SUBCELLULAR LOCATION] Secreted. [TISSUE SPECIFICITY] In similar amounts in testis, pancreas, adrenal, placenta, brain, fetal brain, liver,

kidney, skeletal muscle and heart. Belongs to the FAM3 family.

**Function:**

May act as a defensin against invading fungal microorganisms.

**Subcellular Location:**

Secreted (Potential).

**Tissue Specificity:**

In similar amounts in testis, pancreas, adrenal, placenta, brain, fetal brain, liver, kidney, skeletal muscle and heart.

**Similarity:**

Belongs to the FAM3 family.

**SWISS:**

P98173

**Gene ID:**

60343

**Database links:**

[Entrez Gene: 60343](#) Human

[Entrez Gene: 501664](#) Rat

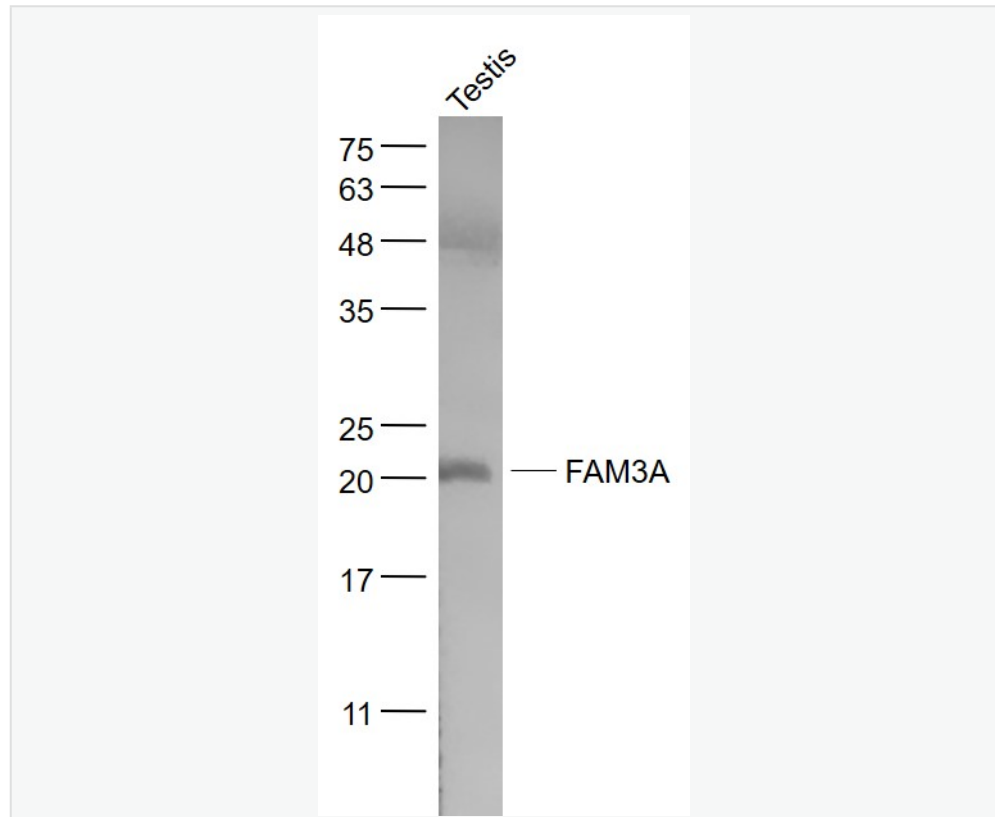
[Olim: 300492](#) Human

[SwissProt: P98173](#) Human

[Unigene: 289108](#) Human

胰腺衍生因子(FAM3A)是新发现的一种新型的胰岛 cell factor、由胰岛  $\alpha$  细胞和  $\beta$  细胞分泌的一种分泌型 cell factor, 与  $\beta$ Apoptosis 密切相关, 可以诱导胰岛素分泌  $\beta$  细胞, 主要用于 Diabetes 的研究。

**Product Picture**



Sample:

Testis (Mouse) Lysate at 40 ug

Primary: Anti- FAM3A (SL0773R) at 1/1000 dilution

Secondary: IRDye800CW Goat Anti-Rabbit IgG at 1/20000 dilution

Predicted band size: 26 kD

Observed band size: 20 kD