

## Rabbit Anti-SFTPA1 antibody

SL0770R

**Product Name** SFTPA1

**Chinese Name** 肺表面活性蛋白 A 抗体

**Alias** SP-A; SFTPA2; SFTPA1; Surfactant Protein A; pulmonary surfactant-associated glycoprotein A; Pulmonary surfactant-associated protein A2 precursor; SP-A1; SP-A2; SP-A; PSP-A; PSPA; Alveolar proteinosis protein; 35 kDa pulmonary surfactant-associated protein; MGC133365; Pulmonary surfactant apoprotein; Pulmonary surfactant associated protein; SFTP1; SFTPA; SFTPA1B; SP A; SP A1; Surfactant pulmonary associated protein A1; PSPA; SPA2; SFTP1; SPAII; COLEC5; SFTPA2B; SFTA1\_HUMAN; SFPA2\_HUMAN; Pulmonary surfactant-associated protein A1; Pulmonary surfactant-associated protein A2.

**Research Area** Tumour Cell biology immunology Signal transduction Cell Surface Molecule

**Immunogen Species** Rabbit

**Clonality** Polyclonal

**React Species** Human, Mouse, Rat,

**Applications** IHC-P=1:100-500,IHC-F=1:100-500,IF=1:100-500 (Paraffin sections need antigen repair)  
not yet tested in other applications.  
optimal dilutions/concentrations should be determined by the end user.

**Theoretical molecular weight** 25kDa

**Cellular localization** Extracellular matrix Secretory protein

**Form** Liquid

**Concentration** 1mg/ml

**immunogen** KLH conjugated synthetic peptide derived from human SFTPA2/SFTPA1: 23-120/248

**Lsotype** IgG

**Purification** affinity purified by Protein A

**Buffer Solution** 1M TBS(pH7.4) with 1% BSA, 3% Proclin300 and 50% Glycerol.



---

<b>Storage</b>	Shipped at 4°C. Store at -20 °C for one year. Avoid repeated freeze/thaw cycles.
<b>Attention</b>	This product as supplied is intended for research use only, not for use in human, therapeutic or diagnostic applications.
<b>PubMed</b>	<a href="#">PubMed</a> This gene is one of several genes encoding pulmonary-surfactant associated proteins (SFTPA) located on chromosome 10. Mutations in this gene and a highly similar gene located nearby, which affect the highly conserved carbohydrate recognition domain, are associated with idiopathic pulmonary fibrosis. The current version of the assembly displays only a single centromeric SFTPA gene pair rather than the two gene pairs shown in the previous assembly which were thought to have resulted from a duplication. [provided by RefSeq, Sep 2009]
<b>Product Detail</b>	<b>Function:</b> In presence of calcium ions, it binds to surfactant phospholipids and contributes to lower the surface tension at the air-liquid interface in the alveoli of the mammalian lung and is essential for normal respiration.
	<b>Subunit:</b> Oligomeric complex of 6 set of homotrimers.
	<b>Subcellular Location:</b> Secreted, extracellular space, extracellular matrix. Secreted, extracellular space, surface film.
	<b>DISEASE:</b> Defects in SFTPA2 are a cause of pulmonary fibrosis idiopathic (IPF) [MIM:178500]. Pulmonary fibrosis is a lung disease characterized by shortness of breath, radiographically evident diffuse pulmonary infiltrates, and varying degrees of inflammation and fibrosis on biopsy. It results in acute lung injury with subsequent scarring and endstage lung disease.
	<b>Similarity:</b> Belongs to the SFTPA family. Contains 1 C-type lectin domain. Contains 1 collagen-like domain.
	<b>SWISS:</b> Q8IWL2
<b>Gene ID:</b> 653509	
<b>Database links:</b>	

[Entrez Gene: 610540](#) Dog

[Entrez Gene: 653509](#) Human

[Omim: 178630](#) Human

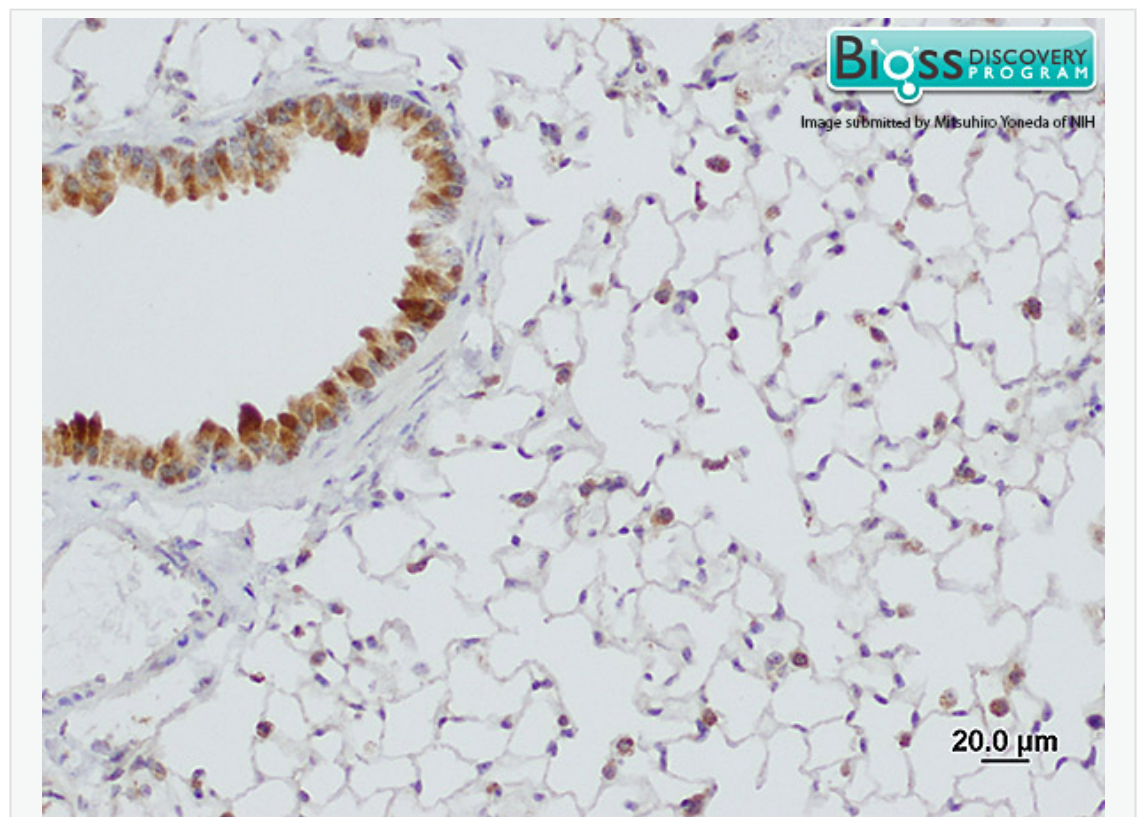
[SwissProt: P06908](#) Dog

[SwissProt: Q8IWL2](#) Human

[Unigene: 535295](#) Human

肺泡表面活性物质 A (SP-A) 属糖 Binding protein 家族,参与肺泡表面活性膜的形成和代谢,除在II型细胞中强烈表达外,在细支气管、支气管上皮内也有灶性表达。

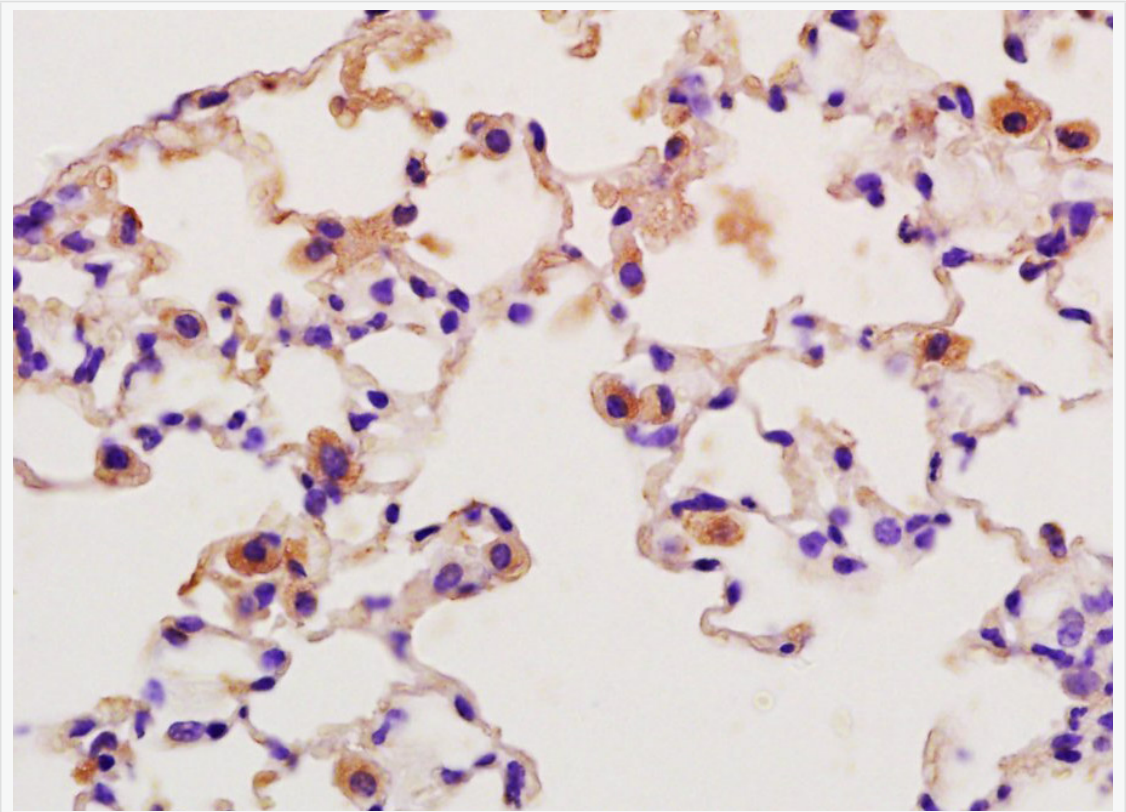
## Product Picture



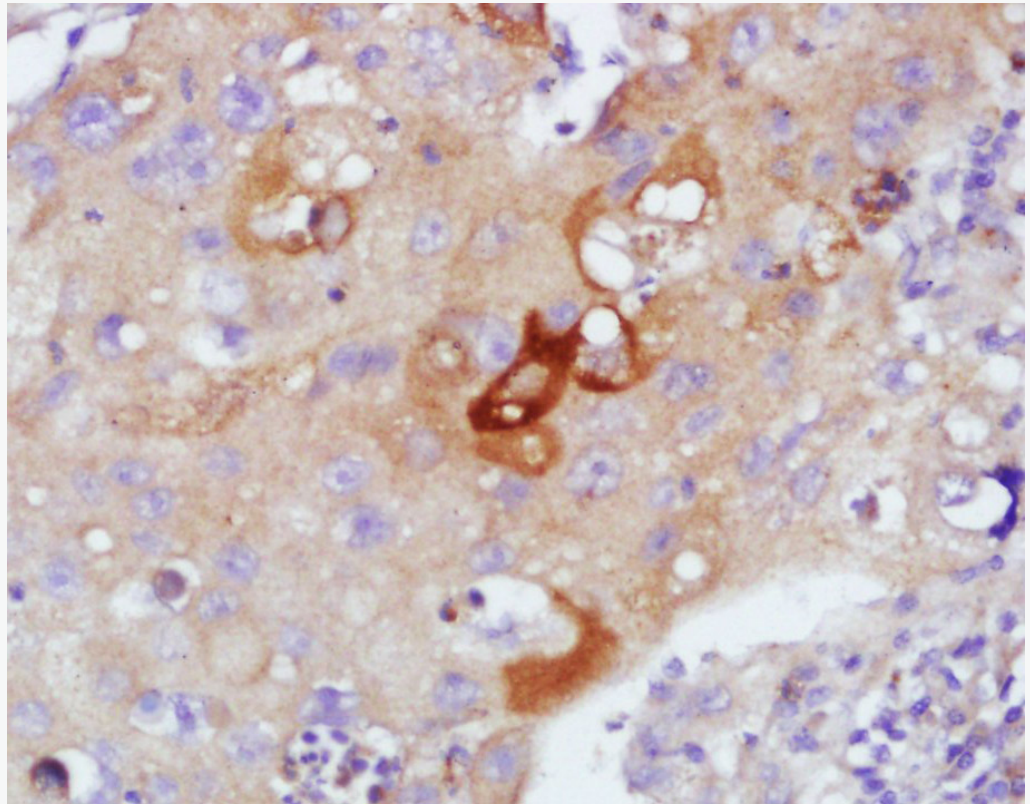
Formalin-fixed and paraffin embedded mouse lung tissue labeled Anti-SP-A

Polyclonal Antibody, Unconjugated (SL0770R) at 1:2000, followed by conjugation

to the secondary antibody and DAB staining



Tissue/cell: rat lung tissue; 4% Paraformaldehyde-fixed and paraffin-embedded;  
Antigen retrieval: citrate buffer ( 1M, pH 6.0 ), Boiling bathing for 15min; Block  
endogenous peroxidase by 3% Hydrogen peroxide for 30min; Blocking buffer  
(normal goat serum,C-0005) at 37°C for 20 min;  
Incubation: Anti-SP-A Polyclonal Antibody, Unconjugated(SL0770R) 1:200,  
overnight at 4°C, followed by conjugation to the secondary antibody(SP-0023) and  
DAB(C-0010) staining



Tissue/cell: human lung carcinoma; 4% Paraformaldehyde-fixed and paraffin-embedded;

Antigen retrieval: citrate buffer ( 1M, pH 6.0 ), Boiling bathing for 15min; Block endogenous peroxidase by 3% Hydrogen peroxide for 30min; Blocking buffer (normal goat serum,C-0005) at 37°C for 20 min;

Incubation: Anti-SP-A Polyclonal Antibody, Unconjugated(SL0770R) 1:200, overnight at 4°C, followed by conjugation to the secondary antibody(SP-0023) and DAB(C-0010) staining