

## Rabbit Anti-IL12 antibody

SL0767R

**Product Name** IL12

**Chinese Name** 白介素 12 抗体

**Alias**

Interleukin-12 subunit alpha; IL-12; CLMF p35; CLMF1; CTL maturation factor (TeMF); Cytotoxic lymphocyte maturation factor 1; Cytotoxic lymphocyte maturation factor 35 kDa subunit; IL 12 subunit p35; IL12A; Interleukin 12 alpha chain; Interleukin 12 p35; Interleukin 12A; Natural killer cell stimulatory factor 1; Cytotoxic lymphocyte maturation factor 35 kDa subunit; IL-12 subunit p35; NK cell stimulatory factor chain 1; NKSF1; IL-12A; IL12A\_HUMAN; IL12A\_MOUSE.

**Research Area**

Tumour Cell biology immunology

**Immunogen Species**

Rabbit

**Clonality**

Polyclonal

**React Species**

Mouse, Rat,

**Applications**

WB=1:500-2000,IHC-P=1:100-500,IHC-F=1:100-500,IF=1:100-500,Flow-Cyt=1µg/Test  
(Paraffin sections need antigen repair)  
not yet tested in other applications.  
optimal dilutions/concentrations should be determined by the end user.

**Theoretical molecular weight**

22kDa

**Cellular localization**

The cell membrane Secretory protein

**Form**

Liquid

**Concentration** 1mg/ml

**immunogen**

KLH conjugated synthetic peptide derived from mouse IL-12: 51-150/215

**Lsotype**

IgG

**Purification**

affinity purified by Protein A

**Buffer Solution**

1M TBS(pH7.4) with 1% BSA, 3% Proclin300 and 50% Glycerol.

**Storage**

Shipped at 4°C. Store at -20 °C for one year. Avoid repeated freeze/thaw cycles.



**Attention**

This product as supplied is intended for research use only, not for use in human, therapeutic or diagnostic applications.

**PubMed**

[PubMed](#)

IL-12 protein is a cytokine produced primarily by monocytes and to a lesser extent by lymphocytes. This cytokine has pleiotropic effects in immunoregulation and inflammation. It down-regulates the expression of Th1 cytokines, MHC class II Ags, and costimulatory molecules on macrophages. It also enhances B cell survival, proliferation, and antibody production. This cytokine can block NF-kappa B activity, and is involved in the regulation of the JAK-STAT signaling pathway. Knockout studies in mice suggested the function of this cytokine as an essential immunoregulator in the intestinal tract.

**Function:**

Cytokine that can act as a growth factor for activated T and NK cells, enhance the lytic activity of NK/lymphokine-activated Killer cells, and stimulate the production of IFN-gamma by resting PBMC.

**Subunit:**

Heterodimer with IL12B; disulfide-linked. The heterodimer is known as interleukin IL-12.

**Subcellular Location:**

Secreted.

**Product  
Detail**

**Similarity:**

Belongs to the IL-6 superfamily.

**SWISS:**

P43431

**Gene ID:**

16159

**Database links:**

[Entrez Gene: 3592](#) Human

[Entrez Gene: 16159](#) Mouse

[Entrez Gene: 84405](#) Rat

[Omim: 161560](#) Human

[SwissProt: P29459](#) Human

[SwissProt: P43431](#) Mouse

[SwissProt: Q9R103](#) Rat

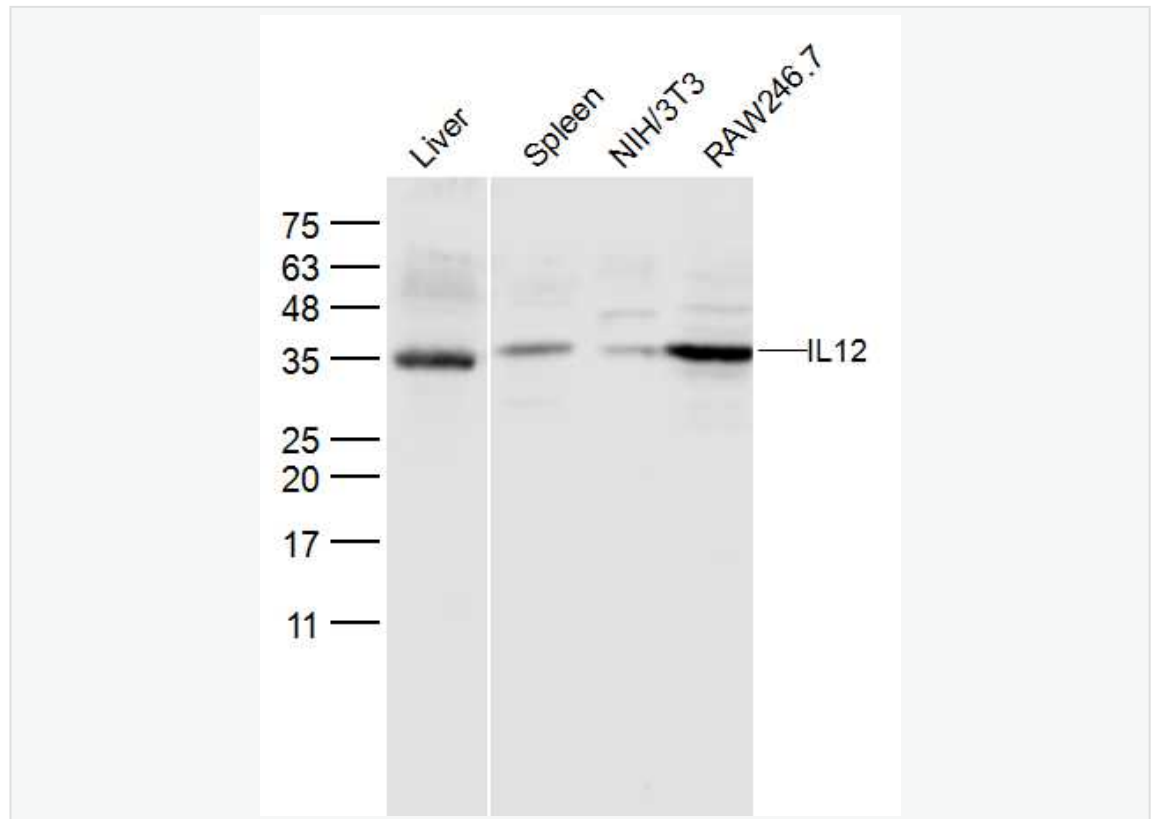
[Unigene: 673](#) Human

[Unigene: 103783](#) Mouse

[Unigene: 207199](#) Rat

IL-12 是新近发现的 cell factor，具有多种生物学活性，尤其是在抗 Tumour 免疫和抗病毒免疫中有重要的作用。

**Product  
Picture**



Sample:

Liver (Mouse) Lysate at 40 ug

Spleen (Mouse) Lysate at 40 ug

NIH/3T3 (Mouse) CellLysate at 30 ug

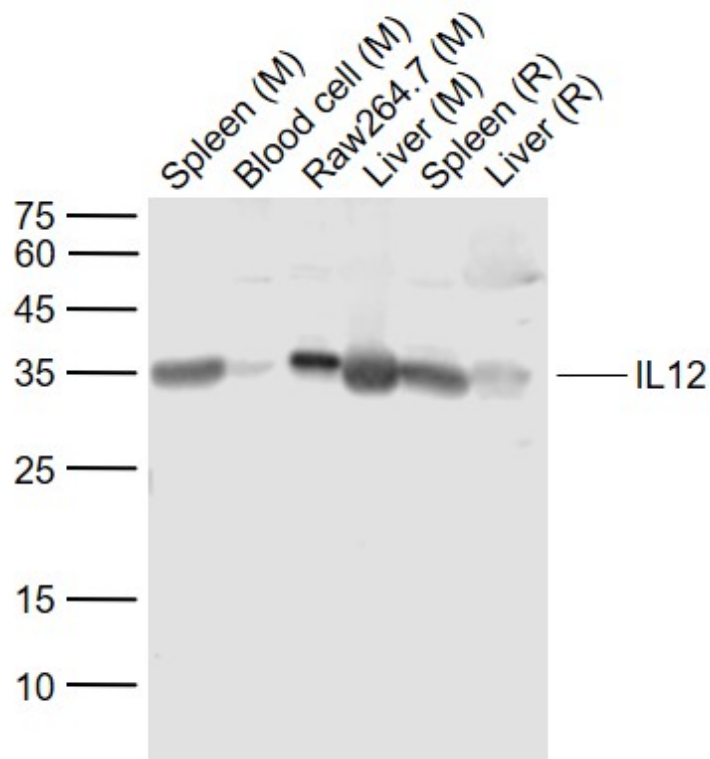
RAW246.7 (Mouse) CellLysate at 30 ug

Primary: Anti- IL12 (SL0767R) at 1/300 dilution

Secondary: IRDye800CW Goat Anti-Rabbit IgG at 1/20000 dilution

Predicted band size: 22 kD

Observed band size: 35/36 kD



Sample:

Lane 1: Spleen (Mouse) Lysate at 40 ug

Lane 2: Blood cell (Mouse) Lysate at 40 ug

Lane 3: Raw264.7 (Mouse) Cell Lysate at 30 ug

Lane 4: Liver (Mouse) Lysate at 40 ug

Lane 5: Spleen (Rat) Lysate at 40 ug

Lane 6: Liver (Rat) Lysate at 40 ug

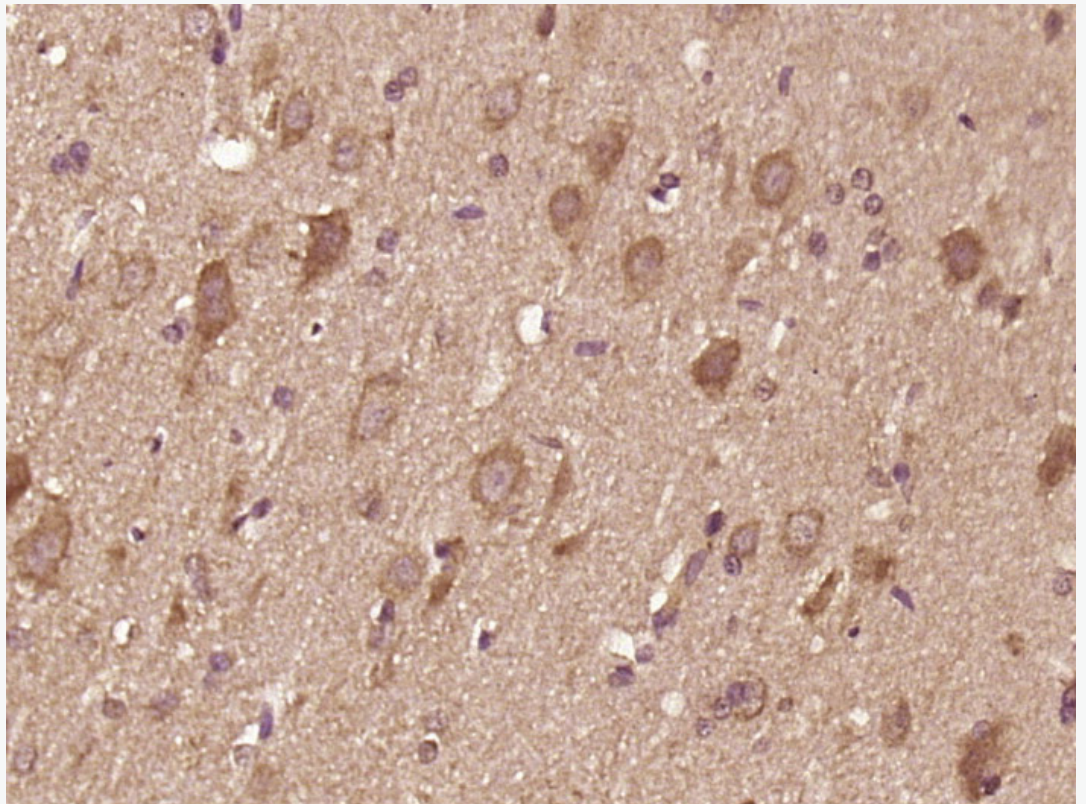
Primary:

Anti-IL12 (SL0767R) at 1/1000 dilution

Secondary: IRDye800CW Goat Anti-Rabbit IgG at 1/20000 dilution

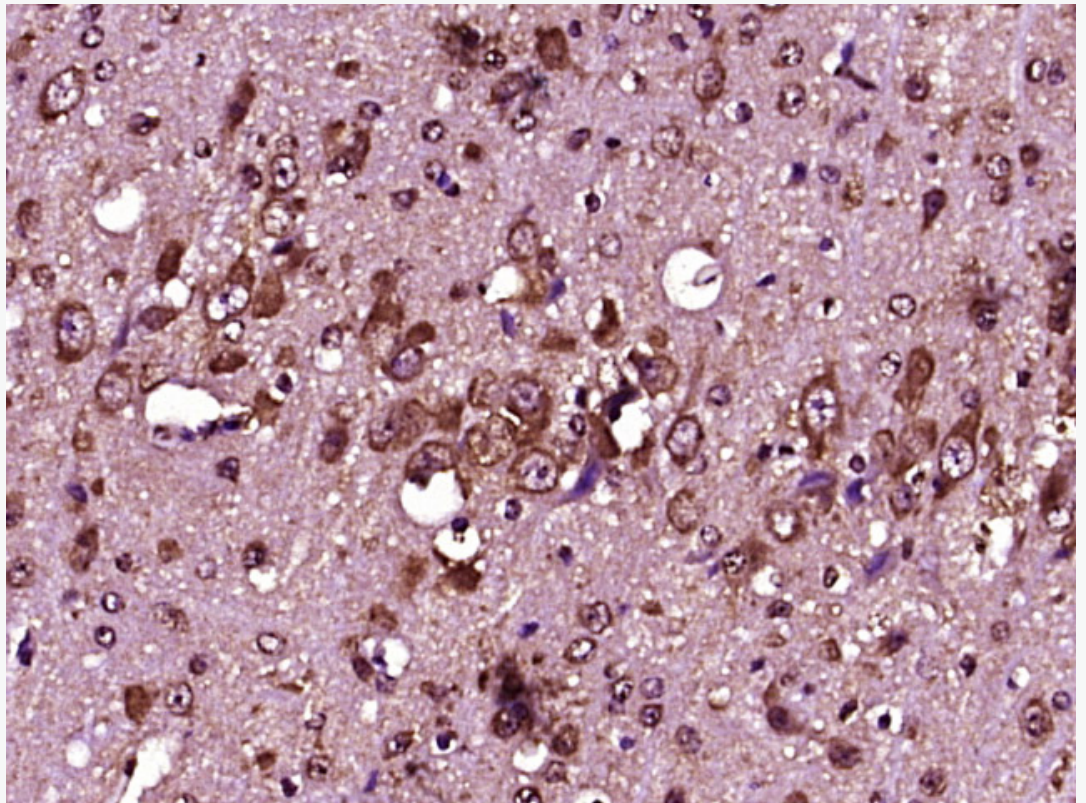
Predicted band size: 33 kD

Observed band size: 35 kD

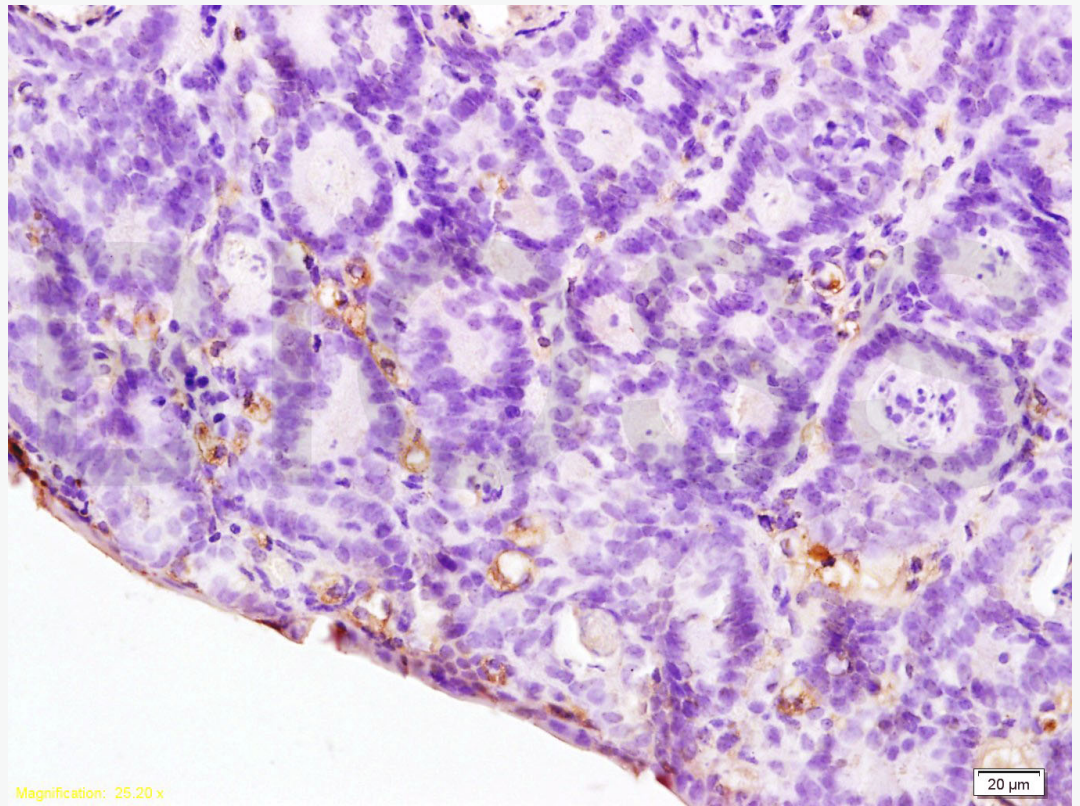


Paraformaldehyde-fixed, paraffin embedded (rat brain tissue); Antigen retrieval by boiling in sodium citrate buffer (pH6.0) for 15min; Block endogenous peroxidase by 3% hydrogen peroxide for 20 minutes; Blocking buffer (normal goat serum) at 37°C

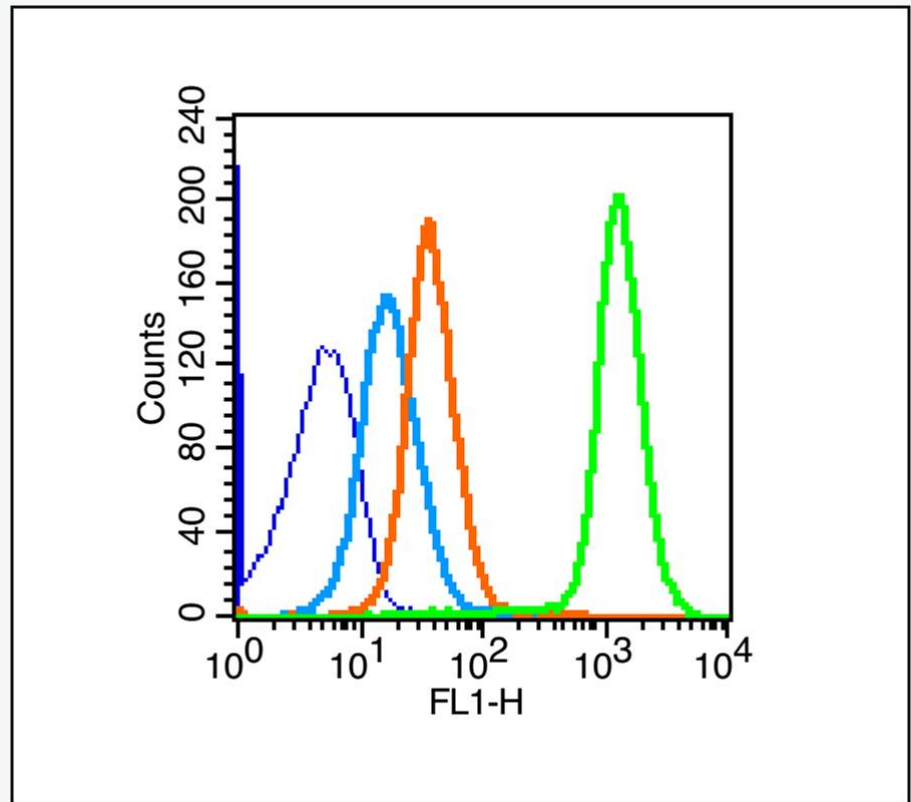
for 30min; Antibody incubation with (IL12) Polyclonal Antibody, Unconjugated (SL0767R) at 1:400 overnight at 4°C, followed by operating according to SP Kit(Rabbit) (sp-0023) instructions and DAB staining.



Paraformaldehyde-fixed, paraffin embedded (Mouse brain); Antigen retrieval by boiling in sodium citrate buffer (pH6.0) for 15min; Block endogenous peroxidase by 3% hydrogen peroxide for 20 minutes; Blocking buffer (normal goat serum) at 37°C for 30min; Antibody incubation with (IL12) Polyclonal Antibody, Unconjugated (SL0767R) at 1:400 overnight at 4°C, followed by operating according to SP Kit(Rabbit) (sp-0023) instructions and DAB staining.



Tissue/cell: rat colitis tissue; 4% Paraformaldehyde-fixed and paraffin-embedded;  
Antigen retrieval: citrate buffer ( 1M, pH 6.0 ), Boiling bathing for 15min; Block  
endogenous peroxidase by 3% Hydrogen peroxide for 30min; Blocking buffer (normal  
goat serum,C-0005) at 37°C for 20 min;  
Incubation: Anti-IL-12 Polyclonal Antibody, Unconjugated(SL0767R) 1:200,  
overnight at 4°C, followed by conjugation to the secondary antibody(SP-0023) and  
DAB(C-0010) staining



Blank control (blue line): Mouse spleen (blue).

Primary Antibody (green line): Rabbit Anti- IL12 antibody (SL0767R)

Dilution:  $1\mu\text{g}/10^6$  cells;

Isotype Control Antibody (orange line): Rabbit IgG .

Secondary Antibody (white blue line): Goat anti-rabbit IgG-FITC

Dilution:  $1\mu\text{g}/\text{test}$ .

#### Protocol

The cells were fixed with 70% ice-cold methanol overnight at  $4^{\circ}\text{C}$ . Cells stained with Primary Antibody for 30 min at room temperature. The cells were then incubated in 1 X PBS/2%BSA/10% goat serum to block non-specific protein-protein interactions



followed by the antibody for 15 min at room temperature. The secondary antibody used for 40 min at room temperature. Acquisition of 20,000 events was performed.