

## Rabbit Anti-CD3E antibody

SL0765R

**Product Name** CD3E

**Chinese Name** CD3/CD3-ε 抗体

**Alias** CD3 epsilon; CD3e antigen epsilon polypeptide (TiT3 complex); CD3E antigen epsilon polypeptide; CD3E antigen, epsilon subunit; CD3e molecule epsilon; CD3e molecule, epsilon (CD3 TCR complex); CD3e molecule, epsilon (CD3-TCR complex); CD3E\_HUMAN; IMD18; T cell antigen receptor complex epsilon subunit of T3; T cell surface antigen T3/Leu 4 epsilon chain; T cell surface glycoprotein CD3 epsilon chain; T-cell surface antigen T3/Leu-4 epsilon chain; T-cell surface glycoprotein CD3 epsilon chain; T3E; TCRE.

**Research Area** Tumour Cell biology immunology Stem cells The cell membrane 受体 Cell Surface Molecule lymphocyte t-lymphocyte

**Immunogen Species** Rabbit

**Clonality** Polyclonal

**React Species** Mouse(predicted:Human,Rat)

**Applications** WB=1:500-2000,IHC-P=1:100-500,IHC-F=1:100-500,IF=1:100-500 (Paraffin sections need antigen repair)  
not yet tested in other applications.  
optimal dilutions/concentrations should be determined by the end user.

**Theoretical molecular weight** 20kDa

**Detection molecular weight** 20 kDa

**Cellular localization** The cell membrane

**Form** Liquid

**Concentration** 1mg/ml

**immunogen** KLH conjugated synthetic peptide derived from mouse CD3E: 101-189/189 <Cytoplasmic>

**Lsotype** IgG



---

<b>Purification</b>	affinity purified by Protein A
<b>Buffer Solution</b>	Mouse(predicted:Human,Rat)1M TBS(pH7.4) with 1% BSA, Mouse(predicted:Human,Rat)3% Proclin300 and 50% Glycerol.
<b>Storage</b>	Shipped at 4°C. Store at -20 °C for one year. Avoid repeated freeze/thaw cycles.
<b>Attention</b>	This product as supplied is intended for research use only, not for use in human, therapeutic or diagnostic applications.
<b>PubMed</b>	<a href="#">PubMed</a> <p>The protein encoded by this gene is the CD3-epsilon polypeptide, which together with CD3-gamma, -delta and -zeta, and the T-cell receptor alpha/beta and gamma/delta heterodimers, forms the T-cell receptor-CD3 complex. This complex plays an important role in coupling antigen recognition to several intracellular signal-transduction pathways. The genes encoding the epsilon, gamma and delta polypeptides are located in the same cluster on chromosome 11. The epsilon polypeptide plays an essential role in T-cell development. Defects in this gene cause immunodeficiency. This gene has also been linked to a susceptibility to type I diabetes in women. [provided by RefSeq, Jul 2008].</p>
<b>Product Detail</b>	<p><b>Function:</b> The CD3 complex mediates signal transduction.</p> <p><b>Subunit:</b> The TCR/CD3 complex of T-lymphocytes consists of either a TCR alpha/beta or TCR gamma/delta heterodimer coexpressed at the cell surface with the invariant subunits of CD3 labeled gamma, delta, epsilon, zeta, and eta.</p> <p><b>Subcellular Location:</b> Membrane; Single-pass type I membrane protein.</p> <p><b>Similarity:</b> Contains 1 Ig-like (immunoglobulin-like) domain. Contains 1 ITAM domain.</p> <p><b>SWISS:</b> P22646</p> <p><b>Gene ID:</b> 12501</p> <p><b>Database links:</b> <a href="#">Entrez Gene: 916</a> Human <a href="#">Entrez Gene: 12501</a> Mouse</p>

[Omin: 186830](#) Human

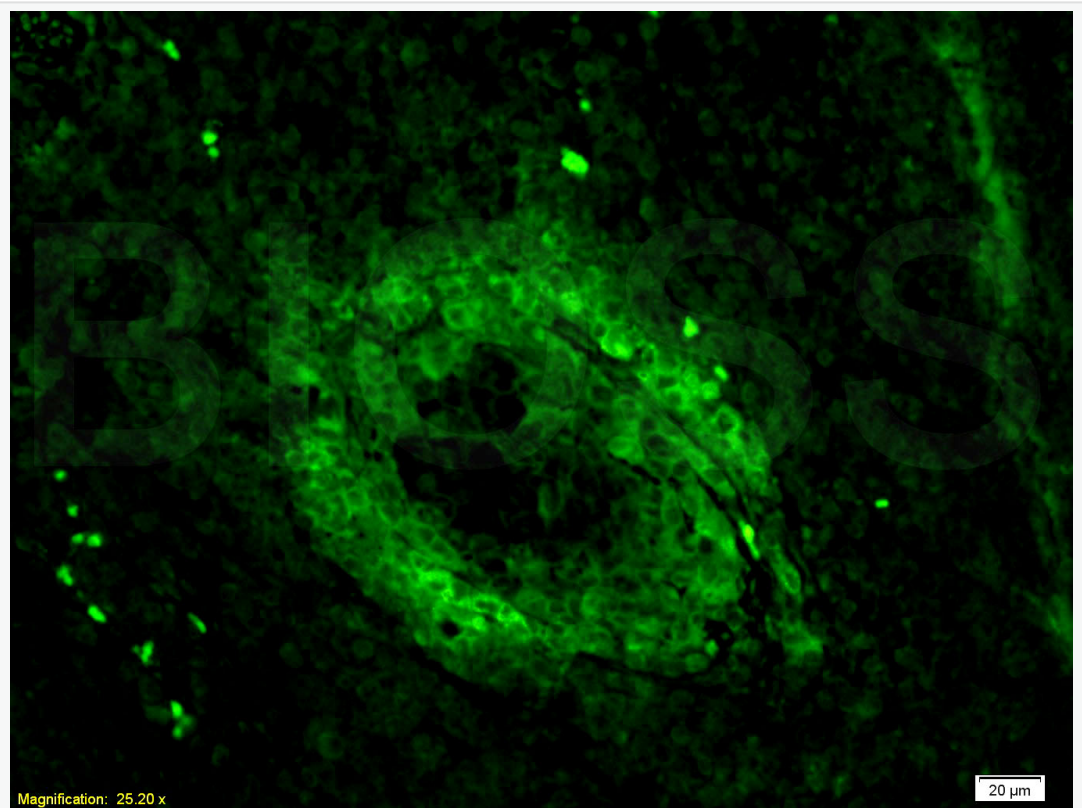
[SwissProt: P07766](#) Human

[SwissProt: P22646](#) Mouse

[Unigene: 3003](#) Human

[Unigene: 210361](#) Mouse

## Product Picture



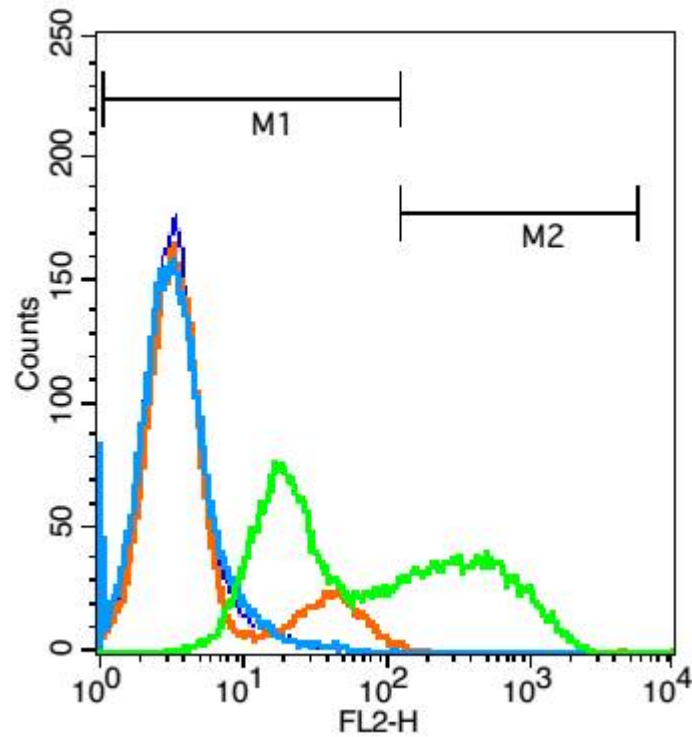
Tissue/cell: mouse lymphoma tissue;4% Paraformaldehyde-fixed and paraffin-embedded;

Antigen retrieval: citrate buffer ( Mouse(predicted:Human,Rat)1M, pH 6.0 ),

Boiling bathing for 15min; Blocking buffer (normal goat serum,C-0005) at 37°C for 20 min;

Incubation: Anti-CD3 Polyclonal Antibody, Unconjugated(SL0765R) 1:200,

overnight at 4°C; The secondary antibody was Goat Anti-Rabbit IgG, FITC conjugated(SL0295G-FITC)used at 1:200 dilution for 40 minutes at 37°C.



Blank control: Jurkat cells(blue).

Primary Antibody:Rabbit Anti-CD3E antibody(SL0765R), Dilution: 3μg in 100 μL 1X PBS containing 0.5% BSA;

Isotype Control Antibody: Rabbit IgG(orange) ,used under the same conditions );

Secondary Antibody: Goat anti-rabbit IgG-PE(white blue), Dilution: 1:200 in 1 X PBS containing 0.5% BSA.

Protocol

The cells were fixed with 2% paraformaldehyde (10 min) . Primary antibody

(SL0765R,  $3\mu\text{g} / 1 \times 10^6$  cells) were incubated for 30 min on the ice, followed by 1 X PBS containing 0.5% BSA + 1 0% goat serum (15 min) to block non-specific protein-protein interactions. Then the Goat Anti-rabbit IgG/PE antibody was added into the blocking buffer mentioned above to react with the primary antibody at 1/200 dilution for 30 min on ice. Acquisition of 20,000 events was performed.