

Rabbit Anti-HLA G antibody

SL0752R

Product Name HLA G

Chinese Name 人类白细胞抗原 G 抗体

Alias B2 microglobulin; DADB-15K14.8; HLA 6.0; HLA 60; HLA class I histocompatibility antigen alpha chain G; HLA class I histocompatibility antigen alpha chain G precursor; HLA class I histocompatibility antigen, alpha chain G; HLA class I molecule; HLA G; HLA G antigen; HLA G histocompatibility antigen class I G; HLA G protein; HLA G2.2; HLA G3; HLA-G; HLA-G histocompatibility antigen, class I; HLA60; HLAG; HLAG_HUMAN; Human Leukocyte Antigen G Histocompatibility Antigen Class I; Lymphocyte antigen; Major histocompatibility complex class I G; MHC class I antigen; MHC class I antigen G; MHC class Ib antigen; MHC G; Murine homolog of Qa; T Cell A Locus; T-cell A locus; TCA.

Research Area immunology

Immunogen Species Rabbit

Clonality Polyclonal

React Species Human, Rat,

Applications WB=1:500-2000,IHC-P=1:100-500,IHC-F=1:100-500,IF=1:100-500 (Paraffin sections need antigen repair)
not yet tested in other applications.
optimal dilutions/concentrations should be determined by the end user.

Theoretical molecular weight 35kDa

Cellular localization The cell membrane

Form Liquid

Concentration 1mg/ml

immunogen KLH conjugated synthetic peptide derived from the middle of human HLA-G: 181-280/338 <Extracellular>

Lsotype IgG

Purification affinity purified by Protein A



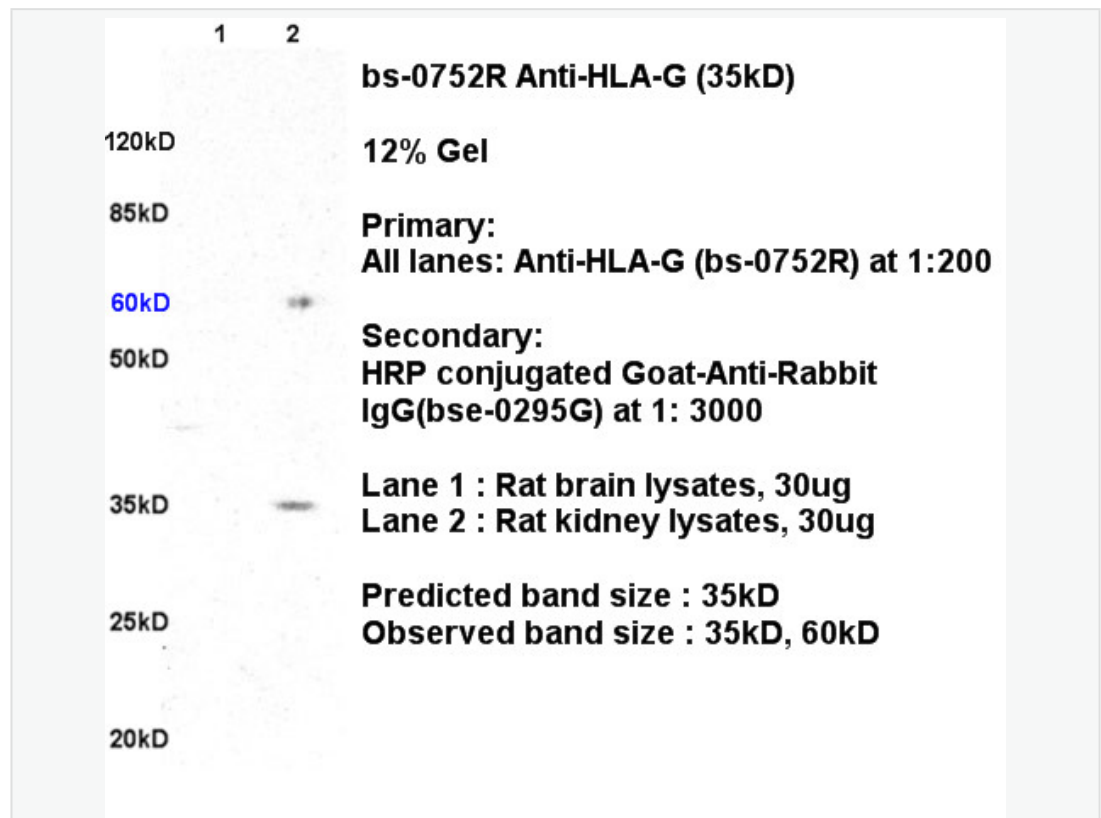
Buffer Solution	1M TBS(pH7.4) with 1% BSA, 3% Proclin300 and 50% Glycerol.
Storage	Shipped at 4°C. Store at -20 °C for one year. Avoid repeated freeze/thaw cycles.
Attention	This product as supplied is intended for research use only, not for use in human, therapeutic or diagnostic applications.
PubMed	PubMed HLA-G belongs to the HLA class I heavy chain paralogues. This class I molecule is a heterodimer consisting of a heavy chain and a light chain (beta-2 microglobulin). The heavy chain is anchored in the membrane. HLA-G is expressed on fetal derived placental cells. The heavy chain is approximately 45 kDa and its gene contains 8 exons. Exon one encodes the leader peptide, exons 2 and 3 encode the alpha1 and alpha2 domain, which both bind the peptide, exon 4 encodes the alpha3 domain, exon 5 encodes the transmembrane region, and exon 6 encodes the cytoplasmic tail. [provided by RefSeq, Jul 2008]
	Subunit: Heterodimer of an alpha chain and a beta chain (beta-2-microglobulin). Homodimer; disulfide-linked. Binds to LILRB1 and LILRB2.
	Subcellular Location: Membrane; Single-pass type I membrane protein.
Product Detail	Tissue Specificity: Expressed in trophoblasts.
	Similarity: Belongs to the MHC class I family. Contains 1 Ig-like C1-type (immunoglobulin-like)
	SWISS: P17693
	Gene ID: 3135
	Database links: Entrez Gene: 3135 Human Omim: 142871 Human SwissProt: P17693 Human

Unigene: 512152 Human

人类白细胞抗原 G/组织相容性白细胞抗原 G(Human Leukocyte Antigen-G, HLA-G)是一种非典型的白细胞抗原I族组织相溶性抗原。该抗原在正常情况下仅在胎盘的绒毛膜表达。在病理情况下 HLA-G 只在某些癌细胞表达,在正常组织或良性 Tumour 则很少表达.因此,HLA-G 是一个具有高度 Tumour 特异性的 TumourMaker。

近年研究认为 HLA—G 作为免疫耐受分子,在 Tumour 免疫逃逸中可能具有重要作用.

Product
Picture



Sample:

Brain (Rat) Lysate at 30 ug

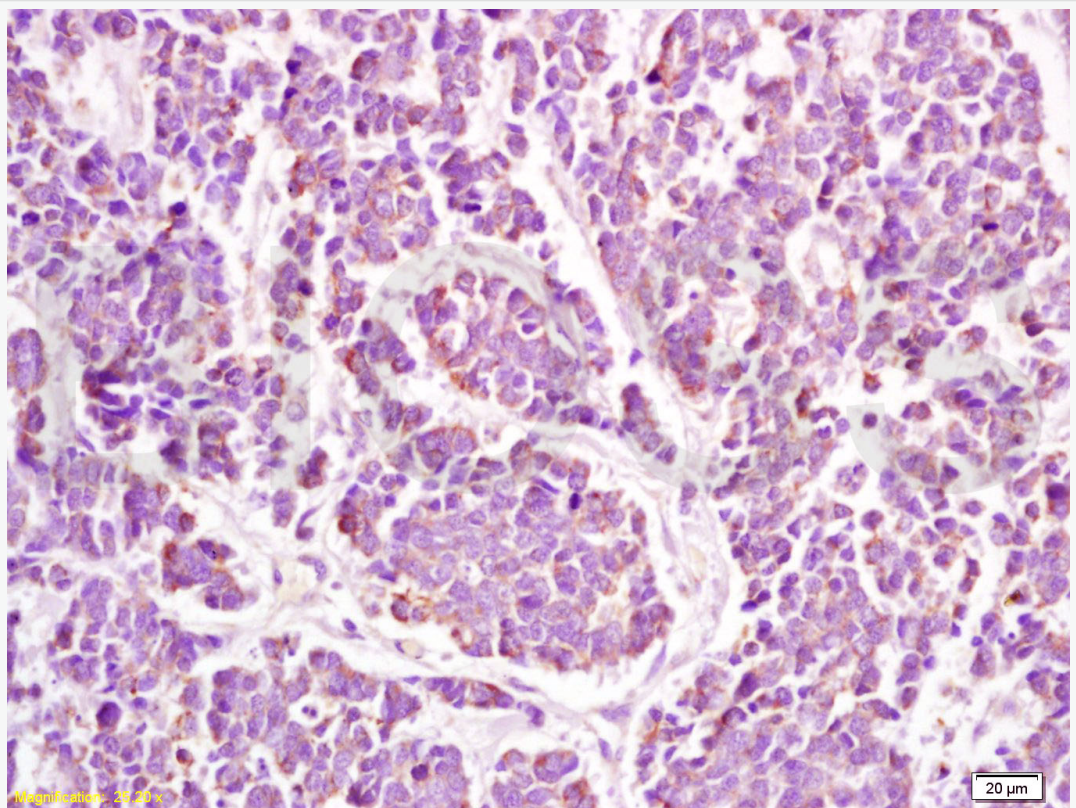
Kidney (Rat) lysate at 30 ug

Primary: Anti- HLA G (SL0752R) at 1/200 dilution

Secondary: HRP conjugated Goat-Anti-rabbit IgG (SL0295G-HRP) at 1/3000 dilution

Predicted band size: 35 kD

Observed band size: 35 kD



Tissue/cell: human lung carcinoma; 4% Paraformaldehyde-fixed and paraffin-embedded;

Antigen retrieval: citrate buffer (1M, pH 6.0), Boiling bathing for 15min; Block endogenous peroxidase by 3% Hydrogen peroxide for 30min; Blocking buffer (normal goat serum,C-0005) at 37°C for 20 min;



SunLong Biotech Co.,LTD

Tel: 0086-571-56623320 Fax:0086-571-56623318

E-mail:sales@sunlongbiotech.com

www.sunlongbiotech.com

Incubation: Anti-HLA B/HLA G Polyclonal Antibody, Unconjugated(SL0752R)
1:200, overnight at 4°C, followed by conjugation to the secondary
antibody(SP-0023) and DAB(C-0010) staining