

Rabbit Anti-KISS1 antibody

SL0749R

Product Name KISS1

Chinese Name Tumour 转移抑制基因抗体

Alias KISS1_HUMAN; Metastasis-suppressor KiSS-1; Kisspeptin-1; Metastin; Kisspeptin-54; Kisspeptin-14; Kisspeptin-13; Kisspeptin-10; PP5098; Kisspeptin;

Research Area Tumour Cell biology Neurobiology Signal transduction

Immunogen Species Rabbit

Clonality Polyclonal

React Species Human,Mouse,Rat (predicted:Cow,Sheep,Pig)

Applications WB=1:500-2000,IHC-P=1:100-500,IHC-F=1:100-500,IF=1:100-500 (Paraffin sections need antigen repair)
not yet tested in other applications.
optimal dilutions/concentrations should be determined by the end user.

Theoretical molecular weight 16kDa

Cellular localization Secretory protein

Form Liquid

Concentration 1mg/ml

immunogen KLH conjugated synthetic peptide derived from human Kiss-1: 81-145/145

Lsotype IgG

Purification affinity purified by Protein A

Buffer Solution 1M TBS(pH7.4) with 1% BSA, 3% Proclin300 and 50% Glycerol.

Storage Shipped at 4°C. Store at -20 °C for one year. Avoid repeated freeze/thaw cycles.

Attention This product as supplied is intended for research use only, not for use in human, therapeutic or diagnostic applications.

PubMed [PubMed](#)

Product This gene is a metastasis suppressor gene that suppresses metastases of melanomas and

Detail

breast carcinomas without affecting tumorigenicity. The encoded protein may inhibit chemotaxis and invasion and thereby attenuate metastasis in malignant melanomas. Studies suggest a putative role in the regulation of events downstream of cell-matrix adhesion, perhaps involving cytoskeletal reorganization. A protein product of this gene, kisspeptin, stimulates gonadotropin-releasing hormone (GnRH)-induced gonadotropin secretion and regulates the pubertal activation of GnRH neurons. A polymorphism in the terminal exon of this mRNA results in two protein isoforms. An adenosine present at the polymorphic site represents the third position in a stop codon. When the adenosine is absent, a downstream stop codon is utilized and the encoded protein extends for an additional seven amino acid residues. [provided by RefSeq, Mar 2012]

Function:

Metastasis suppressor protein in malignant melanomas and in some breast cancers. May regulate events downstream of cell-matrix adhesion, perhaps involving cytoskeletal reorganization. Generates a C-terminally amidated peptide, metastin which functions as the endogenous ligand of the G-protein coupled receptor GPR54. Activation of the receptor inhibits cell proliferation and cell migration, key characteristics of tumor metastasis. Kp-10 is a decapeptide derived from the primary translation product, isolated in conditioned medium of first trimester trophoblast. Kp-10, but not other kisspeptins, increased intracellular Ca(2+) levels in isolated first trimester trophoblasts. Kp-10 is a paracrine/endocrine regulator in fine-tuning trophoblast invasion generated by the trophoblast itself. The receptor is also essential for normal gonadotropin-released hormone physiology and for puberty. The hypothalamic KiSS1/GPR54 system is a pivotal factor in central regulation of the gonadotropic axis at puberty and in adulthood.

Subcellular Location:

Secreted.

Tissue Specificity:

Very high expression in placenta, with the next highest level in testis and moderate levels in pancreas, liver, small intestine and brain at much lower levels. Expression levels increased in both early placentas and molar pregnancies and are reduced in choriocarcinoma cells. Expressed at higher levels in first trimester trophoblasts than at term of gestation, but only expressed in the villous trophoblast.

Post-translational modifications:

Processed by MMP2 and MMP9.

Similarity:

Belongs to the KISS1 family.

SWISS:

Q15726

Gene ID:
3814

Database links:

[Entrez Gene: 3814](#) Human

[Entrez Gene: 289023](#) Rat

[Omim: 603286](#) Human

[SwissProt: Q15726](#) Human

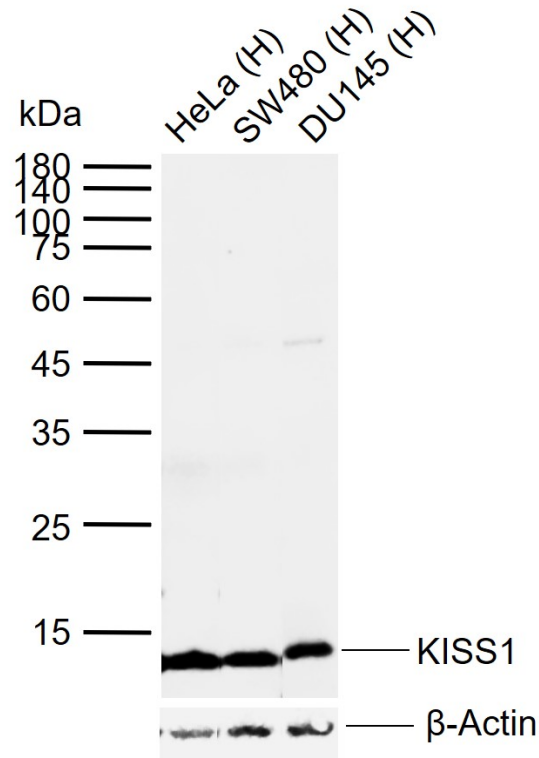
[SwissProt: Q7TSB7](#) Rat

[Unigene: 95008](#) Human

[Unigene: 66008](#) Rat

Kiss-1 主要用于 Tumour 及 Tumour 转移方面的研究。近年来 Kiss-1 与 MMP-9、MMP-2 是 Tumour 转移、浸润研究的热门课题。

**Product
Picture**



Sample:

Lane 1: Human HeLa cell lysates

Lane 2: Human SW480 cell lysates

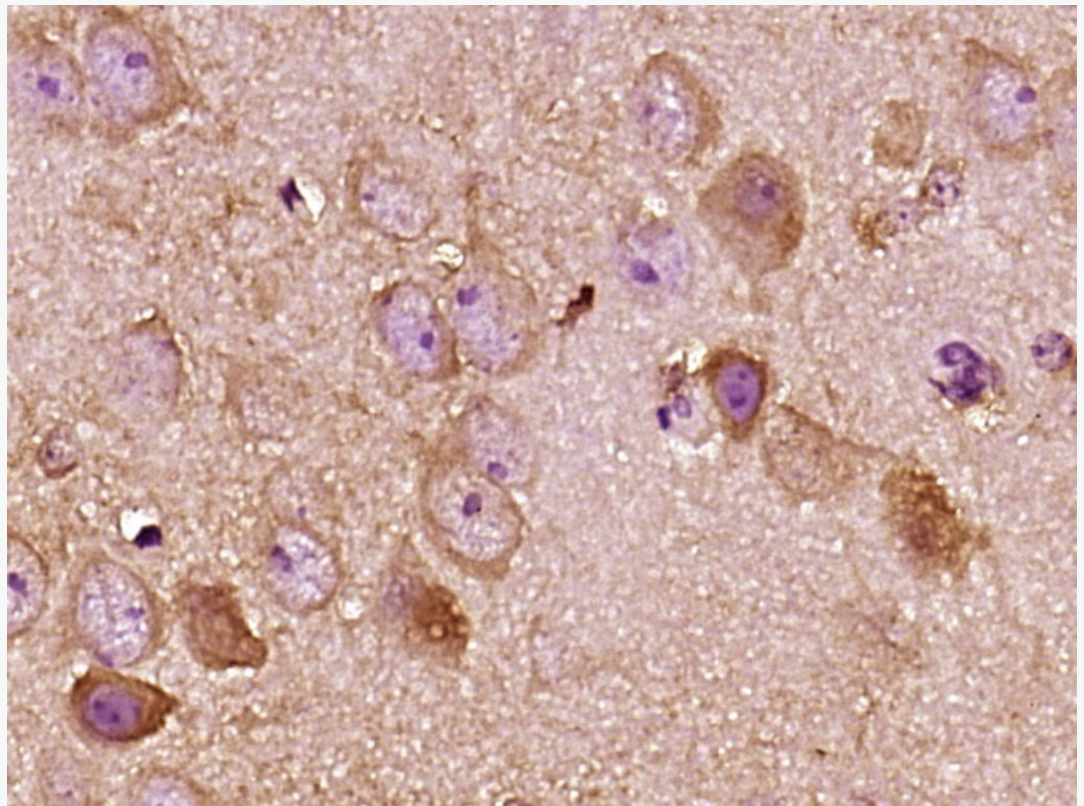
Lane 3: Human DU145 cell lysates

Primary: Anti- KISS1 (SL0749R) at 1/1000 dilution

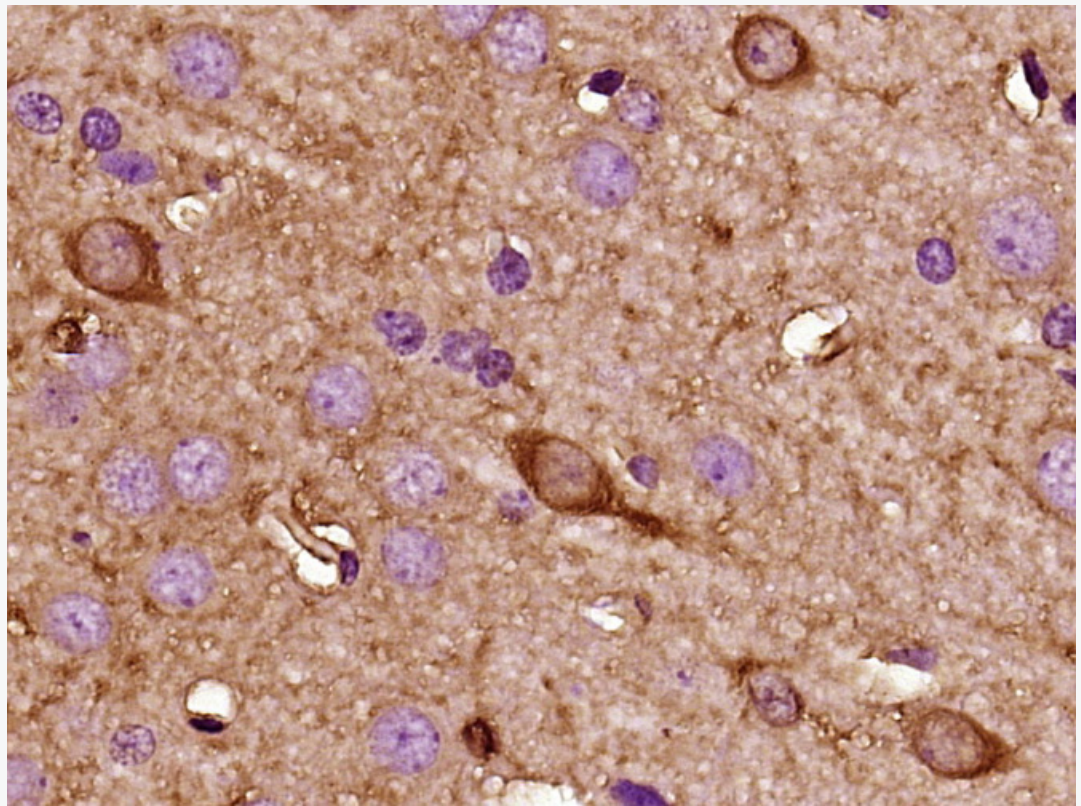
Secondary: IRDye800CW Goat Anti-Rabbit IgG at 1/20000 dilution

Predicted band size: 16 kDa

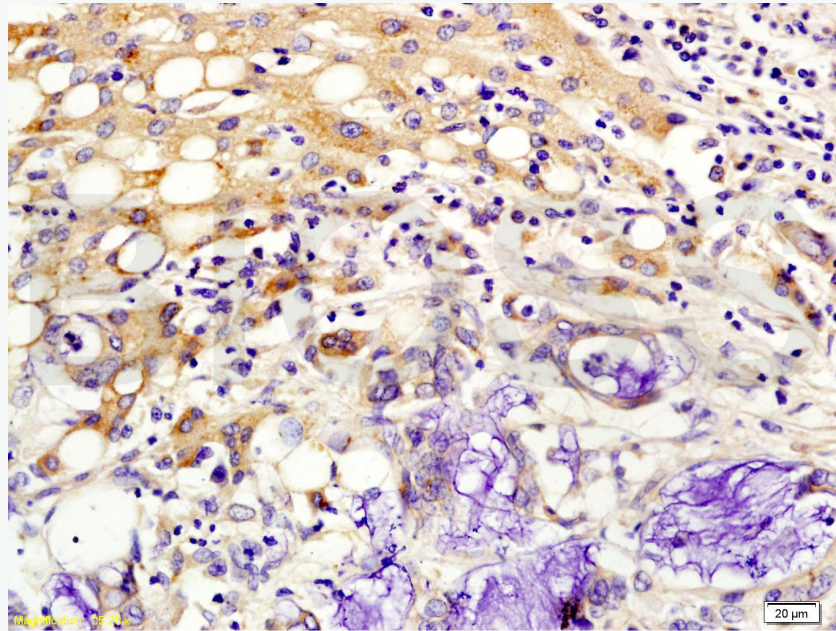
Observed band size: 13 kDa



Paraformaldehyde-fixed, paraffin embedded (Mouse brain); Antigen retrieval by boiling in sodium citrate buffer (pH6.0) for 15min; Block endogenous peroxidase by 3% hydrogen peroxide for 20 minutes; Blocking buffer (normal goat serum) at 37°C for 30min; Antibody incubation with (Kisspeptin) Polyclonal Antibody, Unconjugated (SL0749R) at 1:400 overnight at 4°C, followed by operating according to SP Kit(Rabbit) (sp-0023) instructions and DAB staining.



Paraformaldehyde-fixed, paraffin embedded (Rat brain); Antigen retrieval by boiling in sodium citrate buffer (pH6.0) for 15min; Block endogenous peroxidase by 3% hydrogen peroxide for 20 minutes; Blocking buffer (normal goat serum) at 37°C for 30min; Antibody incubation with (Kisspeptin) Polyclonal Antibody, Unconjugated (SL0749R) at 1:400 overnight at 4°C, followed by operating according to SP Kit(Rabbit) (sp-0023) instructions and DAB staining.



bs-0749R Anti-Kiss 1/Kisspeptin Polyclonal Antibody

Tissue/cell: human colon carcinoma; 4% Paraformaldehyde-fixed and paraffin-embedded
Antigen retrieval: citrate buffer (0.01M, pH 6.0), Boiling bathing for 15min
Block endogenous peroxidase by 3% Hydrogen peroxide for 30min
Blocking buffer (normal goat serum) at 37 °C for 20 min
Incubation: Anti-Kiss-1 Polyclonal Antibody, Unconjugated(bs-0749R) 1:200, overnight at 4 °C,
followed by conjugation to the secondary antibody and DAB staining