

Rabbit Anti-CEAcam8 antibody

SL0744R

Product Name CEAcam8

Chinese Name 癌胚抗原相关 Cell adhesion molecule8 抗体

Alias

Carcinoembryonic Antigen CGM6; Carcinoembryonic antigen gene family member 6; Carcinoembryonic Antigen Related Cell Adhesion Molecule 8; CD 66b; CD 67; CD66b antigen; CD67; CD67 antigen; CEACAM 8; CEACAM8; CGM 6; CGM6; NCA 95; NCA95; Nonspecific cross reacting antigen NCA 95; Non-specific -reacting antigen NCA-95; Nonspecific cross reacting antigen NCA95; CEAM8_HUMAN; Carcinoembryonic antigen-related cell adhesion molecule 8; CD66b.

Research Area

Tumour Cell biology Cell adhesion molecule Cell Surface Molecule

Immunogen Species

Rabbit

Clonality

Polyclonal

React Species

Human,

Applications

IHC-P=1:100-500,IHC-F=1:100-500,IF=1:100-500,Flow-Cyt=1ug/Test (Paraffin sections need antigen repair)
not yet tested in other applications.
optimal dilutions/concentrations should be determined by the end user.

Theoretical molecular weight

38kDa

Cellular localization

The cell membrane

Form

Liquid

Concentration 1mg/ml

immunogen

KLH conjugated synthetic peptide derived from human CEAcam8: 51-150/349

Lsotype

IgG

Purification

affinity purified by Protein A

Buffer Solution

1M TBS(pH7.4) with 1% BSA, 3% Proclin300 and 50% Glycerol.

Storage

Shipped at 4°C. Store at -20 °C for one year. Avoid repeated freeze/thaw cycles.



Attention

This product as supplied is intended for research use only, not for use in human, therapeutic or diagnostic applications.

PubMed

[PubMed](#)

Carcinoembryonic antigen-related cell adhesion molecule 8 (CEACAM8) is a highly glycosylated protein expressed only in neutrophils and eosinophils in humans. The precise function of CEACAM8 remains unclear. As a member of the family of carcinoembryonic antigen (CEA), it may play a role in the interaction between granulocytes or between granulocytes and epithelial cells. Expressed in leukocytes of chronic myeloid Leukemia patients and bone marrow.

Subcellular Location:

Cell membrane; Lipid-anchor, GPI-anchor.

Tissue Specificity:

Expressed in leukocytes of chronic myeloid Leukemia patients and bone marrow.

Similarity:

Belongs to the immunoglobulin superfamily. CEA family.
Contains 2 Ig-like C2-type (immunoglobulin-like) domains.
Contains 1 Ig-like V-type (immunoglobulin-like) domain.

**Product
Detail**

SWISS:

P31997

Gene ID:

1088

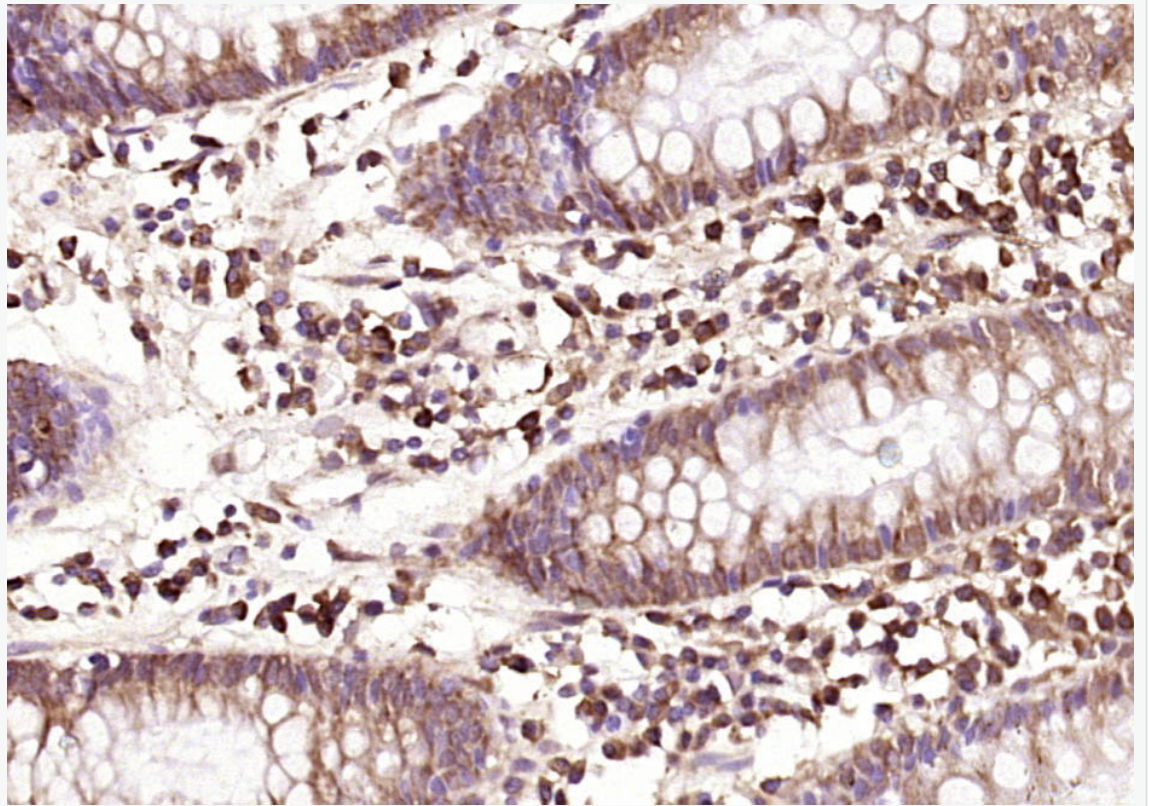
Database links:

[Entrez Gene: 1088](#) Human

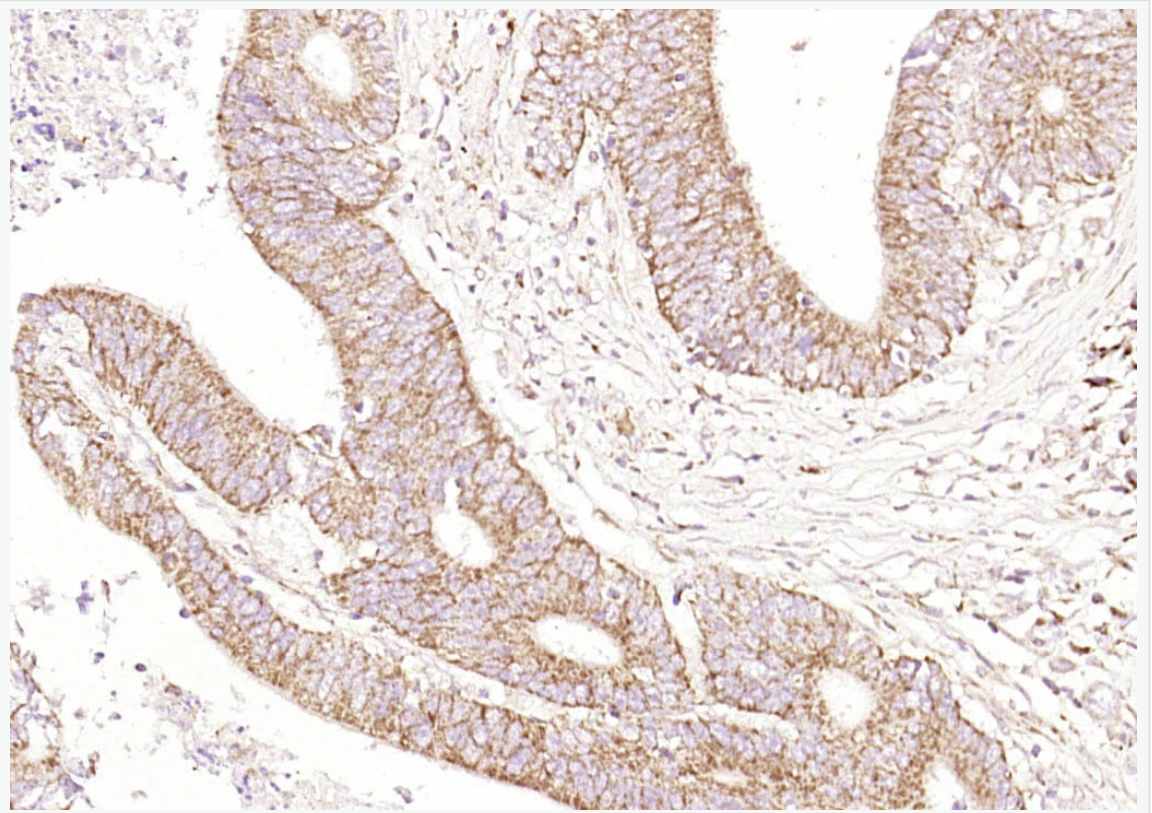
[SwissProt: P31997](#) Human

[Unigene: 41](#) Human

**Product
Picture**



Paraformaldehyde-fixed, paraffin embedded (human rectal carcinoma); Antigen retrieval by boiling in sodium citrate buffer (pH6.0) for 15min; Block endogenous peroxidase by 3% hydrogen peroxide for 20 minutes; Blocking buffer (normal goat serum) at 37°C for 30min; Antibody incubation with (CEAcam8) Polyclonal Antibody, Unconjugated (SL0744R) at 1:400 overnight at 4°C, followed by operating according to SP Kit(Rabbit) (sp-0023) instructions and DAB staining.



Paraformaldehyde-fixed, paraffin embedded (human colon carcinoma); Antigen retrieval by boiling in sodium citrate buffer (pH6.0) for 15min; Block endogenous peroxidase by 3% hydrogen peroxide for 20 minutes; Blocking buffer (normal goat serum) at 37°C for 30min; Antibody incubation with (CEAcam8) Polyclonal Antibody, Unconjugated (SL0744R) at 1:400 overnight at 4°C, followed by operating according to SP Kit(Rabbit) (sp-0023) instructions and DAB staining.