

## Rabbit Anti-CTGF antibody

SL0743R

<b>Product Name</b>	CTGF
<b>Chinese Name</b>	结缔组织生长因子抗体
<b>Alias</b>	CCN 2; CCN-2; CCN2; Connective Tissue Growth Factor; Hcs 24; Hcs24; Hypertrophic chondrocyte specific protein 24; Hypertrophic chondrocyte-specific gene product 24; Insulin-like Growth Factor-Binding Protein 8; MGC102839; NOV 2; NOV2; Connective tissue growth factor; CCN family member 2; Hypertrophic chondrocyte-specific protein 24; Insulin-like growth-binding protein 8; IBP-8; IGF-binding protein 8; IGFBP8; IGFBP-8; connective tissue growth factor precursor; CTGF_HUMAN.
<b>Research Area</b>	Cardiovascular immunology Growth factors and hormones
<b>Immunogen Species</b>	Rabbit
<b>Clonality</b>	Polyclonal
<b>React Species</b>	Mouse,Rat(predicted:Chicken,Dog,Pig,Rabbit,Human) WB=1:500-2000 (Paraffin sections need antigen repair)
<b>Applications</b>	not yet tested in other applications. optimal dilutions/concentrations should be determined by the end user.
<b>Theoretical molecular weight</b>	36kDa
<b>Cellular localization</b>	Extracellular matrix Secretory protein
<b>Form</b>	Liquid
<b>Concentration</b>	1mg/ml
<b>immunogen</b>	KLH conjugated synthetic peptide derived from human CTGF: 221-349/349
<b>Lsotype</b>	IgG
<b>Purification</b>	affinity purified by Protein A
<b>Buffer Solution</b>	Mouse,Rat(predicted:Chicken,Dog,Pig,Rabbit,Human)1M TBS(pH7.4) with 1% BSA, Mouse,Rat(predicted:Chicken,Dog,Pig,Rabbit,Human)3% Proclin300 and 50% Glycerol.
<b>Storage</b>	Shipped at 4°C. Store at -20 °C for one year. Avoid repeated freeze/thaw cycles.

**Attention**

This product as supplied is intended for research use only, not for use in human, therapeutic or diagnostic applications.

**PubMed**

[PubMed](#)

The protein encoded by this gene is a mitogen that is secreted by vascular endothelial cells. The encoded protein plays a role in chondrocyte proliferation and differentiation, cell adhesion in many cell types, and is related to platelet-derived growth factor. Certain polymorphisms in this gene have been linked with a higher incidence of systemic sclerosis. [provided by RefSeq, Nov 2009].

**Function:**

Major connective tissue mitogen secreted by vascular endothelial cells. Promotes proliferation and differentiation of chondrocytes. Mediates heparin- and divalent cation-dependent cell adhesion in many cell types including fibroblasts, myofibroblasts, endothelial and epithelial cells. Enhances fibroblast growth factor-induced DNA synthesis.

**Subunit:**

Monomer.

**Subcellular Location:**

Secreted, extracellular space, extracellular matrix. Secreted.

**Product Detail**

**Tissue Specificity:**

Expressed in bone marrow and thymic cells. Also expressed one of two Wilms tumors tested.

**Similarity:**

Belongs to the CCN family.

Contains 1 CTCK (C-terminal cystine knot-like) domain.

Contains 1 IGFBP N-terminal domain.

Contains 1 TSP type-1 domain.

Contains 1 VWFC domain.

**SWISS:**

P29279

**Gene ID:**

1490

**Database links:**

[Entrez Gene: 1490](#) Human

[Entrez Gene: 64032](#) Rat

[Omim: 121009](#) Human

[SwissProt: P29279](#) Human

[SwissProt: P29268](#) Mouse

[SwissProt: Q9R1E9](#) Rat

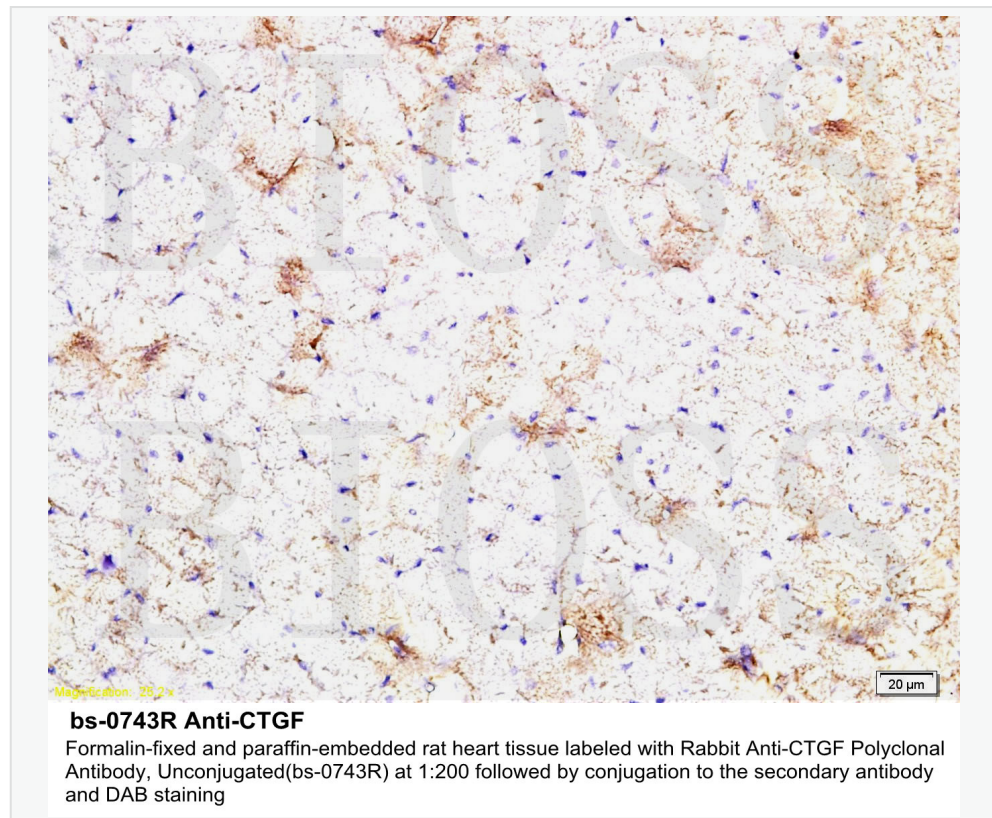
[Unigene: 410037](#) Human

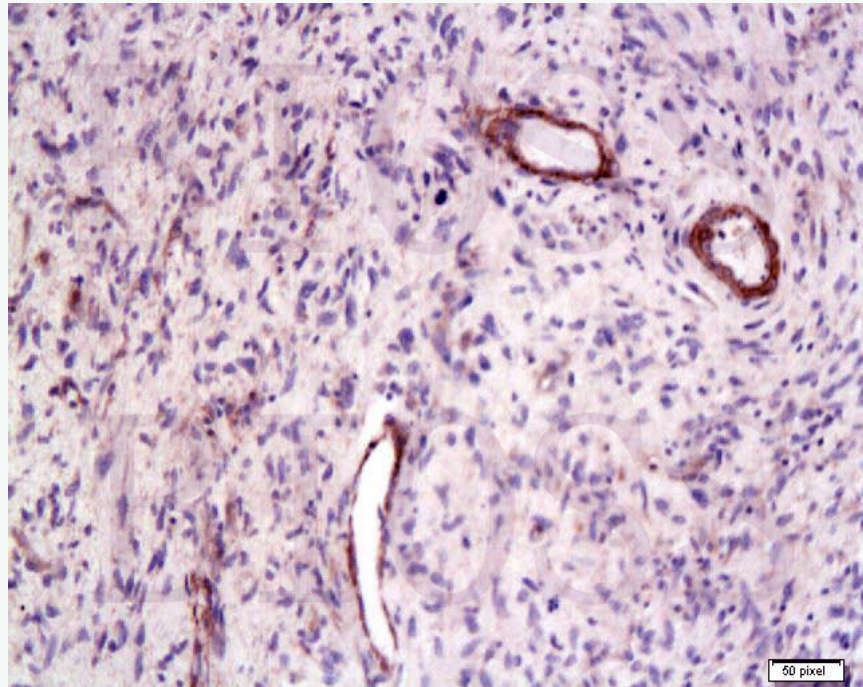
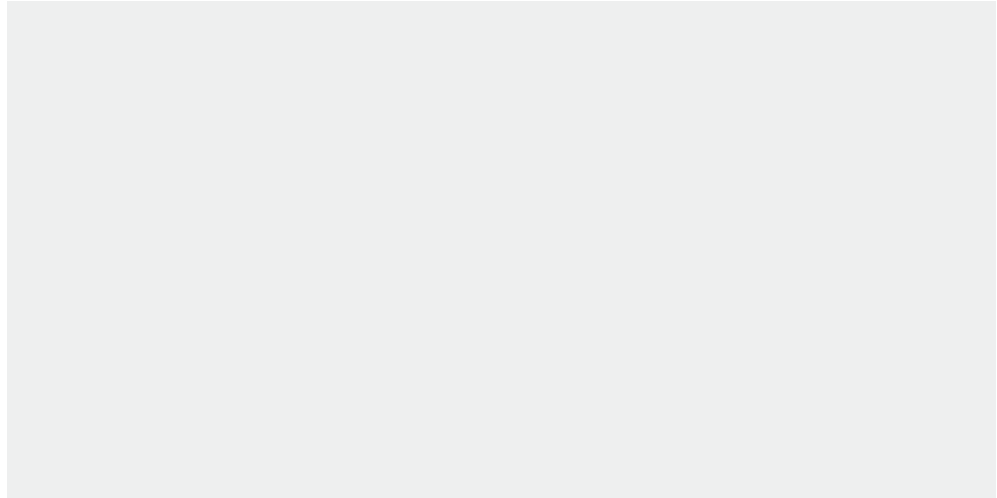
[Unigene: 390287](#) Mouse

### Growth factors and hormones ( Growth Factor and Hormones )

结缔组织生长因子 (CTGF) 是调节细胞增生、分化和 Extracellular matr. 形成的重要效应分子,可调节机体有关组织、细胞生长并与纤维化发生密切相关的一种因子,因而在肌体的各类创伤修复过程中具有重要的生理学意义。

### Product Picture





**bs-0743R Anti-CTGF**

Formalin-fixed and paraffin-embedded human laryngeal cancer labeled with Rabbit Anti-CTGF Polyclonal Antibody, Unconjugated(bs-0743R) at 1:200 followed by conjugation to the secondary antibody and DAB staining



SunLong Biotech Co.,LTD  
Tel: 0086-571-56623320 Fax:0086-571-56623318  
E-mail:sales@sunlongbiotech.com  
www.sunlongbiotech.com

---

