

Rabbit Anti-CD56 antibody

SL0736R

Product Name CD56

Chinese Name 神经 Cell adhesion molecule1 抗体

Alias CD56 antigen; Cell Adhesion Molecule Neural 1; MSK39; N CAM 120; N CAM 140; N CAM 180; NCAM 1; NCAM 120; NCAM 140; NCAM1; Neural cell adhesion molecule 1 120 kDa isoform; Neural cell adhesion molecule 1 140 kDa isoform; Neural cell adhesion molecule 1; NCAM1_HUMAN.

Research Area Cell biology Neurobiology Stem cells Cell type markers

Immunogen Species Rabbit

Clonality Polyclonal

React Species Human, Rat, (predicted: Mouse, Chicken, Dog, Pig, Cow, Horse, Rabbit,)
WB=1:500-2000,IHC-P=1:100-500,IHC-F=1:100-500,IF=1:100-500 (Paraffin sections need antigen repair)

Applications not yet tested in other applications.
optimal dilutions/concentrations should be determined by the end user.

Theoretical molecular weight 92kDa

Cellular localization The cell membrane Secretory protein

Form Liquid

Concentration 1mg/ml

immunogen KLH conjugated synthetic peptide derived from human CD56/NCAM1: 701-800/858

Lsotype IgG

Purification affinity purified by Protein A

Buffer Solution 1M TBS(pH7.4) with 1% BSA, 3% Proclin300 and 50% Glycerol.

Storage Shipped at 4°C. Store at -20 °C for one year. Avoid repeated freeze/thaw cycles.

Attention This product as supplied is intended for research use only, not for use in human, therapeutic or diagnostic applications.

PubMed

[PubMed](#)

This gene encodes a cell adhesion protein which is a member of the immunoglobulin superfamily. The encoded protein is involved in cell-to-cell interactions as well as cell-matrix interactions during development and differentiation. The encoded protein has been shown to be involved in development of the nervous system, and for cells involved in the expansion of T cells and dendritic cells which play an important role in immune surveillance. Alternative splicing results in multiple transcript variants. [provided by RefSeq, Jun 2011]

Function:

This protein is a cell adhesion molecule involved in neuron-neuron adhesion, neurite fasciculation, outgrowth of neurites, etc.

Subcellular Location:

Isoform 1, 2,: Cell membrane; Single-pass type I membrane protein. Isoform 3, 4: Cell membrane; Lipid-anchor, GPI-anchor. Isoform 5, 6: Secreted.

Similarity:

Contains 2 fibronectin type-III domains.

Contains 5 Ig-like C2-type (immunoglobulin-like) domains.

Product Detail

SWISS:

P13591

Gene ID:

4684

Database links:

[Entrez Gene: 4684](#) Human

[Entrez Gene: 17967](#) Mouse

[Entrez Gene: 24586](#) Rat

[Omim: 116930](#) Human

[SwissProt: P13591](#) Human

[SwissProt: P13595](#) Mouse

[SwissProt: P13596](#) Rat

[Unigene: 503878](#) Human

[Unigene: 711235](#) Human

[Unigene: 733031](#) Human

[Unigene: 439182](#) Mouse

[Unigene: 4974](#) Mouse

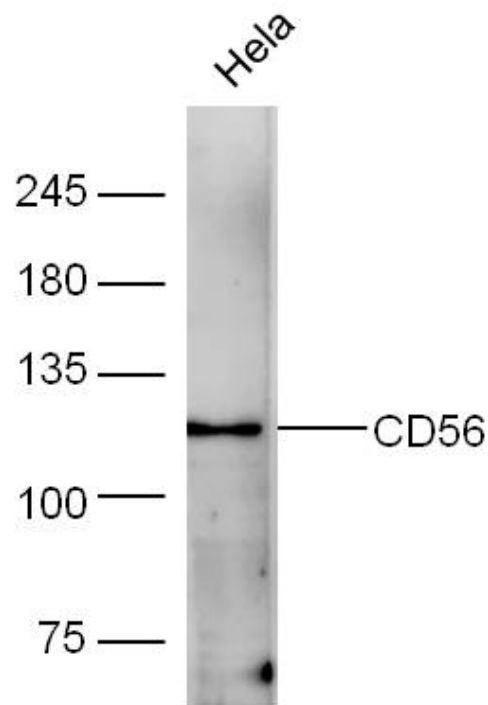
[Unigene: 11283](#) Rat

细胞粘附蛋白（Cell Adhesion Protein）
神经元 Maker

NCAM-1 为神经 Cell adhesion molecule, 主要分布于神经组织, 神经—肌肉接头, 神经—内分泌腺和某些内分泌腺以及大多数神经外胚层来源的细胞、组织和 Tumour 中。

NCAM 1 主要用于视网膜母细胞瘤、髓母细胞瘤、星形细胞瘤、神经母细胞瘤等 Tumour 方面的研究。CD56（神经细胞黏附分子, NCAM）表达于大部分神经外胚层来源的细胞系、组织和 Tumour 如视网膜母细胞瘤、成神经管细胞瘤、星形细胞瘤以及成神经细胞瘤。它也表达于一些中胚层来源的 Tumour 如横纹肌肉瘤。NK 细胞以及 NK 细胞淋巴瘤为阳性。CD56 被认为是 NK 细胞 Tumour 的重要 Maker。该抗体识别分子量为 180, 145 和 125kDa 亚型。

**Product
Picture**



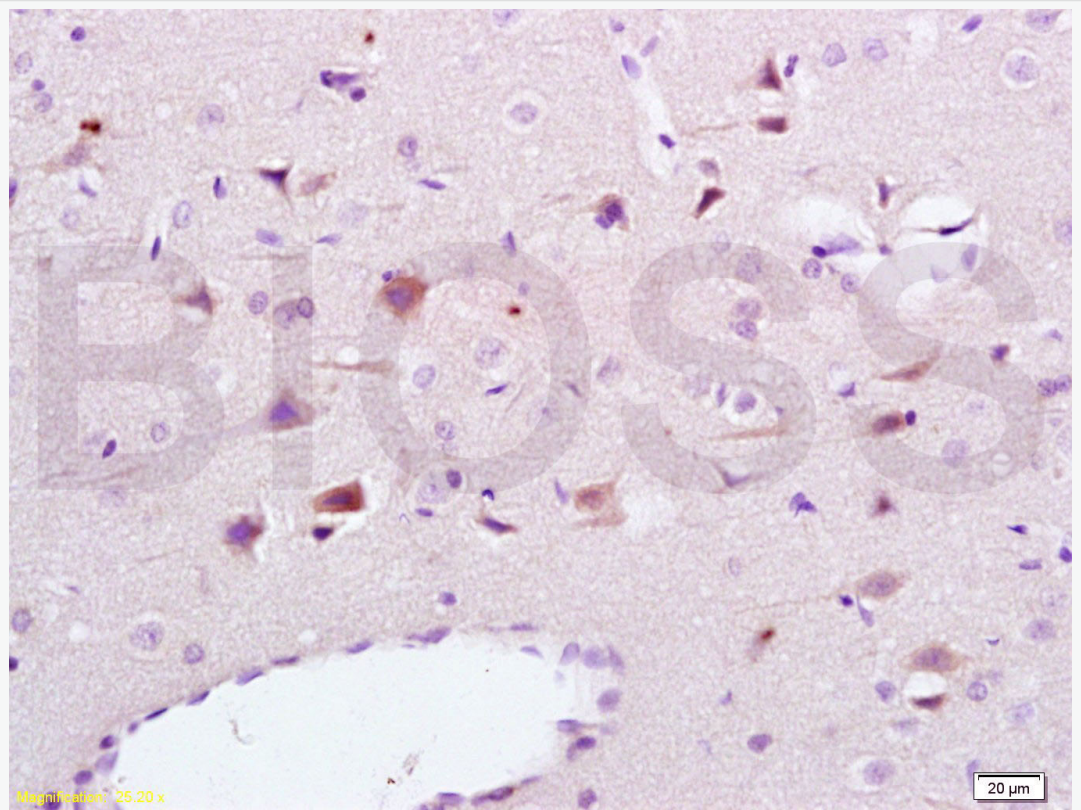
Protein: HeLa(human)cell lysates at 40ug;

Primary: rabbit Anti-CD56 (SL0736R) at 1:300;

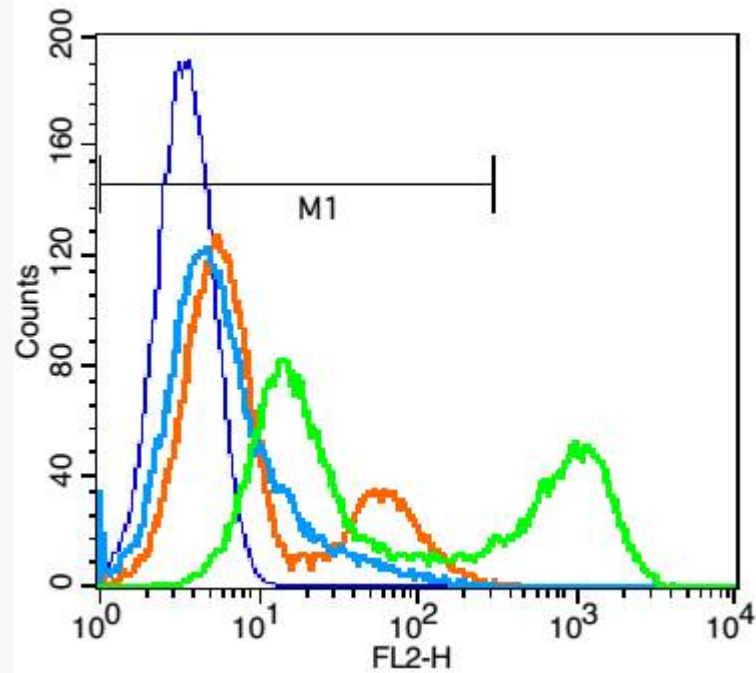
Secondary: HRP conjugated Goat-Anti-rabbit IgG(SL0295G-HRP) at 1: 5000;

Predicted band size:92 kD

Observed band size:125 kD



Tissue/cell: rat brain tissue; 4% Paraformaldehyde-fixed and paraffin-embedded;
Antigen retrieval: citrate buffer (1M, pH 6.0), Boiling bathing for 15min; Block
endogenous peroxidase by 3% Hydrogen peroxide for 30min; Blocking buffer
(normal goat serum,C-0005) at 37°C for 20 min;
Incubation: Anti-NCAM1 Polyclonal Antibody, Unconjugated(SL0736R) 1:200,
overnight at 4°C, followed by conjugation to the secondary antibody(SP-0023)
and DAB(C-0010) staining



Blank control:Jurkat cells(blue).

Primary Antibody:Rabbit Anti- CD56 antibody(SL0736R), Dilution: 1 μ g in 100 μ L 1X PBS containing 0.5% BSA;

Isotype Control Antibody: Rabbit IgG(orange),used under the same conditions);

Secondary Antibody: Goat anti-rabbit IgG-PE(white blue), Dilution: 1:200 in 1 X PBS containing 0.5% BSA.

Protocol

The cells were fixed with 2% paraformaldehyde (10 min) . Primary antibody (SL0736R,1 μ g /1x10⁶ cells) were incubated for 30 min on the ice, followed by 1 X PBS containing 0.5% BSA + 10% goat serum (15 min) to block non-specific protein-protein interactions. Then the Goat Anti-rabbit IgG/PE antibody was



added into the blocking buffer mentioned above to react with the primary antibody at 1/200 dilution for 30 min on ice. Acquisition of 20,000 events was performed.