

## Rabbit Anti-Spindlin 1 antibody

SL0724R

**Product Name** Spindlin 1

**Chinese Name** 卵巢癌相关蛋白抗体

**Alias** Spindlin-like protein 2; SPIN-2; DXF34; OCR; Ovarian cancer-related protein; SPIN; Spin1; SPIN1\_HUMAN; Spindlin-1.

**Research Area** Tumour Cell biology Developmental biology Signal transduction Cyclin Cell differentiation TumourCell biologyMaker Epigenetics

**Immunogen Species** Rabbit

**Clonality** Polyclonal

**React Species** Human, (predicted: Mouse, Rat, )

**Applications** IHC-P=1:100-500,IHC-F=1:100-500,IF=1:100-500 (Paraffin sections need antigen repair)  
not yet tested in other applications.  
optimal dilutions/concentrations should be determined by the end user.

**Theoretical molecular weight** 29kDa

**Cellular localization** The nucleus

**Form** Liquid

**Concentration** 1mg/ml

**immunogen** KLH conjugated synthetic peptide derived from human Spindin 1: 3-100/237

**Lsotype** IgG

**Purification** affinity purified by Protein A

**Buffer Solution** 1M TBS(pH7.4) with 1% BSA, 3% Proclin300 and 50% Glycerol.

**Storage** Shipped at 4°C. Store at -20 °C for one year. Avoid repeated freeze/thaw cycles.

**Attention** This product as supplied is intended for research use only, not for use in human, therapeutic or diagnostic applications.

**PubMed** [PubMed](#)

**Product** Spindlin 1 (Spindlin-like protein 2; SPIN-2 ) protein May play a role in cell-cycle

---

**Detail**

regulation during the transition from gamete to embryo. Subcellular location in the Nucleus. Belongs to the SPIN/STSY family.

**Function:**

May play a role in cell-cycle regulation during the transition from gamete to embryo (By similarity).

**Subunit:**

Homodimer; may form higher-order oligomers.

**Subcellular Location:**

Nucleus.

**Post-translational modifications:**

Phosphorylated during oocyte meiotic maturation.

**Similarity:**

Belongs to the SPIN/STSY family.

**SWISS:**

Q9Y657

**Gene ID:**

10927

**Database links:**

[Entrez Gene: 10927](#) Human

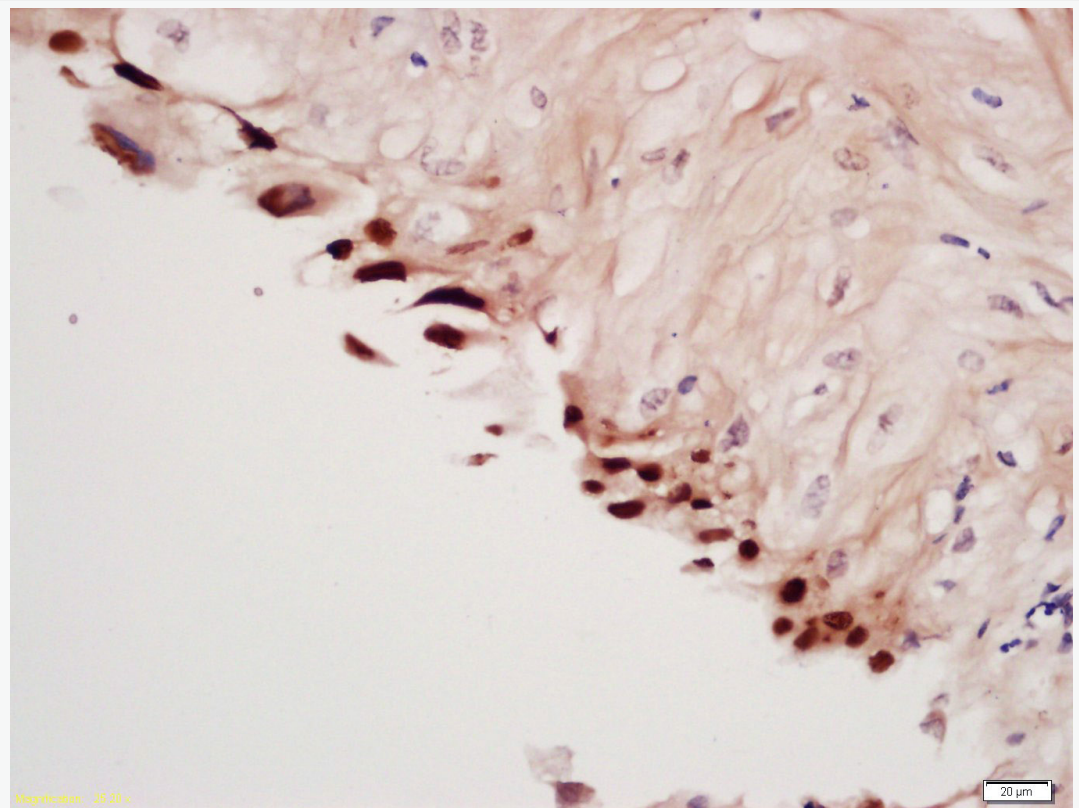
[Omim: 609936](#) Human

[SwissProt: Q9Y657](#) Human

[Unigene: 146804](#) Human

spindlin1 又称: DXF34 经研究发现,可能是一种与 Tumour 形成相关的原癌基因.

**Product  
Picture**



Tissue/cell: Human Cervical Cancer tissue; 4% Paraformaldehyde-fixed and paraffin-embedded;

Antigen retrieval: citrate buffer ( 1M, pH 6.0 ), Boiling bathing for 15min; Block endogenous peroxidase by 3% Hydrogen peroxide for 30min; Blocking buffer (normal goat serum,C-0005) at 37°C for 20 min;

Incubation: Anti-Spindlin 1 Polyclonal Antibody, Unconjugated(SL0724R) 1:200, overnight at 4°C, followed by conjugation to the secondary antibody(SP-0023) and DAB(C-0010) staining