

## Rabbit Anti-Ceramide glucosyltransferase antibody

SL0701R

<b>Product Name</b>	Ceramide glucosyltransferase
<b>Chinese Name</b>	谷氨酸半胱氨酸 $\gamma$ 合成酶抗体
<b>Alias</b>	CEGT_HUMAN; UGCG; GCS; GLCT 1; GLCT-1; GLCT1; Glucosylceramide synthase; UDP glucose ceramide glucosyltransferase; UDP glucose N acylsphingosine D glucosyltransferase; UDP-glucose ceramide glucosyltransferase; UDP-glucose:N-acylsphingosine D-glucosyltransferase; Ugcg.
<b>Research Area</b>	Tumour Cell biology immunology Signal transduction Kinases and Phosphatases
<b>Immunogen Species</b>	Rabbit
<b>Clonality</b>	Polyclonal
<b>React Species</b>	Human, Mouse, (predicted: Rat, Cow, ) IHC-P=1:100-500,IHC-F=1:100-500,IF=1:100-500,Flow-Cyt=1 $\mu$ g/Test (Paraffin sections need antigen repair)
<b>Applications</b>	not yet tested in other applications. optimal dilutions/concentrations should be determined by the end user.
<b>Theoretical molecular weight</b>	44kDa
<b>Cellular localization</b>	cytoplasmic The cell membrane
<b>Form</b>	Liquid
<b>Concentration</b>	1mg/ml
<b>immunogen</b>	KLH conjugated synthetic peptide derived from human UGCG: 21-120/394
<b>Lsotype</b>	IgG
<b>Purification</b>	affinity purified by Protein A
<b>Buffer Solution</b>	1M TBS(pH7.4) with 1% BSA, 3% Proclin300 and 50% Glycerol.
<b>Storage</b>	Shipped at 4°C. Store at -20 °C for one year. Avoid repeated freeze/thaw cycles.
<b>Attention</b>	This product as supplied is intended for research use only, not for use in human, therapeutic

or diagnostic applications.

**PubMed**

[PubMed](#)

GCS (glucosylceramide synthase ) may serve as a 'flippase' as well as a glucosyltransferase that transfers glucose to ceramide. Able to use UDP-galactose to synthesize galactosylceramide with 10% of efficiency with which it utilizes UDP-glucose. [Catalytic activity] UDP-glucose + N-acylsphingosine = UDP + D-glucosyl-N-acylsphingosine. Lipid metabolism; sphingolipid metabolism. [Subcellular location] Endoplasmic reticulum membrane; Multi-pass membrane protein. Belongs to the glycosyltransferase 2 family.

**Function:**

Catalyzes the first glycosylation step in glycosphingolipid biosynthesis, the transfer of glucose to ceramide.

**Subcellular Location:**

Golgi apparatus membrane.

**Tissue Specificity:**

Found in all tissues examined.

**Similarity:**

Belongs to the glycosyltransferase 2 family.

**Product  
Detail**

**SWISS:**

Q16739

**Gene ID:**

7357

**Database links:**

[Entrez Gene: 7357](#) Human

[Entrez Gene: 22234](#) Mouse

[Entrez Gene: 83626](#) Rat

[Omim: 602874](#) Human

[SwissProt: Q16739](#) Human

[SwissProt: O88693](#) Mouse

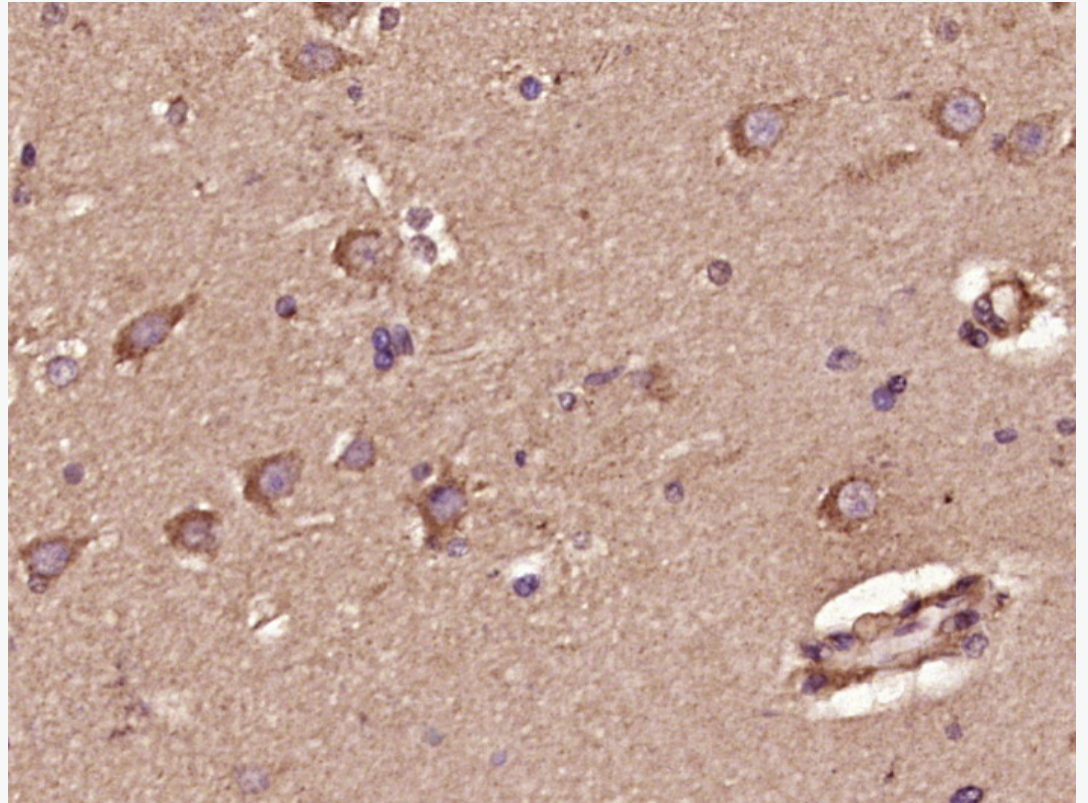
[SwissProt: Q9R0E0](#) Rat

[Unigene: 304249](#) Human

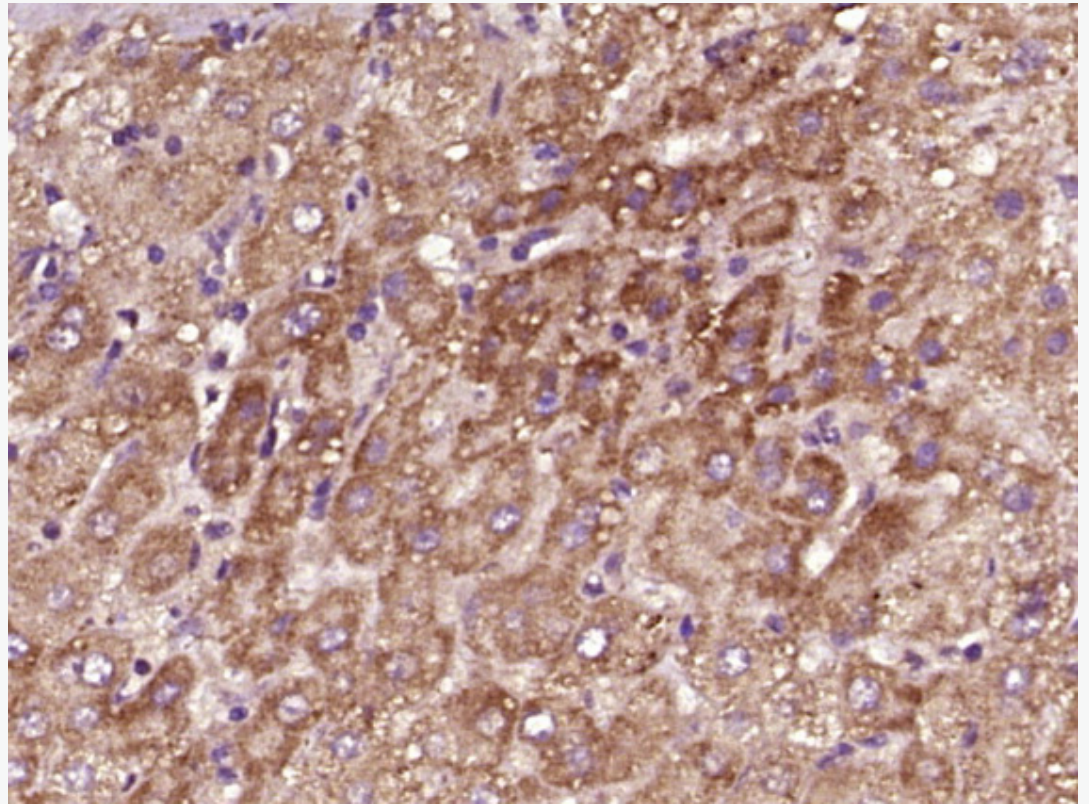
谷氨酸半胱氨酸  $\gamma$  合成酶又称葡萄糖神经酰胺合成酶(glucosylceramide synthase, GCS)是调控神经酰胺代谢的关键酶之一, 其活性水平与 Tumour 细胞多药耐药有密切关系.

有研究报道 GCS 在人卵巢癌细胞、口腔表皮癌细胞、黑色素瘤细胞、乳腺癌细胞及胆囊癌、胃癌中均有表达.

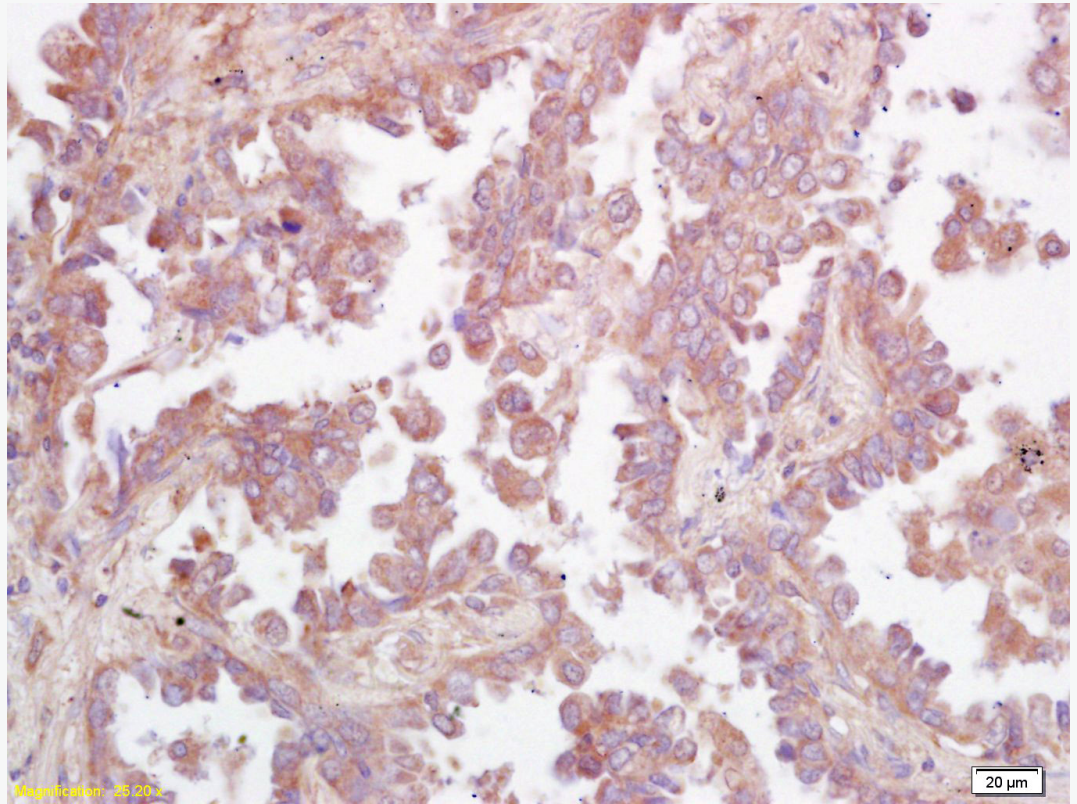
**Product  
Picture**



Paraformaldehyde-fixed, paraffin embedded (Human glioma); Antigen retrieval by boiling in sodium citrate buffer (pH6.0) for 15min; Block endogenous peroxidase by 3% hydrogen peroxide for 20 minutes; Blocking buffer (normal goat serum) at 37°C for 30min; Antibody incubation with (Ceramide glucosyltransferase) Polyclonal Antibody, Unconjugated (SL0701R) at 1:400 overnight at 4°C, followed by operating according to SP Kit(Rabbit) (sp-0023) instructions and DAB staining.



Paraformaldehyde-fixed, paraffin embedded (Human liver cancer); Antigen retrieval by boiling in sodium citrate buffer (pH6.0) for 15min; Block endogenous peroxidase by 3% hydrogen peroxide for 20 minutes; Blocking buffer (normal goat serum) at 37°C for 30min; Antibody incubation with (Ceramide glucosyltransferase) Polyclonal Antibody, Unconjugated (SL0701R) at 1:400 overnight at 4°C, followed by operating according to SP Kit(Rabbit) (sp-0023) instructions and DAB staining.

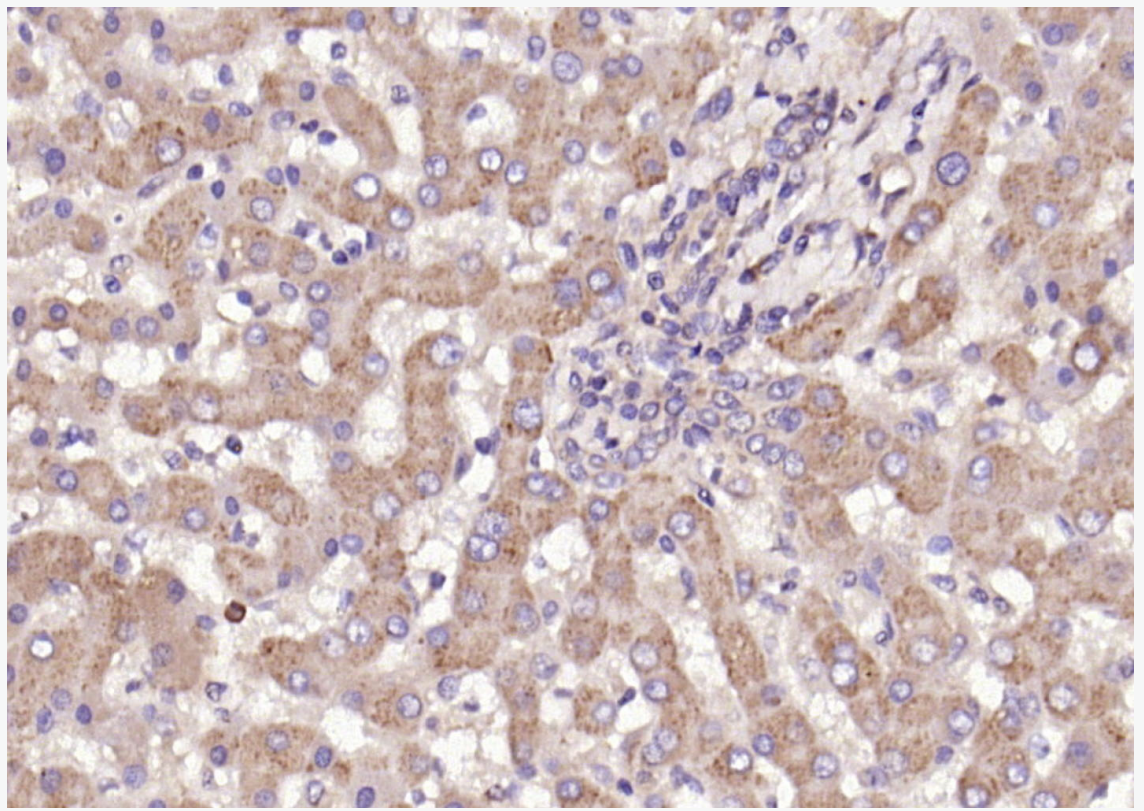


Tissue/cell: human lung carcinoma; 4% Paraformaldehyde-fixed and paraffin-embedded;

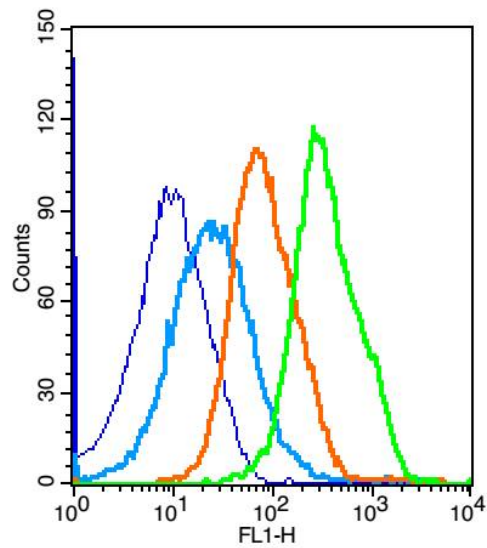
Antigen retrieval: citrate buffer ( 1M, pH 6.0 ), Boiling bathing for 15min; Block endogenous peroxidase by 3% Hydrogen peroxide for 30min; Blocking buffer (normal goat serum,C-0005) at 37°C for 20 min;

Incubation: Anti-GCS/glycosylceramide synthase Polyclonal Antibody,

Unconjugated(SL0701R) 1:200, overnight at 4°C, followed by conjugation to the secondary antibody(SP-0023) and DAB(C-0010) staining



Paraformaldehyde-fixed, paraffin embedded (Human liver ); Antigen retrieval by boiling in sodium citrate buffer (pH6.0) for 15min; Block endogenous peroxidase by 3% hydrogen peroxide for 20 minutes; Blocking buffer (normal goat serum) at 37°C for 30min; Antibody incubation with (Ceramide glucosyltransferase) Polyclonal Antibody, Unconjugated (SL0701R) at 1:200 overnight at 4°C, followed by operating according to SP Kit(Rabbit) (sp-0023) instructions and DAB staining.



Key	Name	Parameter	Gate
—	(mo)Splenocyte-blank.036	FL1-H	G1
—	bs-0295G-FITC-(mo)Sp#1E5870.037	FL1-H	G1
—	bs-0295P-(FITC)-(mo)#1E5874.038	FL1-H	G1
—	bs-0701R-(FITC)-(mo)#1E5879.043	FL1-H	G1

Blank control: mouse splenocytes(blue)

Isotype Control Antibody: Rabbit IgG(orange) ; Secondary Antibody: Goat anti-rabbit IgG-FITC(white blue), Dilution: 1:100 in 1 X PBS containing 0.5% BSA ; Primary Antibody Dilution: 1µl in 100 µL1X PBS containing 0.5% BSA(green).