

Rabbit Anti-CD147 antibody

SL0684R

Product Name CD147

Chinese Name Extracellular matrix 金属蛋白酶诱导因子抗体

Alias TCSF; Emmprin; 5A11 antigen; 5F7; Basigin (Ok blood group); Basigin; Blood brain barrier HT CD 147; CD147 antigen; Collagenase stimulatory factor; Extracellular matrix metalloproteinase Leukocyte activation antigen M6; M6; M6 leukocyte activation antigen; neurothelin; OK; OK blood group antigen; TCSF; Tumor cell derived collagenase stimulatory factor; BASI_HUMAN

Research Area Tumour immunology Synthesis and Degradation Cell Surface Molecule

Immunogen Species Rabbit

Clonality Polyclonal

React Species Human,Mouse,Rat (predicted:Chicken,Dog,Pig,Cow,Rabbit,GuineaPig)
WB=1:500-2000,IHC-P=1:100-500,IHC-F=1:100-500,IF=1:100-500 (Paraffin sections need a

Applications not yet tested in other applications.
optimal dilutions/concentrations should be determined by the end user.

Theoretical molecular weight 40kDa

Detection molecular weight 55-65 kDa

Cellular localization The cell membrane

Form Liquid

Concentration 1mg/ml

immunogen KLH conjugated synthetic peptide derived from human TCSF: 301-385/385 <Cytoplasmic>

Lsotype IgG

Purification affinity purified by Protein A

Buffer Solution 1M TBS(pH7.4) with 1% BSA, 3% Proclin300 and 50% Glycerol.

Storage Shipped at 4°C. Store at -20 °C for one year. Avoid repeated freeze/thaw cycles.



Attention

This product as supplied is intended for research use only, not for use in human, therapeutic or diagnostic applications.

PubMed

[PubMed](#)

The protein encoded by this gene is a plasma membrane protein that is important in spermatogenesis, embryo implantation, neural network formation, and tumor progression. The encoded protein is also a member of the immunoglobulin superfamily. Multiple transcript variants encoding different isoforms have been identified for this gene. [provided by RefSeq, Jul 2008]

Function:

Plays pivotal roles in spermatogenesis, embryo implantation, neural network formation and tumor progression. Stimulates adjacent fibroblasts to produce matrix metalloproteinases (MMPs). May target monocarboxylate transporters SLC16A1, SLC16A3 and SLC16A8 to plasma membranes of retinal pigment epithelial cells in the retina. Seems to be a receptor for oligomannosidic glycans. In vitro, promotes outgrowth of astrocytes.

Subunit:

Forms homooligomers in a cis-dependent manner on the plasma membrane. Forms heterooligomers with isoform 3. Forms a complex with MMP1 at the tumor cell surface. Interacts with SLC16A1. Probably a BSG dimer is associated with a monocarboxylate transporter dimer. Interacts with ATL1 and L1CAM. Interacts with AJAP1.

Subcellular Location:

Cell membrane; Single-pass type I membrane protein. Melanosome.

Product Detail

Tissue Specificity:

Present only in vascular endothelium in non-neoplastic regions of the brain, whereas it is present in proliferating blood vessels in malignant gliomas.

Post-translational modifications:

N-glycosylated.

Similarity:

Contains 1 Ig-like C2-type (immunoglobulin-like) domain.
Contains 1 Ig-like V-type (immunoglobulin-like) domain.

SWISS:

P35613

Gene ID:

682

Database links:

[Entrez Gene: 682](#) Human

[Entrez Gene: 12215](#) Mouse

[Entrez Gene: 25246](#) Rat

[Omim: 109480](#) Human

[SwissProt: P35613](#) Human

[SwissProt: P18572](#) Mouse

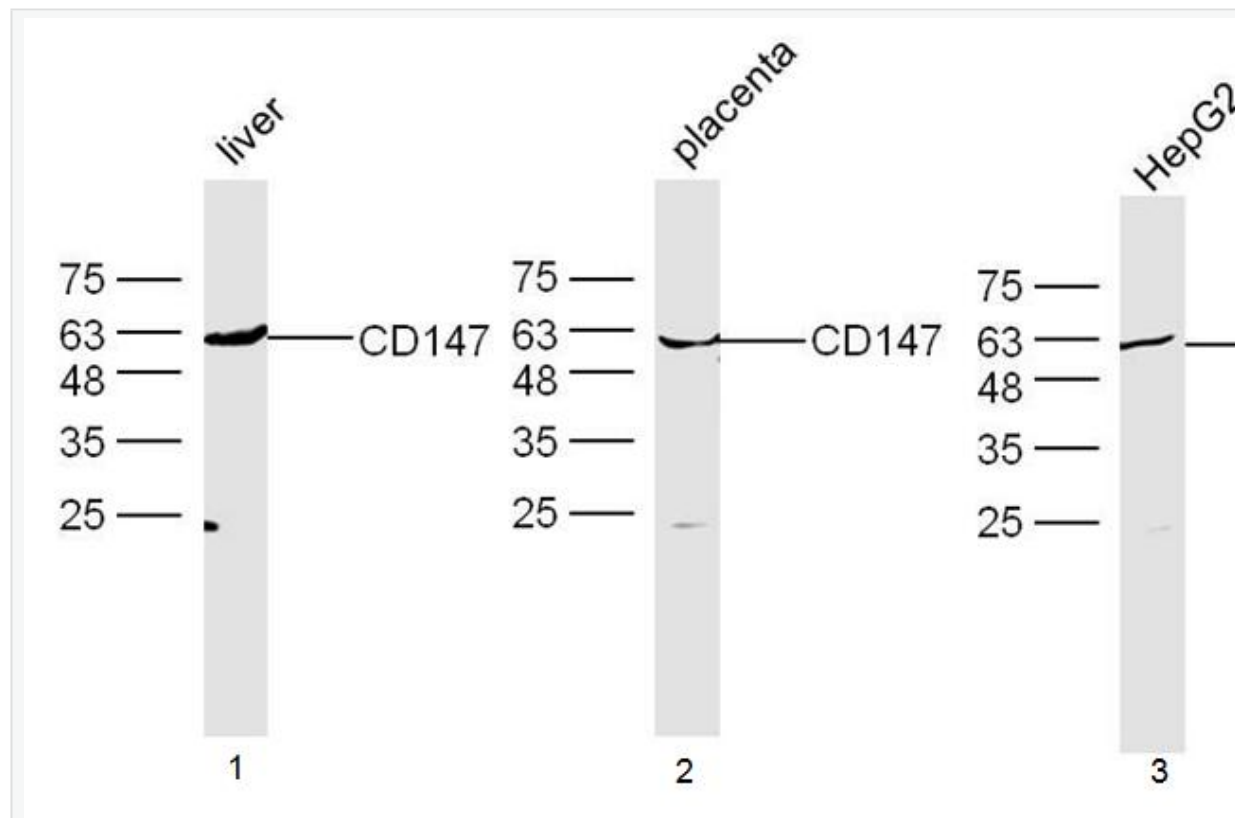
[SwissProt: P26453](#) Rat

[Unigene: 501293](#) Human

Synthesis and Degradation (Synthesis and Degradation)

主要由 Tumour 细胞合成, 刺激纤维母细胞产生 MMP

Product
Picture



Sample:

Liver(Mouse) Lysate at 40 ug

Placenta(Mouse) Lysate at 40 ug

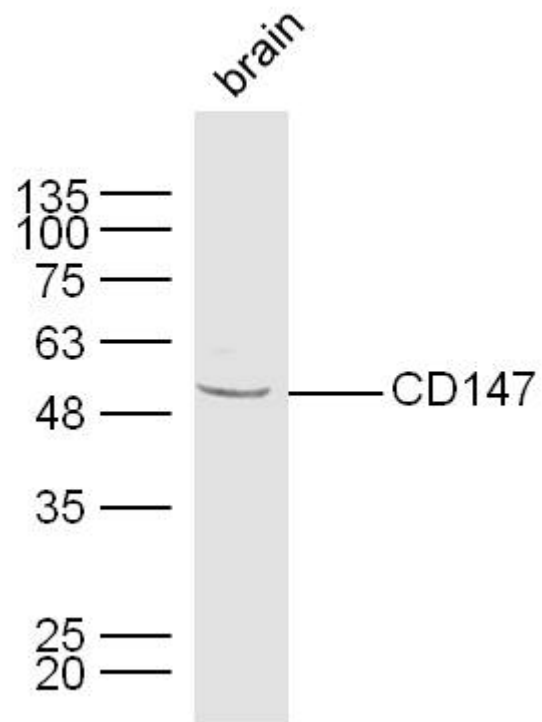
HepG2 Cell Lysate at 40 ug

Primary: Anti-CD147 (SL0684R) at 1/300 dilution

Secondary: IRDye800CW Goat Anti-Rabbit IgG at 1/20000 dilution

Predicted band size: 40 kD

Observed band size: 60 kD



Sample:

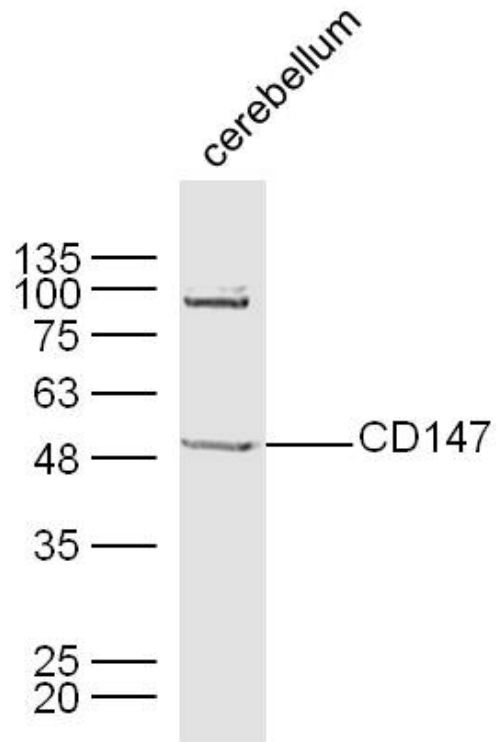
Brain (Mouse) Lysate at 40 ug

Primary: Anti-CD147 (Bs-0684R) at 1/300 dilution

Secondary: IRDye800CW Goat Anti-Rabbit IgG at 1/20000 dilution

Predicted band size: 40 kD

Observed band size: 50 kD



Sample:

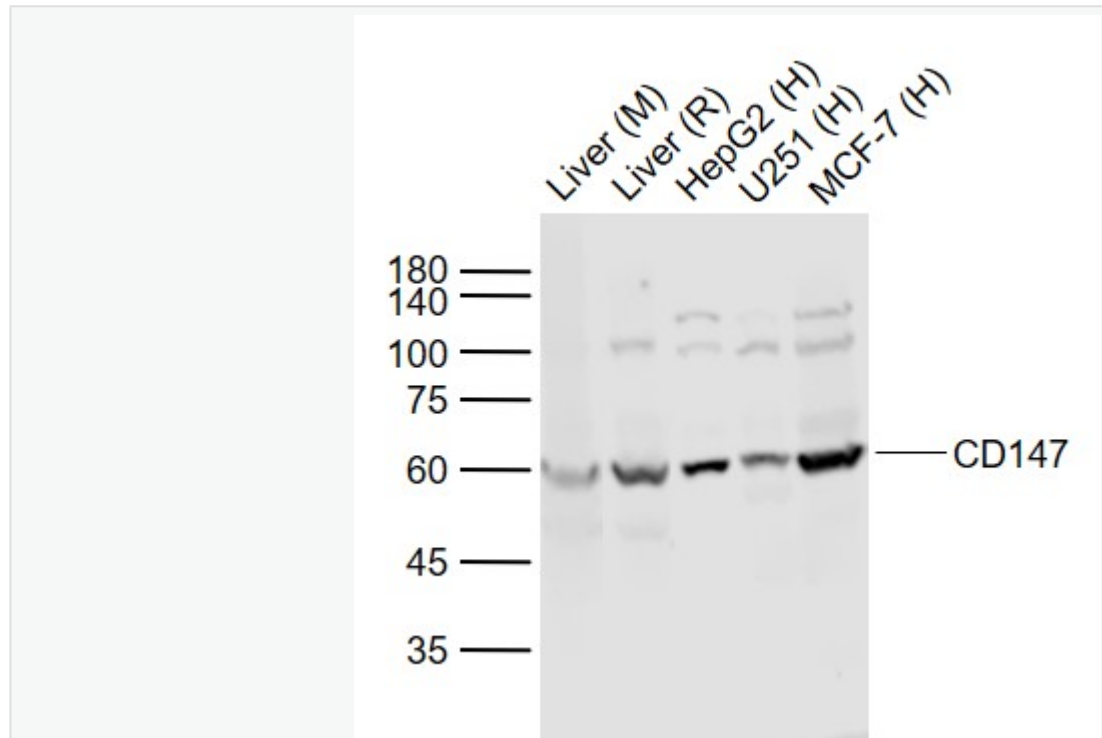
Cerebellum (Mouse) Lysate at 40 ug

Primary: Anti-CD147 (Bs-0684R) at 1/300 dilution

Secondary: IRDye800CW Goat Anti-Rabbit IgG at 1/20000 dilution

Predicted band size: 40 kD

Observed band size: 50 kD



Sample:

Lane 1: Liver (Mouse) Lysate at 40 ug

Lane 2: Liver (Rat) Lysate at 40 ug

Lane 3: HepG2 (Human) Cell Lysate at 30 ug

Lane 4: U251 (Human) Cell Lysate at 30 ug

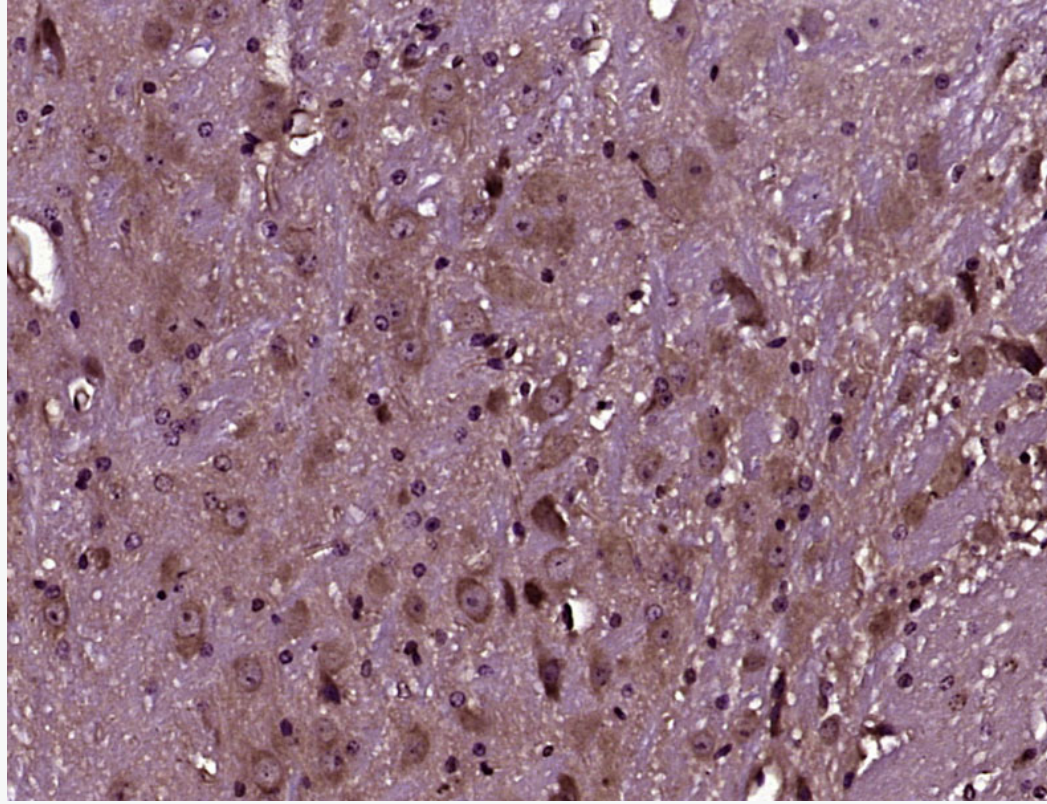
Lane 5: MCF-7 (Human) Cell Lysate at 30 ug

Primary: Anti-CD147 (SL0684R) at 1/1000 dilution

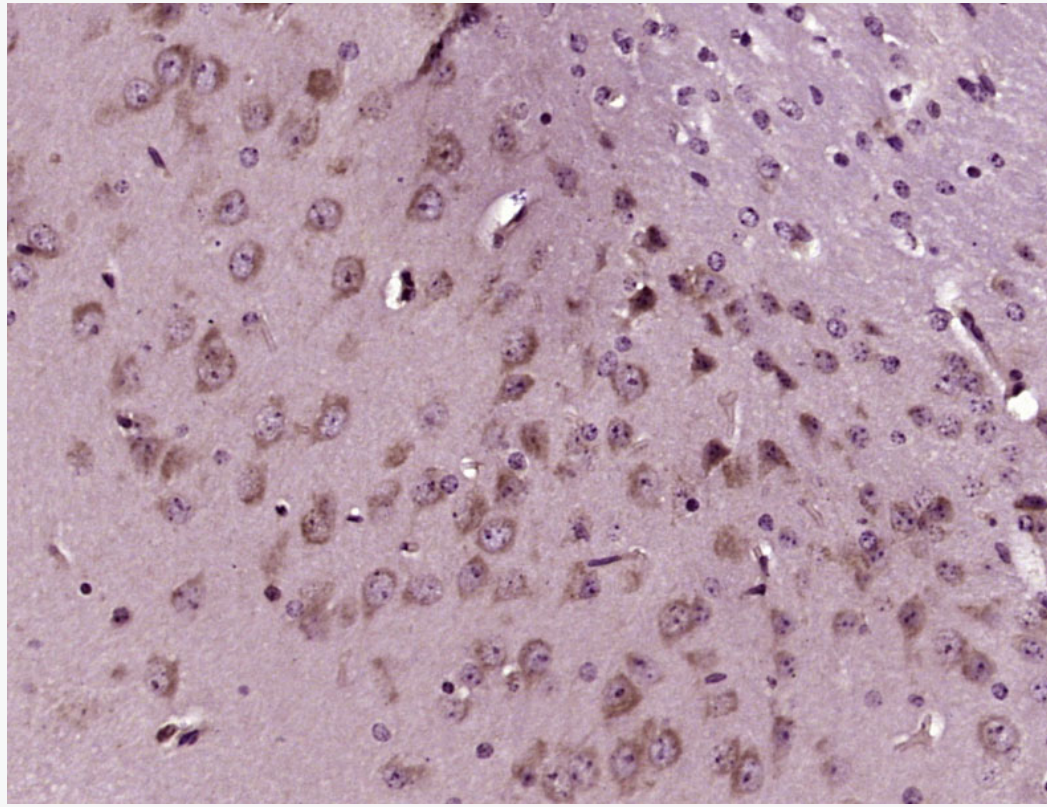
Secondary: IRDye800CW Goat Anti-Rabbit IgG at 1/20000 dilution

Predicted band size: 50-60 kD

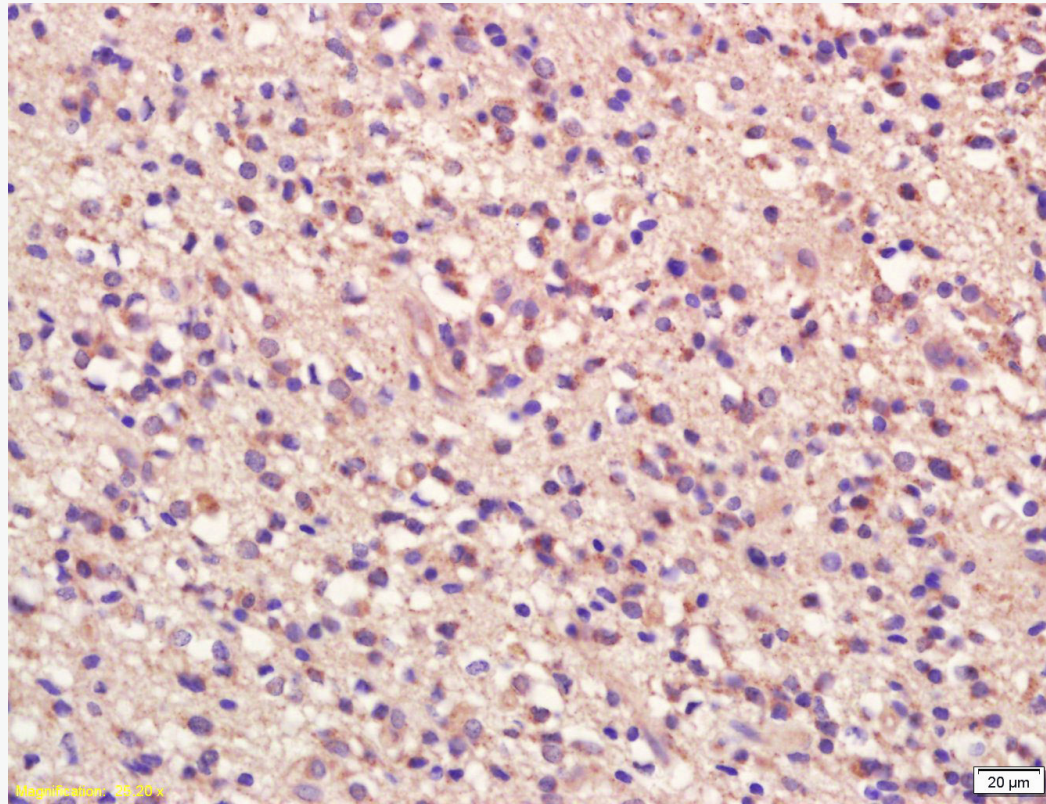
Observed band size: 60 kD



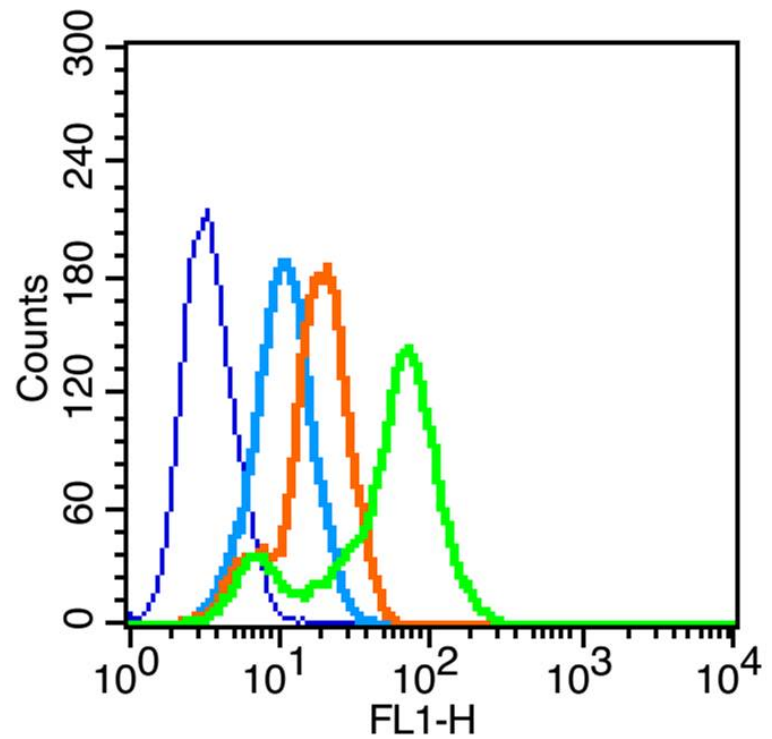
Paraformaldehyde-fixed, paraffin embedded (Mouse cerebellum); Antigen retrieval by boiling in citrate buffer (pH6.0) for 15min; Block endogenous peroxidase by 3% hydrogen peroxide for 30min; Blocking buffer (normal goat serum) at 37°C for 30min; Antibody incubation with (CD147) Primary Antibody, Unconjugated (SL0684R) at 1:400 overnight at 4°C, followed by operating according to the DAB Kit(Rabbit) (sp-0023) instructions and DAB staining.



Paraformaldehyde-fixed, paraffin embedded (Mouse brain); Antigen retrieval by boiling in so buffer (pH6.0) for 15min; Block endogenous peroxidase by 3% hydrogen peroxide for 20 min buffer (normal goat serum) at 37°C for 30min; Antibody incubation with (CD147) Polyclonal Unconjugated (SL0684R) at 1:400 overnight at 4°C, followed by operating according to SP K (sp-0023) instructions and DAB staining.



Tissue/cell: human glioma tissue; 4% Paraformaldehyde-fixed and paraffin-embedded;
Antigen retrieval: citrate buffer (1M, pH 6.0), Boiling bathing for 15min; Block endogenous
3% Hydrogen peroxide for 30min; Blocking buffer (normal goat serum,C-0005) at 37°C for 2
Incubation: Anti-CD147/TCSF/Emmprin Polyclonal Antibody, Unconjugated(SL0684R) 1:20
4°C, followed by conjugation to the secondary antibody(SP-0023) and DAB(C-0010) staining



Blank control (blue line): MCF7 (blue).

Primary Antibody (green line):Rabbit Anti-CD147 antibody(SL0684R)

Dilution: 1 μ g /10⁶ cells;

Isotype Control Antibody (orange line): Rabbit IgG .

Secondary Antibody (white blue line): F(ab')₂ fragment goat anti-rabbit IgG-FITC

Dilution: 1 μ g /test.

Protocol

The cells were fixed with 2% paraformaldehyde for 10 min at room temperature. Cells stained

Antibody for 30 min at room temperature. The cells were then incubated in 1 X PBS/2%BSA/1

to block non-specific protein-protein interactions followed by the antibody for 15 min at room



SunLong Biotech Co.,LTD
Tel: 0086-571-56623320 Fax:0086-571-56623318
E-mail:sales@sunlongbiotech.com
www.sunlongbiotech.com

The secondary antibody used for 40 min at room temperature. Acquisition of 20,000 events w