



## Rabbit Anti-LRRK2 antibody

SL0683R

**Product Name** LRRK2**Chinese Name** 富亮氨酸重复激酶 2 抗体**Alias** Dardarin; Leucine rich repeat kinase 2; LRRK 2; LRRK-2; PARK 8; PARK8; ROCO 2; ROCO-2; ROCO2; Leucine-rich repeat serine/threonine-protein kinase 2; Dardarin; LRRK2\_HUMAN; augmented in rheumatoid arthritis 17; AURA17; Leucine rich repeat kinase 2; RIPK7.**Research Area** Neurobiology**Immunogen Species** Rabbit**Clonality** Polyclonal**React Species** Human, Rat, (predicted: Mouse, Cow, )**Applications** IHC-P=1:100-500,IHC-F=1:100-500,IF=1:100-500,Flow-Cyt=1 $\mu$ g/Test (Paraffin sections need antigen repair)  
not yet tested in other applications.  
optimal dilutions/concentrations should be determined by the end user.**Theoretical molecular weight** 286kDa**Cellular localization** cytoplasmic The cell membrane**Form** Liquid**Concentration** 1mg/ml**immunogen** KLH conjugated synthetic peptide derived from human LRRK2: 2455-2527/2527**Lsotype** IgG**Purification** affinity purified by Protein A**Buffer Solution** 1M TBS(pH7.4) with 1% BSA, 3% Proclin300 and 50% Glycerol.**Storage** Shipped at 4°C. Store at -20 °C for one year. Avoid repeated freeze/thaw cycles.**Attention** This product as supplied is intended for research use only, not for use in human, therapeutic or diagnostic applications.



**PubMed**

[PubMed](#)

LRRK2 (Dardarin) is encoded by the gene LRRK2. Genetic mutations of LRRK2 have been linked to Parkinsonism and synucleinopathies. LRRK2 belongs to the ROCO protein family and includes a protein kinase domain of the MAPKKK class and several other major functional domains.

**Function:**

May play a role in the phosphorylation of proteins central to Parkinson disease. Phosphorylates PRDX3. May also have GTPase activity.

**Subcellular Location:**

Cytoplasm. Membrane. Mitochondrion. Localized in the cytoplasm and associated with cellular membrane structures. Associates with the mitochondrial outer membrane.

**Tissue Specificity:**

Expressed throughout the adult brain, but at a lower level than in heart and liver. Also expressed in placenta, lung, skeletal muscle, kidney and pancreas. In the brain, expressed in the cerebellum, cerebral cortex, medulla, spinal cord occipital pole, frontal lobe, temporal lobe and putamen. Expression is particularly high in brain dopaminoceptive areas.

**Product  
Detail**

**DISEASE:**

Defects in LRRK2 are the cause of Parkinson disease type 8 (PARK8) [MIM:607060]. A slowly progressive neurodegenerative disorder characterized by bradykinesia, rigidity, resting tremor, postural instability, neuronal loss in the substantia nigra, and the presence of neurofibrillary MAPT (tau)-positive and Lewy bodies in some patients.

**Similarity:**

Belongs to the protein kinase superfamily. TKL Ser/Thr protein kinase family. Contains 12 LRR (leucine-rich) repeats. Contains 1 protein kinase domain. Contains 1 Roc domain.

**SWISS:**

Q5S007

**Gene ID:**

120892

**Database links:**

[Entrez Gene: 120892](#) Human

[Entrez Gene: 66725](#) Mouse

[Entrez Gene: 300160](#) Rat

[Omim: 609007](#) Human

[SwissProt: Q5S007](#) Human

[SwissProt: Q5S006](#) Mouse

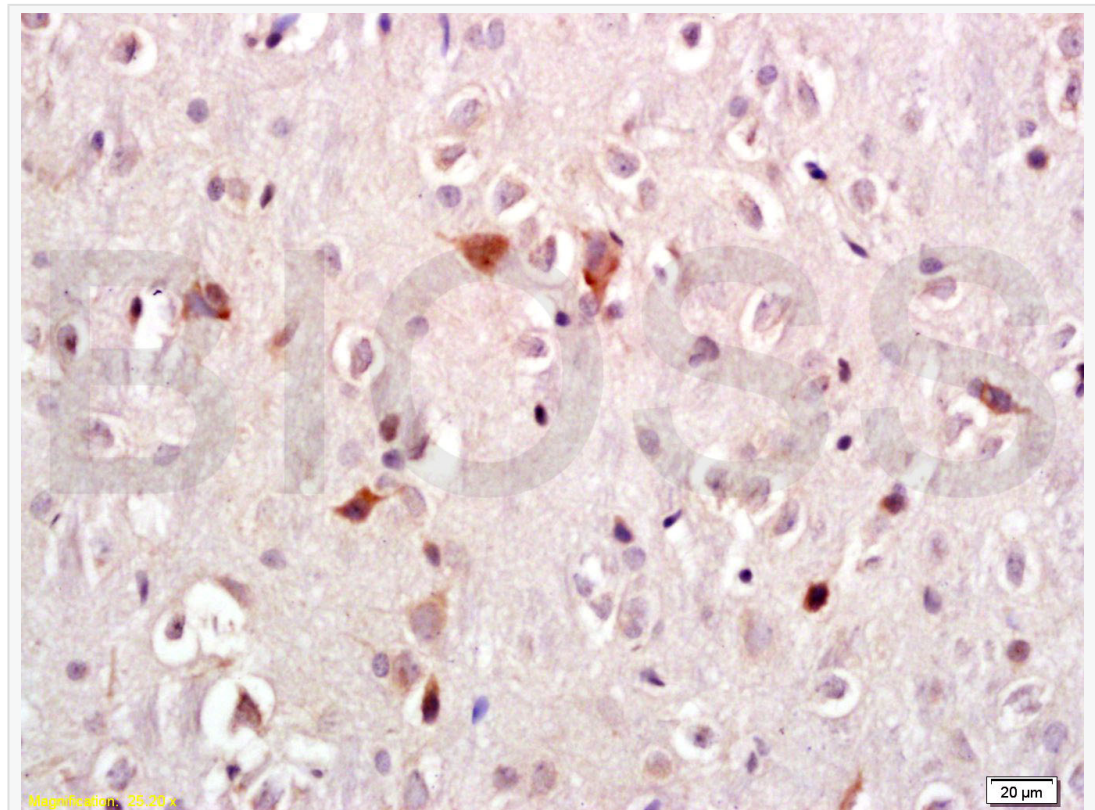
[Unigene: 187636](#) Human

[Unigene: 37558](#) Mouse

[Unigene: 213971](#) Rat

主要用于：帕金森氏病的研究  
亮氨酸丰富区重复激酶 2

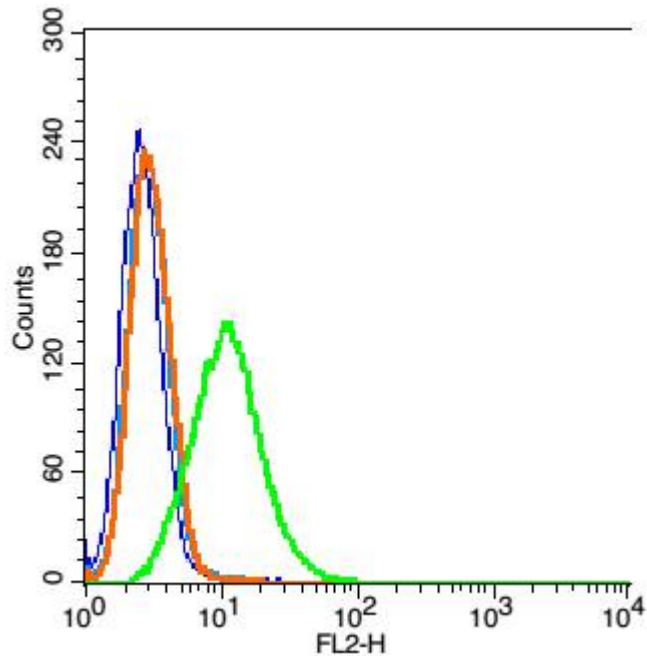
**Product  
Picture**



Tissue/cell: rat brain tissue; 4% Paraformaldehyde-fixed and paraffin-embedded;

Antigen retrieval: citrate buffer ( 1M, pH 6.0 ), Boiling bathing for 15min; Block endogenous peroxidase by 3% Hydrogen peroxide for 30min; Blocking buffer (normal goat serum,C-0005) at 37°C for 20 min;

Incubation: Anti-LRRK2 Polyclonal Antibody, Unconjugated(SL0683R) 1:300, overnight at 4°C, followed by conjugation to the secondary antibody(SP-0023) and DAB(C-0010) staining



Blank control: A549(blue), the cells were fixed with 2% paraformaldehyde (10 min) and then permeabilized with ice-cold 90% methanol for 30 min on ice..

Isotype Control Antibody: Rabbit IgG(orange) ; Secondary Antibody: Goat anti-rabbit IgG-FITC(white blue), Dilution: 1:100 in 1 X PBS containing 0.5% BSA ; Primary Antibody Dilution: 1µg in 100 µL1X PBS containing 0.5%



SunLong Biotech Co.,LTD  
Tel: 0086-571-56623320 Fax:0086-571-56623318  
E-mail:sales@sunlongbiotech.com  
www.sunlongbiotech.com

---

BSA(green).