

Rabbit Anti-Insulin Receptor antibody

SL0681R

Product Name Insulin Receptor

Chinese Name 胰岛素受体抗体

Alias CD 220; CD220; CD220 antigen; HHF 5; HHF5; INSR; IR; INSR_HUMAN; Insulin receptor subunit alpha.

Research Area Cell biology Neurobiology Signal transduction Apoptosis The cell membrane 受体 Endocrinopathy Cell Surface Molecule glycoprotein

Immunogen Species Rabbit

Clonality Polyclonal

React Species Human, Mouse, Rat, (predicted: Chicken, Dog, Cow, Horse, Rabbit, Sheep,)
WB=1:500-2000,IHC-P=1:100-500,IHC-F=1:100-500,IF=1:100-500,Flow-Cyt=1ug/Test
(Paraffin sections need antigen repair)

Applications not yet tested in other applications.
optimal dilutions/concentrations should be determined by the end user.

Theoretical molecular weight 80/152kDa

Cellular localization The cell membrane

Form Liquid

Concentration 1mg/ml

immunogen KLH conjugated synthetic peptide derived from human Insulin Receptor: 51-150/1384

Lsotype IgG

Purification affinity purified by Protein A

Buffer Solution 1M TBS(pH7.4) with 1% BSA, 3% Proclin300 and 50% Glycerol.

Storage Shipped at 4°C. Store at -20 °C for one year. Avoid repeated freeze/thaw cycles.

Attention This product as supplied is intended for research use only, not for use in human, therapeutic or diagnostic applications.

PubMed [PubMed](#)

Product The insulin receptor is a heterotetrameric membrane glycoprotein with tyrosine-protein

Detail

kinase activity, consisting of disulfide-linked subunits in a beta-alpha-alpha-beta configuration. The beta subunit possesses a single transmembrane domain, whereas the alpha subunit is completely extracellular. The alpha chains contribute to the formation of the ligand-binding domain, while the beta chains carry the kinase domain. Binding of insulin to the insulin receptor stimulates its association with downstream mediators including IRS1 and phosphatidylinositol 3'-kinase (PI3K) which leads to glucose uptake. Two transcript variants encoding different isoforms have been found for this gene produced by alternative splicing.

Protein kinases are enzymes that transfer a phosphate group from a phosphate donor, generally the γ phosphate of ATP, onto an acceptor amino acid in a substrate protein. By this basic mechanism, protein kinases mediate most of the signal transduction in eukaryotic cells, regulating cellular metabolism, transcription, cell cycle progression, cytoskeletal rearrangement and cell movement, apoptosis, and differentiation. With more than 500 gene products, the protein kinase family is one of the largest families of proteins in eukaryotes. The family has been classified in 8 major groups based on sequence comparison of their tyrosine (PTK) or serine/threonine (STK) kinase catalytic domains. The tyrosine kinase (TK) group is mainly involved in the regulation of cell-cell interactions such as differentiation, adhesion, motility and death. There are currently about 90 TK genes sequenced, 58 are of receptor protein TK (e.g. EGFR, EPH, FGFR, PDGFR, TRK, and VEGFR families), and 32 of cytosolic TK (e.g. ABL, FAK, JAK, and SRC families).

Function:

Receptor tyrosine kinase which mediates the pleiotropic actions of insulin. Binding of insulin leads to phosphorylation of several intracellular substrates, including, insulin receptor substrates (IRS1, 2, 3, 4), SHC, GAB1, CBL and other signaling intermediates. Each of these phosphorylated proteins serve as docking proteins for other signaling proteins that contain Src-homology-2 domains (SH2 domain) that specifically recognize different phosphotyrosines residues, including the p85 regulatory subunit of PI3K and SHP2. Phosphorylation of IRSs proteins lead to the activation of two main signaling pathways: the PI3K-AKT/PKB pathway, which is responsible for most of the metabolic actions of insulin, and the Ras-MAPK pathway, which regulates expression of some genes and cooperates with the PI3K pathway to control cell growth and differentiation. Binding of the SH2 domains of PI3K to phosphotyrosines on IRS1 leads to the activation of PI3K and the generation of phosphatidylinositol-(3, 4, 5)-triphosphate (PIP3), a lipid second messenger, which activates several PIP3-dependent serine/threonine kinases, such as PDK1 and subsequently AKT/PKB. The net effect of this pathway is to produce a translocation of the glucose transporter SLC2A4/GLUT4 from cytoplasmic vesicles to the cell membrane to facilitate glucose transport. Moreover, upon insulin stimulation, activated AKT/PKB is responsible for: anti-apoptotic effect of insulin by inducing phosphorylation of BAD; regulates the expression of gluconeogenic and lipogenic enzymes by controlling the activity of the winged helix or forkhead (FOX) class of transcription factors. Another pathway regulated by PI3K-AKT/PKB activation is

mTORC1 signaling pathway which regulates cell growth and metabolism and integrates signals from insulin. AKT mediates insulin-stimulated protein synthesis by phosphorylating TSC2 thereby activating mTORC1 pathway. The Ras/RAF/MAP2K/MAPK pathway is mainly involved in mediating cell growth, survival and cellular differentiation of insulin. Phosphorylated IRS1 recruits GRB2/SOS complex, which triggers the activation of the Ras/RAF/MAP2K/MAPK pathway. In addition to binding insulin, the insulin receptor can bind insulin-like growth factors (IGFI and IGFI). Isoform Short has a higher affinity for IGFI binding. When present in a hybrid receptor with IGF1R, binds IGF1. PubMed:12138094 shows that hybrid receptors composed of IGF1R and INSR isoform Long are activated with a high affinity by IGF1, with low affinity by IGF2 and not significantly activated by insulin, and that hybrid receptors composed of IGF1R and INSR isoform Short are activated by IGF1, IGF2 and insulin. In contrast, PubMed:16831875 shows that hybrid receptors composed of IGF1R and INSR isoform Long and hybrid receptors composed of IGF1R and INSR isoform Short have similar binding characteristics, both bind IGF1 and have a low affinity for insulin.

Subunit:

Tetramer of 2 alpha and 2 beta chains linked by disulfide bonds. The alpha chains contribute to the formation of the ligand-binding domain, while the beta chains carry the kinase domain. Forms a hybrid receptor with IGF1R, the hybrid is a tetramer consisting of 1 alpha chain and 1 beta chain of INSR and 1 alpha chain and 1 beta chain of IGF1R. Interacts with SORBS1 but dissociates from it following insulin stimulation. Binds SH2B2. Activated form of INSR interacts (via Tyr-999) with the PTB/PID domains of IRS1 and SHC1. The sequences surrounding the phosphorylated NPXY motif contribute differentially to either IRS1 or SHC1 recognition. Interacts (via tyrosines in the C-terminus) with IRS2 (via PTB domain and 591-786 AA); the 591-786 would be the primary anchor of IRS2 to INSR while the PTB domain would have a stabilizing action on the interaction with INSR. Interacts with the SH2 domains of the 85 kDa regulatory subunit of PI3K (PIK3R1) in vitro, when autophosphorylated on tyrosine residues. Interacts with SOCS7. Interacts (via the phosphorylated Tyr-999), with SOCS3. Interacts (via the phosphorylated Tyr-1185, Tyr-1189, Tyr-1190) with SOCS1. Interacts with CAV2 (tyrosine-phosphorylated form); the interaction is increased with 'Tyr-27' phosphorylation of CAV2 (By similarity). Interacts with ARRB2 (By similarity). Interacts with GRB10; this interaction blocks the association between IRS1/IRS2 and INSR, significantly reduces insulin-stimulated tyrosine phosphorylation of IRS1 and IRS2 and thus decreases insulin signaling. Interacts with GRB7 (By similarity). Interacts with PDPK1. Interacts (via Tyr-1190) with GRB14 (via BPS domain); this interaction protects the tyrosines in the activation loop from dephosphorylation, but promotes dephosphorylation of Tyr-999, this results in decreased interaction with, and phosphorylation of, IRS1. Interacts (via subunit alpha) with ENPP1 (via 485-599 AA); this interaction blocks autophosphorylation. Interacts with PTPRE; this interaction is dependent of Tyr-1185, Tyr-1189 and Tyr-1190 of the INSR. Interacts with STAT5B (via SH2 domain). Interacts with PTPRF.

Subcellular Location:

Membrane; Single-pass type I membrane protein.

Tissue Specificity:

Isoform Long and isoform Short are predominantly expressed in tissue targets of insulin metabolic effects: liver, adipose tissue and skeletal muscle but are also expressed in the peripheral nerve, kidney, pulmonary alveoli, pancreatic acini, placenta vascular endothelium, fibroblasts, monocytes, granulocytes, erythrocytes and skin. Isoform Short is preferentially expressed in fetal cells such as fetal fibroblasts, muscle, liver and kidney. Found as a hybrid receptor with IGF1R in muscle, heart, kidney, adipose tissue, skeletal muscle, hepatoma, fibroblasts, spleen and placenta (at protein level). Overexpressed in several tumors, including breast, colon, lung, ovary, and thyroid carcinomas.

Post-translational modifications:

After being transported from the endoplasmic reticulum to the Golgi apparatus, the single glycosylated precursor is further glycosylated and then cleaved, followed by its transport to the plasma membrane.

Autophosphorylated on tyrosine residues in response to insulin. Phosphorylation of Tyr-999 is required for IRS1-, SHC1-, and STAT5B-binding. Dephosphorylated by PTPRE on Tyr-999, Tyr-1185, Tyr-1189 and Tyr-1190 residues. Dephosphorylated by PTPRF.

DISEASE:

Defects in INSR are the cause of Rabson-Mendenhall syndrome (RMS) [MIM:262190]; also known as Mendenhall syndrome. RMS is a severe insulin resistance syndrome characterized by insulin-resistant diabetes mellitus with pineal hyperplasia and somatic abnormalities. Typical features include coarse, senile-appearing facies, dental and skin abnormalities, abdominal distension, and phallic enlargement. Inheritance is autosomal recessive.

Defects in INSR are the cause of leprechaunism (LEPRCH) [MIM:246200]; also known as Donohue syndrome. Leprechaunism represents the most severe form of insulin resistance syndrome, characterized by intrauterine and postnatal growth retardation and death in early infancy. Inheritance is autosomal recessive.

Defects in INSR may be associated with noninsulin-dependent diabetes mellitus (NIDDM) [MIM:125853]; also known as diabetes mellitus type 2.

Defects in INSR are the cause of familial hyperinsulinemic hypoglycemia type 5 (HHF5) [MIM:609968]. Familial hyperinsulinemic hypoglycemia [MIM:256450], also referred to as congenital hyperinsulinism, nesidioblastosis, or persistent hyperinsulinemic hypoglycemia of infancy (PPHI), is the most common cause of persistent hypoglycemia in infancy and is due to defective negative feedback regulation of insulin secretion by low glucose levels.

Defects in INSR are the cause of insulin-resistant diabetes mellitus with acanthosis nigricans type A (IRAN type A) [MIM:610549]. This syndrome is characterized by the association of severe insulin resistance (manifested by marked hyperinsulinemia and a

failure to respond to exogenous insulin) with the skin lesion acanthosis nigricans and ovarian hyperandrogenism in adolescent female subjects. Women frequently present with hirsutism, acne, amenorrhea or oligomenorrhea, and virilization. This syndrome is different from the type B that has been demonstrated to be secondary to the presence of circulating autoantibodies against the insulin receptor.

Similarity:

Belongs to the protein kinase superfamily. Tyr protein kinase family. Insulin receptor subfamily.

Contains 3 fibronectin type-III domains.

Contains 1 protein kinase domain.

SWISS:

P06213

Gene ID:

3643

Database links:

[Entrez Gene: 3643](#) Human

[Entrez Gene: 16337](#) Mouse

[Entrez Gene: 24954](#) Rat

[Entrez Gene: 484990](#) Dog

[Omim: 147670](#) Human

[SwissProt: P06213](#) Human

[SwissProt: P15208](#) Mouse

[SwissProt: P15127](#) Rat

[Unigene: 465744](#) Human

[Unigene: 9876](#) Rat

胰岛素受体是一个四聚体，由两个 α 亚基和两个 β 亚基通过二硫键连接。两个 α 亚基位于细胞质膜的外侧，其上有胰岛素的结合位点；两个 β 亚基是 Transmembrane protein，起 Signal transduction 作用。无胰岛素结合时，受体的酪氨酸蛋白激酶没

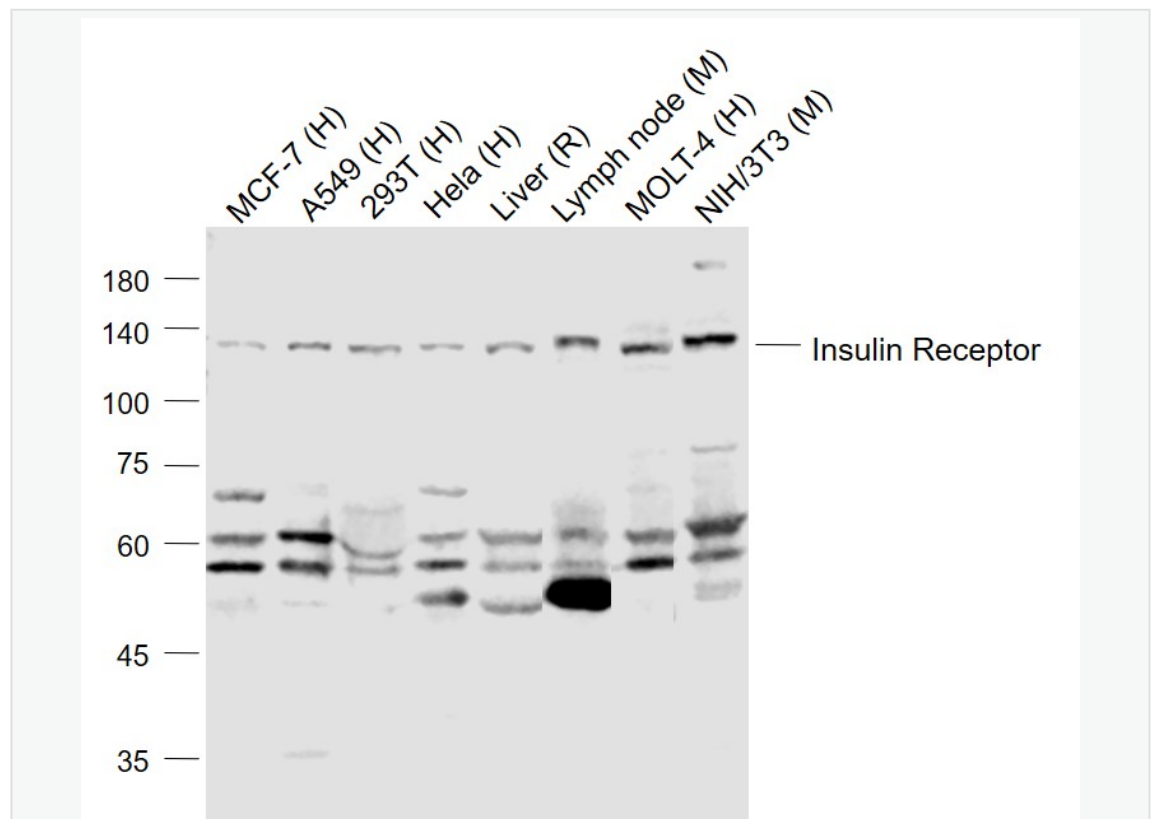
有活性。当胰岛素与受体的 α 亚基结合并改变了 β 亚基的构型后，酪氨酸蛋白激酶才被激活，激活后可催化两个反应：

①使四聚体复合物中 β 亚基特异位点的酪氨酸残基磷酸化,这种过程称为自我磷酸化 (autophosphorylation);

②将胰岛素受体底物(insulin receptor substrate, IRSs)上具有重要作用的十几个酪氨酸残基磷酸化，磷酸化的 IRSs 能够结合并激活下游效应物。

(isoform CRA-c)胰岛素受体是一种 Transmembrane protein, 含两个 α 亚基 (135kda) 和两个 β 亚基 (分子量: 97kda)。胰岛素受体是胰岛素得传感装置，可在细胞内和 The cell membrane 循环。

Product
Picture



Sample:

Lane 1: MCF-7 (Human) Cell Lysate at 30 ug

Lane 2: A549 (Human) Cell Lysate at 30 ug

Lane 3: 293T (Human) Cell Lysate at 30 ug

Lane 4: HeLa (Human) Cell Lysate at 30 ug

Lane 5: Liver (Rat) Lysate at 40 ug

Lane 6: Lymph node (Mouse) Lysate at 40 ug

Lane 7: MOLT-4 (Human) Cell Lysate at 30 ug

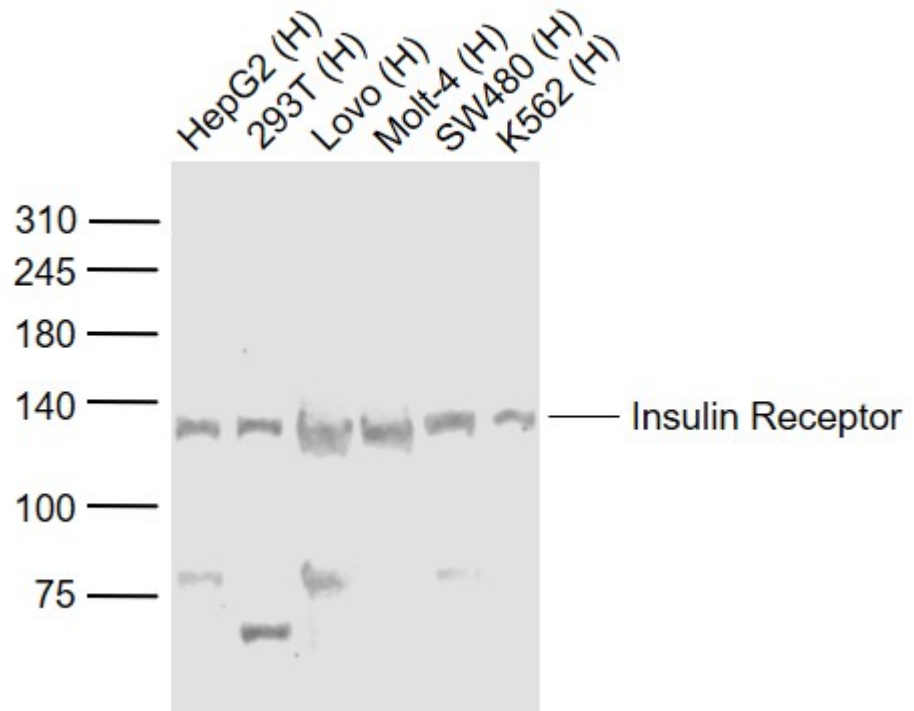
Lane 8: NIH/3T3 (Mouse) Cell Lysate at 30 ug

Primary: Anti-Insulin Receptor (SL0681R) at 1/1000 dilution

Secondary: IRDye800CW Goat Anti-Rabbit IgG at 1/20000 dilution

Predicted band size: 120 kD

Observed band size: 120 kD



Sample:

Lane 1: HepG2 (Human) Cell Lysate at 30 ug

Lane 2: 293T (Human) Cell Lysate at 30 ug

Lane 3: Lovo (Human) Cell Lysate at 30 ug

Lane 4: Molt-4 (Human) Cell Lysate at 30 ug

Lane 5: SW480 (Human) Cell Lysate at 30 ug

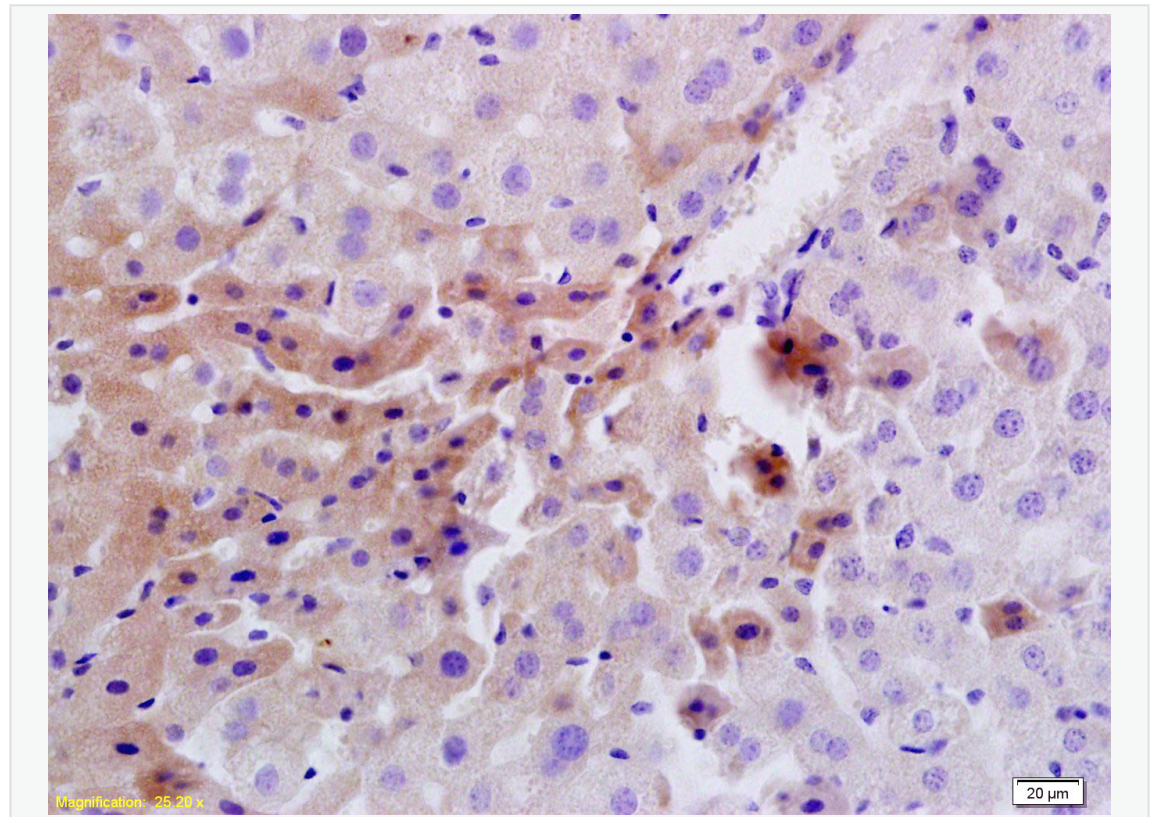
Lane 6: K562 (Human) Cell Lysate at 30 ug

Primary: Anti-Insulin Receptor (SL0681R) at 1/1000 dilution

Secondary: IRDye800CW Goat Anti-Rabbit IgG at 1/20000 dilution

Predicted band size: 120 kD

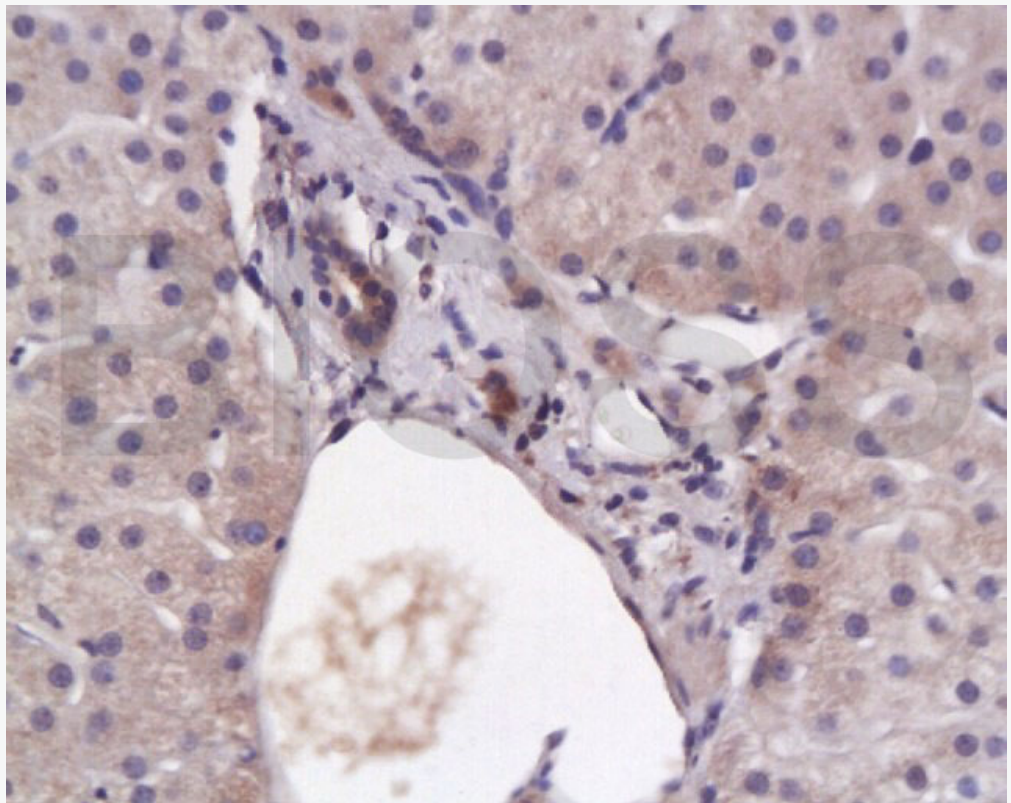
Observed band size: 120 kD



Tissue/cell: rat liver tissue; 4% Paraformaldehyde-fixed and paraffin-embedded;
Antigen retrieval: citrate buffer (1M, pH 6.0), Boiling bathing for 15min; Block endogenous peroxidase by 3% Hydrogen peroxide for 30min; Blocking buffer (normal goat serum,C-0005) at 37°C for 20 min;

Incubation: Anti-Insulin Receptor/CD220 Polyclonal Antibody,

Unconjugated(SL0681R) 1:200, overnight at 4°C, followed by conjugation to the secondary antibody(SP-0023) and DAB(C-0010) staining

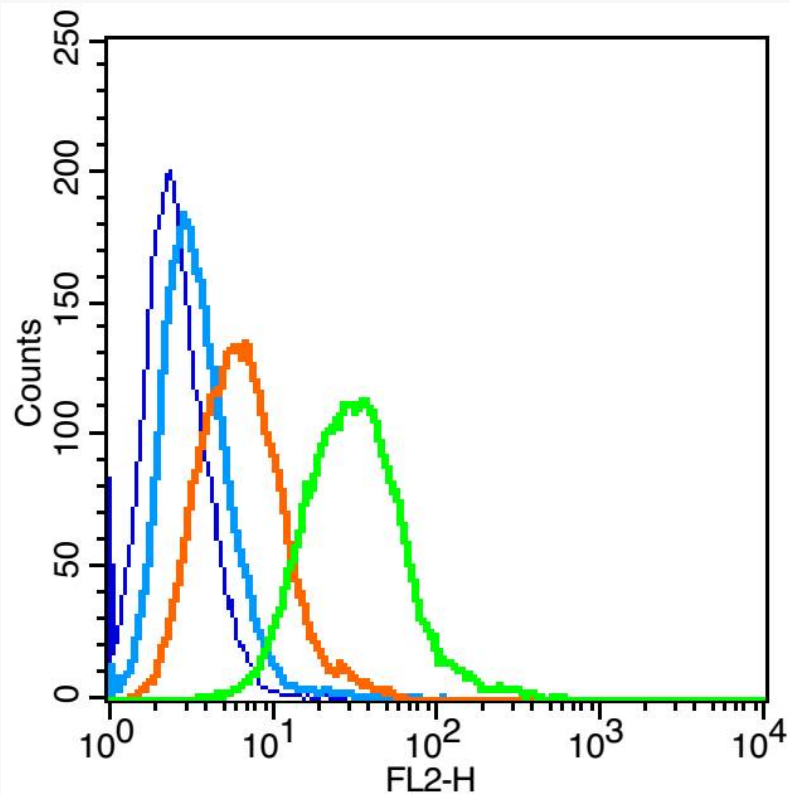


Tissue/cell: human liver tissue; 4% Paraformaldehyde-fixed and paraffin-embedded;
Antigen retrieval: citrate buffer (1M, pH 6.0), Boiling bathing for 15min; Block

endogenous peroxidase by 3% Hydrogen peroxide for 30min; Blocking buffer (normal goat serum,C-0005) at 37°C for 20 min;

Incubation: Anti-Insulin Receptor/CD220 Polyclonal Antibody,

Unconjugated(SL0681R) 1:200, overnight at 4°C, followed by conjugation to the secondary antibody(SP-0023) and DAB(C-0010) staining



Blank control: Raji (blue).

Primary Antibody: Rabbit Anti-Insulin Receptor alpha antibody(SL0681R), Dilution: 1µg in 100 µL 1X PBS containing 0.5% BSA;

Isotype Control Antibody: Rabbit IgG(orange),used under the same conditions);

Secondary Antibody: Goat anti-rabbit IgG-PE(white blue), Dilution: 1:200 in 1 X PBS containing 0.5% BSA.

Protocol

The cells were fixed with 2% paraformaldehyde (10 min) , then permeabilized with 90% ice-cold methanol for 30 min on ice. Primary antibody (SL0681R, 1 μ g /1x10⁶ cells) were incubated for 30 min on the ice, followed by 1 X PBS containing 0.5% BSA + 1 0% goat serum (15 min) to block non-specific protein-protein interactions. Then the Goat Anti-rabbit IgG/PE antibody was added into the blocking buffer mentioned above to react with the primary antibody at 1/200 dilution for 30 min on ice. Acquisition of 20,000 events was performed.