

## Rabbit Anti-PSCA antibody

SL0669R

**Product Name** PSCA

**Chinese Name** 前列腺 Stem cells 抗原抗体

**Alias** prostate stem cell antigen preproprotein; PRO 232; PRO232; Prostate stem cell antigen; PSCA\_HUMAN.

**Research Area** Tumour Cell biology immunology Stem cells transcriptional regulatory factor

**Immunogen Species** Rabbit

**Clonality** Polyclonal

**React Species** Human, Rat,

**Applications** IHC-P=1:100-500,IHC-F=1:100-500,IF=1:100-500 (Paraffin sections need antigen repair)  
not yet tested in other applications.  
optimal dilutions/concentrations should be determined by the end user.

**Theoretical molecular weight** 11kDa

**Cellular localization** The cell membrane

**Form** Liquid

**Concentration** 1mg/ml

**immunogen** KLH conjugated synthetic peptide derived from human PSCA: 24-123/123

**Lsotype** IgG

**Purification** affinity purified by Protein A

**Buffer Solution** 1M TBS(pH7.4) with 1% BSA, 3% Proclin300 and 50% Glycerol.

**Storage** Shipped at 4°C. Store at -20 °C for one year. Avoid repeated freeze/thaw cycles.

**Attention** This product as supplied is intended for research use only, not for use in human, therapeutic or diagnostic applications.

**PubMed** [PubMed](#)

**Product** This gene encodes a glycosylphosphatidylinositol-anchored cell membrane

## Detail

glycoprotein. In addition to being highly expressed in the prostate it is also expressed in the bladder, placenta, colon, kidney, and stomach. This gene is up-regulated in a large proportion of prostate cancers and is also detected in cancers of the bladder and pancreas. This gene has a nonsynonymous nucleotide polymorphism at its start codon. This gene encodes a glycosylphosphatidylinositol-anchored cell membrane glycoprotein. In addition to being highly expressed in the prostate it is also expressed in the bladder, placenta, colon, kidney, and stomach. This gene is up-regulated in a large proportion of prostate cancers and is also detected in cancers of the bladder and pancreas. This gene has a nonsynonymous nucleotide polymorphism at its start codon.

### Function:

May be involved in the regulation of cell proliferation. Has a cell-proliferation inhibition activity in vitro.

### Subcellular Location:

Cell membrane; Lipid-anchor, GPI-anchor.

### Tissue Specificity:

Highly expressed in prostate (basal, secretory and neuroendocrine epithelium cells). Also found in bladder (transitional epithelium), placenta (trophoblasts), stomach (neuroendocrine cells), colon (neuroendocrine cells) and kidney (collecting ducts). Overexpressed in prostate cancers and expression is correlated with tumor stage, grade and androgen-independence. Highly expressed in prostate cancer bone metastases. Expressed in gastric epithelial cells, mainly in the isthmus (at protein level). Not detected in normal intestinal epithelium (at protein level).

### Similarity:

Contains 1 UPAR/Ly6 domain.

### SWISS:

O43653

### Gene ID:

8000

### Database links:

[Entrez Gene: 8000](#) Human

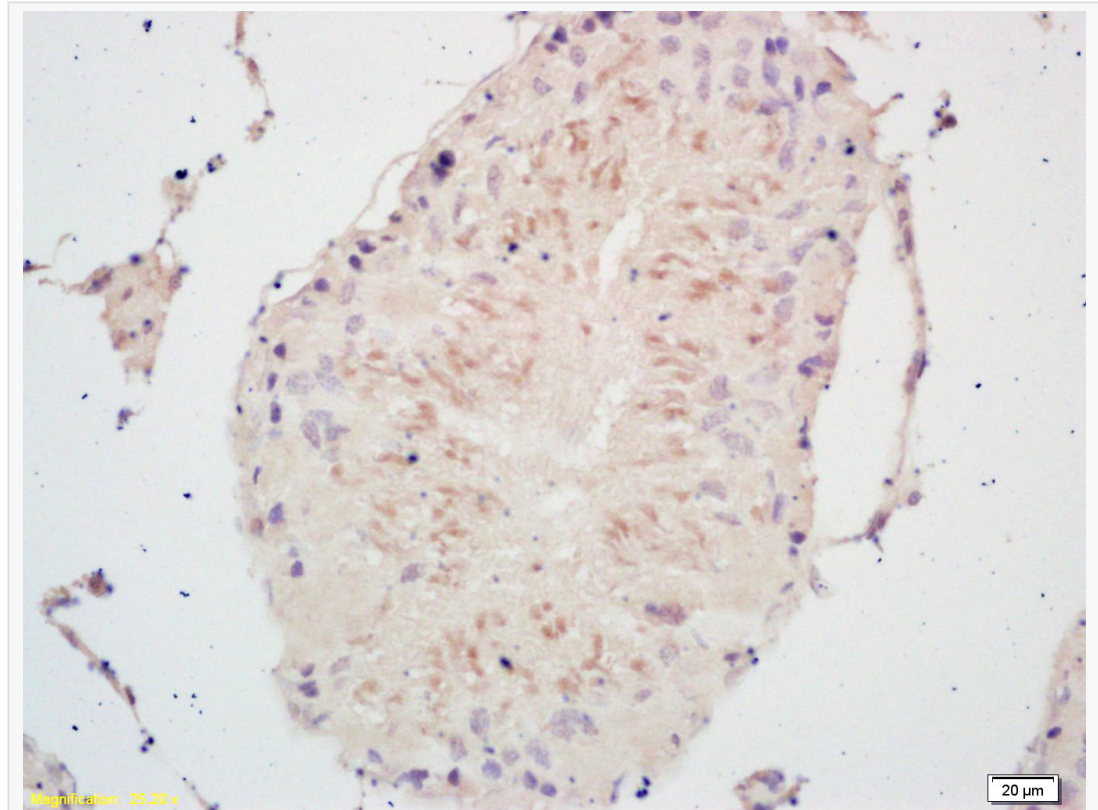
[Omim: 602470](#) Human

[SwissProt: O43653](#) Human

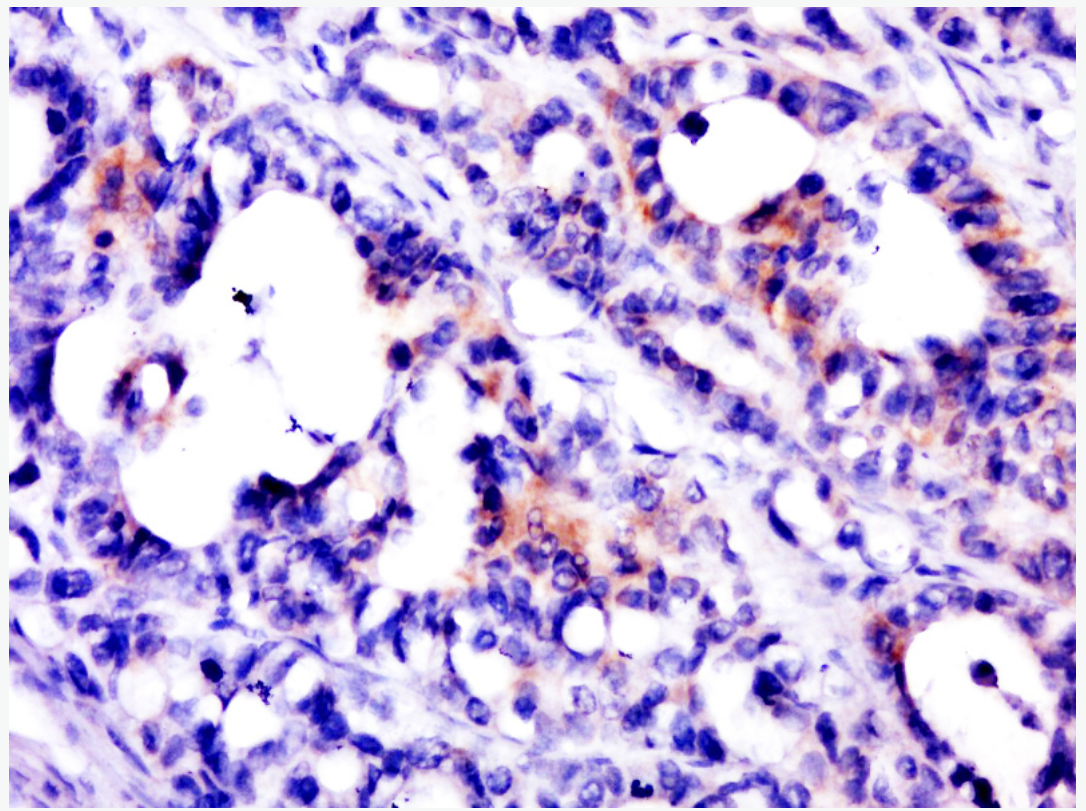
[Unigene: 652235](#) Human

前列腺 Stem cells 抗原，除前列腺外，尿道、胃等多种组织都分布。

**Product  
Picture**



Tissue/cell: rat testis tissue; 4% Paraformaldehyde-fixed and paraffin-embedded;  
Antigen retrieval: citrate buffer ( 1M, pH 6.0 ), Boiling bathing for 15min; Block  
endogenous peroxidase by 3% Hydrogen peroxide for 30min; Blocking buffer  
(normal goat serum,C-0005) at 37°C for 20 min;  
Incubation: Anti-PSCA Polyclonal Antibody, Unconjugated(SL0669R) 1:200,  
overnight at 4°C, followed by conjugation to the secondary antibody(SP-0023) and  
DAB(C-0010) staining



Paraformaldehyde-fixed, paraffin embedded (human stomach cancer); Antigen retrieval by boiling in sodium citrate buffer (pH6.0) for 15min; Block endogenous peroxidase by 3% hydrogen peroxide for 20 minutes; Blocking buffer (normal goat serum) at 37°C for 30min; Antibody incubation with (PSCA) Polyclonal Antibody, Unconjugated (SL0669R) at 1:400 overnight at 4°C, followed by a conjugated secondary (sp-0023) for 20 minutes and DAB staining.