

Rabbit Anti-LRP/MVP antibody

SL0661R

Product Name LRP/MVP

Chinese Name 肺耐药相关蛋白抗体

Alias 2310009M24Rik; LRP; Lung Resistance Related Protein; Lung resistance-related protein; Major Vault Protein; MVP; MVP_HUMAN; VAULT 1; VAULT1.

Research Area Tumour Cell biology immunology Apoptosis

Immunogen Species Rabbit

Clonality Polyclonal

React Species Human, (predicted: Mouse, Rat, Dog, Pig, Cow, Horse, Rabbit, Guinea Pig,)
IHC-P=1:100-500,IHC-F=1:100-500,ICC/IF=1:100-500,IF=1:100-500,Flow-Cyt=2 μ g/Test
(Paraffin sections need antigen repair)
Applications not yet tested in other applications.
optimal dilutions/concentrations should be determined by the end user.

Theoretical molecular weight 99kDa

Cellular localization The nucleus cytoplasmic

Form Liquid

Concentration 1mg/ml

immunogen KLH conjugated synthetic peptide derived from human LRP: 88-180/893

Lsotype IgG

Purification affinity purified by Protein A

Buffer Solution 1M TBS(pH7.4) with 1% BSA, 3% Proclin300 and 50% Glycerol.

Storage Shipped at 4°C. Store at -20 °C for one year. Avoid repeated freeze/thaw cycles.

Attention This product as supplied is intended for research use only, not for use in human, therapeutic or diagnostic applications.

PubMed [PubMed](#)

Product This gene encodes the major component of the vault complex. Vaults are multi-subunit

Detail

ribonucleoprotein structures that may be involved in nucleo-cytoplasmic transport. The encoded protein may play a role in multiple cellular processes by regulating the MAP kinase, JAK/STAT and phosphoinositide 3-kinase/Akt signaling pathways. The encoded protein also plays a role in multidrug resistance, and expression of this gene may be a prognostic marker for several types of cancer. Alternatively spliced transcript variants have been observed for this gene. [provided by RefSeq, May 2012]

Function:

Required for normal vault structure. Vaults are multi-subunit structures that may act as scaffolds for proteins involved in signal transduction. Vaults may also play a role in nucleo-cytoplasmic transport. Down-regulates INFG-mediated STAT1 signaling and subsequent activation of JAK. Down-regulates SRC activity and signaling through MAP kinases.

Subunit:

The vault ribonucleoprotein particle is a huge (400 A x 670 A) cage structure of 12.9 MDa. It consists of a dimer of half-vaults, with each half-vault comprising 39 identical major vault protein (MVP) chains, PARP4 and one or more vault RNAs (vRNAs). Interacts with TEP1. Interacts with PTEN and activated MAPK1. The phosphorylated protein interacts with the SH2 domains of PTPN11 and SRC. Interacts with APEX1. May interact with ZNF540.

Subcellular Location:

Cytoplasm. Nucleus, nuclear pore complex.

Tissue Specificity:

Present in most normal tissues. Higher expression observed in epithelial cells with secretory and excretory functions, as well as in cells chronically exposed to xenobiotics, such as bronchial cells and cells lining the intestine. Overexpressed in many multidrug-resistant cancer cells.

Post-translational modifications:

Phosphorylated on Tyr residues after EGF stimulation.

Dephosphorylated by PTPN11.

Similarity:

Contains 9 MVP (vault) repeats.

SWISS:

Q14764

Gene ID:

9961

Database links:

[Entrez Gene: 9961](#) Human

[Entrez Gene: 78388](#) Mouse

[Entrez Gene: 64681](#) Rat

[Entrez Gene: 516456](#) Cow

[Omim: 605088](#) Human

[SwissProt: Q3SYU9](#) Cow

[SwissProt: Q14764](#) Human

[SwissProt: Q9EQK5](#) Mouse

[SwissProt: Q62667](#) Rat

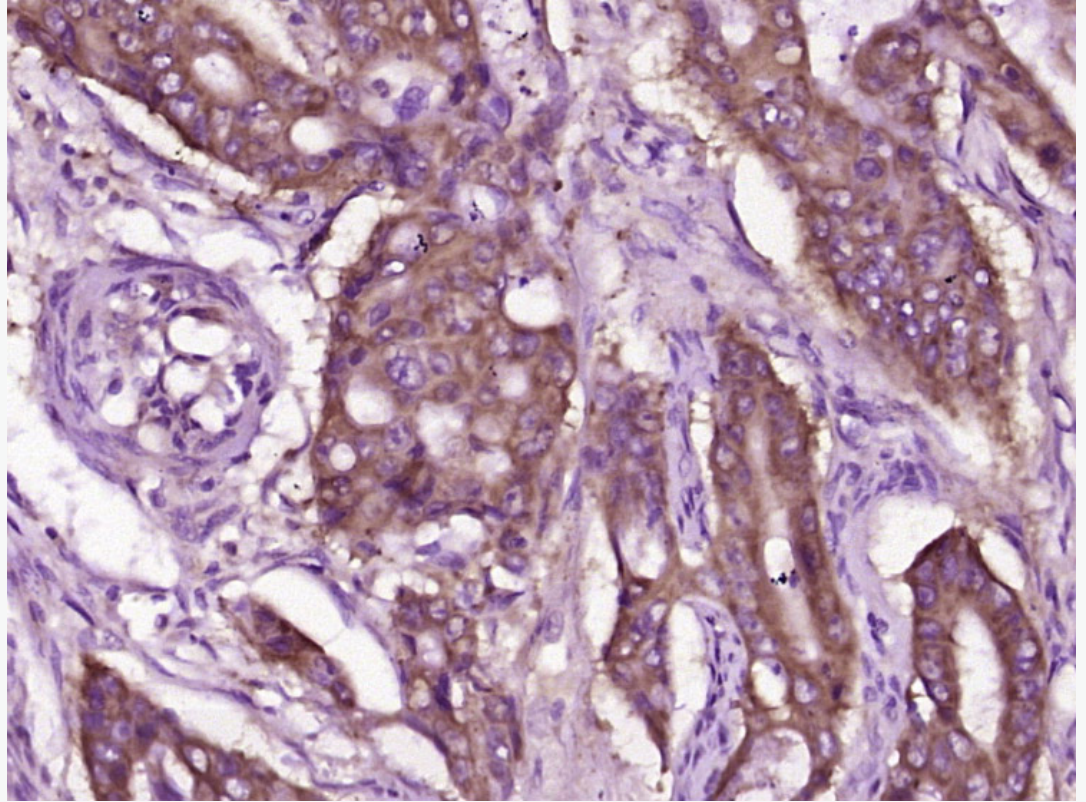
[Unigene: 632177](#) Human

[Unigene: 228797](#) Mouse

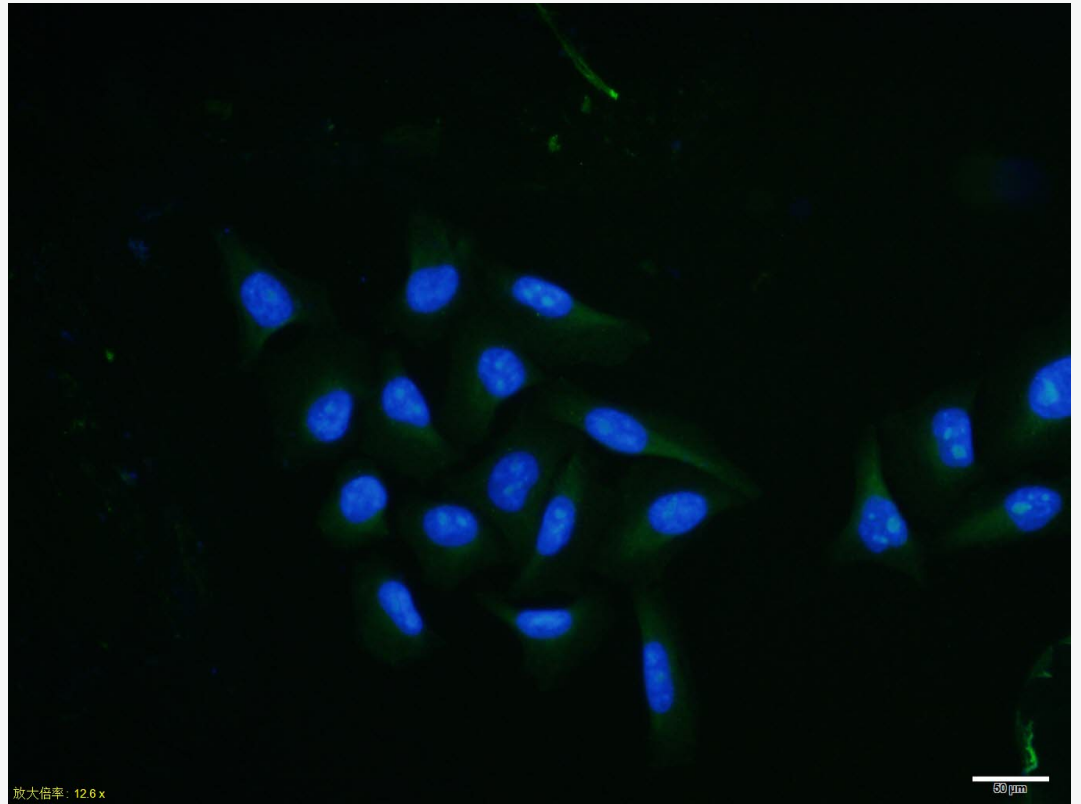
[Unigene: 10028](#) Rat

LRP 或称 MVP(Major vault protein)为肺耐药相关蛋白。其耐药机制与该蛋白质参与 The nucleus-浆的运输有关。他在正常细胞有广泛分布，对多种药物耐药的癌细胞呈过度表达，亦属多药耐药 (MDR)中的一种表型，可表达于许多 Tumour 组织中，阳性者预示对化疗不敏感，主要用于各种恶性 Tumour 的研究。

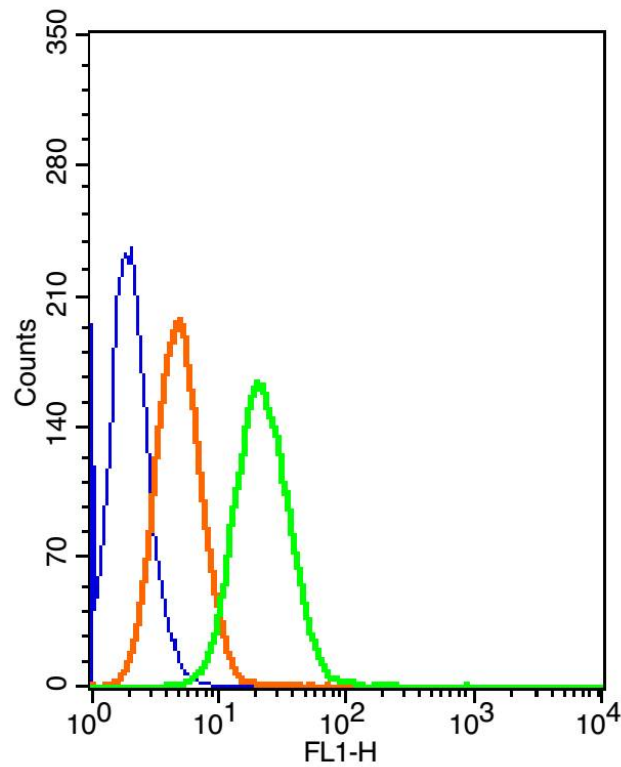
**Product
Picture**



Paraformaldehyde-fixed, paraffin embedded (Human colon cancer); Antigen retrieval by boiling in sodium citrate buffer (pH6.0) for 15min; Block endogenous peroxidase by 3% hydrogen peroxide for 20 minutes; Blocking buffer (normal goat serum) at 37°C for 30min; Antibody incubation with (LRP/MVP) Polyclonal Antibody, Unconjugated (SL0661R) at 1:400 overnight at 4°C, followed by operating according to SP Kit(Rabbit) (sp-0023) instructions and DAB staining.



Hela cell; 4% Paraformaldehyde-fixed; Triton X-100 at room temperature for 20 min; Blocking buffer (normal goat serum, C-0005) at 37°C for 20 min; Antibody incubation with (LRP/MVP) polyclonal Antibody, Unconjugated (SL0661R) 1:100, 90 minutes at 37°C; followed by a conjugated Goat Anti-Rabbit IgG antibody at 37°C for 90 minutes, DAPI (blue, C02-04002) was used to stain the cell nuclei.



The figure annotation:

The blue histogram is unstained cells.

The Orange histogram is cells stained with Rabbit IgG/FITC (SL0295P-FITC)

The green histogram is cells stained with Rabbit Anti-LRP/MVP/FITC Conjugated antibody (SL0661R-FITC).

Controls

Positive control: HepG 2 cells

Isotype control: Cell lines treated with Rabbit IgG/FITC (SL0295P-FITC) instead of the primary antibody to confirm that primary antibody binding is specific. 2 μ g in 1 00 μ L 1



SunLong Biotech Co.,LTD
Tel: 0086-571-56623320 Fax:0086-571-56623318
E-mail:sales@sunlongbiotech.com
www.sunlongbiotech.com

X PBS containing 0.5% BSA.