

Rabbit Anti-CD8 antibody

SL0648R

Product Name CD8

Chinese Name CD8 抗体

Alias CD8 antigen, alpha polypeptide (p32); CD8a; CD8a antigen; CD8a molecule; CD8A_MOUSE; CD8A_HUMAN; Leu2; Leu2 T lymphocyte antigen; MAL; OKT8 T cell antigen; p32; T cell antigen Leu2; T cell co receptor; T-cell surface glycoprotein CD8 alpha chain; T-lymphocyte differentiation antigen T8/Leu-2; T8 T cell antigen.

Research Area Cell biology immunology Stem cells Cell Surface Molecule Cell type markers lymphocyte t-lymphocyte

Immunogen Species Rabbit

Clonality Polyclonal

React Species Human, Mouse,

Applications Flow-Cyt=2ug/Test (Paraffin sections need antigen repair)
not yet tested in other applications.
optimal dilutions/concentrations should be determined by the end user.

Theoretical molecular weight 27kDa

Detection molecular weight 32 kDa

Cellular localization The cell membrane

Form Liquid

Concentration 1mg/ml

immunogen KLH conjugated synthetic peptide derived from mouse CD8: 51-150/247
<Extracellular>

Lsotype IgG

Purification affinity purified by Protein A

Buffer Solution 1M TBS(pH7.4) with 1% BSA, 3% Proclin300 and 50% Glycerol.

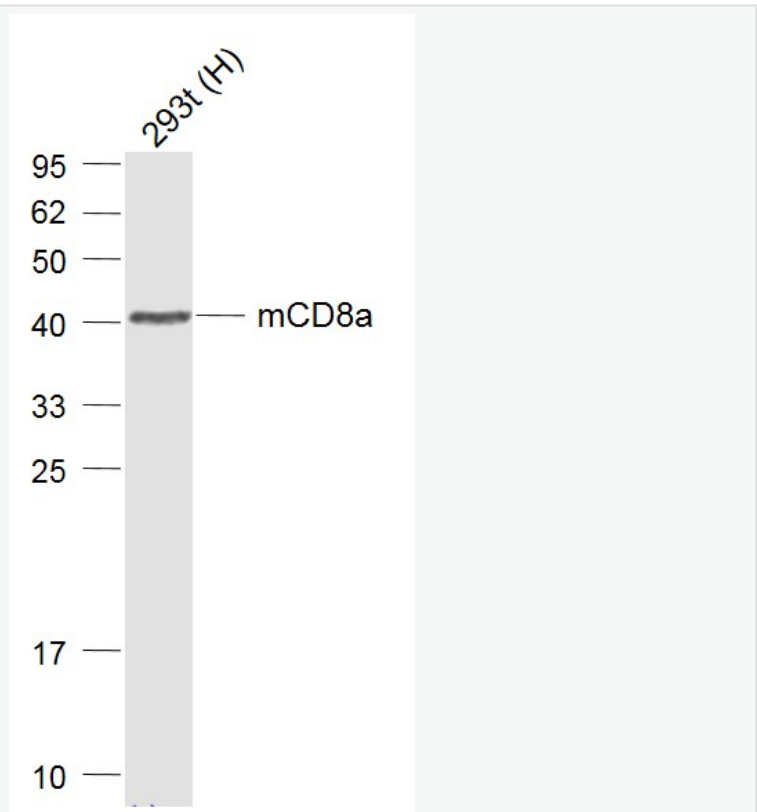


Storage	Shipped at 4°C. Store at -20 °C for one year. Avoid repeated freeze/thaw cycles.
Attention	This product as supplied is intended for research use only, not for use in human, therapeutic or diagnostic applications.
PubMed	PubMed The CD8 antigen is a cell surface glycoprotein found on most cytotoxic T lymphocytes that mediates efficient cell-cell interactions within the immune system. The CD8 antigen acts as a coreceptor with the T-cell receptor on the T lymphocyte to recognize antigens displayed by an antigen presenting cell in the context of class I MHC molecules. The coreceptor functions as either a homodimer composed of two alpha chains or as a heterodimer composed of one alpha and one beta chain. Both alpha and beta chains share significant homology to immunoglobulin variable light chains. This gene encodes the CD8 alpha chain. Multiple transcript variants encoding different isoforms have been found for this gene. [provided by RefSeq, Nov 2011]. Function: Identifies cytotoxic/suppressor T-cells that interact with MHC class I bearing targets. CD8 is thought to play a role in the process of T-cell mediated killing. CD8 alpha chains binds to class I MHC molecules alpha-3 domains. Subunit: In general heterodimer of an alpha and a beta chain linked by two disulfide bonds. Can also form homodimers.
Product Detail	Subcellular Location: Membrane; Single-pass type I membrane protein. Similarity: Contains 1 Ig-like V-type (immunoglobulin-like) domain. SWISS: P01731 Gene ID: 12525 Database links: Entrez Gene: 925 Human Entrez Gene: 12525 Mouse

[SwissProt: P01732](#) Human

[SwissProt: P01731](#) Mouse

**Product
Picture**



Sample:

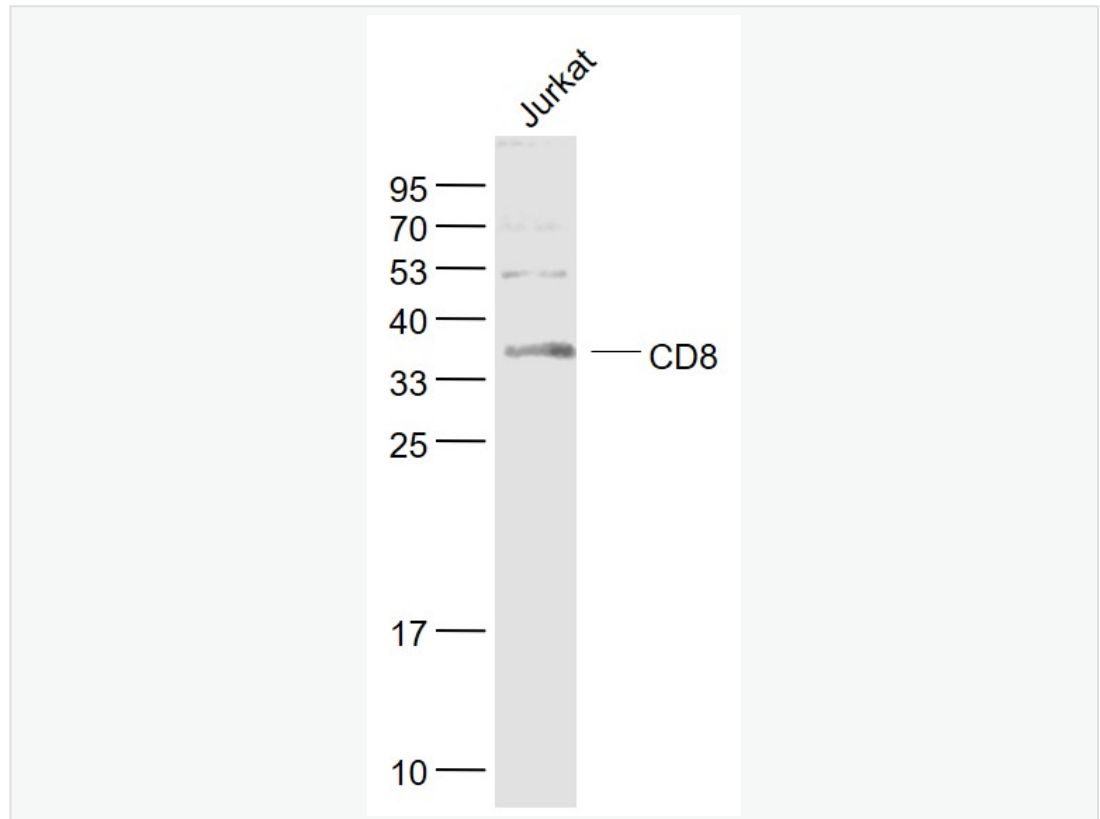
Lane 1: mCD8a overexpression 293T Lysate at 8 ug

Primary: Anti-CD8a (SL0648R) at 1/1000 dilution

Secondary: IRDye800CW Goat Anti-Rabbit IgG at 1/20000 dilution

Predicted band size: 35-42 kD

Observed band size: 41 kD



Sample:

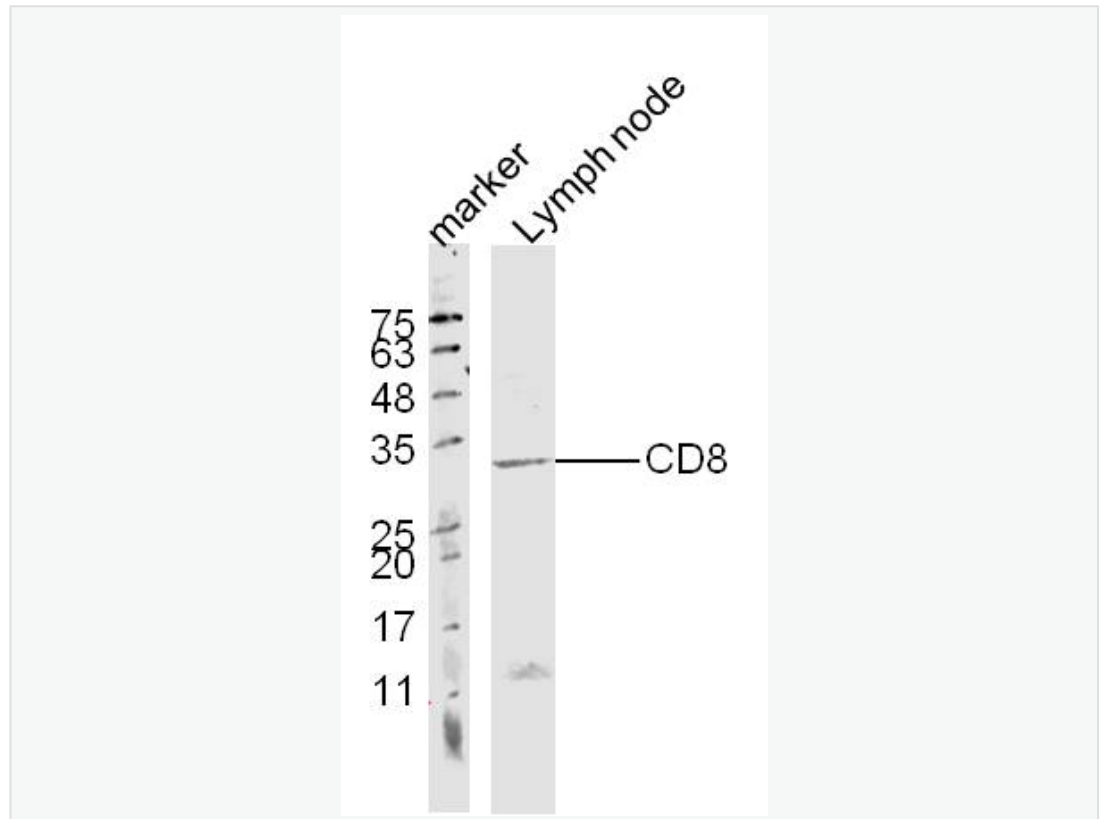
Jurkat(Human) Cell Lysate at 30 ug

Primary: Anti- CD8 (SL0648R) at 1/1000 dilution

Secondary: IRDye800CW Goat Anti-Rabbit IgG at 1/20000 dilution

Predicted band size: 27 kD

Observed band size: 36 kD



Sample:Lymph node(Mouse) Lysate at 30 ug

Primary: Anti-CD8(SL0648R) at 1/300 dilution

Secondary: IRDye800CW Goat Anti-Rabbit IgG at 1/20000 dilution

Predicted band size: 27 kD

Observed band size: 32 kD

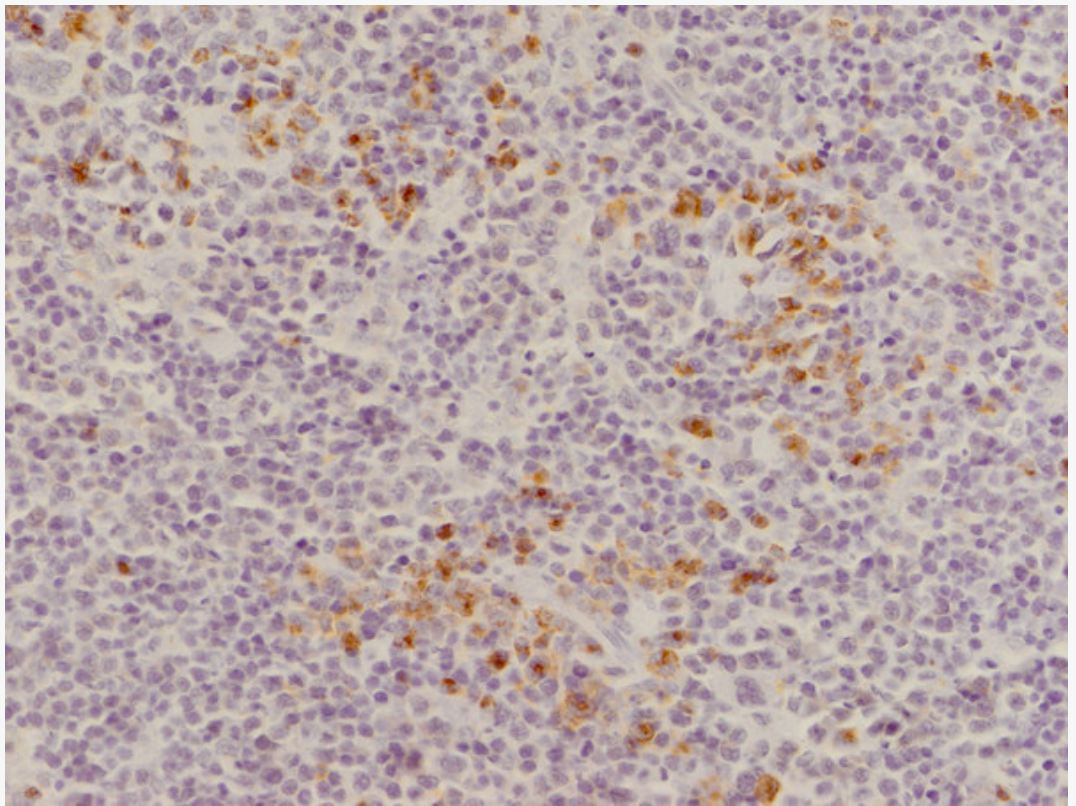


Image kindly submitted by Amy Beck as part of the free sample program.
Formalin-fixed and paraffin embedded mouse spleen labeled with Rabbit
Anti-CD8 Polyclonal Antibody, Unconjugated (SL0648R) at 1:250.