

## Rabbit Anti-Rat secretory IgA antibody

SL0645R

<b>Product Name</b>	Rat secretory IgA
<b>Chinese Name</b>	分泌型免疫球蛋白 A 抗体
<b>Alias</b>	Rat secretory IgA; Rat IgA
<b>Research Area</b>	immunology
<b>Immunogen Species</b>	Rabbit
<b>Clonality</b>	Polyclonal
<b>React Species</b>	Rat, WB=1:500-2000
<b>Applications</b>	not yet tested in other applications. optimal dilutions/concentrations should be determined by the end user.
<b>Cellular localization</b>	Secretory protein
<b>Form</b>	Liquid
<b>Concentration</b>	1mg/ml
<b>immunogen</b>	Rat secretory IgA
<b>Lsotype</b>	IgG
<b>Purification</b>	affinity purified by Protein A
<b>Buffer Solution</b>	1M TBS(pH7.4) with 1% BSA, 3% Proclin300 and 50% Glycerol.
<b>Storage</b>	Shipped at 4°C. Store at -20 °C for one year. Avoid repeated freeze/thaw cycles.
<b>Attention</b>	This product as supplied is intended for research use only, not for use in human, therapeutic or diagnostic applications.
<b>PubMed</b>	<a href="#">PubMed</a>
<b>Product Detail</b>	IgA (immunoglobulin A) is a glycosylated protein of 160 kDa and is produced as a monomer or as a J chain linked dimer. Monomeric IgA constitutes 5-15 % of the serum immunoglobulins whereas dimeric IgA is localized to mucosa surfaces such as saliva, gastrointestinal secretion, bronchial fluids and milk. Mucosal IgA plays a major role in host defence by neutralising infectious agents at mucosal surfaces. The production is usually local and antigen specific IgA producing B cells can be found in regions under the lamina

propria where they mature into dimeric IgA producing plasma cells. IgA deficiency is the most common immunodeficiency that may affect both serum and mucosal produced IgA.

**SWISS:**

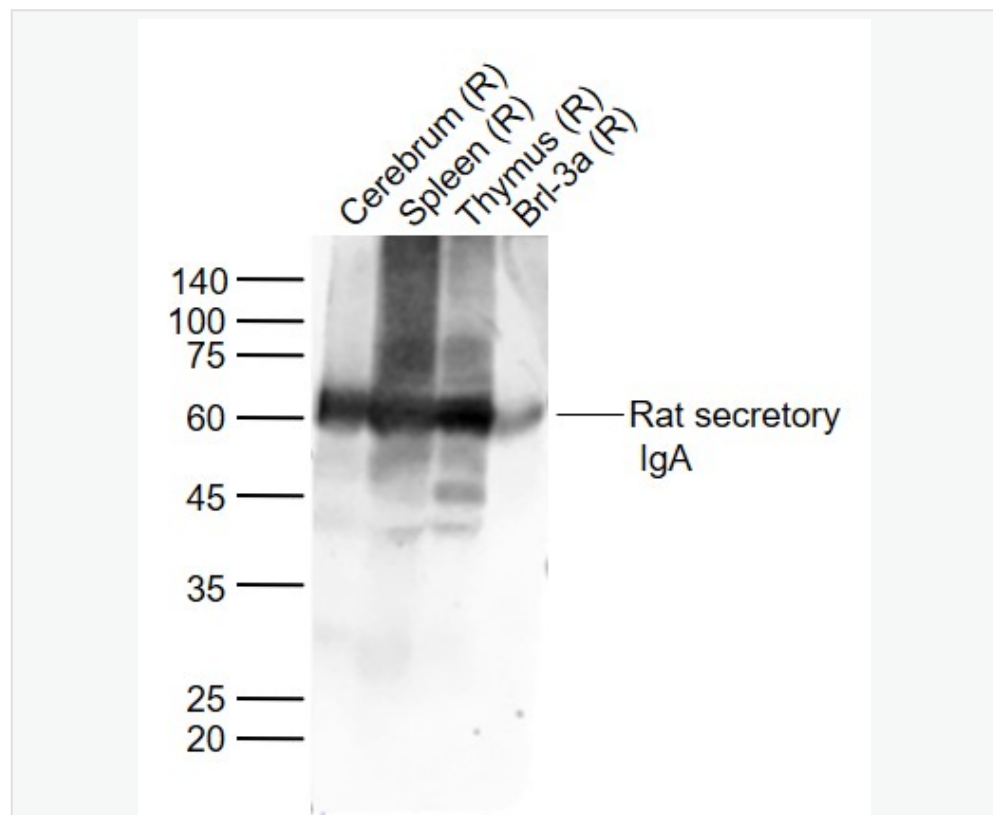
N/A

**Gene ID:**

N/A

其他 Chinese Name: 大鼠 IgA, 大鼠分泌型 IgA, 大鼠分泌型免疫球蛋白 A

**Product Picture**



**Sample:**

Lane 1: Cerebrum (Rat) Tissue Lysate at 40 ug

Lane 2: Spleen (Rat) Tissue Lysate at 40 ug

Lane 3: Thymus (Rat) Tissue Lysate at 40 ug



Lane 4: Brl-3a (Rat) Cell Lysate at 30 ug

Primary: Anti-Rat secretory IgA (SL0645R) at 1/500 dilution

Secondary: IRDye800CW Goat Anti-Rabbit IgG at 1/20000 dilution

Observed band size: 62 kD