

Rabbit Anti-MAdCAM-1 antibody

SL0642R

Product Name MAdCAM-1

Chinese Name 粘膜血管定居因子抗体

Alias Mucosal addressin cellular adhesion molecule-1; Addressin mucosal; hMAdCAM 1; MACAM1; Mucosal addressin cell adhesion molecule 1; Mucosal vascular addressin cell adhesion molecule 1; MADCA_RAT.

Research Area Tumour Cardiovascular

Immunogen Species Rabbit

Clonality Polyclonal

React Species Human, Mouse, (predicted: Rat,)

Applications WB=1:500-2000,IHC-P=1:100-500,IHC-F=1:100-500,IF=1:100-500 (Paraffin sections need antigen repair)
not yet tested in other applications.
optimal dilutions/concentrations should be determined by the end user.

Theoretical molecular weight 40kDa

Cellular localization The cell membrane

Form Liquid

Concentration 1mg/ml

immunogen KLH conjugated synthetic peptide derived from rat MAdCAM-1: 151-250/394

Lsotype IgG

Purification affinity purified by Protein A

Buffer Solution 1M TBS(pH7.4) with 1% BSA, 3% Proclin300 and 50% Glycerol.

Storage Shipped at 4°C. Store at -20 °C for one year. Avoid repeated freeze/thaw cycles.

Attention This product as supplied is intended for research use only, not for use in human, therapeutic or diagnostic applications.

PubMed [PubMed](#)

The protein encoded by this gene is an endothelial cell adhesion molecule that interacts preferentially with the leukocyte beta7 integrin LPAM-1 (alpha4beta7), L-selectin, and VLA-4 (alpha4beta1) on myeloid cells to direct leukocytes into mucosal and inflamed tissues. It is a member of the immunoglobulin family and is similar to ICAM1 and VCAM1. At least seven alternatively spliced transcripts encoding different protein isoforms have been found for this gene, but the full-length nature of some variants has not been determined. [provided by RefSeq, Jul 2008]

Function:

Cell adhesion leukocyte receptor expressed by mucosal venules, helps to direct lymphocyte traffic into mucosal tissues including the Peyer patches and the intestinal lamina propria. It can bind both the integrin alpha-4/beta-7 and L-selectin, regulating both the passage and retention of leukocytes (By similarity).

Subunit:

Homodimer (Probable).

Subcellular Location:

Membrane; Single-pass type I membrane protein.

Tissue Specificity:

Detected in Peyer patches and mesenteric lymph nodes but not in spleen.

Similarity:

Contains 3 Ig-like (immunoglobulin-like) domains.

SWISS:

O70540

Gene ID:

54266

Database links:

[Entrez Gene: 17123](#) Mouse

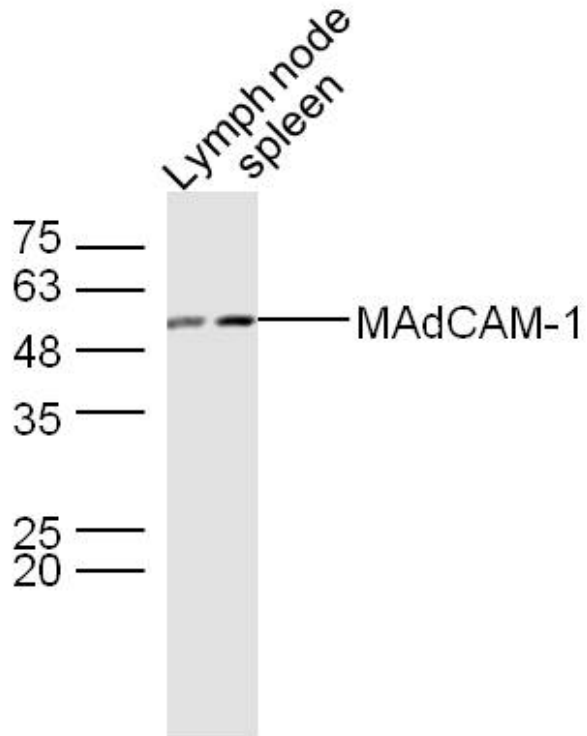
[SwissProt: Q61826](#) Mouse

[Unigene: 391556](#) Mouse

**Product
Detail**

MAdCAM-1 (粘膜血管定居因子或黏膜地址素细胞黏附分子)、CD44 等均参与癌症和 Tumour 细胞与血管内皮的相互作用, 与癌症和 Tumour 细胞一起穿过血管内皮而进入血管内, 参与血行播散转移。

**Product
Picture**



Sample:

Lymph node (Mouse) Lysate at 30 ug

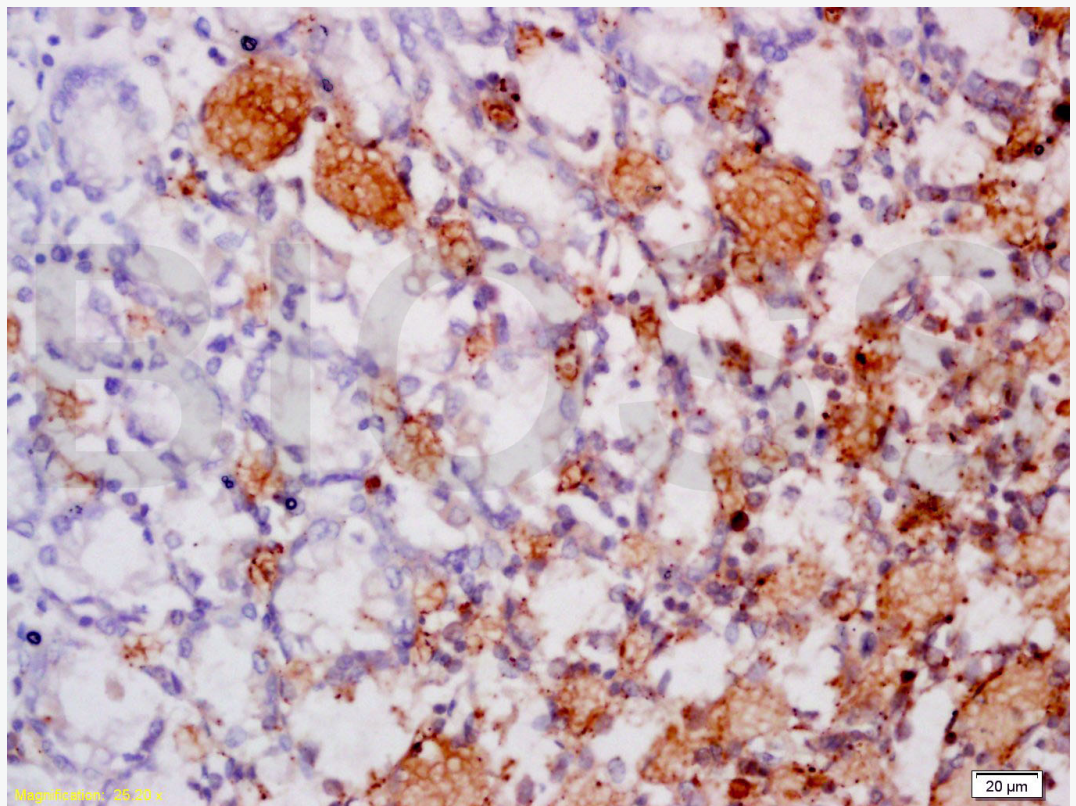
Spleen (Mouse) Lysate at 30 ug

Primary: Anti- MAdCAM-1 (SL0642R) at 1/300 dilution

Secondary: IRDye800CW Goat Anti-Rabbit IgG at 1/20000 dilution

Predicted band size: 40 kD

Observed band size: 50 kD



Tissue/cell: human gastric carcinoma; 4% Paraformaldehyde-fixed and paraffin-embedded;

Antigen retrieval: citrate buffer (1M, pH 6.0), Boiling bathing for 15min; Block endogenous peroxidase by 3% Hydrogen peroxide for 30min; Blocking buffer (normal goat serum,C-0005) at 37°C for 20 min;

Incubation: Anti-MAdCAM-1 Polyclonal Antibody, Unconjugated(SL0642R) 1:200, overnight at 4°C, followed by conjugation to the secondary antibody(SP-0023) and DAB(C-0010) staining