

## Rabbit Anti-Dopamine beta Hydroxylase antibody

SL0596R

**Product Name** Dopamine beta Hydroxylase

**Chinese Name** 多巴胺  $\beta$  羟化酶抗体

**Alias** DBH; DBM; Dopamine beta hydroxylase; Dopamine-Beta-Hydroxylase; Dopamine beta monooxygenase; DOPO\_RAT; DOPO\_HUMAN.

**Research Area** Tumour Neurobiology Synthesis and Degradation

**Immunogen Species** Rabbit

**Clonality** Polyclonal

**React Species** Human,Rat(predicted:Mouse)

WB=1:500-2000,IHC-P=1:100-500,IHC-F=1:100-500,IF=1:100-500,Flow-Cyt=1ug/Test  
(Paraffin sections need antigen repair)

**Applications** not yet tested in other applications.  
optimal dilutions/concentrations should be determined by the end user.

**Theoretical molecular weight** 70kDa

**Cellular localization** cytoplasmic The cell membrane

**Form** Liquid

**Concentration** 1mg/ml

**immunogen** KLH conjugated synthetic peptide derived from human DBH: 471-550/621

**Lsotype** IgG

**Purification** affinity purified by Protein A

**Buffer Solution** Human,Rat(predicted:Mouse)1M TBS(pH7.4) with 1% BSA,

Human,Rat(predicted:Mouse)3% Proclin300 and 50% Glycerol.

**Storage** Shipped at 4°C. Store at -20 °C for one year. Avoid repeated freeze/thaw cycles.

**Attention** This product as supplied is intended for research use only, not for use in human, therapeutic or diagnostic applications.

**PubMed** [PubMed](#)

**Product  
Detail**

Dopamine-beta-Hydroxylase (DBH), Dopamine can be transformed into Noradrenalin. Conversion of dopamine to noradrenaline. [SUBUNIT] Homotetramer composed of two non-covalently bound disulfide-linked dimers. [SUBCELLULAR LOCATION] Soluble dopamine beta-hydroxylase: Cytoplasmic vesicle, secretory vesicle lumen. Cytoplasmic vesicle, secretory vesicle, chromaffin granule lumen. Cytoplasmic vesicle, secretory vesicle membrane; Single-pass type II membrane protein. Cytoplasmic vesicle, secretory vesicle, chromaffin granule membrane; Single-pass type II membrane protein (Potential). Belongs to the copper type II ascorbate-dependent monooxygenase family.

**Function:**

Conversion of dopamine to noradrenaline.

**Subunit:**

Homotetramer composed of two non-covalently bound disulfide-linked dimers (By similarity).

**Subcellular Location:**

Soluble dopamine beta-hydroxylase: Cytoplasmic vesicle, secretory vesicle lumen (By similarity). Cytoplasmic vesicle, secretory vesicle, chromaffin granule lumen (By similarity).

Cytoplasmic vesicle, secretory vesicle membrane; Single-pass type II membrane protein (By similarity). Cytoplasmic vesicle, secretory vesicle, chromaffin granule membrane; Single-pass type II membrane protein (By similarity).

**Tissue Specificity:**

Chromaffin granules of the adrenal medulla and synaptic vesicles of the sympathetic nervous system.

**Similarity:**

Belongs to the copper type II ascorbate-dependent monooxygenase family. Contains 1 DOMON domain.

**SWISS:**

P09172

**Gene ID:**

1621

**Database links:**

[Entrez Gene: 280758](#) Cow

[Entrez Gene: 1621](#) Human

[Entrez Gene: 13166](#) Mouse

[Entrez Gene: 25699](#) Rat

[Omim: 223360](#) Human

[Omim: 609312](#) Human

[SwissProt: P15101](#) Cow

[SwissProt: P09172](#) Human

[SwissProt: Q64237](#) Mouse

[SwissProt: Q05754](#) Rat

[Unigene: 223858](#) Human

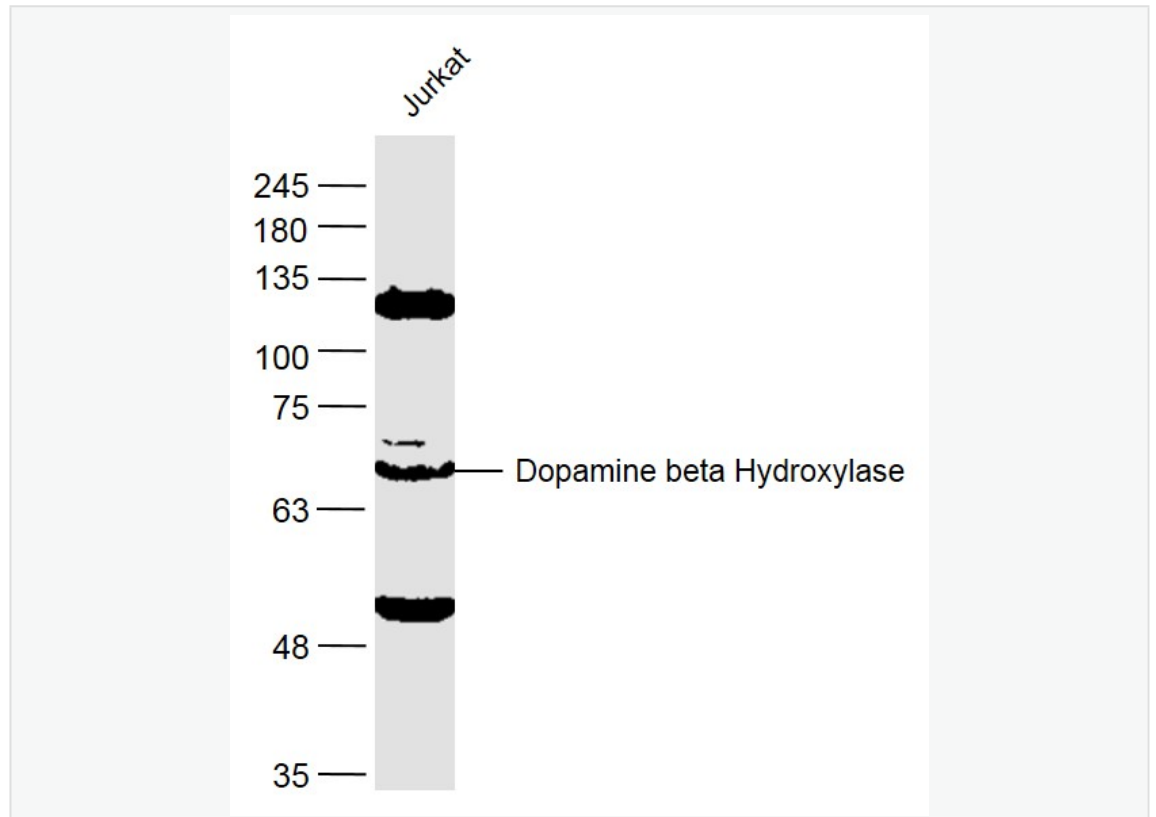
[Unigene: 591890](#) Human

[Unigene: 167781](#) Mouse

[Unigene: 87166](#) Rat

Dopamine- $\beta$ -Hydroxylase (DBH) —多巴胺  $\beta$  羟化酶。可以将多巴胺转化成去甲肾上腺素。是肾上腺素能神经元的标志。

**Product  
Picture**



Sample:

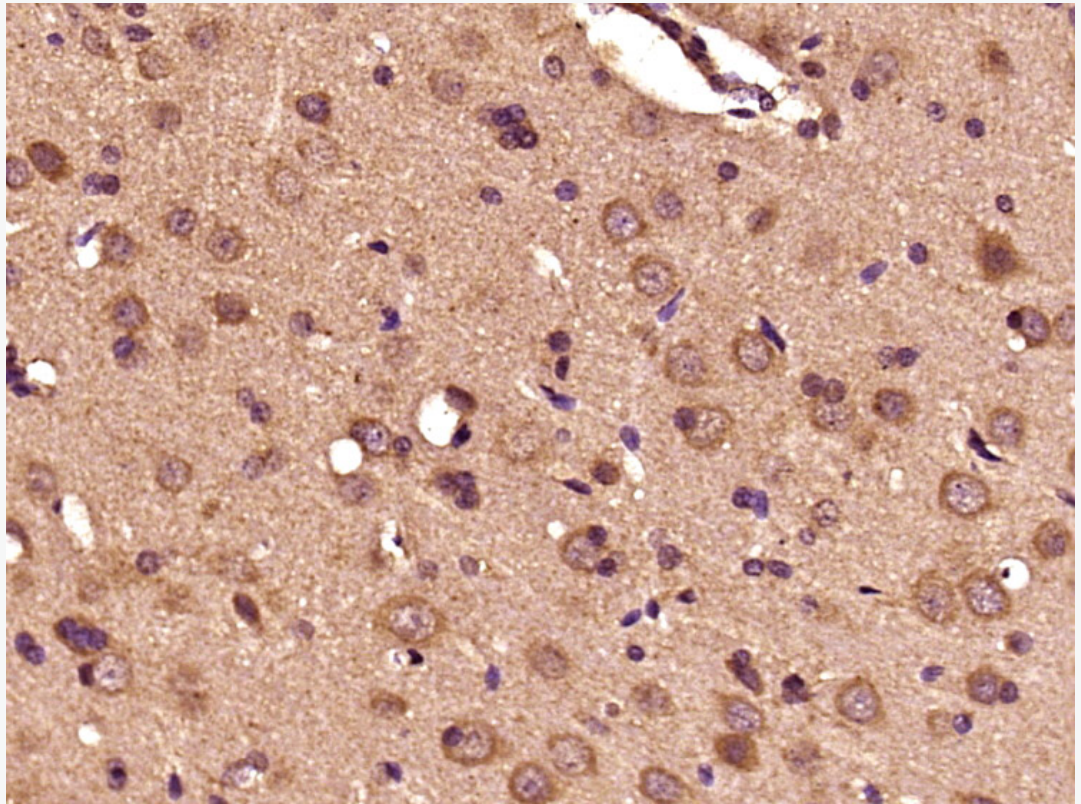
Jurkat (Human) Cell Lysate at 40 ug

Primary: Anti-Dopamine beta Hydroxylase (SL0596R) at 1/300 dilution

Secondary: IRDye800CW Goat Anti-Rabbit IgG at 1/20000 dilution

Predicted band size: 70 kD

Observed band size: 70 kD



Paraformaldehyde-fixed, paraffin embedded (Rat brain); Antigen retrieval by boiling in sodium citrate buffer (pH6.0) for 15min; Block endogenous peroxidase by 3% hydrogen peroxide for 20 minutes; Blocking buffer (normal goat serum) at 37°C for 30min; Antibody incubation with (DOPO) Polyclonal Antibody, Unconjugated (SL0596R) at 1:400 overnight at 4°C, followed by operating according to SP Kit(Rabbit) (sp-0023) instructions and DAB staining.