

## Rabbit Anti-CYGB antibody

SL0590R

<b>Product Name</b>	CYGB
<b>Chinese Name</b>	细胞球蛋白抗体
<b>Alias</b>	Cytoglobin; HGB; STAP; Histoglobin; HGb; cell activation-associated protein; CYGB_HUMAN.
<b>Research Area</b>	Cell biology
<b>Immunogen Species</b>	Rabbit
<b>Clonality</b>	Polyclonal
<b>React Species</b>	Human, Rat, (predicted: Mouse, Chicken, Dog, Cow, Horse, ) IHC-P=1:100-500,IHC-F=1:100-500,IF=1:100-500 (Paraffin sections need antigen repair)
<b>Applications</b>	not yet tested in other applications. optimal dilutions/concentrations should be determined by the end user.
<b>Theoretical molecular weight</b>	21kDa
<b>Cellular localization</b>	cytoplasmic
<b>Form</b>	Liquid
<b>Concentration</b>	1mg/ml
<b>immunogen</b>	KLH conjugated synthetic peptide derived from human cytoglobin: 87-132/190
<b>Lsotype</b>	IgG
<b>Purification</b>	affinity purified by Protein A
<b>Buffer Solution</b>	1M TBS(pH7.4) with 1% BSA, 3% Proclin300 and 50% Glycerol.
<b>Storage</b>	Shipped at 4°C. Store at -20 °C for one year. Avoid repeated freeze/thaw cycles.
<b>Attention</b>	This product as supplied is intended for research use only, not for use in human, therapeutic or diagnostic applications.
<b>PubMed</b>	<a href="#">PubMed</a>
<b>Product Detail</b>	This gene encodes a globin protein found in vertebrate cells. The encoded protein is described as a hexacoordinate hemoglobin which binds ligand differently from the

pentacoordinate hemoglobins involved in oxygen transport, and may be involved in protection during oxidative stress. This gene is located on chromosome 17 in the same region as a retinal gene which is mutated in progressive rod-cone degeneration, but in the opposite orientation. [provided by RefSeq, Jan 2012]

**Function:**

May have a protective function during conditions of oxidative stress. May be involved in intracellular oxygen storage or transfer.

**Subunit:**

Homodimer; disulfide-linked.

**Subcellular Location:**

Cytoplasm.

**Tissue Specificity:**

Ubiquitously expressed. Highest expression in heart, stomach, bladder and small intestine.

**Similarity:**

Belongs to the globin family.

**SWISS:**

Q8WWM9

**Gene ID:**

114757

**Database links:**

[Entrez Gene: 609341](#) Dog

[Entrez Gene: 114757](#) Human

[Entrez Gene: 114886](#) Mouse

[Entrez Gene: 170520](#) Rat

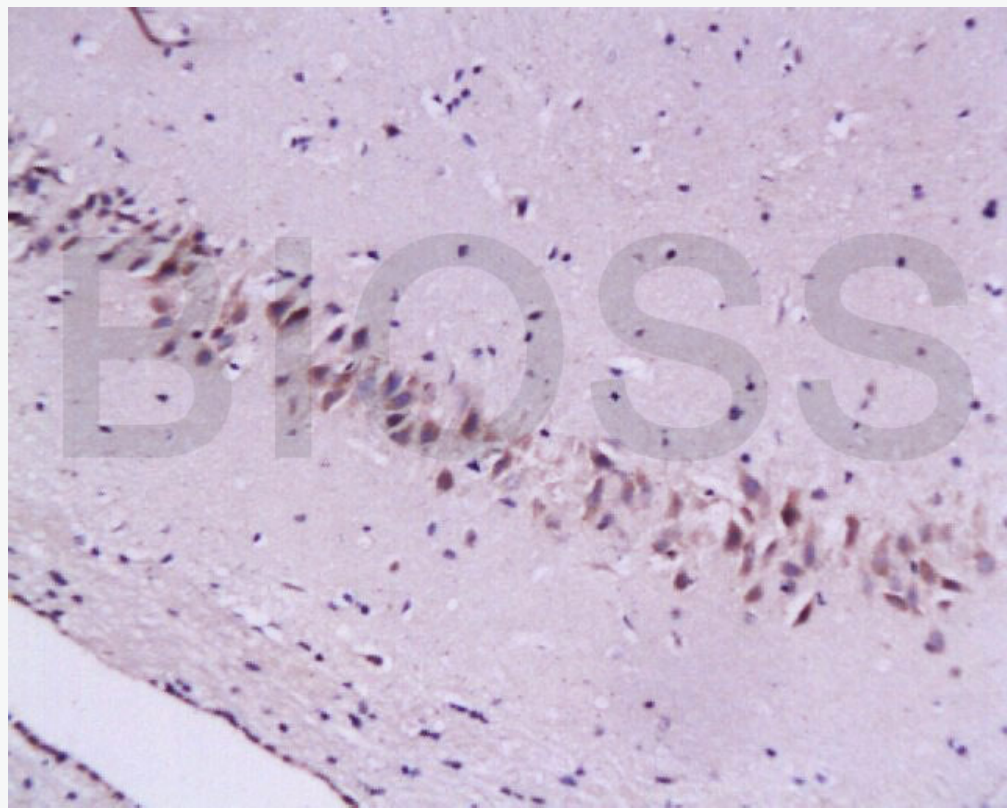
[SwissProt: Q8WWM9](#) Human

[SwissProt: Q9CX80](#) Mouse

[SwissProt: Q921A4](#) Rat

细胞球蛋白 Cygb 是最近发现的脊椎动物球蛋白超家族的一员,在体内分布

广泛。有学者认为：Cyg<sub>b</sub> 的确切功能尚不十分清楚,目前主要有携氧与储氧、氧感受器、活性氧基团和 NO 的清道夫、NADH 氧化酶或过氧化氢酶样作用和参与胶原形成等假说。



**Product  
Picture**

Tissue/cell: rat brain tissue; 4% Paraformaldehyde-fixed and paraffin-embedded;

Antigen retrieval: citrate buffer ( 1M, pH 6.0 ), Boiling bathing for 15min;

Block endogenous peroxidase by 3% Hydrogen peroxide for 30min;

Blocking buffer (normal goat serum,C-0005) at 37°C for 20 min;

Incubation: Anti-Cygb Polyclonal Antibody, Unconjugated(SL0590R)

1:200, overnight at 4°C, followed by conjugation to the secondary antibody(SP-0023) and DAB(C-0010) staining



SunLong Biotech Co.,LTD  
Tel: 0086-571-56623320 Fax:0086-571-56623318  
E-mail:sales@sunlongbiotech.com  
www.sunlongbiotech.com

---