

## Rabbit Anti-IL2RA/CD25 antibody

SL0577R

<b>Product Name</b>	IL2RA/CD25
<b>Chinese Name</b>	白介素 2 受体 a 链/IL-2RA 抗体
<b>Alias</b>	Interleukin 2 receptor alpha chain; CD 25; CD25 antigen; IDDM10; IL 2 RA; IL 2 receptor alpha subunit; IL2 RA; IL-2RA; IL2R; IL2RAC; Interleukin 2 Receptor Alpha; Interleukin 2 receptor alpha chain; Interleukin 2 receptor; Ly43; p55; T Cell Growth Factor Receptor; TAC Antigen; TCGFR; IL2RA_MOUSE.
<b>Research Area</b>	Tumour immunology The cell membrane 受体 lymphocyte t-lymphocyte b-lymphocyte
<b>Immunogen Species</b>	Rabbit
<b>Clonality</b>	Polyclonal
<b>React Species</b>	Human, Mouse, (predicted: Rat, ) WB=1:500-2000,Flow-Cyt=0.2ug /test
<b>Applications</b>	not yet tested in other applications. optimal dilutions/concentrations should be determined by the end user.
<b>Theoretical molecular weight</b>	28kDa
<b>Detection molecular weight</b>	55kDa
<b>Cellular localization</b>	The cell membrane
<b>Form</b>	Liquid
<b>Concentration</b>	1mg/ml
<b>immunogen</b>	KLH conjugated synthetic peptide derived from mouse CD25: 201-268/268
<b>Lsotype</b>	IgG
<b>Purification</b>	affinity purified by Protein A
<b>Buffer Solution</b>	1M TBS(pH7.4) with 1% BSA, 3% Proclin300 and 50% Glycerol.
<b>Storage</b>	Shipped at 4°C. Store at -20 °C for one year. Avoid repeated freeze/thaw cycles.
<b>Attention</b>	This product as supplied is intended for research use only, not for use in

human, therapeutic or diagnostic applications.

## PubMed

### [PubMed](#)

The interleukin 2 (IL2) receptor alpha (IL2RA) and beta (IL2RB) chains, together with the common gamma chain (IL2RG), constitute the high-affinity IL2 receptor. Homodimeric alpha chains (IL2RA) result in low-affinity receptor, while homodimeric beta (IL2RB) chains produce a medium-affinity receptor. Normally an integral-membrane protein, soluble IL2RA has been isolated and determined to result from extracellular proteolysis. Alternately-spliced IL2RA mRNAs have been isolated, but the significance of each is presently unknown. Mutations in this gene are associated with interleukin 2 receptor alpha deficiency.[provided by RefSeq, Nov 2009].

### **Function:**

Receptor for interleukin-2.

### **Subunit:**

Non-covalent dimer of an alpha and a beta subunit. IL2R exists in 3 different forms: a high affinity dimer, an intermediate affinity monomer (beta subunit), and a low affinity monomer (alpha subunit). The high and intermediate affinity forms also associate with a gamma subunit.

## Product Detail

### **Subcellular Location:**

Membrane; Single-pass type I membrane protein.

### **Similarity:**

Contains 2 Sushi (CCP/SCR) domains.

### **SWISS:**

P01590

### **Gene ID:**

16184

### **Database links:**

[Entrez Gene: 3559](#) Human

[Entrez Gene: 16184](#) Mouse

[SwissProt: P01589](#) Human

[SwissProt: P01590](#) Mouse

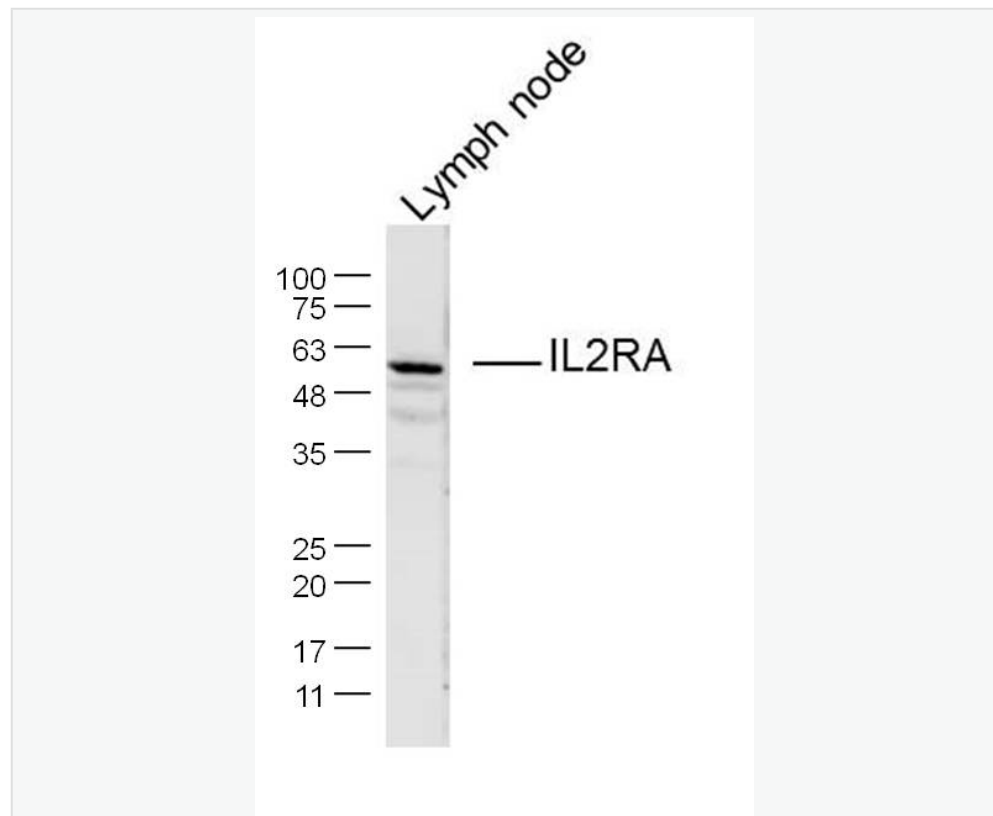
[Unigene: 231367](#) Human

[Unigene: 915](#) Mouse

[Omim: 147730](#) Human

CD25 抗原是分子量为 55KD 的单链 glycoprotein, 故又称白介素 2 受体。主要用于与淋巴样 Tumour、自身免疫性疾病及同种异体移植排斥反应等疾病的研究。CD25 是白介素受体的  $\alpha$  亚单位, 主要表达于活化的 T 细胞, 在活化的 B 细胞、NK 细胞和巨噬细胞也有一定的表达。该抗体主要用于标记活化的 lymphocyte。

**Product Picture**



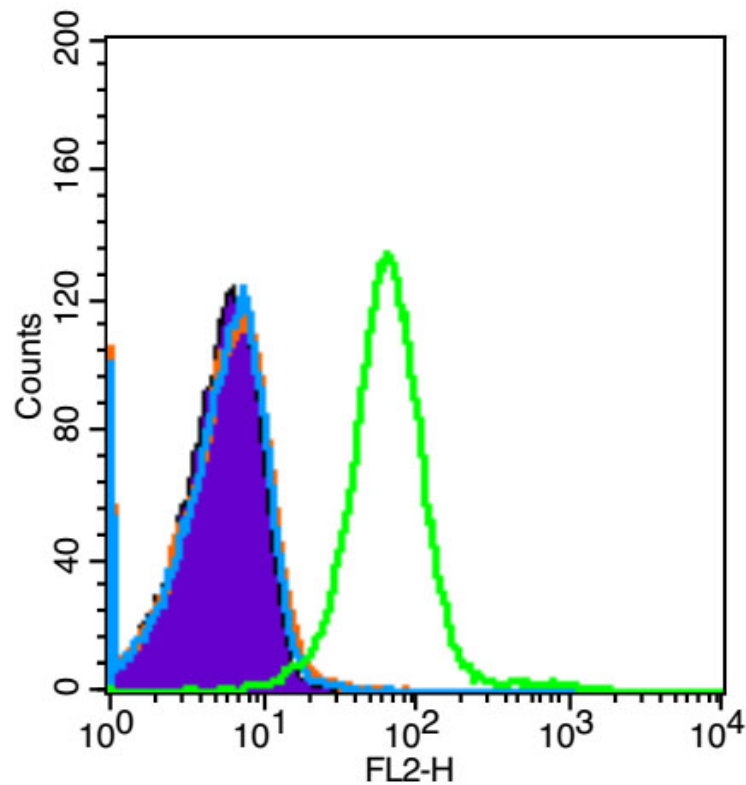
Sample: Lymph node (Mouse) Lysate at 40 ug

Primary: Anti-IL2RA (SL0577R) at 1/300 dilution

Secondary: IRDye800CW Goat Anti-Rabbit IgG at 1/10000 dilution

Predicted band size: 28 kD

Observed band size: 55 kD



Blank control (Black line): Jurkat (Black).

Primary Antibody (green line): Rabbit Anti-IL2RA/CD25 antibody  
(SL3152R)

Dilution:  $3\mu\text{g}/10^6$  cells;

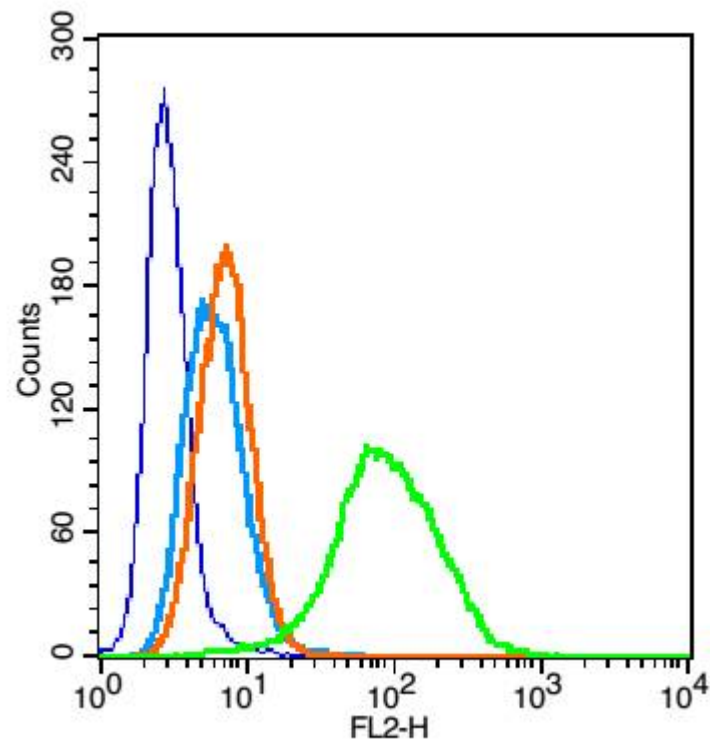
Isotype Control Antibody (orange line): Rabbit IgG .

Secondary Antibody (white blue line): Goat anti-rabbit IgG-PE

Dilution:  $1\mu\text{g}/\text{test}$ .

### Protocol

The cells were fixed with 4% PFA (10min at room temperature)and then were incubated in 5%BSA to block non-specific protein-protein interactions for 15 min at room temperature .Cells stained with Primary Antibody for 30 min at room temperature. The secondary antibody used for 40 min at room temperature. Acquisition of 20,000 events was performed.



Blank control: U937 (blue).

Primary Antibody:Rabbit Anti- CD25 antibody(SL0577R), Dilution:  
0.2 $\mu$ g in 100  $\mu$ L 1X PBS containing 0.5% BSA;

Isotype Control Antibody: Rabbit IgG(orange) ,used under the same conditions );

Secondary Antibody: Goat anti-rabbit IgG-PE(white blue), Dilution: 1:200 in 1 X PBS containing 0.5% BSA.

#### Protocol

The cells were fixed with 2% paraformaldehyde (10 min) . Primary antibody (SL0577R, 0.2 $\mu$ g /1x10<sup>6</sup> cells) were incubated for 30 min on the ice, followed by 1 X PBS containing 0.5% BSA + 1 0% goat serum (15 min) to block non-specific protein-protein interactions. Then the Goat Anti-rabbit IgG/PE antibody was added into the blocking buffer mentioned above to react with the primary antibody at 1/200 dilution for 30 min on ice. Acquisition of 20,000 events was performed.