

Rabbit Anti-Annexin A2 antibody

SL0576R

Product Name	Annexin A2
Chinese Name	膜粘连蛋白 II抗体
Alias	ANX 2; ANX2; ANX2L4; ANXA2; arylsulfatase B; CAL1H; Calpactin I heavy chain; calpactin I heavy polypeptide (p36); chromobindin 8; LIP2; Lipocortin II; LPC2; LPC2D; P36; P36 protein; PAP-IV; placental anticoagulant protein IV; Protein I; ANXA2_HUMAN; Annexin II; Annexin-2; Calpactin-1 heavy chain; Chromobindin-8; Placental anticoagulant protein IV.
Research Area	Tumour Cardiovascular Cell biology Signal transduction Apoptosis
Immunogen Species	Rabbit
Clonality	Polyclonal
React Species	Human,Mouse,Rat
Applications	WB=1:500-2000,ELISA=1:5000-10000 not yet tested in other applications. optimal dilutions/concentrations should be determined by the end user.
Theoretical molecular weight	36kDa
Cellular localization	cytoplasmic The cell membrane Extracellular matrix Secretory protein
Form	Liquid
Concentration	1mg/ml
immunogen	KLH conjugated synthetic peptide derived from human Annexin II: 256-339/339
Lsotype	IgG
Purification	affinity purified by Protein A
Buffer Solution	Human,Mouse,Rat1M TBS(pH7.4) with 1% BSA, Human,Mouse,Rat3% Proclin300 and 50% Glycerol.
Storage	Shipped at 4°C. Store at -20 °C for one year. Avoid repeated freeze/thaw cycles.
Attention	This product as supplied is intended for research use only, not for use in human, therapeutic or diagnostic applications.

PubMed

[PubMed](#)

This gene encodes a member of the annexin family. Members of this calcium-dependent phospholipid-binding protein family play a role in the regulation of cellular growth and in signal transduction pathways. This protein functions as an autocrine factor which heightens osteoclast formation and bone resorption. This gene has three pseudogenes located on chromosomes 4, 9 and 10, respectively. Multiple alternatively spliced transcript variants encoding different isoforms have been found for this gene. [provided by RefSeq, Jul 2008].

Function:

Calcium-regulated membrane-binding protein whose affinity for calcium is greatly enhanced by anionic phospholipids. It binds two calcium ions with high affinity. May be involved in heat-stress response.

Subunit:

Heterotetramer containing 2 light chains of S100A10/p11 and 2 heavy chains of ANXA2/p36. Interacts with ATP1B1 and DYSF. Interacts with human cytomegalovirus (HCMV). Interacts with COCH.

Subcellular Location:

Secreted, extracellular space, extracellular matrix, basement membrane. Melanosome. Note=In the lamina beneath the plasma membrane. Identified by mass spectrometry in melanosome fractions from stage I to stage IV. Translocated from the cytoplasm to the cell surface through a Golgi-independent mechanism.

Post-translational modifications:

Phosphorylation of Tyr-24 enhances heat stress-induced translocation to the cell surface.
ISGylated.

Similarity:

Belongs to the annexin family.
Contains 4 annexin repeats.

SWISS:

P07355

Gene ID:

302

Database links:

Product Detail

[Entrez Gene: 302](#) Human

[Entrez Gene: 12306](#) Mouse

[Entrez Gene: 56611](#) Rat

[Omim: 151740](#) Human

[SwissProt: P07355](#) Human

[SwissProt: P07356](#) Mouse

[SwissProt: Q07936](#) Rat

[Unigene: 511605](#) Human

[Unigene: 238343](#) Mouse

[Unigene: 90546](#) Rat

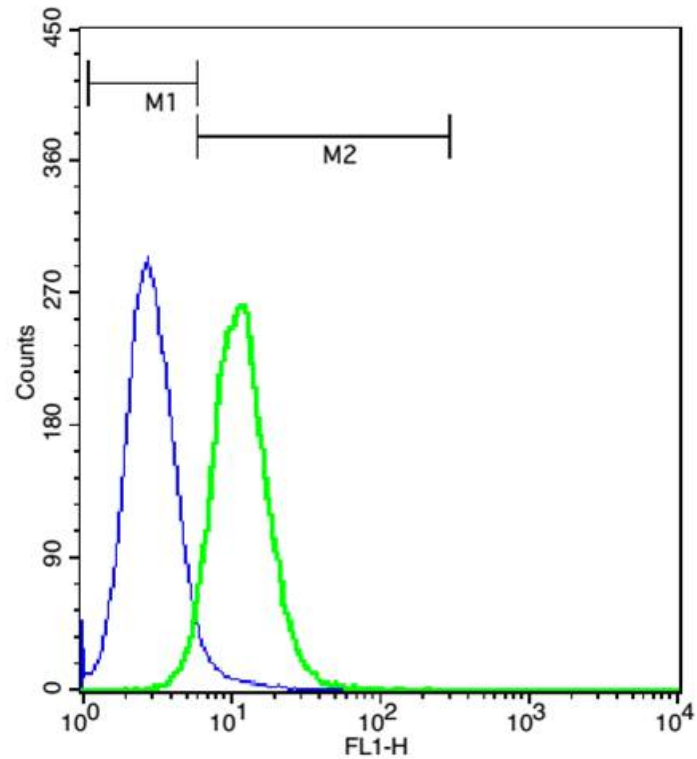
信号传导 (Signaling Intermediates)

Annexin 2 是新近发现的纤维蛋白溶解酶原(PLG)和组织型纤溶蛋白溶解酶原激活物(t-PA)的共受体,是 Ca^{2+} 介导具有高亲和力的磷脂 Binding protein.其介导血管内外纤维蛋白溶解,对保持机体内环境稳定具有重要作用.

依赖性膜磷脂 Binding proteinAnnexin II 调控异常及有害因子的作用,可导致血栓性疾病和动脉硬化症

钙依赖性膜磷脂 Binding protein 膜粘连蛋白 2 异常高表达所引起纤溶亢进,是白血病等恶性 Tumour 出血合并症重要机制之一.钙依赖性磷脂 Binding protein 对其干预和调控可能为治疗上述病症提供新思路,为临床治疗开辟新途径.

Product Picture



Cell: U937.

Concentration: 1:50.

Incubation: 40 minutes, room temperature.

Host/Blank: U937 cells.

Flow cytometric analysis of Rabbit Anti-Annexin A2/FITC Conjugated antibody (SL0576R-FITC) (green) compared with control in the absence of primary antibody (blue) followed by U937 cells.