

Rabbit Anti-CCNA2 antibody

SL0571R

Product Name	CCNA2
Chinese Name	周期素 A2 抗体
Alias	CCNA2_HUMAN; Cyclin-A2; Cyclin-A; CCN1; CCN1; CCNA; cyclin A2;
Research Area	Tumour Cardiovascular Cell biology Cyclin
Immunogen Species	Rabbit
Clonality	Polyclonal
React Species	Human, Mouse, (predicted: Rat,) IHC-P=1:100-500,IHC-F=1:100-500,IF=1:100-500 (Paraffin sections need antigen repair)
Applications	not yet tested in other applications. optimal dilutions/concentrations should be determined by the end user.
Theoretical molecular weight	49kDa
Cellular localization	cytoplasmic
Form	Liquid
Concentration	1mg/ml
immunogen	KLH conjugated synthetic peptide derived from human CCNA2: 375-431/431
Lsotype	IgG
Purification	affinity purified by Protein A
Buffer Solution	1M TBS(pH7.4) with 1% BSA, 3% Proclin300 and 50% Glycerol.
Storage	Shipped at 4°C. Store at -20 °C for one year. Avoid repeated freeze/thaw cycles.
Attention	This product as supplied is intended for research use only, not for use in human, therapeutic or diagnostic applications.
PubMed	PubMed
Product Detail	The protein encoded by this gene belongs to the highly conserved cyclin family, whose members function as regulators of the cell cycle. This protein binds and activates

cyclin-dependent kinase 2 and thus promotes transition through G1/S and G2/M. [provided by RefSeq, Aug 2016]

Function:

Essential for the control of the cell cycle at the G1/S (start) and the G2/M (mitosis) transitions.

Subunit:

Interacts with the CDK1 and CDK2 protein kinases to form a serine/threonine kinase holoenzyme complex. The cyclin subunit imparts substrate specificity to the complex. When associated with CDK2 (but not with CDK1), interacts with SCAPER.

Subcellular Location:

Nucleus. Cytoplasm. Note=Cytoplasmic when associated with SCAPER.

Post-translational modifications:

Polyubiquitinated via 'Lys-11'-linked ubiquitin by the anaphase-promoting complex (APC/C), leading to its degradation by the proteasome. Deubiquitinated and stabilized by USP37 enables entry into S phase.

Similarity:

Belongs to the cyclin family. Cyclin AB subfamily.

SWISS:

P20248

Gene ID:

890

Database links:

[Entrez Gene: 281667](#) Cow

[Entrez Gene: 890](#) Human

[Entrez Gene: 12428](#) Mouse

[Entrez Gene: 114494](#) Rat

[Omim: 123835](#) Human

[SwissProt: P30274](#) Cow

[SwissProt: P20248](#) Human

[SwissProt: P51943](#) Mouse

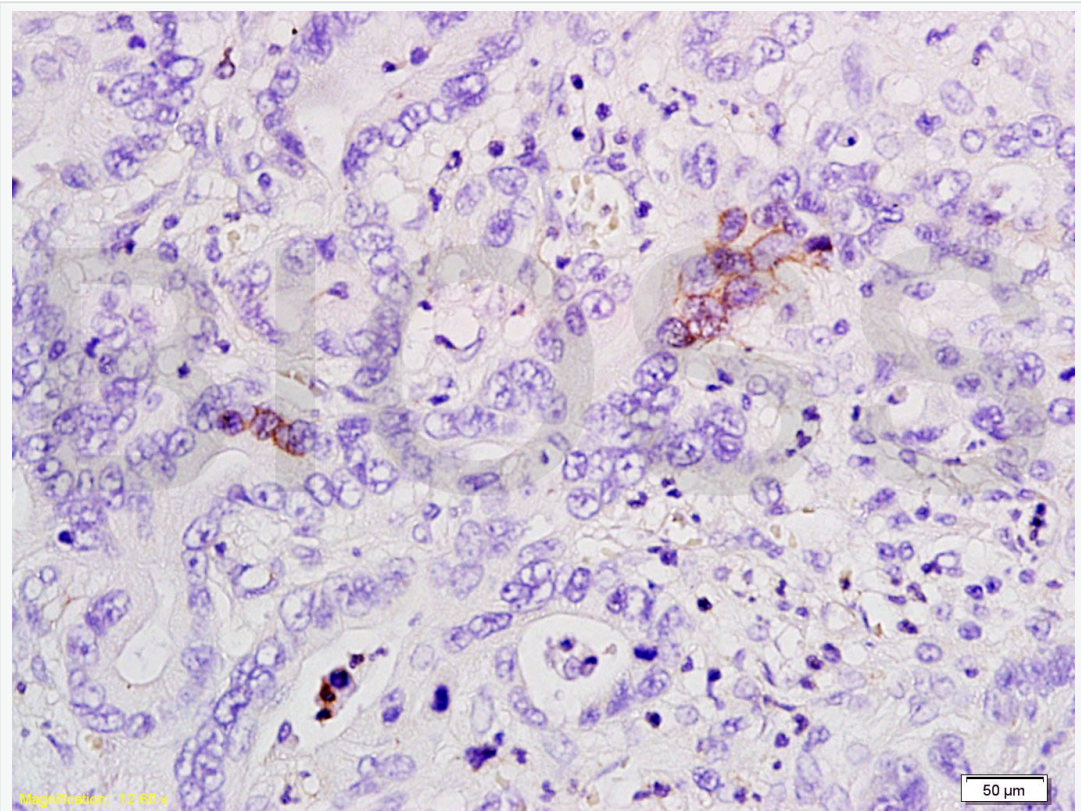
[Unigene: 58974](#) Human

[Unigene: 4189](#) Mouse

[Unigene: 13094](#) Rat

Cyclin A 可以出现在所有类型的细胞。各周期素可出现在不同的细胞增殖周期中。能结合和激活 CDK2 激酶，促进细胞 G1/S 和 G2/M 增殖周期的转化。

Product Picture

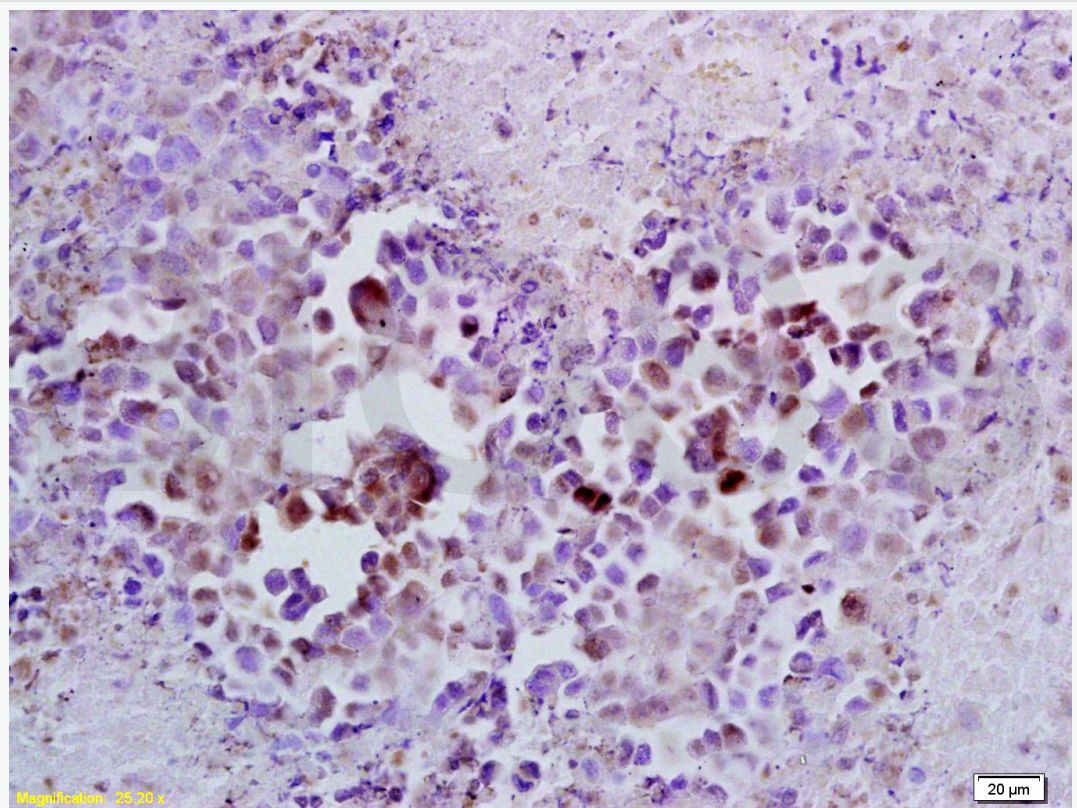


Tissue/cell: human bile duct cancer; 4% Paraformaldehyde-fixed and paraffin-embedded;

Antigen retrieval: citrate buffer (1M, pH 6.0), Boiling bathing for 15min; Block endogenous peroxidase by 3% Hydrogen peroxide for 30min; Blocking buffer (normal goat serum,C-0005) at 37°C for 20 min;

Incubation: Anti-Cyclin A2 Polyclonal Antibody, Unconjugated(SL0571R) 1:200,

overnight at 4°C, followed by conjugation to the secondary antibody(SP-0023) and DAB(C-0010) staining



Tissue/cell: mouse lymphoma tissue; 4% Paraformaldehyde-fixed and paraffin-embedded;

Antigen retrieval: citrate buffer (1M, pH 6.0), Boiling bathing for 15min; Block endogenous peroxidase by 3% Hydrogen peroxide for 30min; Blocking buffer (normal goat serum,C-0005) at 37°C for 20 min;

Incubation: Anti-Cyclin A2 Polyclonal Antibody, Unconjugated(SL0571R) 1:100, overnight at 4°C, followed by conjugation to the secondary antibody(SP-0023)



SunLong Biotech Co.,LTD
Tel: 0086-571-56623320 Fax:0086-571-56623318
E-mail:sales@sunlongbiotech.com
www.sunlongbiotech.com

and DAB(C-0010) staining