

Rabbit Anti-CCR-2 antibody

SL0562R

Product Name CCR-2

Chinese Name 细胞表面 Chemokine 受体 2 抗体

Alias C-C Chemokine receptor 2B; C C chemokine receptor type 2; C C CKR 2; CC chemokine receptor type 2; CC CKR 2; CCCR2; CCR 2; CCR1L; CCR2A; CCR2B; CCR5L; CD192; CD192 antigen; Chemokine C C motif receptor 2; Chemokine CC Motif Receptor 2; CKR 2; CKR2; CKR2A; CKR2B; CMKBR2; MCP 1 R; MCP1 RECEPTOR; MCP1R; Monocyte chemoattractant protein 1 receptor; Monocyte Chemotactic Protein 1 Receptor; CCR2_HUMAN; C-C chemokine receptor type 2; C-C CKR-2; CC-CKR-2; CCR2; Monocyte chemoattractant protein 1 receptor; MCP-1-R.

Research Area immunology Cell Surface Molecule

Immunogen Species Rabbit

Clonality Polyclonal

React Species Human, (predicted: Mouse, Rat, Dog, Horse,)

Applications IHC-P=1:100-500,IHC-F=1:100-500,IF=1:100-500,Flow-Cyt=0.2µg/Test (Paraffin sections need antigen repair)
not yet tested in other applications.
optimal dilutions/concentrations should be determined by the end user.

Theoretical molecular weight 41kDa

Cellular localization The cell membrane

Form Liquid

Concentration 1mg/ml

immunogen KLH conjugated synthetic peptide derived from human CCR-2: 201-300/373 <Cytoplasmic>

Lsotype IgG

Purification affinity purified by Protein A

Buffer 1M TBS(pH7.4) with 1% BSA, 3% Proclin300 and 50% Glycerol.

Solution

Storage Shipped at 4°C. Store at -20 °C for one year. Avoid repeated freeze/thaw cycles.

Attention This product as supplied is intended for research use only, not for use in human, therapeutic or diagnostic applications.

PubMed [PubMed](#)

This gene encodes two isoforms of a receptor for monocyte chemoattractant protein-1, a chemokine which specifically mediates monocyte chemotaxis. Monocyte chemoattractant protein-1 is involved in monocyte infiltration in inflammatory diseases such as rheumatoid arthritis as well as in the inflammatory response against tumors. The receptors encoded by this gene mediate agonist-dependent calcium mobilization and inhibition of adenylyl cyclase. This gene is located in the chemokine receptor gene cluster region. Two alternatively spliced transcript variants are expressed by the gene. [provided by RefSeq, Mar 2009].

Function:

Receptor for the MCP-1, MCP-3 and MCP-4 chemokines. Transduces a signal by increasing the intracellular calcium ions level. Alternative coreceptor with CD4 for HIV-1 infection.

Subunit:

Binds to HIV-1 Tat. Interacts with ARRB1.

Subcellular Location:

Cell membrane; Multi-pass membrane protein.

Product Detail

Post-translational modifications:

N-glycosylated.

Similarity:

Belongs to the G-protein coupled receptor 1 family.

SWISS:

P41597

Gene ID:

729230

Database links:

[Entrez Gene: 729230](#) Human

[Entrez Gene: 12772](#) Mouse

[Entrez Gene: 60463](#) Rat

[Omim: 601267](#) Human

[SwissProt: P41597](#) Human

[SwissProt: P51683](#) Mouse

[SwissProt: O55193](#) Rat

[Unigene: 511794](#) Human

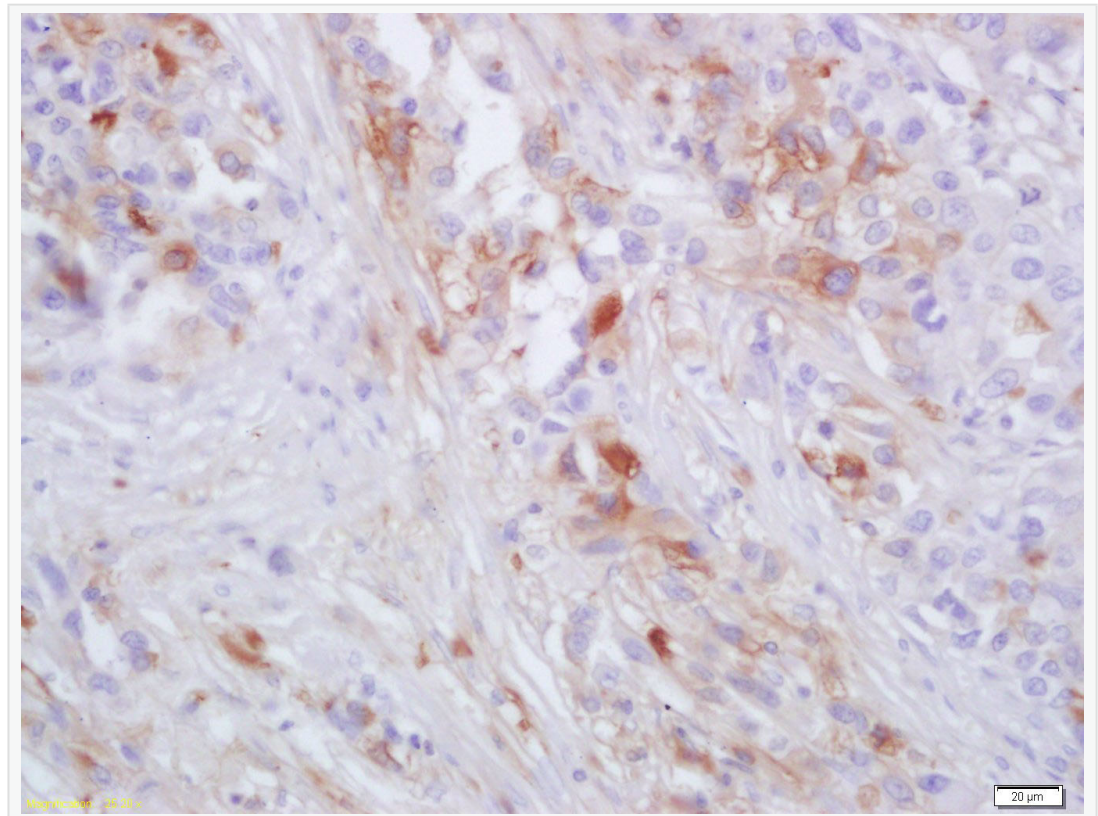
[Unigene: 705362](#) Human

[Unigene: 6272](#) Mouse

[Unigene: 211983](#) Rat

CCR-2 是属于 G protein-coupled receptor 一 家族，参与调节白细胞的迁移和活性作用，是 The cell membrane 蛋白，它的变异与 HIV-1 抵抗有关。CCR-2 不仅在宫颈癌组织中表达，而且在人其他 Tumour 如白血病、淋巴瘤、乳腺癌、肾 B 癌、胃癌、结肠癌、肝癌和子宫癌中均有过度表达，可作为肝癌及乳腺癌诊断的 Maker。

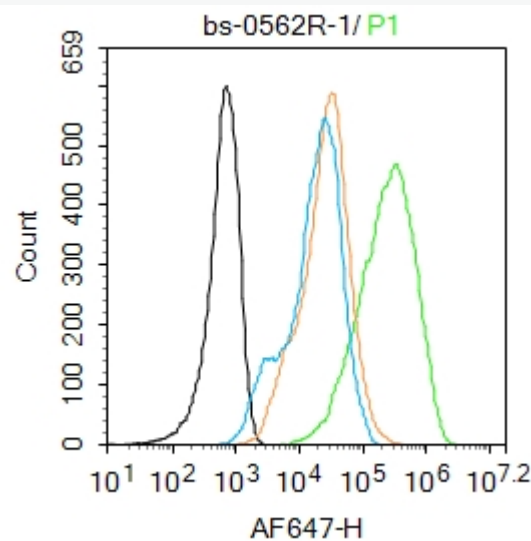
Product Picture



Tissue/cell: human lung carcinoma; 4% Paraformaldehyde-fixed and paraffin-embedded;

Antigen retrieval: citrate buffer (1M, pH 6.0), Boiling bathing for 15min; Block endogenous peroxidase by 3% Hydrogen peroxide for 30min; Blocking buffer (normal goat serum,C-0005) at 37°C for 20 min;

Incubation: Anti-CCR2 Polyclonal Antibody, Unconjugated(SL0562R) 1:200, overnight at 4°C, followed by conjugation to the secondary antibody(SP-0023) and DAB(C-0010) staining



Blank control: Raw264.7.

Primary Antibody (green line): Rabbit Anti-CCR-2 antibody (SL0562R)

Dilution: 1 μ g /10⁶ cells;

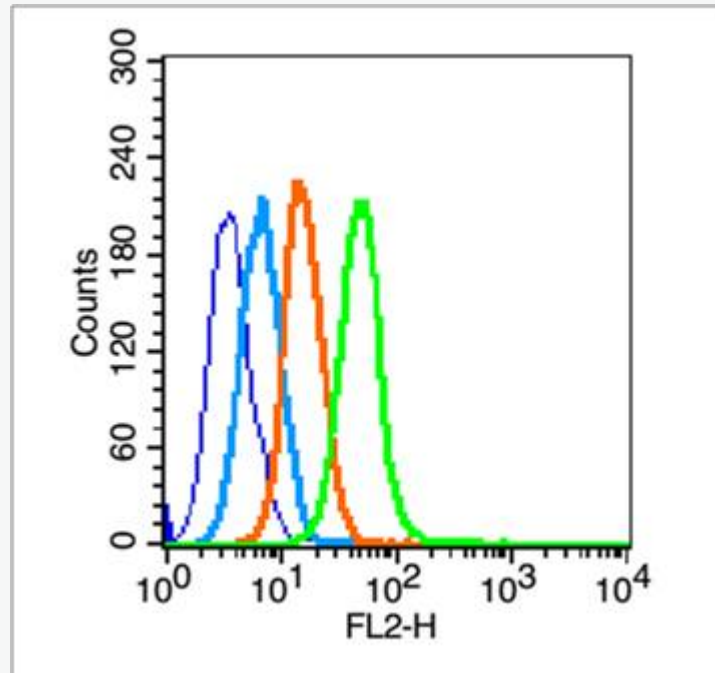
Isotype Control Antibody (orange line): Rabbit IgG .

Secondary Antibody : Goat anti-rabbit IgG-AF647

Dilution: 1 μ g /test.

Protocol

The cells were incubated in 5%BSA to block non-specific protein-protein interactions for 30 min at room temperature .Cells stained with Primary Antibody for 30 min at room temperature. The secondary antibody used for 40 min at room temperature. Acquisition of 20,000 events was performed.



Blank control (blue line): Hela (blue).

Primary Antibody (green line): Rabbit Anti- CCR-2 antibody (SL0562R)

Dilution: 0.2 μ g /10⁶ cells;

Isotype Control Antibody (orange line): Rabbit IgG .

Secondary Antibody (white blue line): Goat anti-rabbit IgG-PE

Dilution: 1 μ g /test.

Protocol

The cells were fixed with 80% methanol for 5 min at -20°C (The cells were fixed with 2% paraformaldehyde for 10 min at room temperature). Cells stained with Primary Antibody for 30 min at room temperature. The cells were then incubated in 1 X PBS/2%BSA/10% goat serum to block non-specific protein-protein interactions followed by the antibody for 15 min at room temperature. The secondary antibody used for 40 min at room temperature. Acquisition of 20,000 events was performed.