



Rabbit Anti-EMP-1 antibody

SL0558R

Product Name EMP-1**Chinese Name** 表皮膜蛋白 1 抗体**Alias** CL-20; EMP 1; EMP1; EMP1_HUMAN; Epithelial membrane protein 1; Protein B4B; TMP; Tumor-associated membrane protein.**Research Area** Cell biology immunology Apoptosis The cell membrane 受体**Immunogen Species** Rabbit**Clonality** Polyclonal**React Species** Human, Mouse, Rat,**Applications** WB=1:500-2000,IHC-P=1:100-500,IHC-F=1:100-500,IF=1:100-500 (Paraffin sections need antigen repair)
not yet tested in other applications.
optimal dilutions/concentrations should be determined by the end user.**Theoretical molecular weight** 17kDa**Cellular localization** The cell membrane**Form** Liquid**Concentration** 1mg/ml**immunogen** KLH conjugated synthetic peptide derived from mouse EMP-1: 101-160/160**Lsotype** IgG**Purification** affinity purified by Protein A**Buffer Solution** 1M TBS(pH7.4) with 1% BSA, 3% Proclin300 and 50% Glycerol.**Storage** Shipped at 4°C. Store at -20 °C for one year. Avoid repeated freeze/thaw cycles.**Attention** This product as supplied is intended for research use only, not for use in human, therapeutic or diagnostic applications.**PubMed** [PubMed](#)**Product** Epithelial membrane protein-1 (EMP-1) is a four pass transmembrane protein consisting of

Detail

160 amino acids. It is a member of a small family of epithelial membrane proteins. EMP-1 is very similar in structure to its close relative, Peripheral Myelin Protein 22 (PMP22). It is most predominantly expressed in tissues of the gastrointestinal tract but has also been found to be a junctional protein in the liver expressed along the intercellular border. EMP-1 directly interacts with the C-terminus of the P2X7 receptor and may be involved in membrane blebbing. EMP-1 may also be an important regulator in cell communication, signaling, and adhesion. When EMP-1 is overexpressed, cell proliferation is inhibited, S phase is arrested and G1 phase is prolonged in esophageal cancer cells. EMP-1 may play a role in tumorigenesis and has been identified as a biomarker for gefitinib treatment resistance for patients with lung cancer.

Subcellular Location:

Membrane; Multi-pass membrane protein.

Tissue Specificity:

Most prominently found in the gastrointestinal tract, skin, lung, and brain but not in liver.

Similarity:

Belongs to the PMP-22/EMP/MP20 family.

SWISS:

P47801

Gene ID:

13730

Database links:

[Entrez Gene: 2012](#) Human

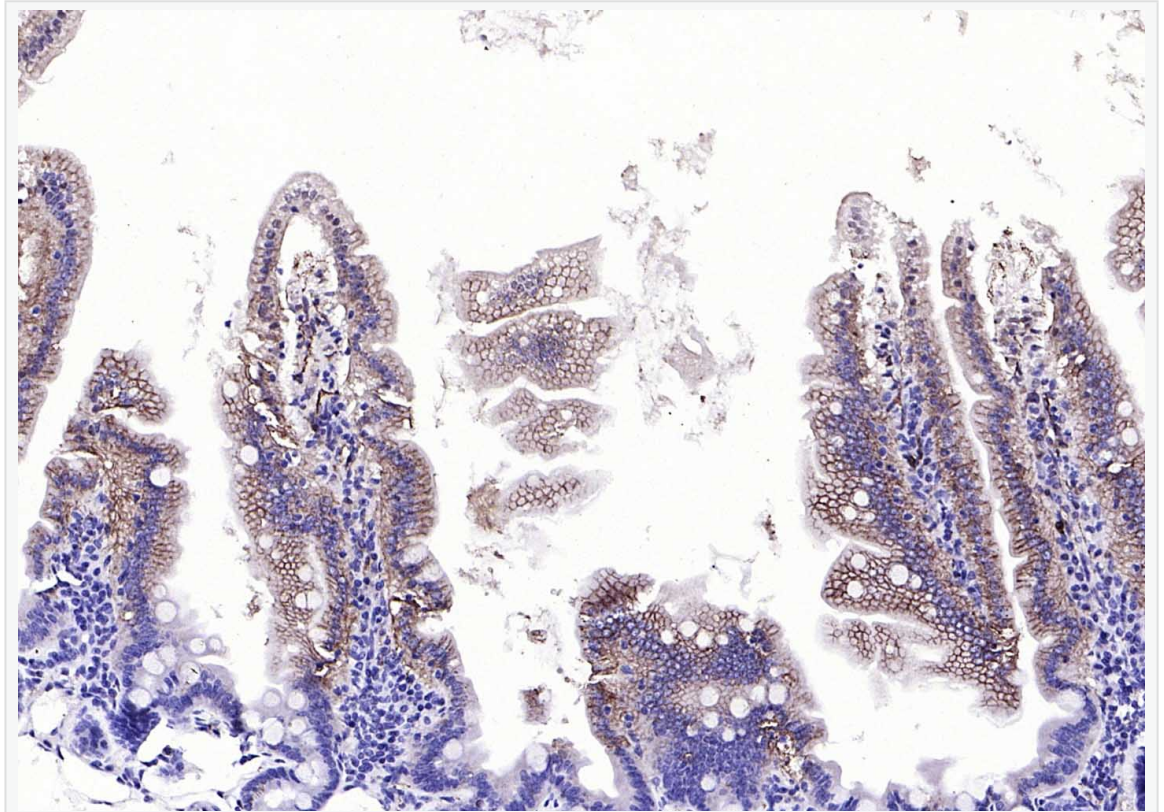
[Omim: 602333](#) Human

[SwissProt: P54849](#) Human

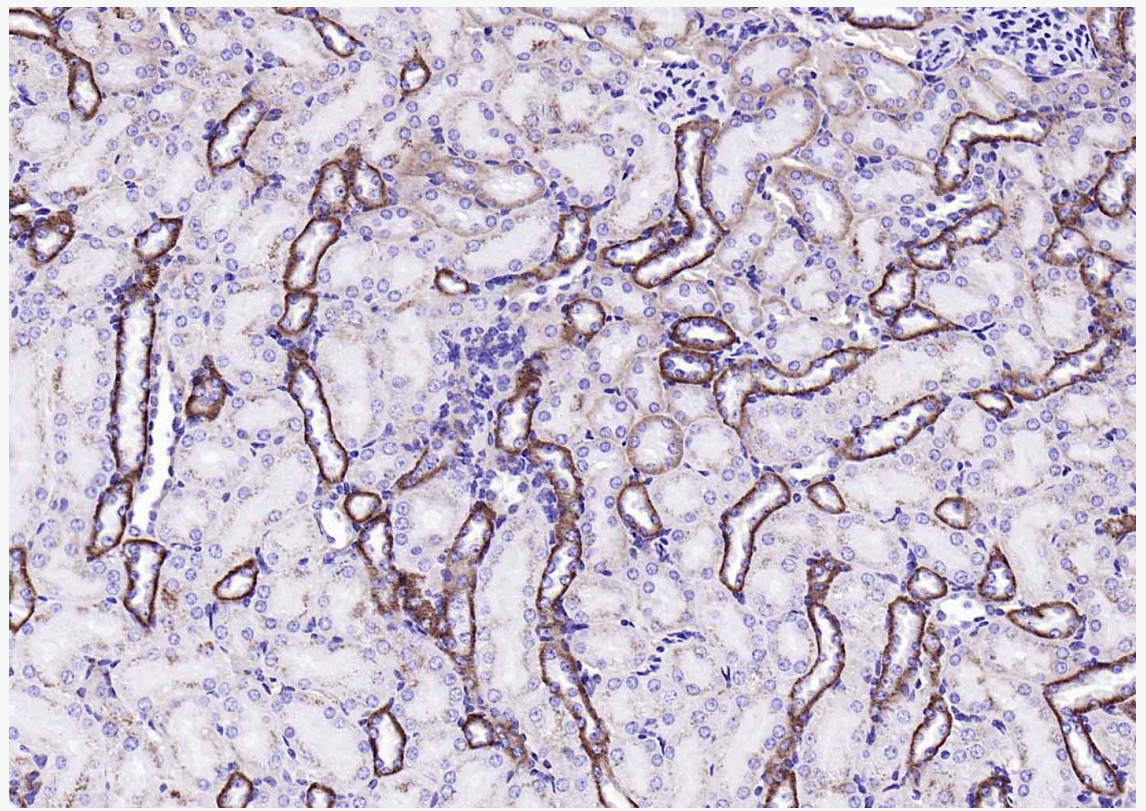
[Unigene: 719042](#) Human

emp-1 蛋白主要参与细胞生长发育、细胞增殖、死亡、表皮发育等作用。

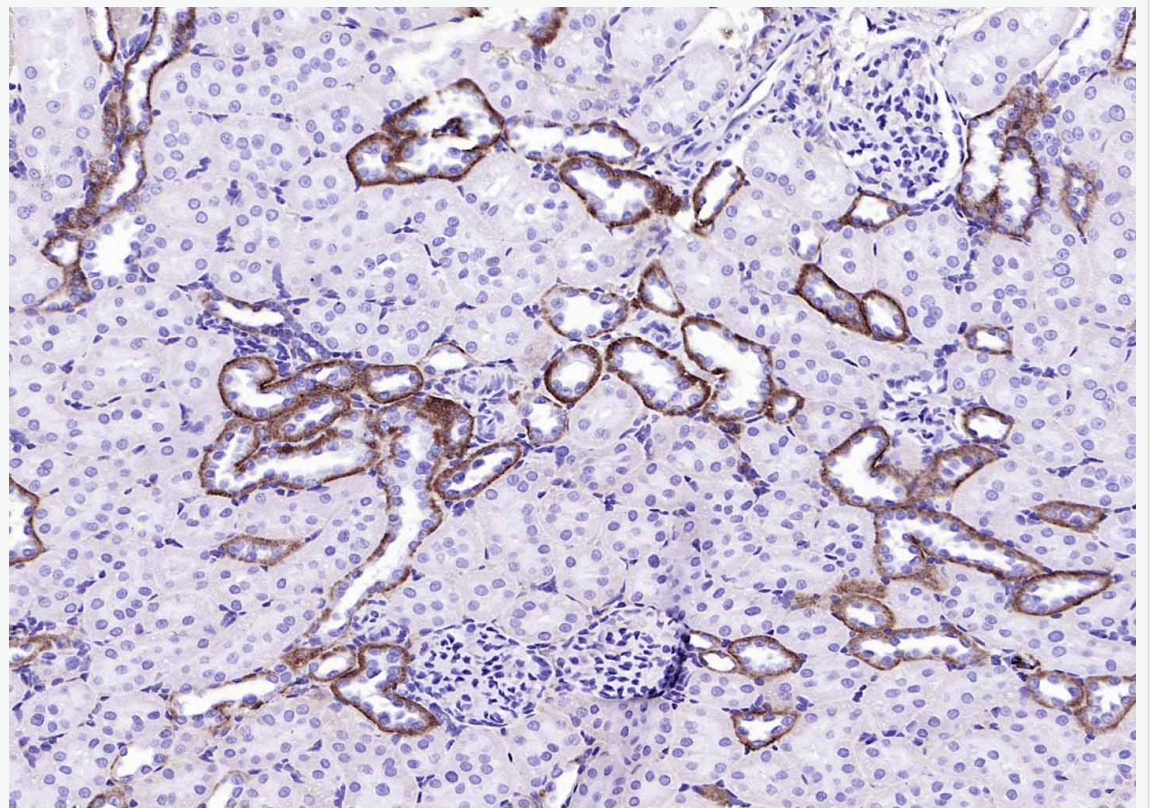
**Product
Picture**



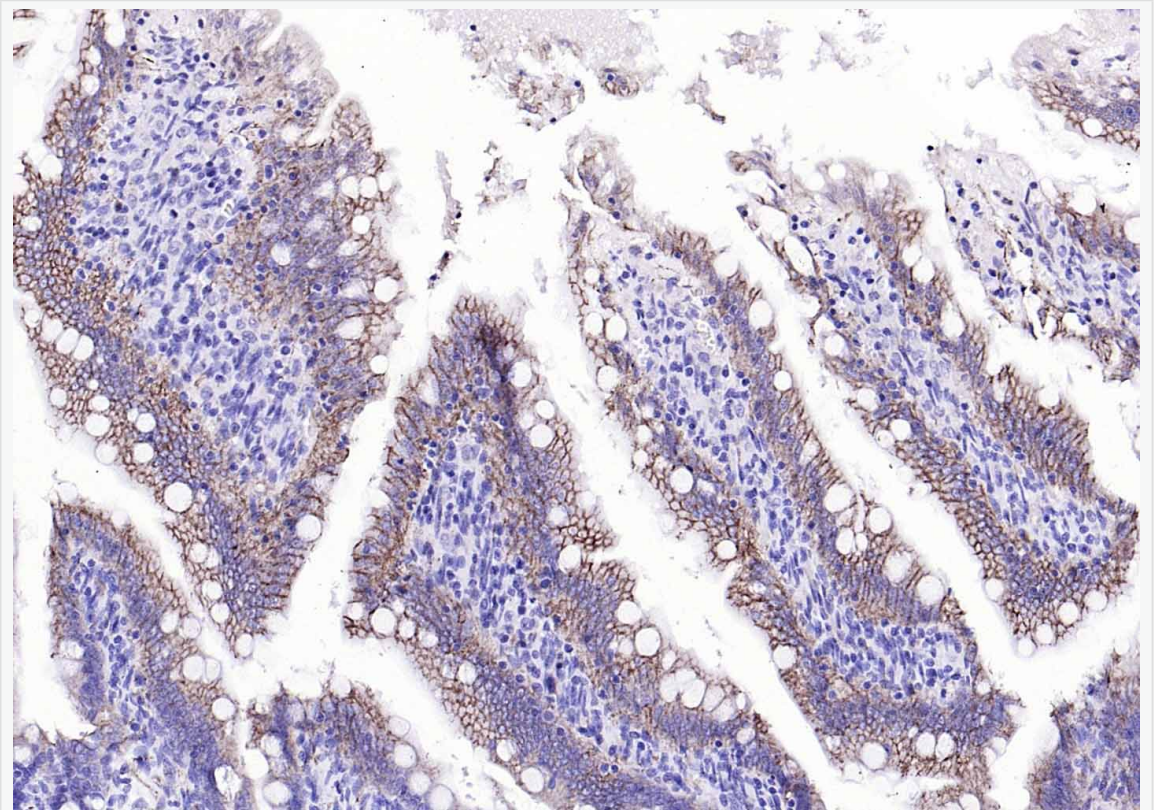
Paraformaldehyde-fixed, paraffin embedded (mouse small intestine); Antigen retrieval by boiling in sodium citrate buffer (pH6.0) for 15min; Block endogenous peroxidase by 3% hydrogen peroxide for 20 minutes; Blocking buffer (normal goat serum) at 37°C for 30min; Antibody incubation with (EMP-1) Polyclonal Antibody, Unconjugated (SL0558R) at 1:200 overnight at 4°C, followed by operating according to SP Kit(Rabbit) (sp-0023) instructions and DAB staining.



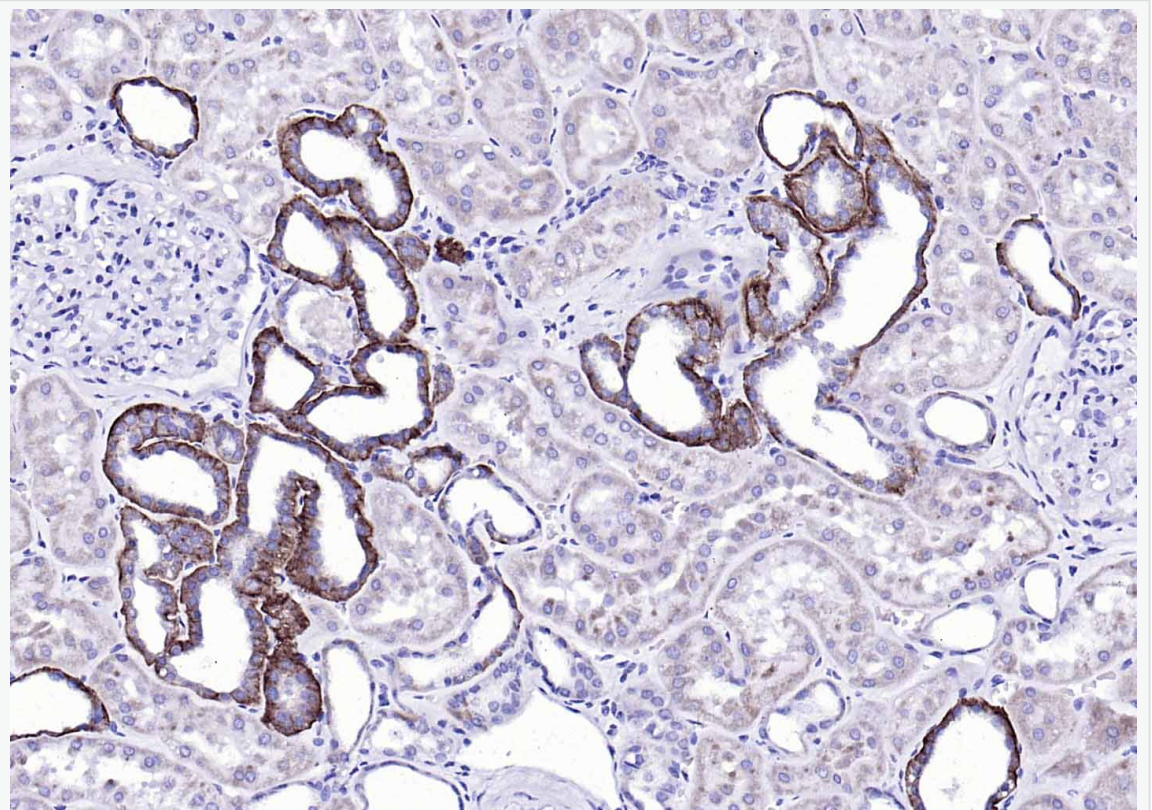
Paraformaldehyde-fixed, paraffin embedded (mouse kidney); Antigen retrieval by boiling in sodium citrate buffer (pH6.0) for 15min; Block endogenous peroxidase by 3% hydrogen peroxide for 20 minutes; Blocking buffer (normal goat serum) at 37°C for 30min; Antibody incubation with (EMP-1) Polyclonal Antibody, Unconjugated (SL0558R) at 1:200 overnight at 4°C, followed by operating according to SP Kit(Rabbit) (sp-0023) instructions and DAB staining.



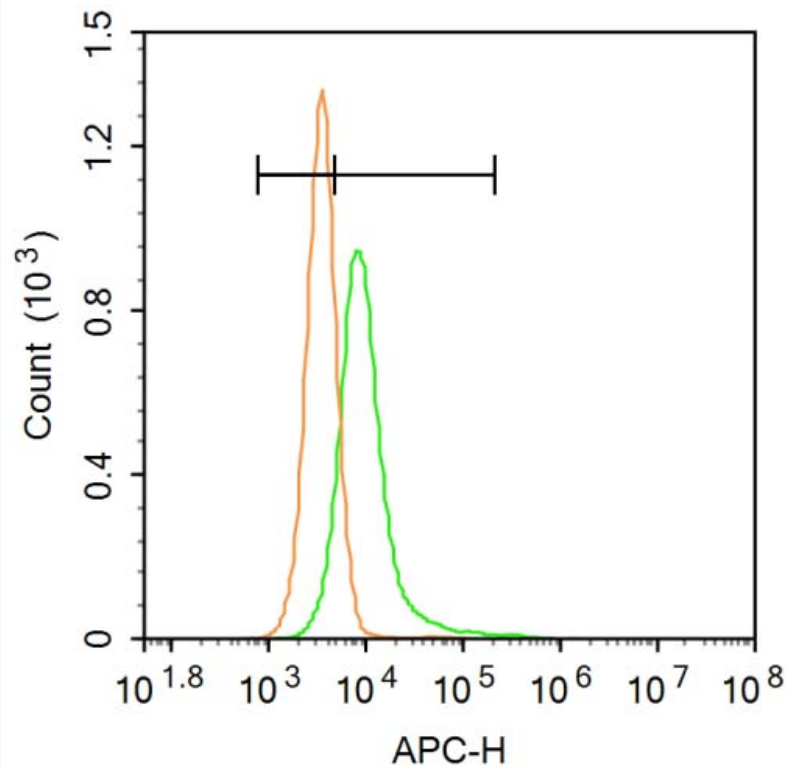
Paraformaldehyde-fixed, paraffin embedded (rat kidney); Antigen retrieval by boiling in sodium citrate buffer (pH6.0) for 15min; Block endogenous peroxidase by 3% hydrogen peroxide for 20 minutes; Blocking buffer (normal goat serum) at 37°C for 30min; Antibody incubation with (EMP-1) Polyclonal Antibody, Unconjugated (SL0558R) at 1:200 overnight at 4°C, followed by operating according to SP Kit(Rabbit) (sp-0023) instructions and DAB staining.



Paraformaldehyde-fixed, paraffin embedded (rat small intestine); Antigen retrieval by boiling in sodium citrate buffer (pH6.0) for 15min; Block endogenous peroxidase by 3% hydrogen peroxide for 20 minutes; Blocking buffer (normal goat serum) at 37°C for 30min; Antibody incubation with (EMP-1) Polyclonal Antibody, Unconjugated (SL0558R) at 1:200 overnight at 4°C, followed by operating according to SP Kit(Rabbit) (sp-0023) instructions and DAB staining.



Paraformaldehyde-fixed, paraffin embedded (Human kidney); Antigen retrieval by boiling in sodium citrate buffer (pH6.0) for 15min; Block endogenous peroxidase by 3% hydrogen peroxide for 20 minutes; Blocking buffer (normal goat serum) at 37°C for 30min; Antibody incubation with (EMP-1) Polyclonal Antibody, Unconjugated (SL0558R) at 1:200 overnight at 4°C, followed by operating according to SP Kit(Rabbit) (sp-0023) instructions and DAB staining.



Blank control: A431.

Primary Antibody (green line): Rabbit Anti-EMP-1 antibody (SL0558R)

Dilution: 3 μ g /10⁶ cells;

Isotype Control Antibody (orange line): Rabbit IgG .

Secondary Antibody: Goat anti-rabbit IgG-AF647

Dilution: 3 μ g /test.

Protocol

The cells were incubated in 5%BSA to block non-specific protein-protein interactions for 30 min at room temperature .Cells stained with Primary Antibody for 30 min at room temperature. The secondary antibody used for 40 min at room temperature.



SunLong Biotech Co.,LTD
Tel: 0086-571-56623320 Fax:0086-571-56623318
E-mail:sales@sunlongbiotech.com
www.sunlongbiotech.com

Acquisition of 20,000 events was performed.