

Rabbit Anti-ANGPTL2 antibody

SL0537R

Product Name ANGPTL2

Chinese Name 血管生成素样蛋白 2 抗体

Alias ANGPTL2; Angiotensin like 2; Angiotensin related protein 2; Angiotensin-like protein 2; Angiotensin-related protein 2; ANGL2_HUMAN; Angptl2; ANGL2; Arp2; HARP; MGC8889.

Research Area Tumour Cardiovascular

Immunogen Species Rabbit

Clonality Polyclonal

React Species Human, Mouse, (predicted: Rat, Chicken, Dog, Pig, Cow, Horse, Rabbit,)
WB=1:500-2000,IHC-P=1:100-500,IHC-F=1:100-500,IF=1:100-500 (Paraffin sections need antigen repair)

Applications not yet tested in other applications.
optimal dilutions/concentrations should be determined by the end user.

Theoretical molecular weight 55kDa

Cellular localization Secretory protein

Form Liquid

Concentration 1mg/ml

immunogen KLH conjugated synthetic peptide derived from human ANGPTL2: 401-493/493

Lsotype IgG

Purification affinity purified by Protein A

Buffer Solution 1M TBS(pH7.4) with 1% BSA, 3% Proclin300 and 50% Glycerol.

Storage Shipped at 4°C. Store at -20 °C for one year. Avoid repeated freeze/thaw cycles.

Attention This product as supplied is intended for research use only, not for use in human, therapeutic or diagnostic applications.

PubMed [PubMed](#)

ANGPTL2/ANG-2 (Angiopoietin-like Protein 2) Induces sprouting in endothelial cells through an autocrine and paracrine action. [Subcellular location] Secreted. [Tissue specificity] Widely expressed in heart, small intestine, spleen and stomach. Also found in lower levels in colon, ovary, adrenal gland, skeletal muscle and in prostate. [PTM] N-glycosylated. [Similarity] Contains 1 fibrinogen C-terminal domain.
ANGPTL2/ANG-2 (Angiopoietin-like Protein 2).

Function:

Induces sprouting in endothelial cells through an autocrine and paracrine action.

Subcellular Location:

Secreted.

Tissue Specificity:

Widely expressed in heart, small intestine, spleen and stomach. Also found in lower levels in colon, ovary, adrenal gland, skeletal muscle and in prostate.

Similarity:

Contains 1 fibrinogen C-terminal domain.

**Product
Detail**

SWISS:

Q9UKU9

Gene ID:

23452

Database links:

[Entrez Gene: 23452](#) Human

[Entrez Gene: 26360](#) Mouse

[Entrez Gene: 171100](#) Rat

[Omim: 605001](#) Human

[SwissProt: Q9UKU9](#) Human

[SwissProt: Q9R045](#) Mouse

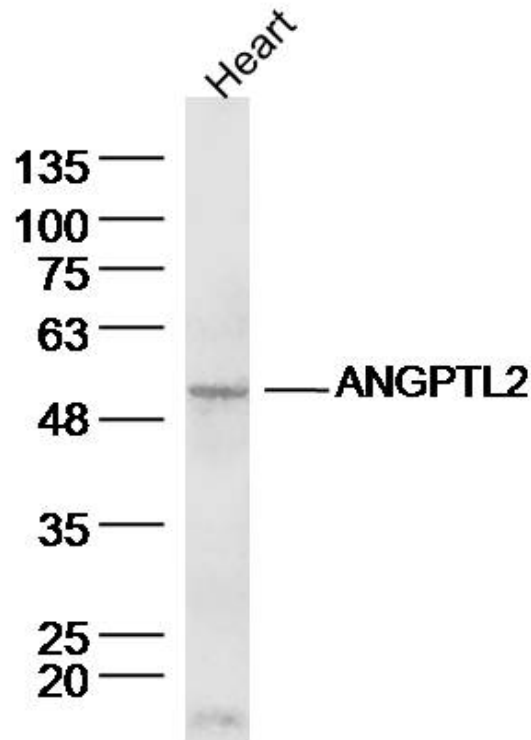
[Unigene: 653262](#) Human

[Unigene: 208919](#) Mouse

[Unigene: 162660](#) Rat

Ang1/2 与血管生成关系最为密切,目前有关该家族成员在 Tumour 血管生成中的研究正日益增多。近年来也用于 Diabetes 导致的血管损伤研究也是热门课题.

Product
Picture



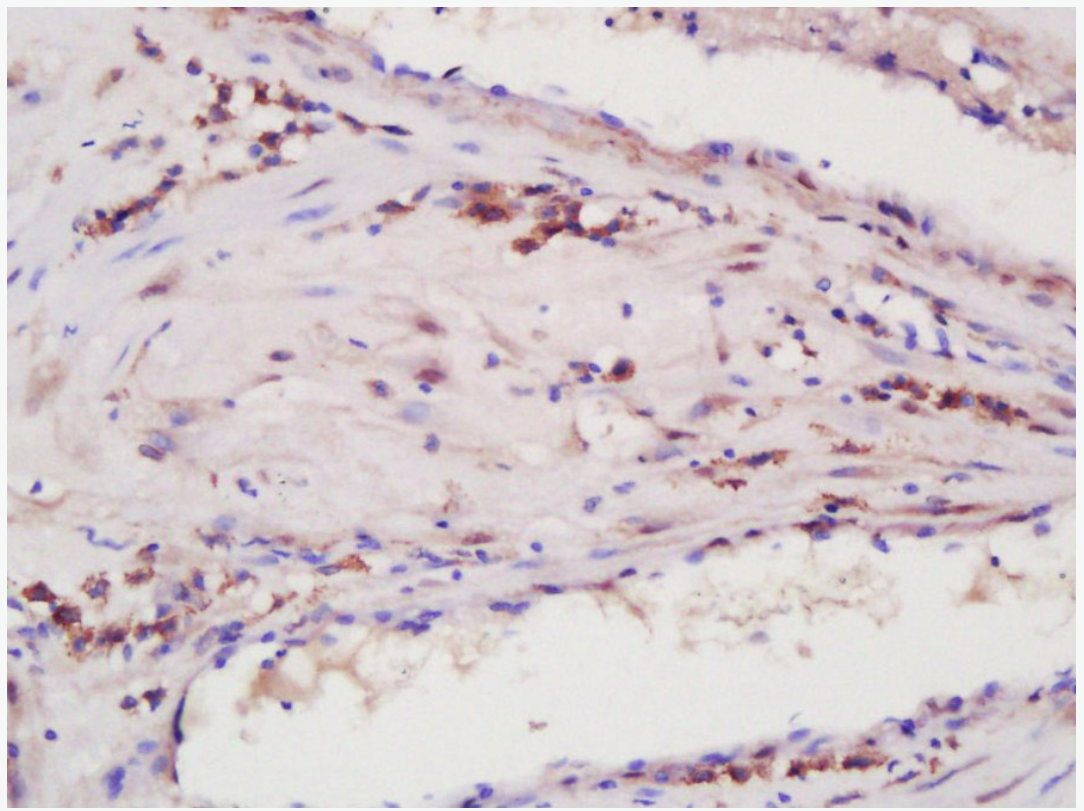
Sample: Heart (Mouse) Lysate at 40 ug

Primary: Anti-ANGPTL2 (SL0537R) at 1/300 dilution

Secondary: IRDye800CW Goat Anti-Rabbit IgG at 1/20000 dilution

Predicted band size: 55 kD

Observed band size: 55 kD



Paraformaldehyde-fixed, paraffin embedded (Human uterine muscle); Antigen retrieval by boiling in sodium citrate buffer (pH6.0) for 15min; Block endogenous peroxidase by 3% hydrogen peroxide for 20 minutes; Blocking buffer (normal goat serum) at 37°C for 30min; Antibody incubation with (Angptl2) Polyclonal Antibody, Unconjugated (SL0537R) at 1:200 overnight at 4°C, followed by operating according to SP Kit(Rabbit) (sp-0023) instructions and DAB staining.