

Rabbit Anti-Matriptase antibody

SL0531R

Product Name Matriptase

Chinese Name 蛋白裂解酶（一种新的癌基因）抗体

Alias transmembrane protease, serine 6; 1300008A22Rik; IRIDA; MATRIPTASE2; TMPRSS6.

Research Area Tumour Cell biology Kinases and Phosphatases Synthesis and Degradation

Immunogen Species Rabbit

Clonality Polyclonal

React Species Human, (predicted: Mouse, Rat,)

Applications ICC/IF=1:50-200（Paraffin sections need antigen repair）

not yet tested in other applications.
optimal dilutions/concentrations should be determined by the end user.

Theoretical molecular weight 57kDa

Cellular localization The cell membrane

Form Liquid

Concentration 1mg/ml

immunogen KLH conjugated synthetic peptide derived from human Matriptase: 11-100/855 <Cytoplasmic>

Lsotype IgG

Purification affinity purified by Protein A

Buffer Solution 1M TBS(pH7.4) with 1% BSA, 3% Proclin300 and 50% Glycerol.

Storage Shipped at 4°C. Store at -20 °C for one year. Avoid repeated freeze/thaw cycles.

Attention This product as supplied is intended for research use only, not for use in human, therapeutic or diagnostic applications.

PubMed [PubMed](#)

Product The protein encoded by this gene is an epithelial-derived, integral membrane serine

Detail

protease. This protease forms a complex with the Kunitz-type serine protease inhibitor, HAI-1, and is found to be activated by sphingosine 1-phosphate. This protease has been shown to cleave and activate hepatocyte growth factor/scattering factor, and urokinase plasminogen activator, which suggest the function of this protease as an epithelial membrane activator for other proteases and latent growth factors. The expression of this protease has been associated with breast, colon, prostate, and ovarian tumors, which implicates its role in cancer invasion, and metastasis.

Subunit:

Interacts with CDCP1. May interact with TMEFF1.

Subcellular Location:

Membrane; Single-pass type II membrane protein (Probable).

Similarity:

Belongs to the peptidase S1 family.

Contains 2 CUB domains.

Contains 4 LDL-receptor class A domains.

Contains 1 peptidase S1 domain.

SWISS:

Q9Y5Y6

Gene ID:

164656

Database links:

[Entrez Gene: 164656](#) Human

[Entrez Gene: 71753](#) Mouse

[Entrez Gene: 315388](#) Rat

[Omim: 609862](#) Human

[SwissProt: Q8IU80](#) Human

[SwissProt: Q9DBI0](#) Mouse

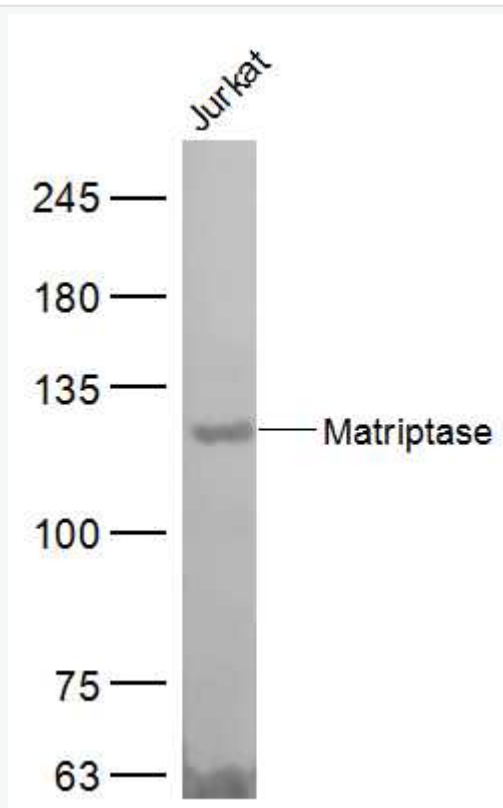
[Unigene: 370885](#) Human

[Unigene: 34056](#) Mouse

[Unigene: 214123](#) Rat

蛋白裂解酶是第一种已在分子水平上辨明的、与癌症相关的跨膜丝氨酸蛋白酶。他们的研究首次发现蛋白裂解酶可以诱发 Tumour。蛋白裂解酶是一种 The cell membrane 蛋白，一直以来研究者们对这种蛋白裂解酶的致癌功能表示怀疑。matriptase 在多种上皮来源的 Tumour 中均高水平表达，有学者认为：matriptase 作为一种癌基因，为 Transmembrane protein 而且位于细胞表面，部分位于胞浆。

**Product
Picture**



Sample:

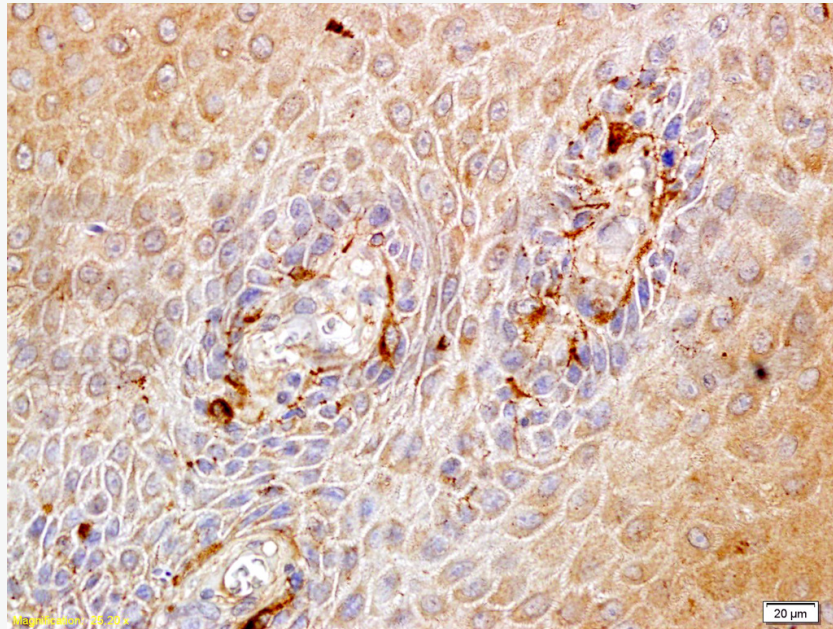
Jurkat (Human) CellLysate at 40 ug

Primary: Anti-Matriptase (SL0531R) at 1/300 dilution

Secondary: IRDye800CW Goat Anti-Rabbit IgG at 1/20000 dilution

Predicted band size: 94 kD

Observed band size: 125 kD



bs-0531R Anti-Matriptase Polyclonal Antibody

Tissue/cell: carcinoma of human endometrium;

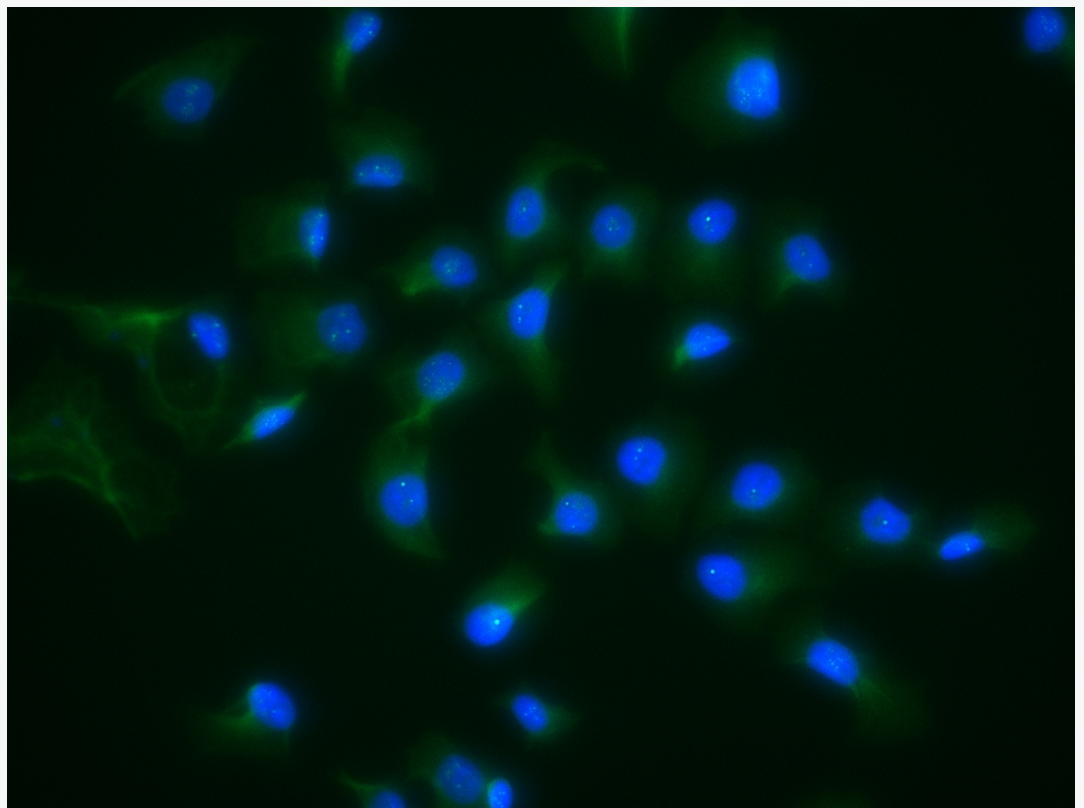
4% Paraformaldehyde-fixed and paraffin-embedded

Antigen retrieval: citrate buffer (0.01M, pH 6.0), Boiling bathing for 15min

Block endogenous peroxidase by 3% Hydrogen peroxide for 30min

Blocking buffer (normal goat serum) at 37°C for 20 min

Incubation: Anti-Matriptase Polyclonal Antibody, Unconjugated(bs-0531R) 1:100, overnight at 4°C, followed by conjugation to the secondary antibody and DAB staining



HepG2 cell; 4% Paraformaldehyde-fixed; Triton X-100 at room temperature for 20 min; Blocking buffer (normal goat serum, C-0005) at 37°C for 20 min; Antibody incubation with (Matriptase) polyclonal Antibody, Unconjugated (SL0531R) 1:25, 90 minutes at 37°C; followed by a conjugated Goat Anti-Rabbit IgG antibody at 37°C for 90 minutes, DAPI (blue, C02-04002) was used to stain the cell nuclei.