

## Rabbit Anti-CD24 antibody

SL0528R

**Product Name** CD24

**Chinese Name** CD24 抗体

**Alias** Signal transducer CD24; CD 24; CD24 antigen (small cell lung carcinoma cluster 4 antigen); CD24 antigen; CD24 molecule; CD24A; GPI linked surface mucin; Heat stable antigen; HSA; Nectadrin; Small cell lung carcinoma cluster 4 antigen; Ly-52; CD24\_HUMAN.

**Research Area** Tumour Cell biology immunology Neurobiology Stem cells Cell adhesion molecule Cell Surface Molecule glycoprotein t-lymphocyte b-lymphocyte marrow cells

**Immunogen Species** Rabbit

**Clonality** Polyclonal

**React Species** Human, Rat, (predicted: Mouse, )  
WB=1:500-2000,Flow-Cyt=1ug/Test

**Applications** not yet tested in other applications.  
optimal dilutions/concentrations should be determined by the end user.

**Theoretical molecular weight** 8kDa

**Detection molecular weight** 35-45kDa

**Cellular localization** The cell membrane

**Form** Liquid

**Concentration** 1mg/ml

**immunogen** KLH conjugated synthetic peptide derived from human CD24 Propeptide: 60-80/80

**Lsotype** IgG

**Purification** affinity purified by Protein A

**Buffer Solution** 1M TBS(pH7.4) with 1% BSA, 3% Proclin300 and 50% Glycerol.

**Storage** Shipped at 4°C. Store at -20 °C for one year. Avoid repeated freeze/thaw cycles.

**Attention**

This product as supplied is intended for research use only, not for use in human, therapeutic or diagnostic applications.

**PubMed**

[PubMed](#)

This gene encodes a sialoglycoprotein that is expressed on mature granulocytes and B cells and modulates growth and differentiation signals to these cells. The precursor protein is cleaved to a short 32 amino acid mature peptide which is anchored via a glycosyl phosphatidylinositol (GPI) link to the cell surface. This gene was missing from previous genome assemblies, but is properly located on chromosome 6. Non-transcribed pseudogenes have been designated on chromosomes 1, 15, 20, and Y. Alternative splicing results in multiple transcript variants. [provided by RefSeq, Apr 2014]

**Function:**

Modulates B-cell activation responses. Signaling could be triggered by the binding of a lectin-like ligand to the CD24 carbohydrates, and transduced by the release of second messengers derived from the GPI-anchor. Promotes AG-dependent proliferation of B-cells, and prevents their terminal differentiation into antibody-forming cells.

**Subcellular Location:**

Cell membrane.

**Tissue Specificity:**

B-cells. Expressed in a number of B-cell lines including P32/SH and Namalwa. Expressed in erythroleukemia cell and small cell lung carcinoma cell lines. Also expressed on the surface of T-cells.

**Product  
Detail**

**Post-translational modifications:**

Extensively O-glycosylated.

**DISEASE:**

Genetic variations in CD24 are associated with susceptibility to multiple sclerosis (MS). A multifactorial, inflammatory, demyelinating disease of the central nervous system. Sclerotic lesions are characterized by perivascular infiltration of monocytes and lymphocytes and appear as indurated areas in pathologic specimens (sclerosis in plaques). The pathological mechanism is regarded as an autoimmune attack of the myelin sheath, mediated by both cellular and humoral immunity. Clinical manifestations include visual loss, extra-ocular movement disorders, paresthesias, loss of sensation, weakness, dysarthria, spasticity, ataxia and bladder dysfunction. Genetic and environmental factors influence susceptibility to the disease.

Note=Polymorphisms in CD24 may act as a genetic modifier for susceptibility and progression of MS in some populations, perhaps by affecting the efficiency of CD24 expression on the cell surface.

**Similarity:**

Belongs to the CD24 family.

**SWISS:**

P25063

**Gene ID:**

100133941

**Database links:**

[Entrez Gene: 100133941](#) Human

[Entrez Gene: 12484](#) Mouse

[Entrez Gene: 25145](#) Rat

[Omim: 600074](#) Human

[SwissProt: P25063](#) Human

[SwissProt: P24807](#) Mouse

[SwissProt: Q07490](#) Rat

[Unigene: 644105](#) Human

[Unigene: 721443](#) Human

[Unigene: 29742](#) Mouse

[Unigene: 6007](#) Rat

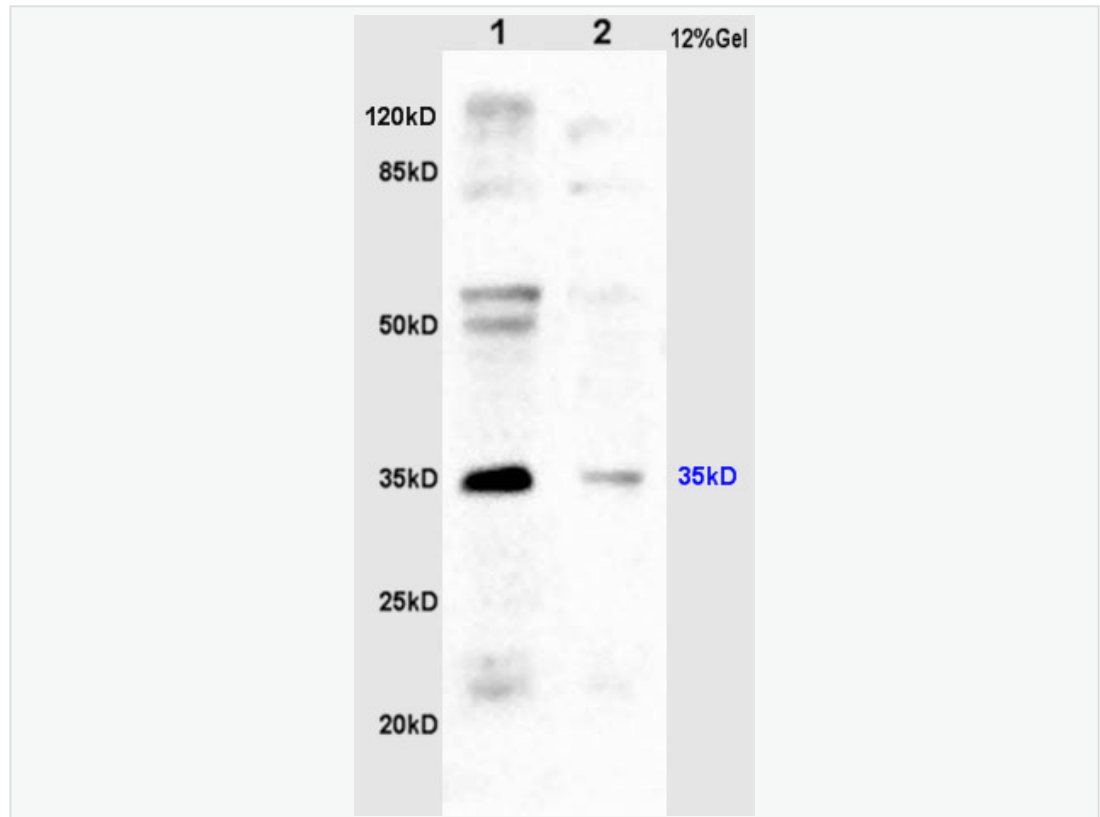
神经 Stem cellsMaker

TumourMaker

CD24 是一种低分子质量高度糖基化的黏附分子, 主要表达在造血系统. 最近研究表明, 在造血系统 Tumour 和一些器官的实体瘤表面可见 CD24 高表达。

近几年很多学者认为: CD24 在前列腺癌、非小细胞肺癌、鼻咽癌、原发性肝癌、胆管细胞癌、麦克尔细胞癌、神经源性 Tumour、胰腺癌、胃癌、结肠癌、肾细胞癌、B 细胞淋巴瘤、乳腺癌等 Tumour 组织中表达增强, 且和 Tumour 侵袭转移、复发和预后相关。

**Product  
Picture**



Sample:

Colon carcinoma (Human) lysate at 30ug;

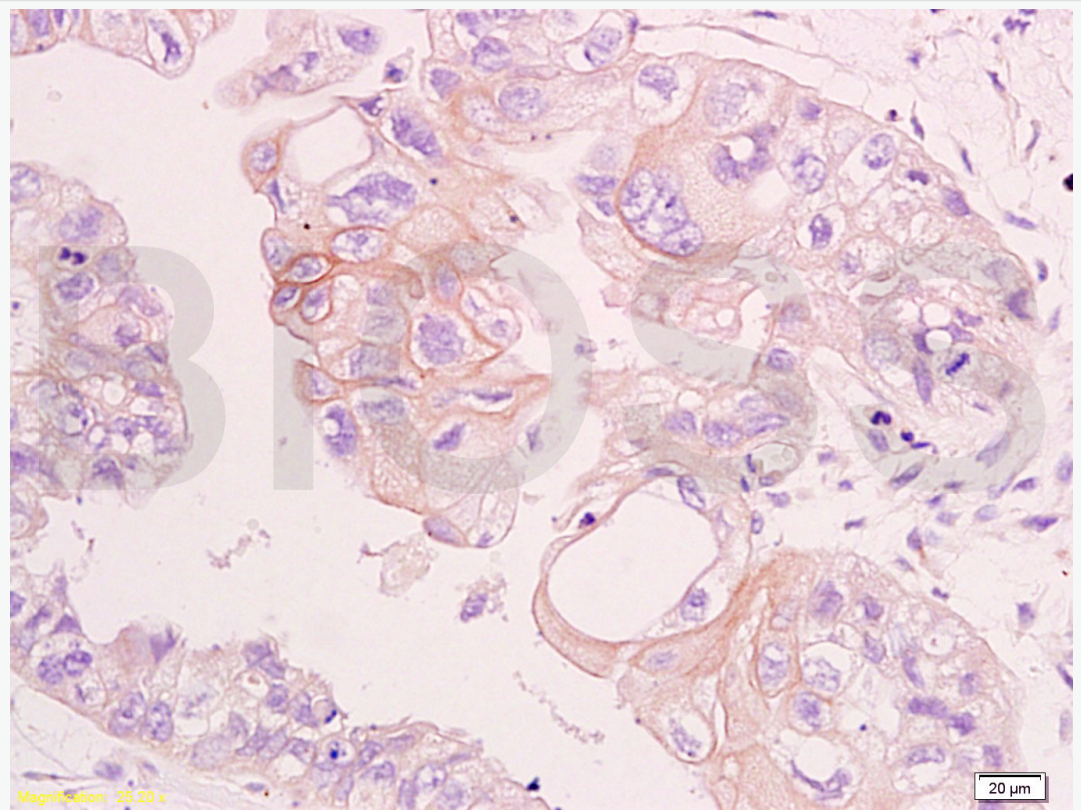
Heart(Rat) lysates, 30ug;

Primary: Anti-CD24 (SL0528R) at 1:200 dilution;

Secondary: HRP conjugated Goat-Anti-Rabbit IgG(SL0295G-HRP) at 1: 3000;

Predicted band size : 8kD

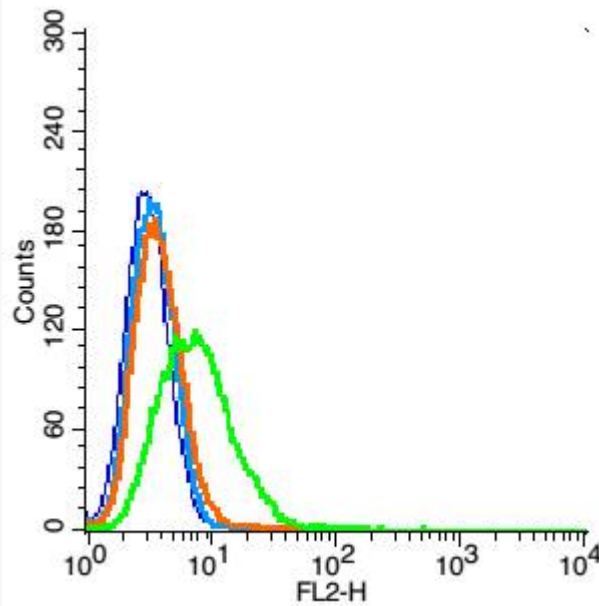
Observed band size : 35kD



Tissue/cell: human colon carcinoma; 4% Paraformaldehyde-fixed and paraffin-embedded;

Antigen retrieval: citrate buffer ( 1M, pH 6.0 ), Boiling bathing for 15min; Block endogenous peroxidase by 3% Hydrogen peroxide for 30min; Blocking buffer (normal goat serum,C-0005) at 37°C for 20 min;

Incubation: Anti-CD24 Polyclonal Antibody, Unconjugated(SL0528R) 1:200, overnight at 4°C, followed by conjugation to the secondary antibody(SP-0023) and DAB(C-0010) staining



Blank control: A549 (blue).

Primary Antibody:Rabbit Anti-CD24 antibody(SL0528R), Dilution: 1 $\mu$ g in 100  $\mu$ L 1X PBS containing 0.5% BSA;

Isotype Control Antibody: Rabbit IgG(orange) ,used under the same conditions );

Secondary Antibody: Goat anti-rabbit IgG-PE(white blue), Dilution: 1:200 in 1 X PBS containing 0.5% BSA.

#### Protocol

The cells were fixed with 2% paraformaldehyde (10 min) . Primary antibody (SL0528R, 1 $\mu$ g /1x10<sup>6</sup> cells) were incubated for 30 min on the ice, followed by 1 X PBS containing 0.5% BSA + 1 0% goat serum (15 min) to block non-specific protein-protein interactions. Then the Goat Anti-rabbit IgG/PE antibody was added into the blocking buffer mentioned above to react with the primary antibody



SunLong Biotech Co.,LTD  
Tel: 0086-571-56623320 Fax:0086-571-56623318  
E-mail:sales@sunlongbiotech.com  
www.sunlongbiotech.com

---

at 1/200 dilution for 30 min on ice. Acquisition of 20,000 events was performed.