

## Rabbit Anti-CD10 antibody

SL0527R

**Product Name** CD10

**Chinese Name** CD10 抗体

**Alias** NEP\_HUMAN; Neprilysin; MME; membrane metalloendopeptidase; NEP; SFE; CD10; CALLA; CMT2T; SCA43; Atriopeptidase; Common acute lymphocytic leukemia antigen; CALLA; Enkephalinase; Neutral endopeptidase 24.11; Neutral endopeptidase; Skin fibroblast elastase;

**Research Area** Tumour Cell biology immunology Stem cells Cell Surface Molecule Cell type markers lymphocyte b-lymphocyte

**Immunogen Species** Rabbit

**Clonality** Polyclonal

**React Species** Human,Rat(predicted:Mouse)

**Applications** WB=1:500-2000 (Paraffin sections need antigen repair)  
not yet tested in other applications.  
optimal dilutions/concentrations should be determined by the end user.

**Theoretical molecular weight** 82kDa

**Detection molecular weight** 100kDa

**Cellular localization** The cell membrane

**Form** Liquid

**Concentration** 1mg/ml

**immunogen** KLH conjugated synthetic peptide derived from human CD10: 501-600/750  
<Extracellular>

**Lsotype** IgG

**Purification** affinity purified by Protein A

**Buffer Solution** Human,Rat(predicted:Mouse)1M TBS(pH7.4) with 1% BSA,  
Human,Rat(predicted:Mouse)3% Proclin300 and 50% Glycerol.



---

<b>Storage</b>	Shipped at 4°C. Store at -20 °C for one year. Avoid repeated freeze/thaw cycles.
<b>Attention</b>	This product as supplied is intended for research use only, not for use in human, therapeutic or diagnostic applications.
<b>PubMed</b>	<a href="#">PubMed</a> The protein encoded by this gene is a type II transmembrane glycoprotein and a common acute lymphocytic leukemia antigen that is an important cell surface marker in the diagnosis of human acute lymphocytic leukemia (ALL). The encoded protein is present on leukemic cells of pre-B phenotype, which represent 85% of cases of ALL. This protein is not restricted to leukemic cells, however, and is found on a variety of normal tissues. The protein is a neutral endopeptidase that cleaves peptides at the amino side of hydrophobic residues and inactivates several peptide hormones including glucagon, enkephalins, substance P, neurotensin, oxytocin, and bradykinin. [provided by RefSeq, Aug 2017]  <b>Function:</b> Thermolysin-like specificity, but is almost confined on acting on polypeptides of up to 30 amino acids. Biologically important in the destruction of opioid peptides such as Met- and Leu-enkephalins by cleavage of a Gly-Phe bond. Able to cleave angiotensin-1, angiotensin-2 and angiotensin 1-9. Involved in the degradation of atrial natriuretic factor (ANF). Displays UV-inducible elastase activity toward skin preelastic and elastic fibers.  <b>Subcellular Location:</b> Cell membrane; Single-pass type II membrane protein.
<b>Product Detail</b>	<b>Post-translational modifications:</b> Myristoylation is a determinant of membrane targeting. Glycosylation at Asn-628 is necessary both for surface expression and neutral endopeptidase activity.  <b>Similarity:</b> Belongs to the peptidase M13 family.  <b>SWISS:</b> P08473  <b>Gene ID:</b> 4311  <b>Database links:</b> <a href="#">Entrez Gene: 4311</a> Human <a href="#">Entrez Gene: 17380</a> Mouse <a href="#">Entrez Gene: 24590</a> Rat

[Omim: 120520](#) Human

[SwissProt: P08473](#) Human

[SwissProt: Q61391](#) Mouse

[SwissProt: P07861](#) Rat

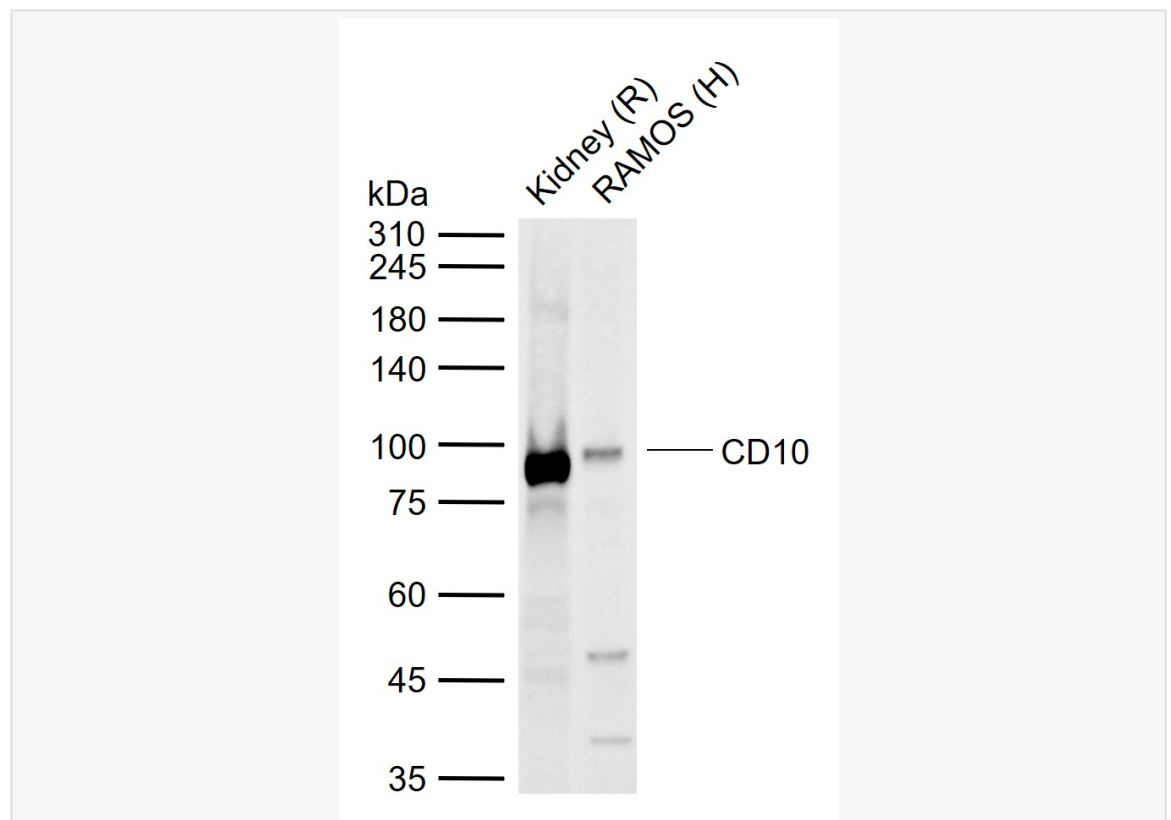
[Unigene: 307734](#) Human

[Unigene: 296022](#) Mouse

[Unigene: 33598](#) Rat

CD10 即共同型急性 lymphocyte 白血病抗原,是 II 型跨膜 glycoprotein.CD10 表达于早期 Blymphocyte,某些粒性白细胞,骨髓基质细胞,部分上皮组织及其起源的 Tumour 细胞中也有表达.主要应用于某些恶性淋巴瘤和白血病的分型.CD10 是一种 94kD 的锌依赖性 The cell membrane 金属 Binding protein,参与细胞神经肽和激素肽的后分泌过程。它广泛地分布于肾、肝、小肠、胎盘、脉络膜丛、脑腺、腺皮质和白细胞, CD10 是生发中心细胞及所致淋巴瘤的 Maker。

Product  
Picture



Sample:

Lane 1: Rat Kidney tissue lysates

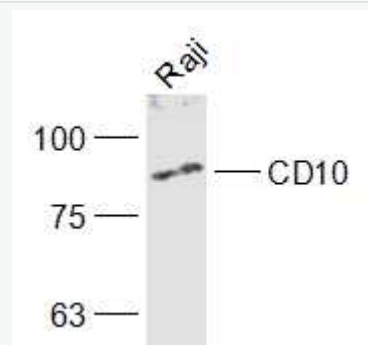
Lane 2: Human RAMOS cell lysates

Primary: Anti-CD10 (SL0527R) at 1/1000 dilution

Secondary: IRDye800CW Goat Anti-Rabbit IgG at 1/20000 dilution

Predicted band size: 82 kDa

Observed band size: 100 kDa



Sample:

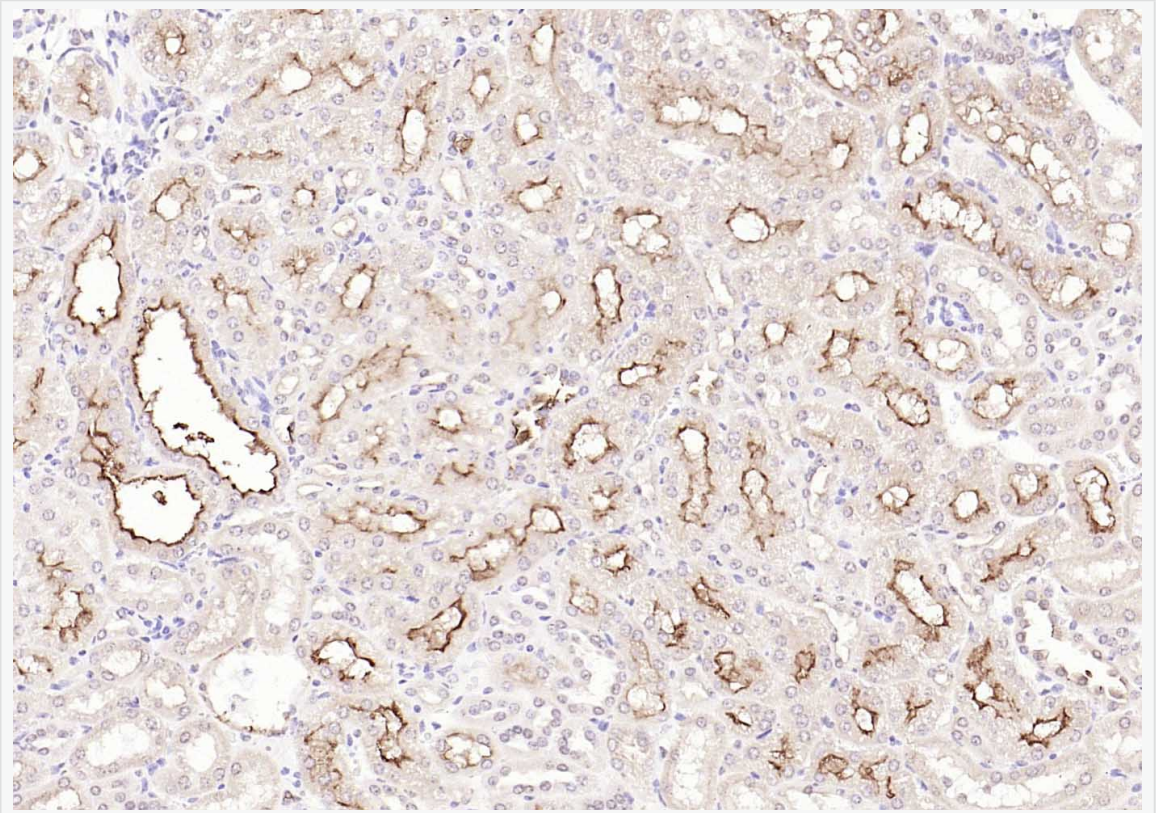
Raji(Human) Cell Lysate at 30 ug

Primary: Anti-CD10 (SL0527R) at 1/1000 dilution

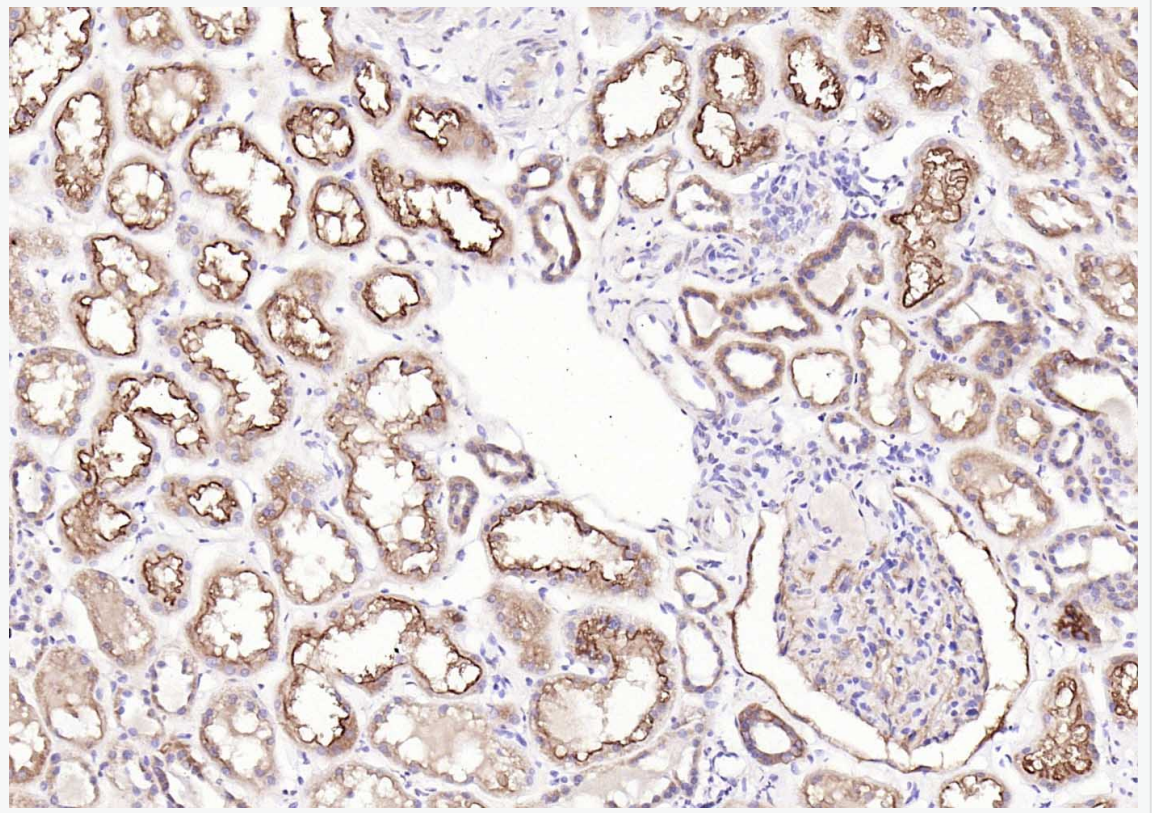
Secondary: IRDye800CW Goat Anti-Rabbit IgG at 1/20000 dilution

Predicted band size: 82 kD

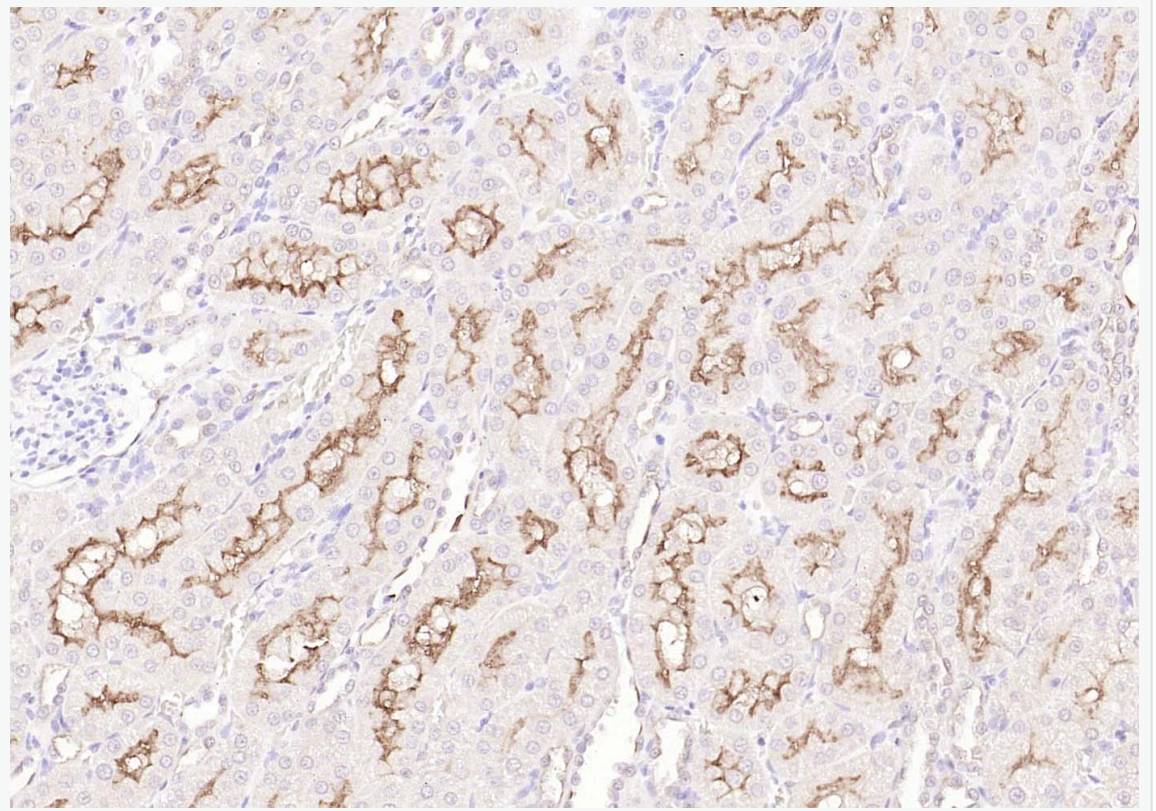
Observed band size: 82 kD



Paraformaldehyde-fixed, paraffin embedded (mouse kidney); Antigen retrieval by boiling in sodium citrate buffer (pH6.0) for 15min; Block endogenous peroxidase by 3% hydrogen peroxide for 20 minutes; Blocking buffer (normal goat serum) at 37°C for 30min; Incubation with (CD10) Polyclonal Antibody, Unconjugated (SL0527R) at 1:200 overnight at 4°C, followed by operating according to SP Kit(Rabbit) (sp-0023) instructions and DAB staining.



Paraformaldehyde-fixed, paraffin embedded (human kidney); Antigen retrieval by boiling in sodium citrate buffer (pH6.0) for 15min; Block endogenous peroxidase by 3% hydrogen peroxide for 20 minutes; Blocking buffer (normal goat serum) at 37°C for 30min; Incubation with (CD10) Polyclonal Antibody, Unconjugated (SL0527R) at 1:200 overnight at 4°C, followed by operating according to SP Kit(Rabbit) (sp-0023) instructions and DAB staining.



Paraformaldehyde-fixed, paraffin embedded (rat kidney); Antigen retrieval by boiling in sodium citrate buffer (pH6.0) for 15min; Block endogenous peroxidase by 3% hydrogen peroxide for 20 minutes; Blocking buffer (normal goat serum) at 37°C for 30min; Incubation with (CD10) Polyclonal Antibody, Unconjugated (SL0527R) at 1:200 overnight at 4°C, followed by operating according to SP Kit(Rabbit) (sp-0023) instructions and DAB staining.