

Rabbit Anti-PRL antibody

SL0508R

Product Name PRL

Chinese Name 泌乳素抗体

Alias Luteotropic Hormone; Mamotropin; OTTHUMP00000017727; PRL; Prolactin; Prolactin precursor; PRL_HUMAN.

Research Area Cell biology Signal transduction Growth factors and hormones Kinases and Phosphatases Endocrinopathy

Immunogen Species Rabbit

Clonality Polyclonal

React Species Human

Applications WB=1:500-2000,IHC-P=1:100-500,IHC-F=1:100-500,IF=1:100-500 (Paraffin sections need antigen repair)
not yet tested in other applications.
optimal dilutions/concentrations should be determined by the end user.

Theoretical molecular weight 24kDa

Cellular localization Secretory protein

Form Liquid

Concentration 1mg/ml

immunogen KLH conjugated synthetic peptide derived from human PRL: 165-227/227

Lsotype IgG

Purification affinity purified by Protein A

Buffer Solution 1M TBS(pH7.4) with 1% BSA, 3% Proclin300 and 50% Glycerol.

Storage Shipped at 4°C. Store at -20 °C for one year. Avoid repeated freeze/thaw cycles.

Attention This product as supplied is intended for research use only, not for use in human, therapeutic or diagnostic applications.

PubMed [PubMed](#)

Product This gene encodes the anterior pituitary hormone prolactin. This secreted hormone is a

Detail

growth regulator for many tissues, including cells of the immune system. It may also play a role in cell survival by suppressing apoptosis, and it is essential for lactation. Alternative splicing results in multiple transcript variants that encode the same protein. [provided by RefSeq, Aug 2011].

Function:

Prolactin acts primarily on the mammary gland by promoting lactation.

Subcellular Location:

Secreted.

Similarity:

Belongs to the somatotropin/prolactin family.

SWISS:

P01236

Gene ID:

5617

Database links:

[Entrez Gene: 5617](#) Human

[Entrez Gene: 19109](#) Mouse

[Entrez Gene: 24683](#) Rat

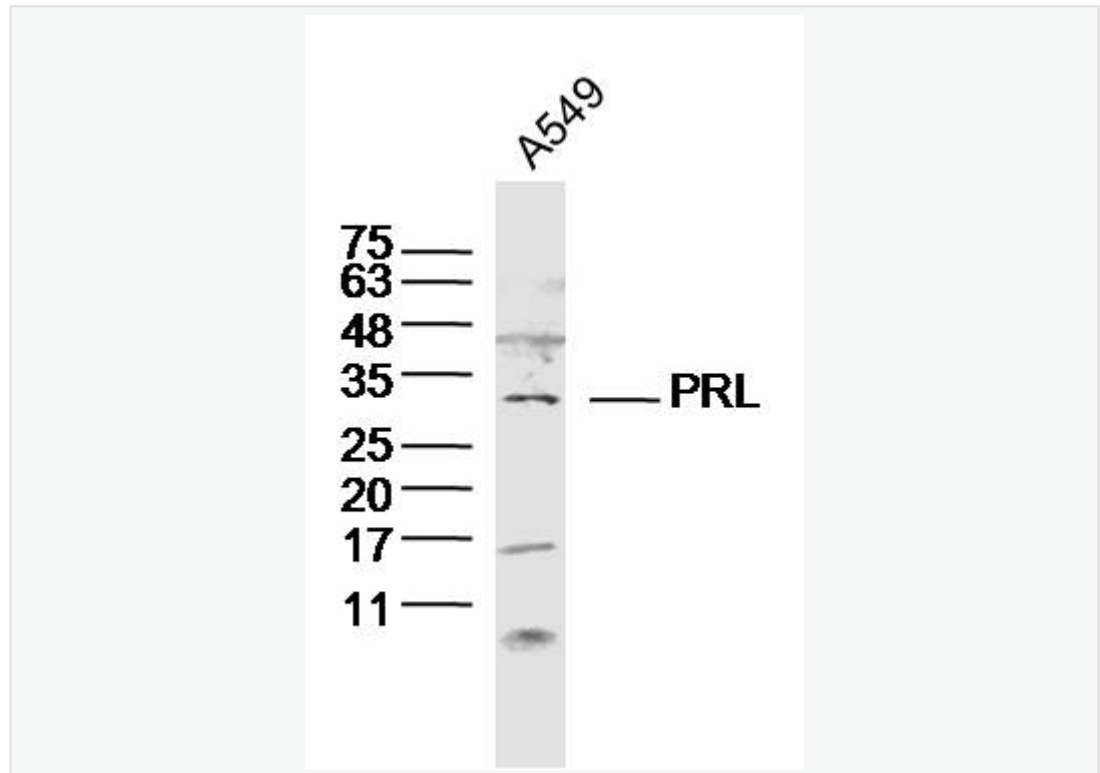
[Omim: 176760](#) Human

[SwissProt: P01236](#) Human

[SwissProt: P06879](#) Mouse

[SwissProt: P01237](#) Rat

**Product
Picture**



Sample:

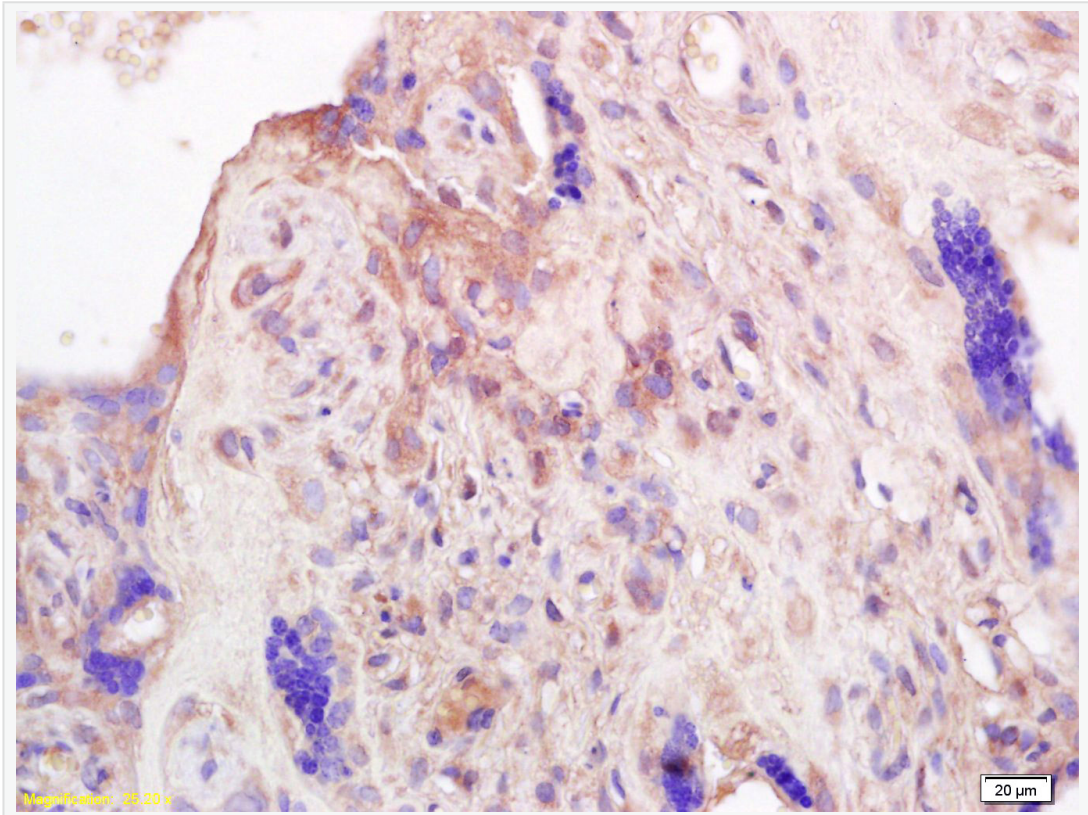
A549 cell(human) Lysate at 40 ug

Primary: Anti-PRL (SL0508R) at 1/300 dilution

Secondary: IRDye800CW Goat Anti-Rabbit IgG at 1/20000 dilution

Predicted band size: 24kD

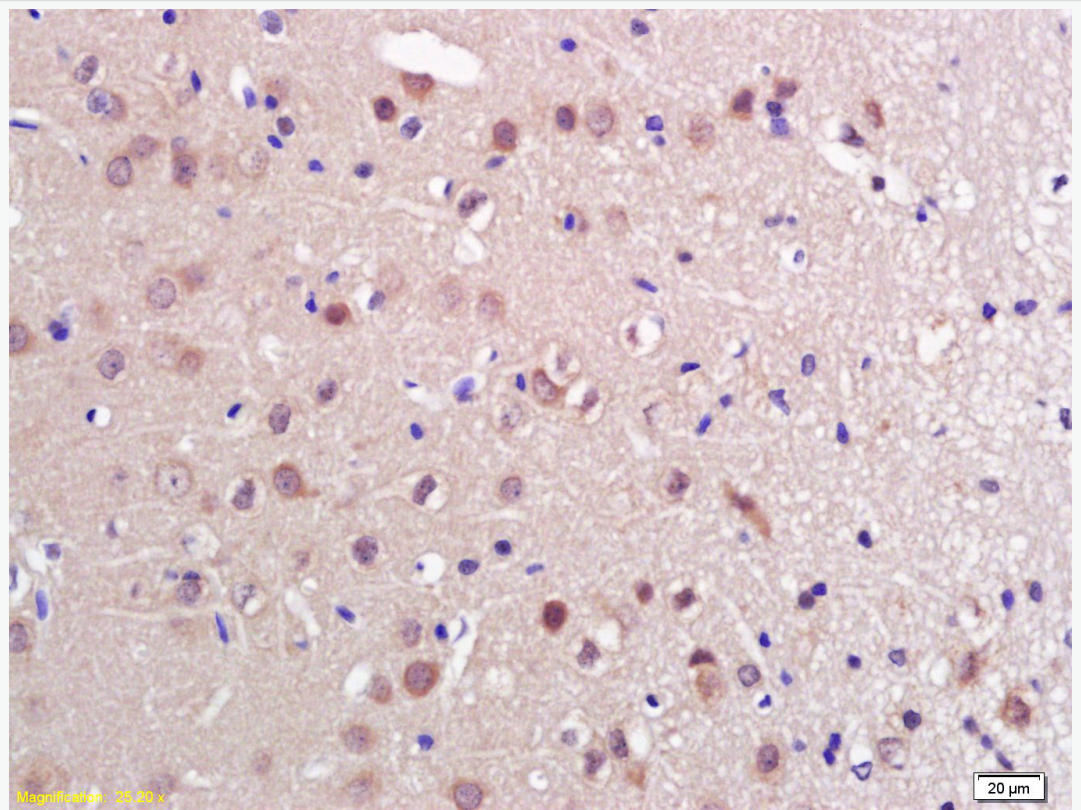
Observed band size: 30 kD



Tissue/cell: human placenta tissue; 4% Paraformaldehyde-fixed and paraffin-embedded;

Antigen retrieval: citrate buffer (1M, pH 6.0), Boiling bathing for 15min; Block endogenous peroxidase by 3% Hydrogen peroxide for 30min; Blocking buffer (normal goat serum,C-0005) at 37°C for 20 min;

Incubation: Anti-PRL Polyclonal Antibody, Unconjugated(SL0508R) 1:200, overnight at 4°C, followed by conjugation to the secondary antibody(SP-0023) and DAB(C-0010) staining



Tissue/cell: rat brain tissue; 4% Paraformaldehyde-fixed and paraffin-embedded;
Antigen retrieval: citrate buffer (1M, pH 6.0), Boiling bathing for 15min; Block
endogenous peroxidase by 3% Hydrogen peroxide for 30min; Blocking buffer
(normal goat serum,C-0005) at 37°C for 20 min;
Incubation: Anti-PRL Polyclonal Antibody, Unconjugated(SL0508R) 1:200,
overnight at 4°C, followed by conjugation to the secondary antibody(SP-0023)
and DAB(C-0010) staining