

Rabbit Anti-BrdU (Proliferation Marker)antibody

SL0489R

Product Name	BrdU(Proliferation Marker)
Chinese Name	5-溴脱氧尿嘧啶核苷（增殖 Marker）抗体
Alias	Bromodeoxyuridine; Bromodeoxyuridine; 5-Bromo-2'-deoxyuridine; 5-BrdU; Proliferation Marker; 5-Bromo-2-deoxyUridine.
Product Type	Small molecule anti
Research Area	Cell biology Cell type markers
Immunogen Species	Rabbit
Clonality	Polyclonal
React Species	Species independent
Applications	ELISA=1:5000-10000（Paraffin sections need antigen repair） not yet tested in other applications. optimal dilutions/concentrations should be determined by the end user.
Theoretical molecular weight	0.3071kDa
Cellular localization	The nucleus
Form	Liquid
Concentration	1mg/ml
immunogen	KLH conjugated Brdu
Lsotype	IgG
Purification	affinity purified by Protein A
Buffer Solution	1M TBS(pH7.4) with 1% BSA, 3% Proclin300 and 50% Glycerol.
Storage	Shipped at 4°C. Store at -20 °C for one year. Avoid repeated freeze/thaw cycles.
Attention	This product as supplied is intended for research use only, not for use in human, therapeutic or diagnostic applications.
PubMed	PubMed

The immunocytochemical detection of bromodeoxyuridine (BrdU) incorporated into DNA is a powerful tool to study the cytokinetics of normal and neoplastic cells. In vitro or in vivo labeling of tumor cells with the thymidine analogue BrdU and the subsequent detection of incorporated BrdU with specific anti-BrdU monoclonal antibodies is an accurate and comprehensive method to quantitate the degree of DNA-synthesis.

BrdU is incorporated into the newly synthesized DNA of S-phase cells may provide an estimate for the fraction of cells in S-phase. Also dynamic proliferative information such as the S-phase transit rate and the potential doubling time can be obtained, by means of bivariate BrdU/DNA flow cytometric analysis

Subcellular Location:

Nuclear.

Product Detail

SWISS:

N/A

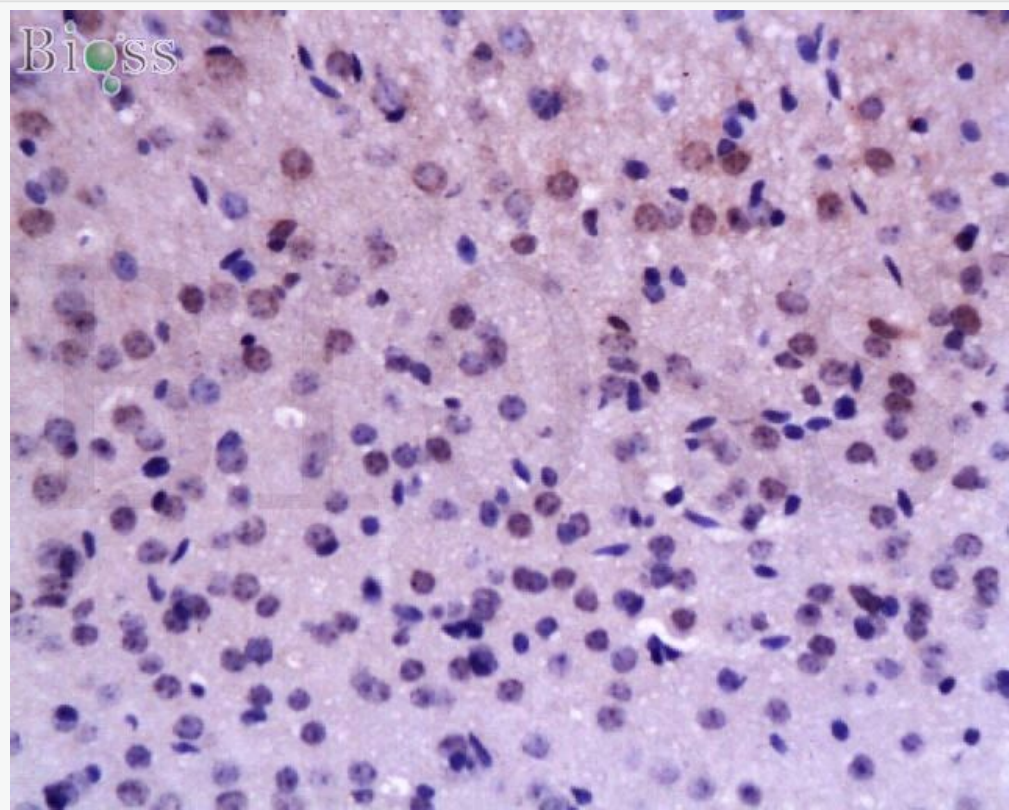
CAS:

59-14-3

Proliferation Marker

BrdU（溴化脱氧尿嘧啶核苷）可以在体内和体外掺入到处于 S 期的细胞所合成的 DNA 链中。此抗体可以与掺入到任何种属细胞中的 BrdU 反应，与碘脱氧尿嘧啶有 React Species，标记掺有 BrdU 的 S 期细胞，主要用于研究各种 不同的因素对正常/Tumour 组织的细胞增殖及动力学的研究。用 FITC 标记的抗 BrdU IgG 可用于流式细胞术定量检测增值细胞。

**Product
Picture**



Tissue/cell: rat brain tissue; 4% Paraformaldehyde-fixed and paraffin-embedded;

Antigen retrieval: citrate buffer (1M, pH 6.0), Boiling bathing for 15min;

Block endogenous peroxidase by 3% Hydrogen peroxide for 30min;

Blocking buffer (normal goat serum,C-0005) at 37°C for 20 min;

Incubation: Anti-BrdU Polyclonal Antibody, Unconjugated(SL0489R) 1:200, overnight at 4°C, followed by conjugation to the secondary antibody(SP-0023) and DAB(C-0010) staining