

Rabbit Anti-CXorf36 antibody

SL0488R

Product Name CXorf36

Chinese Name 脱羧酶蛋白体 36 抗体

Alias chromosome X open reading frame 36, isoform CRA_a ; uncharacterized protein Cxorf36 precursor; PRO3743; EPQL1862; FLJ14103; FLJ55198; FLJ55198, bA435K1.1; 4930578C19Rik; DKFZp313K0825; CXorf36; DIA1R_HUMAN; DIA1R; PRO3743; EPQL1862; bA435K1.1; 4930578C19Rik.

Research Area Tumour

Immunogen Species Rabbit

Clonality Polyclonal

React Species Human, (predicted: Mouse, Rat, Dog, Cow,)

Applications IHC-P=1:100-500,IHC-F=1:100-500,IF=1:100-500 (Paraffin sections need antigen repair)
not yet tested in other applications.
optimal dilutions/concentrations should be determined by the end user.

Theoretical molecular weight 20/45kDa

Cellular localization cytoplasmic

Form Liquid

Concentration 1mg/ml

immunogen KLH conjugated synthetic peptide derived from human CXorf36: 91-182/182

Lsotype IgG

Purification affinity purified by Protein A

Buffer Solution 1M TBS(pH7.4) with 1% BSA, 3% Proclin300 and 50% Glycerol.

Storage Shipped at 4°C. Store at -20 °C for one year. Avoid repeated freeze/thaw cycles.

Attention This product as supplied is intended for research use only, not for use in human, therapeutic or diagnostic applications.

PubMed

[PubMed](#)

The X and Y chromosomes are the human sex chromosomes. Chromosome X consists of about 153 million base pairs and nearly 1,000 genes. The combination of an X and Y chromosome lead to normal male development while two copies of X lead to normal female development. There are a number of conditions related to an unusual number and combination of sex chromosomes being inherited. More than one copy of the X chromosome with a Y chromosome causes Klinefelter's syndrome. A single copy of X alone leads to Turner's syndrome. More than 2 copies of the X chromosome, in the absence of a Y chromosome, is known as Triple X syndrome. Color blindness, hemophilia, and Duchenne muscular dystrophy are well known X chromosome-linked conditions which affect males more frequently as males carry a single X chromosome. The CXorf36 gene product has been provisionally designated CXorf36 pending further characterization.

Subcellular Location:

Secreted (Potential).

DISEASE:

Note=Genetic variations in CXorf36 may be associated with susceptibility to autism.

Similarity:

Belongs to the DIA1 family.

Product Detail

SWISS:

Q9H7Y0

Gene ID:

79742

Database links:

[Entrez Gene: 79742](#) Human

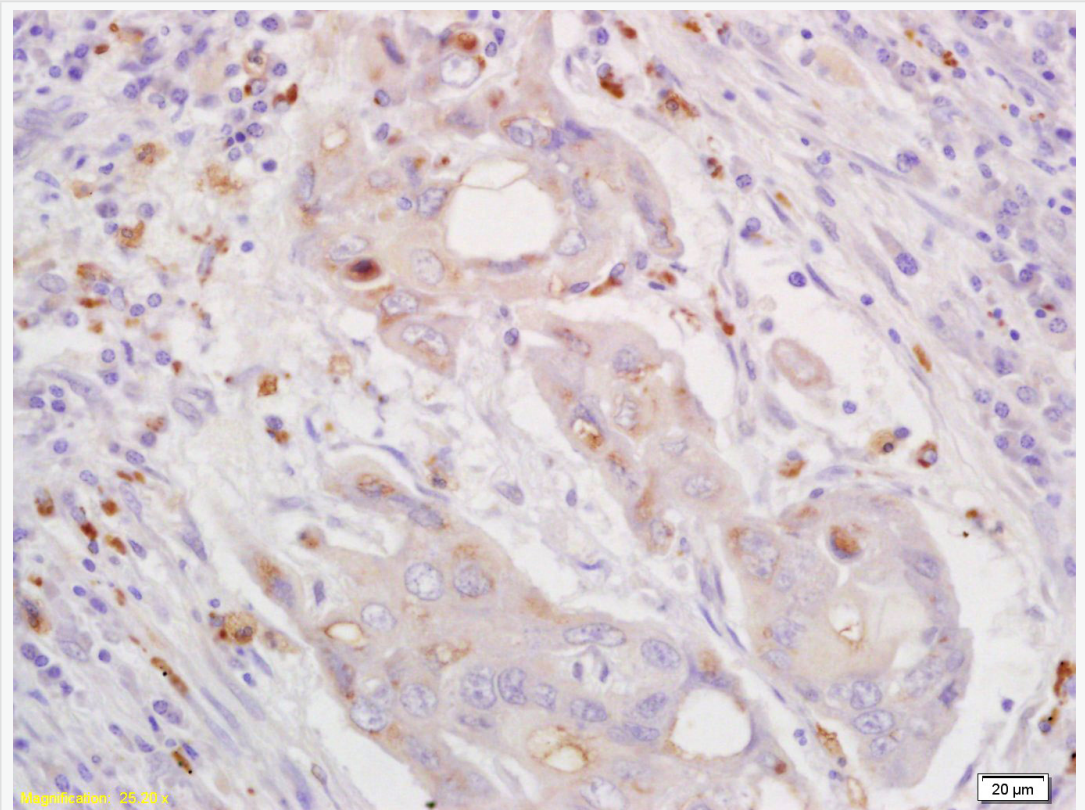
[SwissProt: Q9H7Y0](#) Human

[Unigene: 98321](#) Human

经研究：CXorf36 蛋白是通过其水解酶活性，在 Tumour 的发生、生长或侵袭过程中发挥重要作用。对关于 CXorf36 基因功能的研究,其在 Tumour 组织中的定位、对 Cell biology 学功能的影响需进一步研究。

文献参考：[肾癌相关基因 CXorf36 的克隆及亚定位研究](#)

**Product
Picture**



Tissue/cell: human lung carcinoma; 4% Paraformaldehyde-fixed and paraffin-embedded;

Antigen retrieval: citrate buffer (1M, pH 6.0), Boiling bathing for 15min; Block endogenous peroxidase by 3% Hydrogen peroxide for 30min; Blocking buffer (normal goat serum,C-0005) at 37°C for 20 min;

Incubation: Anti-CXorf36 Polyclonal Antibody, Unconjugated(SL0488R) 1:200, overnight at 4°C, followed by conjugation to the secondary antibody(SP-0023) and DAB(C-0010) staining