

Rabbit Anti-SLC6A19 antibody

SL0478R

Product Name SLC6A19

Chinese Name 钾依赖钠钙 Exchange protein6 抗体

Alias B(0)AT1; Sodium dependent neutral amino acid transporter B(0); Solute carrier family 6 member 19; System B(0) neutral amino acid transporter.

Research Area Neurobiology Channel protein The cell membrane 受体

Immunogen Species Rabbit

Clonality Polyclonal

React Species Human, (predicted: Mouse, Rat, Dog, Pig, Rabbit,)

IHC-P=1:100-500,IHC-F=1:100-500,IF=1:100-500 (Paraffin sections need antigen repair)

Applications not yet tested in other applications.
optimal dilutions/concentrations should be determined by the end user.

Theoretical molecular weight 70kDa

Cellular localization The cell membrane

Form Liquid

Concentration 1mg/ml

immunogen KLH conjugated synthetic peptide derived from human SLC6A19: 31-100/634 <Cytoplasmic>

Lsotype IgG

Purification affinity purified by Protein A

Buffer Solution 1M TBS(pH7.4) with 1% BSA, 3% Proclin300 and 50% Glycerol.

Storage Shipped at 4°C. Store at -20 °C for one year. Avoid repeated freeze/thaw cycles.

Attention This product as supplied is intended for research use only, not for use in human, therapeutic or diagnostic applications.

PubMed [PubMed](#)

Transporter that mediates epithelial resorption of neutral amino acids across the apical membrane of epithelial cells in the kidney and intestine. It appears that leucine is the preferred substrate, but all large neutral non-aromatic L-amino acids bind to this transporter. Uptake of leucine is sodium-dependent. In contrast to other members of the neurotransmitter transporter family, does not appear to be chloride-dependent.

Subcellular Location:

Membrane; Multi-pass membrane protein (Probable).

Tissue Specificity:

Abundantly expressed in kidney, but not in intestine.

Similarity:

Belongs to the sodium:neurotransmitter symporter (SNF) (TC 2.A.22) family. SLC6A19 subfamily.

**Product
Detail**

SWISS:

Q695T7

Gene ID:

340024

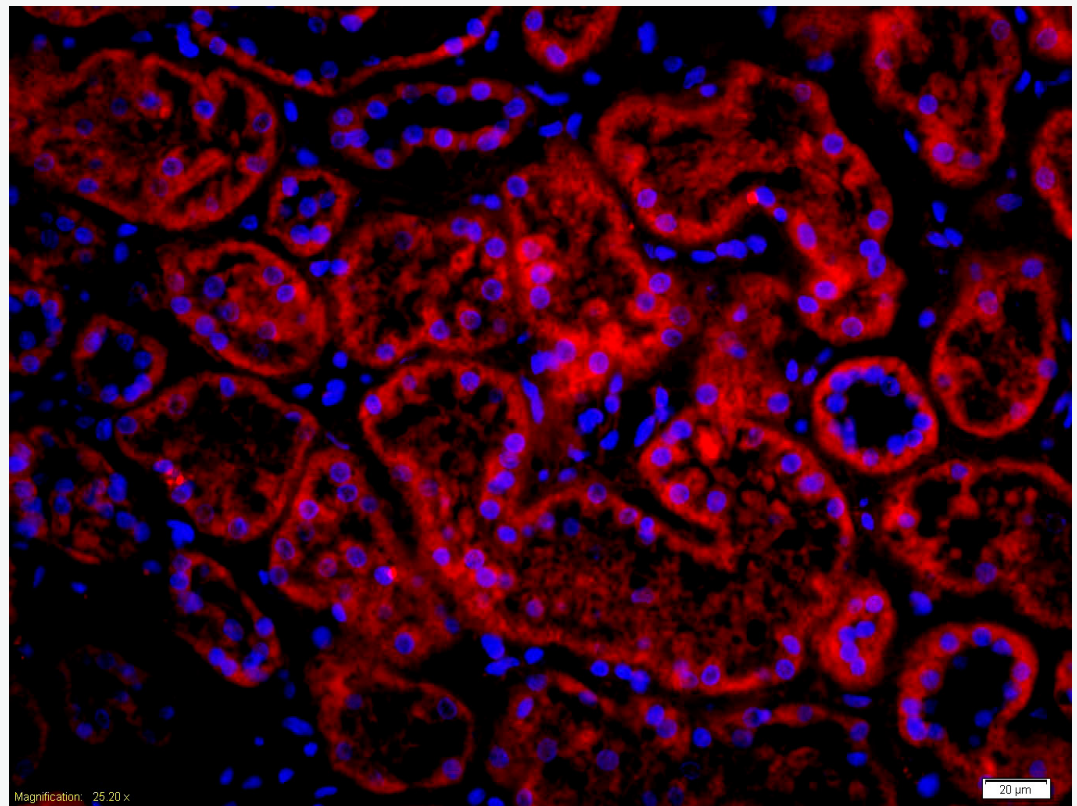
Database links:

[Entrez Gene: 340024](#) Human

[SwissProt: Q695T7](#) Human

主要用于：胰岛素瘤细胞与胰岛素分泌关系方面的研究，主要在人主动脉 endothelial cells 中表达,并且受到葡萄糖的调控。

**Product
Picture**



Tissue/cell: human kidney tissue;4% Paraformaldehyde-fixed and paraffin-embedded;

Antigen retrieval: citrate buffer (1M, pH 6.0), Boiling bathing for 15min;

Blocking buffer (normal goat serum,C-0005) at 37°C for 20 min;

Incubation: Anti-SLC6A19 Polyclonal Antibody, Unconjugated(SL0478R) 1:200, overnight at 4°C; The secondary antibody was Goat Anti-Rabbit IgG, Cy3 conjugated(SL0295G-Cy3)used at 1:200 dilution for 40 minutes at 37°C.

DAPI(5ug/ml,blue,C-0033) was used to stain the cell nuclei