

Rabbit Anti-SLC1A5 antibody

SL0473R

Product Name	SLC1A5
Chinese Name	溶质携带物家族-1 抗体
Alias	(glutamate transporter), member 7; R16; AAAT; ATBO; M7V1; RDRC; ASCT2; M7VS1; FLJ31068; Baboon M7 virus receptor; RD114/simian type D retrovirus receptor; Sodium-dependent neutral amino acid transporter type 2; Solute carrier family 1 member 5; Neutral amino acid transporter B(0); ATB(0); RD114/simian type D retrovirus receptor; Sodium-dependent neutral amino acid transporter type 2; AAAT_HUMAN.
Research Area	Signal transduction
Immunogen Species	Rabbit
Clonality	Polyclonal
React Species	Human, IHC-P=1:100-500,IHC-F=1:100-500,IF=1:100-500,ELISA=1:5000-10000 (Paraffin sections need antigen repair)
Applications	not yet tested in other applications. optimal dilutions/concentrations should be determined by the end user.
Theoretical molecular weight	56kDa
Cellular localization	The cell membrane
Form	Liquid
Concentration	1mg/ml
immunogen	KLH conjugated synthetic peptide derived from human SLC1A5: 465-515/541
Lsotype	IgG
Purification	affinity purified by Protein A
Buffer Solution	1M TBS(pH7.4) with 1% BSA, 3% Proclin300 and 50% Glycerol.
Storage	Shipped at 4°C. Store at -20 °C for one year. Avoid repeated freeze/thaw cycles.
Attention	This product as supplied is intended for research use only, not for use in

human, therapeutic or diagnostic applications.

PubMed

[PubMed](#)

solute carrier family 1 (neutral amino acid transporter), member 5. mediates infections of RD114 feline endogenous virus, baboon endogenous virus and type D simian retroviruses; baboon M7 virus receptor; RD114 virus receptor; neutral amino acid transporter B.

Function:

Has a broad substrate specificity, a preference for zwitterionic amino acids, and a sodium-dependence. It accepts as substrates all neutral amino acids, including glutamine, asparagine, and branched-chain and aromatic amino acids, and excludes methylated amino acids, anionic amino acids, and cationic amino acids. Acts as a cell surface receptor for feline endogenous virus RD114, baboon M7 endogenous virus and type D simian retroviruses.

Subcellular Location:

Membrane; Multi-pass membrane protein (Probable). Melanosome.

Note=Identified by mass spectrometry in melanosome fractions from stage I to stage IV.

Tissue Specificity:

Placenta, lung, skeletal muscle, kidney, pancreas, and intestine.

Product Detail

Similarity:

Belongs to the sodium:dicarboxylate (SDF) symporter (TC 2.A.23) family. SLC1A5 subfamily.

SWISS:

Q15758

Gene ID:

6510

Database links:

[Entrez Gene: 6510](#) Human

[Entrez Gene: 20514](#) Mouse

[Entrez Gene: 292657](#) Rat

[Omim: 109190](#) Human

[SwissProt: Q15758](#) Human

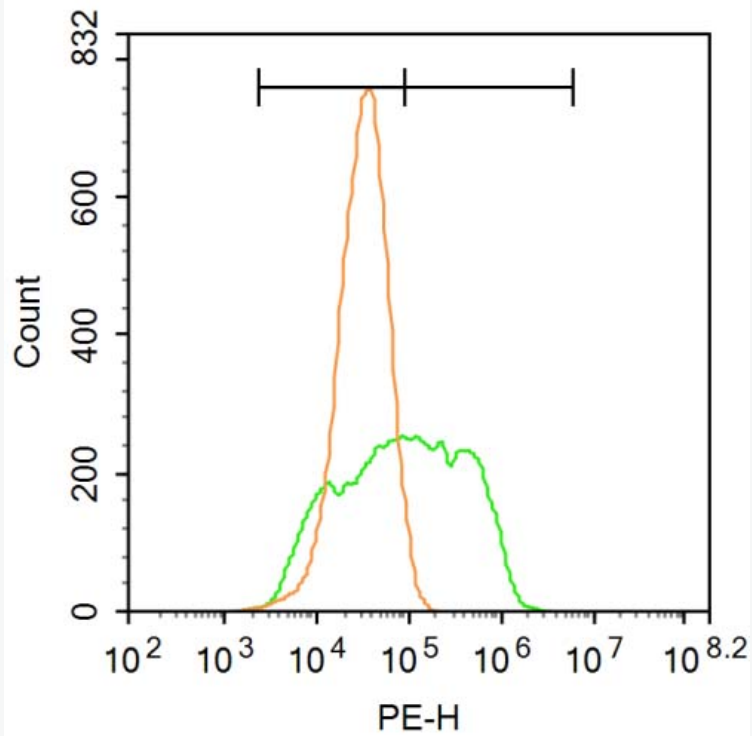
[SwissProt: P51912](#) Mouse

[SwissProt: Q9Z1J7](#) Rat

[Unigene: 631582](#) Human

[Unigene: 1056](#) Mouse

Product Picture



Blank control: A549.

Primary Antibody (green line): Rabbit Anti-SLC1A5 antibody (SL0473R)

Dilution: 3 μ g /10⁶ cells;

Isotype Control Antibody (orange line): Rabbit IgG .

Secondary Antibody : Goat anti-rabbit IgG-PE

Dilution: 1 μ g /test.

Protocol

The cells were incubated in 5%BSA to block non-specific protein-protein interactions for 30 min at room temperature .Cells stained with Primary Antibody for 30 min at room temperature. The secondary antibody used for 40 min at room temperature. Acquisition of 20,000 events was performed.