

Rabbit Anti-NAIF1 antibody

SL0452R

Product Name	NAIF1
Chinese Name	核凋亡诱导因子蛋白 1
Alias	NAIF1 protein; nuclear apoptosis inducing factor 1; CB12-327; 2310007O20Rik; 4933440H19Rik; bA379C10.2; C9orf90; DKFZP762G199; NAIF1; RP11-379C10.2; NAIF1_HUMAN.
Research Area	Chromatin and nuclear signals
Immunogen Species	Rabbit
Clonality	Polyclonal
React Species	Human, (predicted: Mouse, Rat, Chicken, Dog, Cow, Horse,) IHC-P=1:100-500,IHC-F=1:100-500,IF=1:100-500 (Paraffin sections need antigen repair)
Applications	not yet tested in other applications. optimal dilutions/concentrations should be determined by the end user.
Theoretical molecular weight	35kDa
Cellular localization	The nucleus
Form	Liquid
Concentration	1mg/ml
immunogen	KLH conjugated synthetic peptide derived from human NAIF1: 3-85/327
Lsotype	IgG
Purification	affinity purified by Protein A
Buffer Solution	1M TBS(pH7.4) with 1% BSA, 3% Proclin300 and 50% Glycerol.
Storage	Shipped at 4°C. Store at -20 °C for one year. Avoid repeated freeze/thaw cycles.
Attention	This product as supplied is intended for research use only, not for use in human, therapeutic or diagnostic applications.
PubMed	PubMed
Product Detail	NAIF protein 1 (nuclear apoptosis inducing factor 1; CB12-327; RP-379C10.2)

belongs to the NAIF1 family. Apoptosis is a genetically determined cell suicidal pro gram that plays critical roles in many physiological and pathological processes. nuclear apoptosis-inducing factor 1 (NAIF1), overexpression of which induces apoptosis in cells. Human NAIF1 is located on chromosome 9q34.11 and encodes 327 amino acids with a homeodomain-like region and two nuclear localization signals at its N-terminal region. NAIF1 is conserved across diverse species, including human, mouse, crab-eating macaque, dog, chicken and frog, and shares no obvious homology to any known genes or proteins. Northern blot analysis revealed wide expression of NAIF1 mRNA throughout human tissues. NAIF1 was predominantly localized in the nucleus. Overexpression of NAIF1 inhibited cell growth and induced apoptosis. Furthermore, NAIF1 transfection caused both decreases in mitochondrial membrane potential and caspase-3 activation. In summary, NAIF1 is a nuclear protein that induces apoptosis when overexpressed.

Function:

Induces apoptosis.

Subunit:

Interacts with HARB11.

Subcellular Location:

Nucleus.

Tissue Specificity:

Widely expressed.

Similarity:

Belongs to the NAIF1 family.

SWISS:

Q69YI7

Gene ID:

203245

Database links:

[Entrez Gene: 510689](#) Cow

[Entrez Gene: 203245](#) Human

[Entrez Gene: 71254](#) Mouse

[Omim: 610673](#) Human

[SwissProt: A7MBH3](#) Cow

[SwissProt: Q9BE21](#) Cynomolgus Monkey

[SwissProt: Q69YI7](#) Human

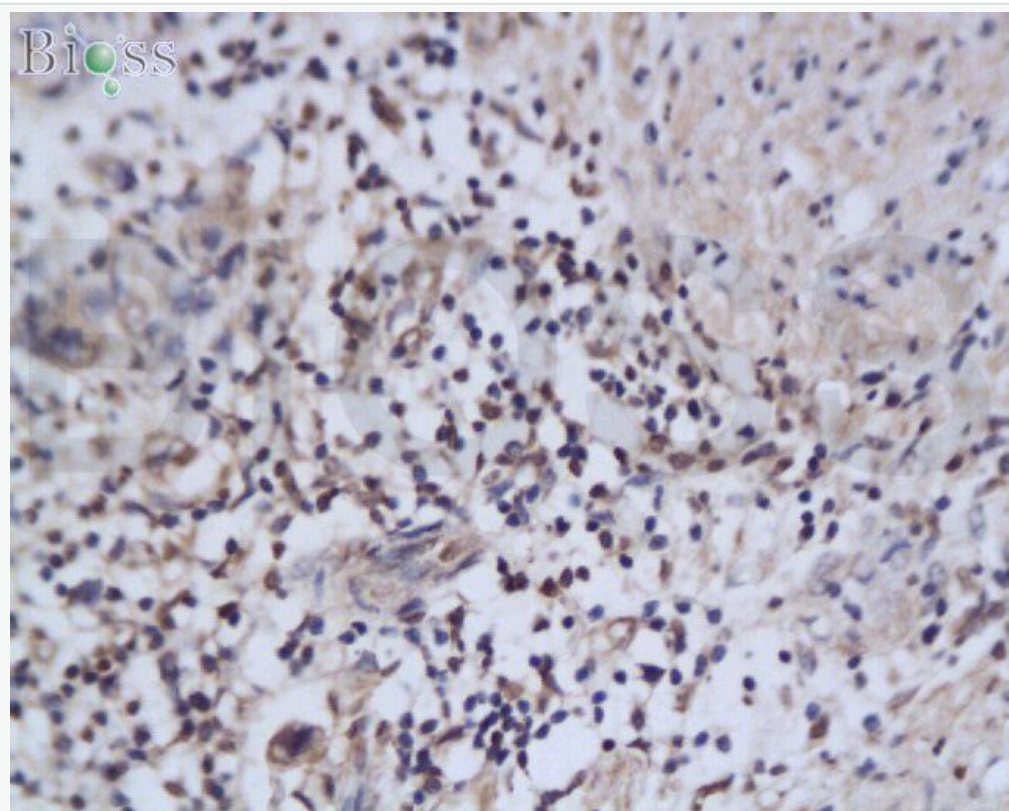
[SwissProt: Q6PFD7](#) Mouse

[Unigene: 373606](#) Human

[Unigene: 102341](#) Mouse

NAIF1 protein(CB12-327)是最新发现的大肠癌 Marker 他抑制 NF κ B, NFAT, AP-1 活性, 并诱导细胞凋亡。

**Product
Picture**



Tissue/cell: human colon tissue; 4% Paraformaldehyde-fixed and paraffin-embedded;

Antigen retrieval: citrate buffer (1M, pH 6.0), Boiling bathing for 15min;

Block endogenous peroxidase by 3% Hydrogen peroxide for 30min;

Blocking buffer (normal goat serum,C-0005) at 37°C for 20 min;

Incubation: Anti-NAIF1 Polyclonal Antibody, Unconjugated(SL0452R)

1:200, overnight at 4°C, followed by conjugation to the secondary antibody(SP-0023) and DAB(C-0010) staining