

## Rabbit Anti-FOXE1 antibody

SL0446R

<b>Product Name</b>	FOXE1
<b>Chinese Name</b>	甲状腺转录因子-2 抗体
<b>Alias</b>	FKH L15; FKHL 15; FKHL15; Forkhead (Drosophila) like 15; forkhead (Drosophila)-like 15; forkhead box E1; Forkhead box E2; Forkhead box protein E1; Forkhead drosophila homolog like 15; Forkhead like 15; Forkhead related protein FKHL 15; Forkhead related protein FKHL15; FOX E1; FOX E2; FOXE 1; FOXE 2; FOXE-2; FOXE1; FOXE2; HFKH 4; HFKH4; HFKL 5; HFKL5; homolog-like 15; thyroid transcription factor 2; thyroid transcription factor-2; TITF 2; TITF2; TTF 2; TTF-2; TTF2; FOXE1_HUMAN.
<b>Research Area</b>	transcriptional regulatory factor
<b>Immunogen Species</b>	Rabbit
<b>Clonality</b>	Polyclonal
<b>React Species</b>	Mouse(predicted:Human,Rat,Chicken,Dog,Pig,Cow) WB=1:500-2000
<b>Applications</b>	not yet tested in other applications. optimal dilutions/concentrations should be determined by the end user.
<b>Theoretical molecular weight</b>	41kDa
<b>Cellular localization</b>	The nucleus
<b>Form</b>	Liquid
<b>Concentration immunogen</b>	1mg/ml KLH conjugated synthetic peptide derived from human FOXE1: 101-200/373
<b>Lsotype</b>	IgG
<b>Purification</b>	affinity purified by Protein A
<b>Buffer Solution</b>	1M TBS(pH7.4) with 1% BSA, 3% Proclin300 and 50% Glycerol.
<b>Storage</b>	Shipped at 4°C. Store at -20 °C for one year. Avoid repeated freeze/thaw cycles.
<b>Attention</b>	This product as supplied is intended for research use only, not for use in human, therapeutic or diagnostic applications.

## PubMed

### [PubMed](#)

Thyroid transcription factor 2 (TTF2; Forkhead; TH; also known as a "winged helix") . FH is named for the Drosophila fork head protein, a transcription factor which promotes terminal rather than segmental development. This family of transcription factor domains, which bind to B-DNA as monomers, are also found in the Hepatocyte nuclear factor (HNF) proteins, which provide tissue-specific gene regulation. The structure contains 2 flexible loops or "wings" in the C-terminal region, hence the term winged helix. Transcription factor that binds and activates the promoter of thyroid specific genes such as thyroglobulin, thyroperoxidase, and thyrotropin receptor. Crucial in the maintenance of the thyroid differentiation phenotype. May play a role in lung development and surfactant homeostasis. TISSUE SPECIFICITY: Thyroid and lung. subcellular location: Nucleus Belongs to the NK-2 homeobox family.

#### **Function:**

Probable transcription factor. Could be involved in thyroid gland organogenesis.

#### **Subcellular Location:**

Nucleus (Potential).

## Product Detail

#### **Tissue Specificity:**

Detected in adult brain, placenta, lung, liver, skeletal muscle, kidney, pancreas, heart, colon, small intestine testis and thymus. Expression was strongest in heart and pancreas.

#### **Post-translational modifications:**

Phosphorylated.

#### **DISEASE:**

Defects in FOXE1 are the cause of Bamforth-Lazarus syndrome (BLS) [MIM:241850]. BLS is associated with thyroid agenesis, cleft palate and choanal atresia.

#### **Similarity:**

Contains 1 fork-head DNA-binding domain.

#### **SWISS:**

O00358

#### **Gene ID:**

2304

**Database links:**

[Entrez Gene: 2304](#) Human

[GenBank: NP\\_004464](#) Human

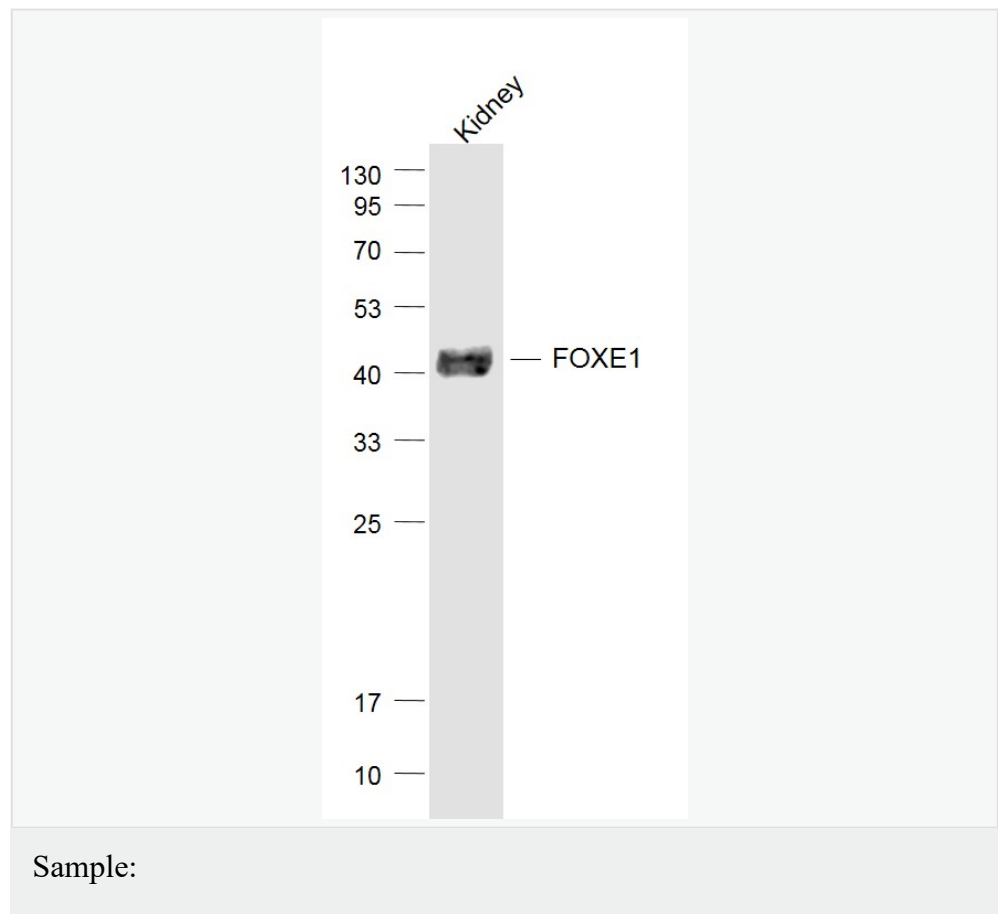
[Omim: 602617](#) Human

[SwissProt: O00358](#) Human

[Unigene: 159234](#) Human

甲状腺转录因子-2(TTF-2)在个体发生中的表达具有高度组织特异性和发育阶段特异性,是甲状腺、腭等器官正常发育的重要调节因子。只要用于研究 TTF-2 基因活动规律和表达模式发生的变化,对胚胎发育过程中器官发生和产生的影响状况。

**Product Picture**





Kidney (Mouse) Lysate at 40 ug

Primary: Anti-FOXO1 (SL0446R) at 1/1000 dilution

Secondary: IRDye800CW Goat Anti-Rabbit IgG at 1/20000 dilution

Predicted band size: 41 kD

Observed band size: 41 kD