

## Rabbit Anti-Streptavidin antibody

SL0437R

<b>Product Name</b>	Streptavidin
<b>Chinese Name</b>	链酶亲和素抗体
<b>Alias</b>	SA protein; SA V1; SA V2; Streptavidin V1; Streptavidin V2; SAV1_STRVL.
<b>Research Area</b>	Cell biology immunology
<b>Immunogen Species</b>	Rabbit
<b>Clonality</b>	Polyclonal
<b>React Species</b>	Streptomyces
<b>Applications</b>	WB=1:500-2000 (Paraffin sections need antigen repair) not yet tested in other applications. optimal dilutions/concentrations should be determined by the end user.
<b>Theoretical molecular weight</b>	53kDa
<b>Cellular localization</b>	Extracellular matrix Secretory protein
<b>Form</b>	Liquid
<b>Concentration</b>	1mg/ml
<b>immunogen</b>	Streptavidin protein
<b>Lsotype</b>	IgG
<b>Purification</b>	affinity purified by Protein A
<b>Buffer Solution</b>	Streptomyces1M TBS(pH7.4) with 1% BSA, Streptomyces3% Proclin300 and 50% Glycerol.
<b>Storage</b>	Shipped at 4°C. Store at -20 °C for one year. Avoid repeated freeze/thaw cycles.
<b>Attention</b>	This product as supplied is intended for research use only, not for use in human, therapeutic or diagnostic applications.
<b>PubMed</b>	<a href="#">PubMed</a>
<b>Product Detail</b>	Streptavidin is biotin-binding protein that was originally isolated from Streptomyces avidinii. In contrast to avidin, streptavidin has no carbohydrate and has a mildly acidic pI of 5. Thermo Scientific Pierce Streptavidin products

use a recombinant form of streptavidin having a mass of 53,000 daltons and a near-neutral pI. Streptavidin is a tetrameric protein, with each subunit binding one molecule of biotin with affinity similar to that of avidin. Guanidinium chloride will dissociate avidin and streptavidin into subunits, but streptavidin is more resistant to dissociation.

**Function:**

The biological function of streptavidin is not known. Forms a strong non-covalent specific complex with biotin (one molecule of biotin per subunit of streptavidin).

**Subunit:**

Homotetramer (By similarity).

**Subcellular Location:**

Secreted.

**Similarity:**

Belongs to the avidin/streptavidin family.  
Contains 1 avidin-like domain.

**SWISS:**

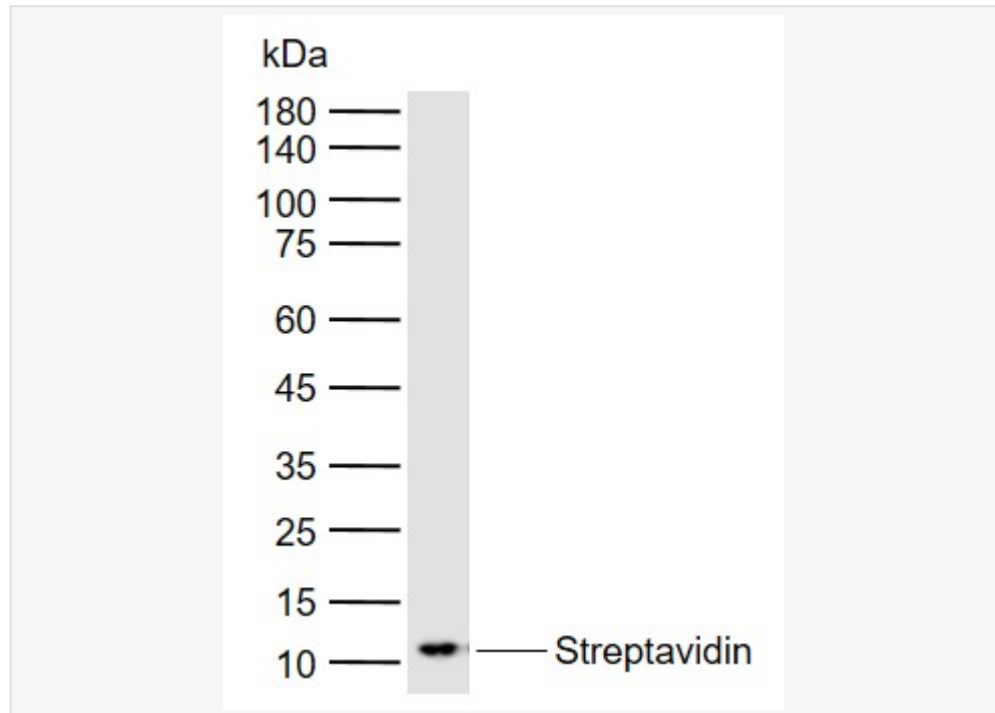
P22629

**Gene ID:**

N/A

**Database links:**

**Product Picture**



Sample:

Lane 1: Streptavidin (SL0437P)

Primary: Anti- Streptavidin (SL0437R) at 1/1000 dilution

Secondary: IRDye800CW Goat Anti-Rabbit IgG at 1/20000 dilution

Predicted band size: 53 kDa

Observed band size: 12 kDa