

## Rabbit Anti-TIMP-3 antibody

SL0417R

**Product Name** TIMP-3

**Chinese Name** 金属蛋白酶组织抑制因子-3 抗体

**Alias** HSMRK222; K222; K222TA2; Metalloproteinase inhibitor 3; TIMP3; TIMP 3; MIG 5 protein; MIG5 protein; Protein MIG 5; SFD; Sorsby fundus dystrophy pseudoinflammatory; TIMP metalloproteinase inhibitor 3; TIMP3; Tissue Inhibitor of Metalloproteinase 3; Tissue inhibitor of metalloproteinases3; TIMP3\_HUMAN.

**Research Area** Tumour Cardiovascular Cell biology Neurobiology Signal transduction Apoptosis Synthesis and Degradation

**Immunogen Species** Rabbit

**Clonality** Polyclonal

**React Species** Human, (predicted: Mouse, Rat, Pig, Cow, Horse, Rabbit, )

**Applications** IHC-P=1:100-500,IHC-F=1:100-500,IF=1:100-500 (Paraffin sections need antigen repair)  
not yet tested in other applications.  
optimal dilutions/concentrations should be determined by the end user.

**Theoretical molecular weight** 21kDa

**Cellular localization** Extracellular matrix Secretory protein

**Form** Liquid

**Concentration** 1mg/ml

**immunogen** KLH conjugated synthetic peptide derived from human TIMP-3: 151-211/211

**Lsotype** IgG

**Purification** affinity purified by Protein A

**Buffer Solution** 1M TBS(pH7.4) with 1% BSA, 3% Proclin300 and 50% Glycerol.

**Storage** Shipped at 4°C. Store at -20 °C for one year. Avoid repeated freeze/thaw cycles.

**Attention** This product as supplied is intended for research use only, not for use in human, therapeutic or diagnostic applications.

**PubMed**

[PubMed](#)

This gene belongs to the TIMP gene family. The proteins encoded by this gene family are inhibitors of the matrix metalloproteinases, a group of peptidases involved in degradation of the extracellular matrix (ECM). Expression of this gene is induced in response to mitogenic stimulation and this netrin domain-containing protein is localized to the ECM. Mutations in this gene have been associated with the autosomal dominant disorder Sorsby's fundus dystrophy. [provided by RefSeq, Jul 2008].

**Subunit:**

Interacts with EFEMP1.

**Subcellular Location:**

Secreted, extracellular space, extracellular matrix.

**Similarity:**

Belongs to the protease inhibitor I35 (TIMP) family.  
Contains 1 NTR domain.

**SWISS:**

P35625

**Product  
Detail**

**Gene ID:**

7078

**Database links:**

[Entrez Gene: 7078](#) Human

[Entrez Gene: 21859](#) Mouse

[Entrez Gene: 25358](#) Rat

[Omim: 188826](#) Human

[SwissProt: P35625](#) Human

[SwissProt: P39876](#) Mouse

[SwissProt: P48032](#) Rat

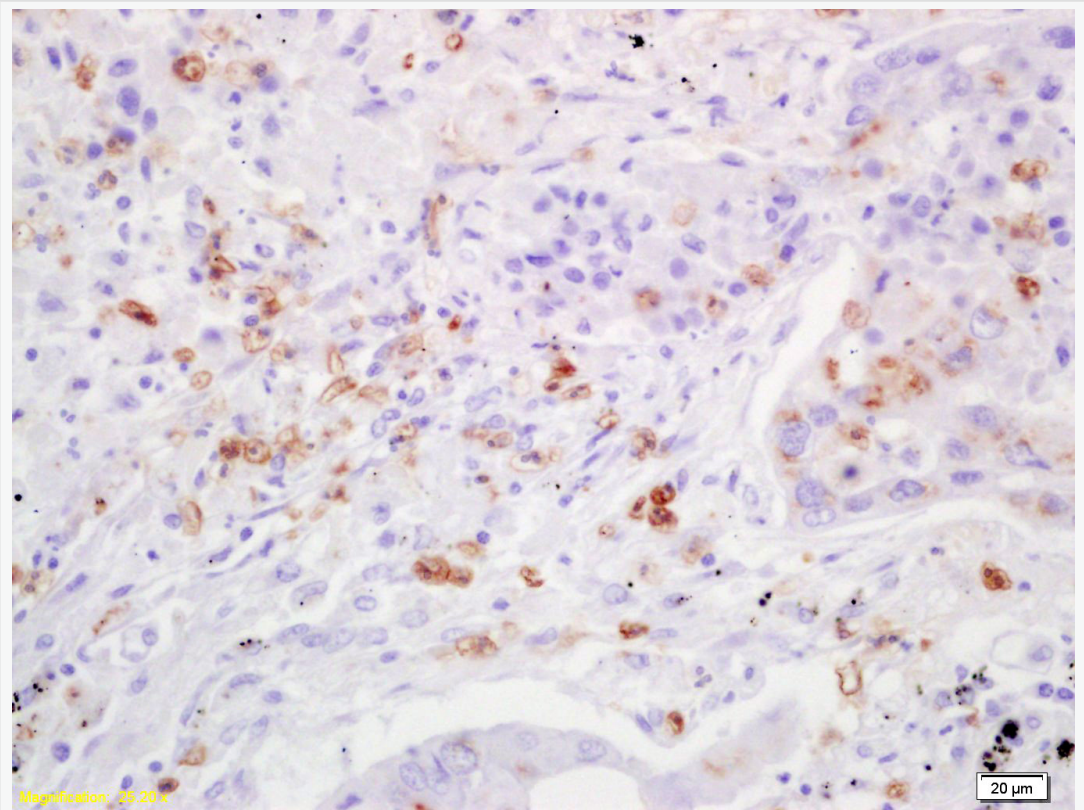
[Unigene: 644633](#) Human

**Synthesis and Degradation (Synthesis and Degradation)**

近年来，国内外科科研人员对 TIMP-3 的抗 Tumour 作用日益被重视，学者认为：TIMP-3 具有强烈促凋亡、抑制血管生成、抗 Tumour 浸润作用，TIMP-3 与

TIMP-1、2 且相互间有明显协同抗 Tumour 作用

**Product  
Picture**



Tissue/cell: human lung carcinoma; 4% Paraformaldehyde-fixed and paraffin-embedded;

Antigen retrieval: citrate buffer ( 1M, pH 6.0 ), Boiling bathing for 15min; Block endogenous peroxidase by 3% Hydrogen peroxide for 30min; Blocking buffer (normal goat serum,C-0005) at 37°C for 20 min;

Incubation: Anti-TIMP-3 Polyclonal Antibody, Unconjugated(SL0417R) 1:100, overnight at 4°C, followed by conjugation to the secondary antibody(SP-0023) and DAB(C-0010) staining