

## Rabbit Anti-Protein A antibody

SL0362R

<b>Product Name</b>	Protein A
<b>Chinese Name</b>	重组金黄色葡萄球菌蛋白 A 抗体
<b>Alias</b>	Immunoglobulin G binding protein A; Staphylococcal protein A; SPA; gG-binding protein A; SPA_STAA8.
<b>Research Area</b>	immunology
<b>Immunogen Species</b>	Rabbit
<b>Clonality</b>	Polyclonal
<b>React Species</b>	S.aureus
<b>Applications</b>	WB=1:500-2000 (Paraffin sections need antigen repair) not yet tested in other applications. optimal dilutions/concentrations should be determined by the end user.
<b>Theoretical molecular weight</b>	40-60kDa
<b>Cellular localization</b>	Secretory protein
<b>Form</b>	Liquid
<b>Concentration</b>	1mg/ml
<b>immunogen</b>	Recombinant protein A: full length
<b>Lsotype</b>	IgG
<b>Purification</b>	affinity purified by Protein A
<b>Buffer Solution</b>	S.aureus1M TBS(pH7.4) with 1% BSA, S.aureus3% Proclin300 and 50% Glycerol.
<b>Storage</b>	Shipped at 4°C. Store at -20 °C for one year. Avoid repeated freeze/thaw cycles.
<b>Attention</b>	This product as supplied is intended for research use only, not for use in human, therapeutic or diagnostic applications.
<b>PubMed</b>	<a href="#">PubMed</a>
<b>Product Detail</b>	Protein A is a 40-60 kDa surface protein originally found in the cell wall of the bacteria Staphylococcus aureus (SPA). SPA binds proteins from many of mammalian species, most notably IgGs, and helps inhibit phagocytic

engulfment and acts as an immunological disguise via this type of interaction, thus the bacteria will disrupts opsonization and phagocytosis. SPA is known to bind with Fc region of immunoglobulins preferentially through interaction with the VH3 variable region of the heavy chain. SPA has been shown to bind with high affinity to human IgG1 and IgG2 as well as mouse IgG2a and IgG2b, whereas bind with moderate affinity to human IgM, IgA and IgE as well as mouse IgG3 and IgG1. SPA is often produced in *E. coli* and is practically coupled to other molecules such as enzymes, biotin, radioactive iodine for use in immunology and other biological research. SPA is also immobilized onto solid supports such as agarose beads for total IgG purifying or interest protein or protein complex identifying in immunoprecipitation studies.

**Subcellular Location:**

Secreted; cell wall.

**SWISS:**

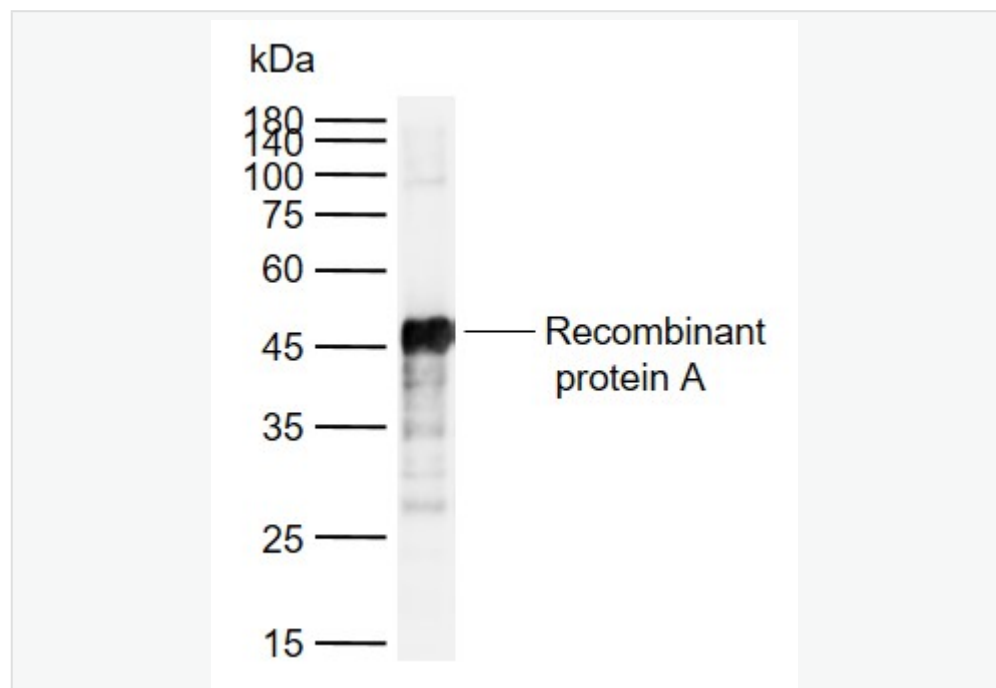
P02976

**Gene ID:**

3919448

**Database links:**

**Product Picture**





Sample:

Lane 1: Recombinant protein A

Primary: Anti- Protein A (SL0362R) at 1/1000 dilution

Secondary: IRDye800CW Goat Anti-Rabbit IgG at 1/20000 dilution

Predicted band size: 40-60 kDa

Observed band size: 41 kDa