

Rabbit Anti-MTLC antibody

SL0334R

Product Name MTLC

Chinese Name 致癌基因抗体

Alias myc target 1; Myc target 1; MYCT 1 protein; Myc target in myeloid cells protein 1; Myc target protein 1; 1110020B04Rik; AI225941; AI642973; FLJ21269; MGC156309; MGC156310; Mt-Mc1; MTLC; Mtmc1; MYCT1; MYCT1_HUMAN; Myct1; MTMC1.

Research Area immunology Chromatin and nuclear signals transcriptional regulatory factor Epigenetics

Immunogen Species Rabbit

Clonality Polyclonal

React Species Human, Mouse, (predicted: Rat, Dog,)
WB=1:500-2000,IHC-P=1:100-500,IHC-F=1:100-500,IF=1:100-500 (Paraffin sections need antigen repair)
Applications not yet tested in other applications.
optimal dilutions/concentrations should be determined by the end user.

Theoretical molecular weight 27kDa

Cellular localization The nucleus

Form Liquid

Concentration 1mg/ml

immunogen KLH conjugated synthetic peptide derived from human MTLC: 21-100/235

Lsotype IgG

Purification affinity purified by Protein A

Buffer Solution 1M TBS(pH7.4) with 1% BSA, 3% Proclin300 and 50% Glycerol.

Storage Shipped at 4°C. Store at -20 °C for one year. Avoid repeated freeze/thaw cycles.

Attention This product as supplied is intended for research use only, not for use in human, therapeutic or diagnostic applications.

PubMed

[PubMed](#)

MTLC is a 235 amino acid nuclear protein that is thought to regulate certain myc target genes. Downregulated in gastric cancer tissues, MTLC is expressed in the hepatocellular carcinoma cell line, Bel7402. Overexpression of MTLC is thought to influence tumorigenic conversion, promotion of apoptosis genomic instability and inhibition of hematopoietic differentiation. The gene encoding MTLC maps to human chromosome 6, which contains 170 million base pairs and comprises nearly 6% of the human genome. Deletion of a portion of the q arm of chromosome 6 is associated with early onset intestinal cancer, suggesting the presence of a cancer susceptibility locus. Additionally, Porphyria cutanea tarda, Parkinson's disease, Stickler syndrome and a susceptibility to bipolar disorder are all associated with genes that map to chromosome 6.

Function:

May regulate certain MYC target genes, MYC seems to be a direct upstream transcriptional activator. Does not seem to significantly affect growth cell capacity. Overexpression seems to mediate many of the known phenotypic features associated with MYC, including promotion of apoptosis, alteration of morphology, enhancement of anchorage-independent growth, tumorigenic conversion, promotion of genomic instability, and inhibition of hematopoietic differentiation.

**Product
Detail**

Subcellular Location:

Nucleus. Note=Expressed in nuclei of hepatocellular carcinoma cell line Bel7402 cells.

Tissue Specificity:

Down-regulated in gastric cancer tissues.

Similarity:

Belongs to the MYCT1 family.

SWISS:

Q8N699

Gene ID:

80177

Database links:

[Entrez Gene: 80177](#) Human

[Entrez Gene: 68632](#) Mouse

[Entrez Gene: 292264](#) Rat

[SwissProt: Q8N699](#) Human

[SwissProt: Q8R411](#) Mouse

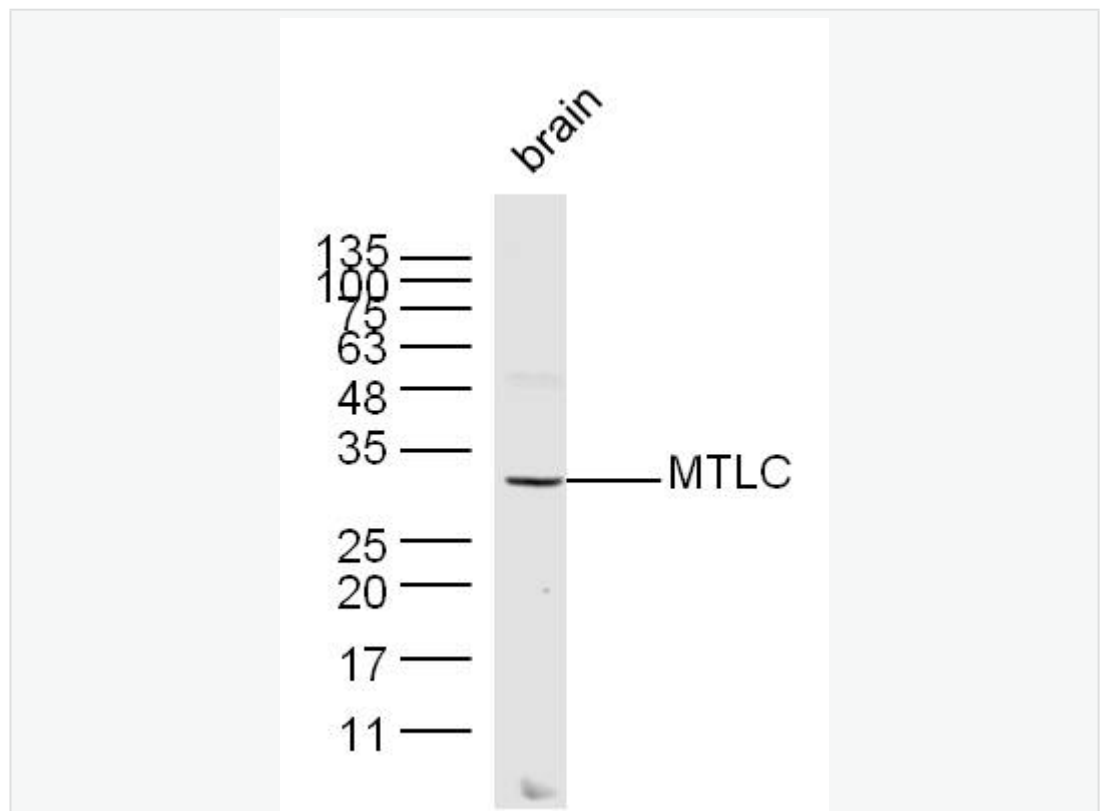
[Unigene: 18160](#) Human

[Unigene: 338242](#) Mouse

[Unigene: 55418](#) Rat

transcriptional regulatory factor (Transcriptin Regulators)

**Product
Picture**



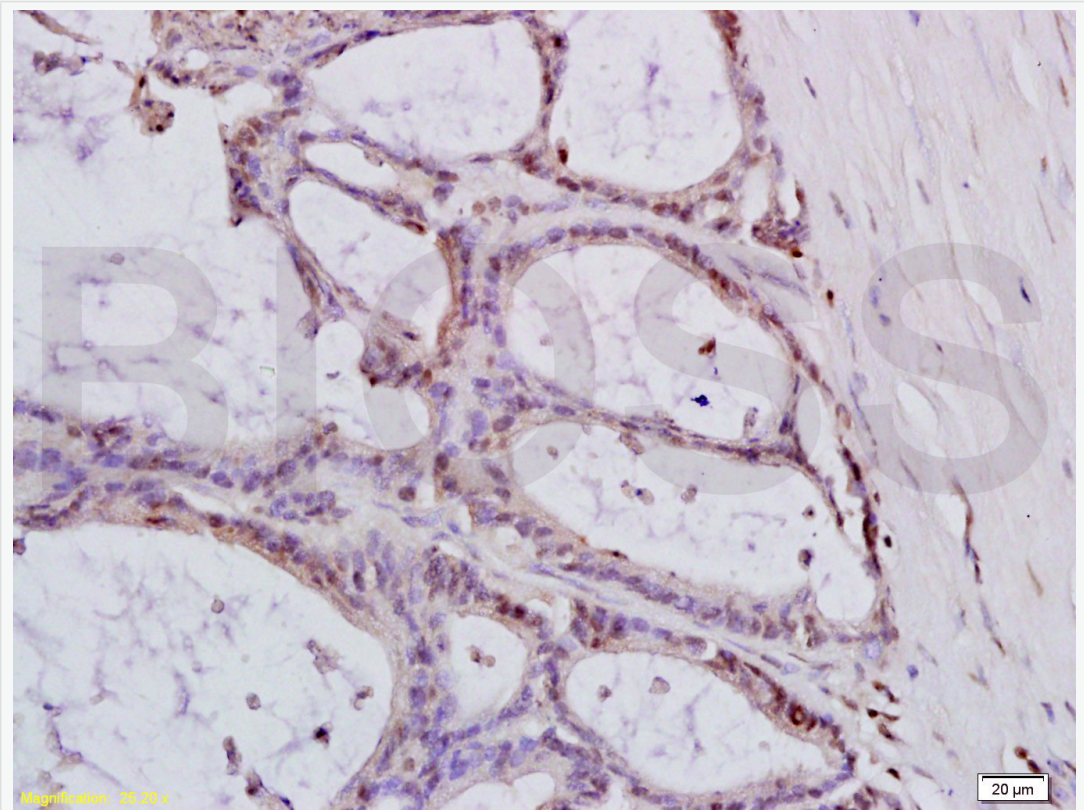
Sample: Brain (Mouse) Lysate at 40 ug

Primary: Anti- MTLC (SL0334R) at 1/300 dilution

Secondary: IRDye800CW Goat Anti-Rabbit IgG at 1/10000 dilution

Predicted band size: 27 kD

Observed band size: 31 kD



Tissue/cell: human colon carcinoma; 4% Paraformaldehyde-fixed and paraffin-embedded;

Antigen retrieval: citrate buffer (1M, pH 6.0), Boiling bathing for 15min; Block endogenous peroxidase by 3% Hydrogen peroxide for 30min; Blocking buffer (normal goat serum,C-0005) at 37°C for 20 min;

Incubation: Anti-MTLC Polyclonal Antibody, Unconjugated(SL0334R) 1:200, overnight at 4°C, followed by conjugation to the secondary antibody(SP-0023) and DAB(C-0010) staining



SunLong Biotech Co.,LTD
Tel: 0086-571-56623320 Fax:0086-571-56623318
E-mail:sales@sunlongbiotech.com
www.sunlongbiotech.com
